

# ***THE KIWI***

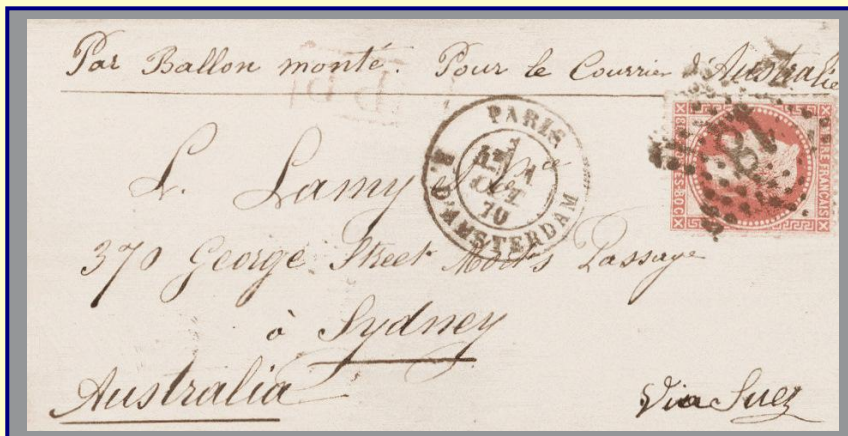
**JOURNAL OF THE NEW ZEALAND SOCIETY OF GREAT BRITAIN**



*Harry Linley Richardson - Artist and Stamp Designer (1878-1947).  
(see page 194)*



## Superb material for the discerning



The above cover was an example of the world's first airmail and is the only known Paris ballon post cover addressed to Australasia. In 2009 Mowbrays Australia sold this 1870 Siege of Paris ballon monté cover for NZ \$238,625 – then a record Australasian price for a philatelic item.



The above 13 August 1855 cover from Auckland to Birmingham, England, bears a pair of New Zealand's very first 1d full-face queen stamps. Only three covers bearing 1d SG1 FFQs are known – this being the earliest recorded date. It was acquired in 2009 by John Mowbray for a client for NZ \$138,000.

Mowbray Collectables buys and sells collections, stamps and postal history.  
What can you offer? Contact our friendly staff in the first instance.

Mowbray collectables offers New Zealand and world collections, stamps and postal history in monthly postal auction catalogues – free samples available!

## Mowbray Collectables

Private Bag 63000, Wellington, New Zealand 6140

☎ + 64 6 364 8270

fax + 64 6 364 8252

[mowbray.stamps@xtra.co.nz](mailto:mowbray.stamps@xtra.co.nz)  
[www.mowbraycollectables.co.nz](http://www.mowbraycollectables.co.nz)

## THE NEW ZEALAND SOCIETY OF GREAT BRITAIN

### Honorary President

Keith C. Collins

### Honorary Chairman

John Stimson

Mead Cottage

Boulsters Lane, Maidenhead, SL6 8TJ

☎07710-336064

e-mail: john.m.stimson@gmail.com

### Hon. General Secretary & Librarian

Michael Wilkinson

121 London Road,

Sevenoaks, Kent, TN13 1BH

☎017-32456997

e-mail: mwilkin799@aol.com

### Honorary Membership Secretary

John Stimson

Mead Cottage

Boulsters Lane, Maidenhead, SL6 8TJ

☎07710-336064

e-mail: nzsgbmembership@gmail.com

### Honorary Treasurer

Paul Woods

57 Grosvenor Drive, Whitley Bay,

Tyne & Wear, NE26 2JR

☎07446-936840

e-mail: pvdw1958@yahoo.co.uk

### Hon. Packet Secretary

Professor John Hepworth

2, Carnoustie Close,

Fulwood, Preston, Lancashire, PR2 7ER

☎01772-861709

e-mail: j.d.hepworth@tinyworld.co.uk

### Hon. Editor of *The Kiwi*

Paul Wreglesworth

37 Blakelow Road,

Macclesfield, Cheshire, SK11 7ED

☎01625-420694

e-mail: kiwieditor@gmail.com

### Webmaster

Bob Clark

nzsgb1@googlemail.com

Website: www.nzsgb.org.uk

### Representative in New Zealand

John Watts

jlwatts463@gmail.com

## CONTENTS

Editorial	184
- <i>The Kiwi</i> - Advertisers in this Issue	
- <i>The Kiwi</i> - Current Advertising Rates	
- 'NZSGB' - Current Subscription Rates	
- Membership Renewal	
Society News	185
- Auction Appeal	
- Competitive Awards to Members	
Forthcoming Meetings	
- AGM & Annual Auction (30 November 2019)	186
- Midland, North of England, Scottish Regional Groups	187
- London 2020 (Society Meeting, 7 May 2020)	187
Publications - Terry Hancox	187
Notes of Meetings Held	
- Oxford (October 2019)	188
- Scottish Regional Group (July 2019)	188
- North of England Regional Group (September 2019)	189
New Publications	190
- <i>Australasian Crash Mail and Mail from Other Incidents Volume Two: 1931 - 1935 (Brian Peace)</i>	
- <i>Third Voyage of James Cook (expression of interest) (Daryl Kibble)</i>	
New Zealand's First Air Mail - 16 December 1919 (Lewis Giles)	191
Harry Linley Richardson - Artist and Stamp Designer (1878-1947) (Andrew Dove)	194
Detained for Postage - But Much More (Gerald J Elliott MNZM RDP FRPSL FRPSNZ)	200
New Zealand 1960 Pictorial Issue - Vending Machine Stamps (Murray Willocks and Paul Wreglesworth)	204
Yvette Williams (1929-2019) - Olympic Gold Medal Winner 1952 (Adrian Philbey)	210
New Zealand Expeditionary Force Masonic Association (John Watts)	212
Index to Volume 68 of <i>The Kiwi</i>	213

*The Society is affiliated to: The Association of British Philatelic Societies  
the New Zealand Philatelic Federation  
and the Association of Scottish Philatelic Societies.*



## MOWBRAY COLLECTABLES

is proud to support the New Zealand Society of Great Britain  
as its major sponsor

# EDITORIAL

Another philatelic year draws to a close and I am pleased to report that, once again, it has been possible to publish six issues of *The Kiwi*, each with 36 pages in full colour, delivered, hopefully on time, every two months. The distribution system does run smoothly most of the time thanks to our printers who do an excellent job hitting targets for printing and mailing. Once all those envelopes enter the various national postal systems it does seem to be a bit of a lottery in some parts of the world! Sometimes copies get lost. If your copy hasn't appeared within a couple of weeks of the month of the issue please get in touch.

As my mind turns (already) to the first issue for 2020 many thanks to all who have contributed something to *The Kiwi* whether it is a long article, a one-pager or just a few lines, or just a seed of an idea. I can't do it without you.

Similarly a big shout out to those dealers and auction houses who place adverts in *The Kiwi*, whether this is on a regular or occasional basis - their support is hugely important. Their contribution is not just financial, although this does help defray the cost of publication, but they form part of the philatelic community that binds together everyone with an interest in New Zealand philately. Please support them and mention the NZSGB when you do.



## THE KIWI - ADVERTISERS IN THIS ISSUE

ADVERTISER	PAGE
Mowbray Collectables	Inside Front Cover
Ashford Stamps Ltd.	199
Steven Zirinsky	199

ADVERTISER	PAGE
Classic Stamps Ltd.	Inside Back Cover
Auckland City Stamps	Back Cover

*"Please mention the NZSGB when you speak with our advertisers"*

## THE KIWI - CURRENT ADVERTISING RATES

	Full (single insertion)	Full (3 or more consecutive)	Half (single insertion)	Half (3 or more consecutive)	Quarter (single insertion)	Quarter (3 or more consecutive)
Full Colour	£90	£75	£75	£60	£50	£40

## NZSGB - CURRENT SUBSCRIPTION RATES

Membership rates are £20 (within the UK) and £25 (overseas) - with printed copy of *The Kiwi*.

Members who prefer to receive an electronic version of the journal (*e-Kiwi*), downloadable from the Society's web-site, as an alternative to the paper copy pay £20 regardless of country of residence.

Payment can be made by various means including PayPal ('gift' option). Details from the membership secretary [nzsghmembership@gmail.com](mailto:nzsghmembership@gmail.com) or via the web-site.

### Membership Renewal Time

Membership reminders will be sent out shortly and prompt payment would be appreciated.

If any of your details (address, e-mail etc) have changed please let the Membership Secretary know.

If you wish to change from paper to e-version of *The Kiwi*, or vice versa, do let us know.

# SOCIETY NEWS

## ***ANNUAL SOCIETY AUCTION***

The Annual Auction will be held at 14:00 on **Saturday 30 November 2019**

All members for whom we have an e-mail address should have received an electronic copy of the catalogue and a paper copy has been distributed to those requested one. Anyone who has not received an email copy or would like a paper copy please contact John Stimson (contact details on page **183**).

If you are attending the auction remember to bring your catalogue. Copies on the day will be £2.

The catalogue and a number of lots are available to view on the Society's web-site.

## ***POSTAL BIDS - A REMINDER***

If you are unable to attend in person Postal Bids are most welcome. These should be sent by post, e-mail or telephone to the Hon. Auctioneer, Brian Stonestreet, to arrive no later than November 28th.

Send bids to:

32 Bedgebury Close  
Vinters Park  
Maidstone  
Kent ME14 5QZ

☎ 01622 675784

e-mail: [b.stonestreet@btinternet.com](mailto:b.stonestreet@btinternet.com)



## **COMPETITIVE AWARDS TO MEMBERS**

We are pleased to announce the following awards:

**16<sup>th</sup> New Zealand Philatelic Literature Exhibition** - Philatelic Centre, 67 Mandeville Street, Riccarton, Christchurch, 28-29 September 2019.

Subject	Author/Editor	Mark	Award
New Zealand 1929 Health "Help Stamp Out Tuberculosis" Plating	Terry Hancox	88	Gold
New Zealand Stamp Collector	Richard Bloxham	87	Gold
Wartime Internment in New Zealand	Andrew Dove	83	Large Vermeil
The Kiwi (2018)	Paul Wreglesworth	81	Large Vermeil
Cachets Applied to Interrupted New Zealand Airmail	Brian Peace	80	Large Vermeil

Congratulations to members who were successful at:

**ABPS AUTUMN STAMPEX** - Business Design Centre, Islington, London. 11-14 September 2019

Member	Subject of Entry	Class	Frames	Mark	Award
Alexander McCulloch	New Zealand 1935 Pictorial Issue	Traditional	5	83	Large Vermeil
Stephen Schumann	New Zealand Stamped-to-Order Envelopes	Postal Stationery	1	91	Large Gold

# NEXT MEETING OF THE SOCIETY

The next meeting of the Society will be held at the Union Jack Club on Saturday **30 November 2019**.

## ***AGM & ANNUAL AUCTION***

The meeting will start at 11:00 with the Annual General Meeting of the Society. The Annual Auction will be held in the afternoon. Lots may be viewed from 12:30 and the auction will start promptly at 14:00.

### **68<sup>th</sup> ANNUAL GENERAL MEETING OF THE NEW ZEALAND SOCIETY OF GREAT BRITAIN**

Notice is hereby given that the 68<sup>th</sup> Annual General Meeting of the New Zealand Society of Great Britain will be held at the Union Jack Club, Sandell Street, London on Saturday 30 November 2019 commencing at 11:00am.

#### **AGENDA**

1. Minutes of the 67<sup>th</sup> Annual General Meeting - published in the January 2019 issue of *The Kiwi*
2. Chairman's report and review of 2019
3. Financial report from the Hon. Treasurer
4. Report from the Hon. Packet Secretary
5. Report from the Hon. Library Liaison Officer
6. Report from the Hon. Editor of *The Kiwi*
7. To elect Officers to the Committee:
  - a) Honorary President
  - b) Vice President(s)
  - c) Honorary Chairman
  - d) Honorary General Secretary
  - e) Honorary Membership Secretary
  - f) Honorary Treasurer
  - g) Honorary Editor of *The Kiwi*
  - h) Honorary Packet Secretary
  - i) Honorary Auctioneer
  - j) Honorary Library Liaison Officer
  - k) Other Officers of the Society
8. Consideration and, if thought fit, approval of updated Society Rules.  
(The Rules were last formally revised in 1991. A copy of the proposed new update will be e-mailed to members for whom we have an e-mail address. Printed copies are available from the Hon. General Secretary on request.)
9. Any other business proper to the Annual General Meeting of which due notice has been given to the Honorary General Secretary.

Nominations are invited from members for all of the Officers of the Society, having obtained the agreement (in writing) of the member so nominated.

Michael Wilkinson, Honorary General Secretary



# FORTHCOMING REGIONAL GROUP MEETINGS

## NORTH OF ENGLAND REGIONAL GROUP

The next meeting of the North of England Group will be held on Saturday **9 November 2019** at St. Luke's Church, Lodge Road, Orrell starting at 12:30. Members to display new acquisitions or items of interest.

Group Contact: - Jack Lindley ☎ 0161 705 1074 e-mail: lindleyjack@aol.com

## SCOTTISH REGIONAL GROUP

The next meeting of the Scottish Group will be an informal gathering, at 13:00 on Saturday **18 April 2020**, at the 91<sup>st</sup> ASPS Congress in Perth. Meet in the café on the balcony of the Dewar Centre.

Group contact: - Adrian Philbey ☎ 0141 562 5817 e-mail: adrian.philbey@ed.ac.uk

## MIDLAND REGIONAL GROUP

For details of forthcoming meetings of the Midland Group contact:

Ian Samuel ☎ 0121 449 0849

## A DATE FOR ALL YOUR DIARIES

*There will be a meeting of the Society, during the exhibition, on Thursday 7 May (14:00-16:00)*

2 2 LONDON INTERNATIONAL STAMP EXHIBITION 2 TO 9 MAY 2020



## PUBLICATIONS

Terry Hancox was rewarded for his hard work with a Gold Medal (with judges felicitations) for one of his self-published books, *New Zealand 1929 Health 'Help Stamp Out Tuberculosis' Plating*, at the 16<sup>th</sup> New Zealand Philatelic Literature Exhibition, held in Christchurch at the end of September (see page 185).

All of Terry's current titles are shown below and can be downloaded, free, from the Society's website. Print versions can be produced on demand. Contact Terry (TAHNZstamps@gmail.com) for details and prices.

Title	Date	Pages
1925 Dunedin Exhibition, Plating	2017	282
1929 Health 'Help Stamp Out Tuberculosis', Plating	2018	196
1933 Health Stamp "Pathway", Plating	2017	81
1945 Health 'Peter Pan', Plating	2019*	88
1957 Health Beach Scenes, Plating	2016	36
1958 Health Brigade Children, Plating	2018*	74
1959 Health Tete and Poaka, Plating	2018*	60
1959 Centenary of the Red Cross, Plating	2017	152
1964 Health Tarapunga and Korora, Plating	2018	104
1965 Health Kaka and Piwakawaka, Plating	2017	82
1967 Health Rugby Football, Plating	2019	173
1969 Cook Bicentenary	2019	102
1970 2½c Magpie Moth and 1971 4c on 2½c Provisionals	2017	126

\* revised edition

### NEW ZEALAND POSTAGE STAMPS ERRORS AND VARIETIES

### NEW ZEALAND 1929 HEALTH 'HELP STAMP OUT TUBERCULOSIS' PLATING

Illustrating a plating exercise for the 1929 Health Stamps.

By Terry Hancox



## MEETINGS HELD

### NOTES OF THE MEETING HELD IN OXFORD, 5 OCTOBER 2019

Our 'out of town' meeting for 2019 was held at Lincoln College Oxford where our General Secretary, Michael Wilkinson, studied chemistry over fifty years ago. Those attending (below) were given a short tour of the College, including the Hall and Chapel, by Michael before the meeting began.

The philatelic material shown ranged widely, including Chalons, sideface and George V proofs, airmails, illustrated envelopes, archive documents about health stamps, counter coils, teddy bears, items to commemorate the 250<sup>th</sup> anniversary of Captain Cook's landing at Gisborne on 8 October 1769, postage dues and booklets. A detailed report of the meeting will appear in the next issue of *The Kiwi*.



### NOTES OF THE SCOTTISH GROUP MEETING, EDINBURGH, 20 JULY 2019

The summer meeting of the Scottish group was held in Edinburgh on Saturday 20 July 2019 and attended by six members. The meeting was kindly hosted by David Edwards, with a lovely lunch provided by David's wife, Roslyn, and their daughter, Kirsty.

**David Edwards** presented a display of the 1988 40c brown kiwi stamp, including different types of gums and packaging. This included booklets with two, three or four kiwi logos, a Mount Cook booklet, a Stamp World London '90 booklet, stamp packs produced for the Foodtown supermarket chain and Hang Sell booklets.

**David Stalker** showed newly acquired covers illustrated by Julia Farrer for the September 2018 meeting in Bath, covers for the 2018 Armistice Day stamp issue and a 2019 space pioneers holographic miniature sheet. In his main exhibit, David displayed 1977 overprinted Postafix and lightning roll/machine coil versions of the 1970 and 1975 Definitives, including dummy stamps, a range of surcharge flaws and variations, as well as plate flaws and plate retouches.

**John Studholme** displayed a newly completed set of Boer War postcards addressed to Kakahu, a location with strong family connections. He also showed several customised advertising labels (CALs), one of which depicted Dr Margaret Cruickshank, the second female medical graduate from a New Zealand university and the first registered female doctor in New Zealand; the image used for this CAL was a painting by Billy Scott on the side of a silo in Waimate. John's main display was of New Zealand stamp issues from 50 years ago, including the 1969 Christmas and Health stamps, and 25<sup>th</sup>, 100<sup>th</sup>, 150<sup>th</sup> and 200<sup>th</sup> anniversary issues.

**Alexander McCulloch** showed a newly acquired 8d coil pair, no. 19, of the 1942 8d tuatara stamp in deep red brown. He also displayed several 1d and 2d rose First Side Face issues. Alexander then exhibited examples of the 1935, 1936 and 1941 Pictorials, with a focus on the 2d Whare and 2/- Captain Cook issues, including sheet corners, coil pairs, paper types, shade variations, retouches, double perforations, blocks with imperforate selvage, offsets, reverse prints, corner folds and doctor blade flaws. An important example was a 2d Whare offset reverse stamp, discovered in 2017. A block of six 1935 2/- Captain Cook stamps confirmed that the



coconut flaw appeared after the start of printing, probably after only a few weeks. The flaw was shown on stamps on covers addressed to the Netherlands, Canada, the USA and China. Also shown was the use of these stamps on several unusual packages, such as a cinematograph film canister sent by express transit.

**James Smith** exhibited a selection of his favourite items of postal stationery, including illustrated postcards and failures of delivery. James also displayed an envelope, addressed to the silent movie actress Mary Pickford, with a circular handstamp "P.C." for "Passed by Censor"

Recent acquisitions by **Adrian Philbey** included an 1899 1/- blue-green Pigeon Gram issue on a blank flimsy, an 1894 cover saved from the wreck of the Wairarapa, two 1951 airmail covers illustrated by Herbert Duke and two 1911 first United Kingdom aerial post cards addressed to New Zealand. In his main exhibit, Adrian displayed covers carrying the 1957 3d stamp, depicting Dr Truby King, issued to commemorate the 50th Plunket Society Jubilee, along with covers produced in 1982 for the 75<sup>th</sup> Anniversary of the Society. He also exhibited a collection of first day covers carrying the 1965 4d and 5d ANZAC Jubilee commemorative issue stamps.

---

## NOTES OF THE NORTH OF ENGLAND GROUP MEETING, 7 SEPTEMBER 2019

Eight entries competed for the Captain Cook Trophy at the September meeting of the North of England Group. A wide range of subjects were on show, which included The 1920 Victory Issue, Hand Illustrated Envelopes, Booklet Panes, The Round Kiwi, The Art of Letter Writing, Railway Newspaper and Parcel Stamps, Rakia Postal History and The 1d Dominion Stamp,

After much deliberation judge Stuart Potter awarded the Captain Cook Trophy to Harold Howard for his in depth study of the 1d Dominion Stamp and the Kiwi Medal, awarded at the judges discretion, to Paul Wreglesworth for his entry 'The Art of Letter Writing - Kiwi Style'.



*North of England Group members gathered for their biennial 12 sheet competition.*



*Harold Howard (right) receiving the Captain Cook Trophy from judge Stuart Potter.*

*Photographs courtesy of Jeff Wragg.*

Following the trophy presentation members shared some of their recent acquisitions.

**John Hepworth** showed some examples of postal stationery and a block of 18 of the 1d Kiwi perf 13½x14.

**Harold Howard** explained that New Zealand Post were no longer going to produce CALs and displayed examples of the last CAL to be issued.

**Paul Wreglesworth** brought a cover, to the US, postage paid with four counter coil pairs from the 1960 pictorial definitive issue, followed by a 1930 Marine P.O. cover posted on the RMS *Marama* on its only trip between Wellington and San Francisco.

**Jack Lindley** showed two examples of the George VI 1½d stamp with the, so called, reinserted 2, followed with postcards from the Domain, Christchurch some with Fete cancels and ended with Samoa stamps 1914-52.

## NEW PUBLICATIONS

### **Australasian Crash Mail and Mail from Other Incidents**

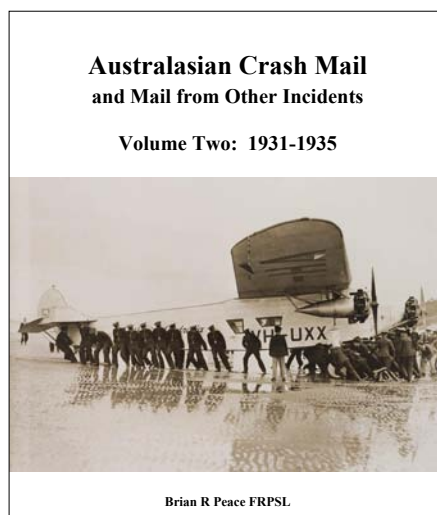
**Volume Two: 1931-1935** by Brian R Peace FRPSL, 2019, 440pp, A4, Perfect bound.

Profusely illustrated in full colour this is an unusual book. It is not simply a listing or record of accidents and incidents involving mail within, to and from Australasia. It is effectively a study of the progress of aerial mail services in Australia, New Zealand and Papua and New Guinea. It is a comprehensive examination of the challenges and hazards facing those pioneering individuals and airlines, from a social and historical, as well as a philatelic, perspective. Included is an explanation of the development of aircraft accident and incident investigation from its beginnings to the present day, tables of all recorded accidents and incidents involving air mail, tables of aircraft and crew, and a comprehensive list of references.

For aero-philatelists, dealers and auction houses, one of the most important features of this, and future volumes in the series, is the inclusion of numbers of surviving covers where such records exist.

Postpaid: £50 within UK: Postpaid Rest of the World €65, US\$80, AU\$120. For further details and payment options contact the author, Brian Peace (brpeace@ntlworld.com) or via the editor of *The Kiwi*.

As with previous publications, nett proceeds are donated to charity Website: [www.brianpeace.com](http://www.brianpeace.com)



### **Third Voyage of James Cook by Daryl Kibble**

“Cook as he has never been seen before.... through the lens of First Day and Event covers”.

This book is planned for publication in 2020. The price has yet to be announced as it will be based on the number of copies printed and the author is looking for expressions of interest by 15 December 2019. Once all registered interests are logged the price structure will be set and everyone informed. At that time, those who registered an interest can make a final decision on whether they wish to proceed to purchase. The more who have registered, the cheaper the per unit cost will be.

The book is expected to extend to around 400 pages, is fully researched, illustrated, designed and edited by Daryl and draws extensively on his own Large Gold Medal winning exhibition in the First Day Cover class. A true labour of love.

The printing will be a one-time fixed quantity print run based on the registered interest and the publication will not be marketed post publication for sale. A second printing may be forthcoming in 2030, after the 250<sup>th</sup> Cook anniversary celebrations in the USA and Canada which will add substantially to the amount of material available.

Those subscribing to the publication will be provided with updates on progress in the future, with some sample pages from the publication and an overview of contents. The date of release will be between January and March 2020.

For further information, or to register an interest in acquiring a copy of the book, contact Daryl (email: [kibbled@bigpond.com](mailto:kibbled@bigpond.com)).



# NEW ZEALAND'S FIRST AIR MAIL

- 16 DECEMBER 1919

*Lewis Giles*

One hundred years ago the New Zealand Post Office sanctioned the first official Air Mail from Auckland to Dargaville on 16 December 1919. Messrs Walsh Brothers and Dexter, owners of the New Zealand Flying School, Kohimarama, Auckland were awarded the contract.

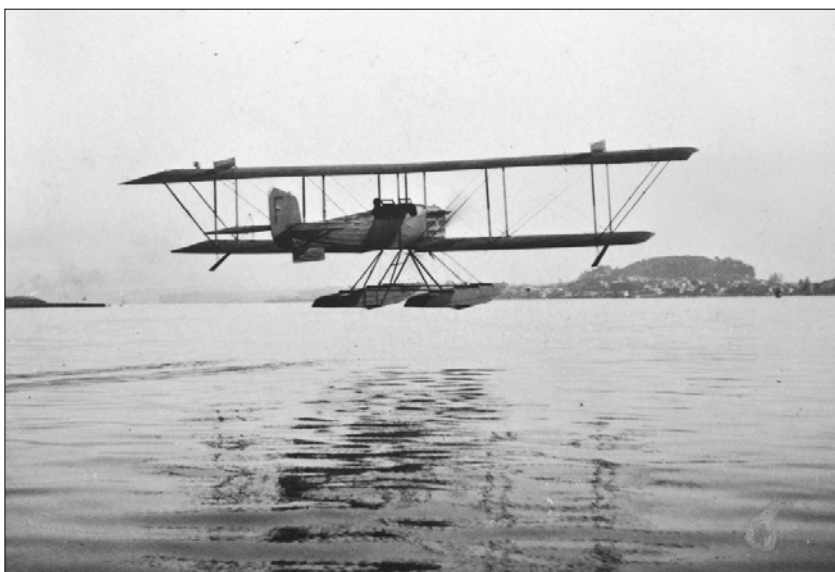
The aircraft used was the Boeing and Westervelt Seaplane No.1 which was originally designed for the US Navy, who purchased two, but found them unsuitable as trainers and sold them to the New Zealand flying School for US\$3750 each. The two planes were named *Mallard* and *Bluebird* and it was *Bluebird* was used for this flight.

The flight was piloted by George Bolt (Figure 1), who founded the Canterbury Aero Club, and joined the New Zealand Flying Club in 1916 as a Mechanic where he learned to fly.

During the Second World War Bolt was in the Royal New Zealand Air Force and the Royal Air Force. Post war he became Chief Engineer at Tasman Empire Airways until his retirement.

For this flight Leo Walsh, director of the New Zealand Flying School and in charge of this experimental flight, was both passenger and crew.

The flight north left Auckland at 10:15 am (Figure 2), loaded with 825 letters, weighing 22lbs and books and newspapers weighing a further 22lbs. The aircraft started at 10:15 am passing the North Head at about 1000 ft above the sea. Following the Rangitoto Channel she made for the Whangapararua Peninsula, crossing it at 1820 ft. Opposite Kawau she had made 2300 ft, and at Leigh 3200 ft. Shortly after passing Leigh the pilot bore inland, and when near Mangawai 3900 ft had been gained. When near her westernmost point, over the Wairoa River, she was at her utmost height for the trip, 4200 ft.



**Figure 2:** *The New Zealand Flying School's seaplane leaving Auckland.*

*[image reproduced courtesy of Auckland Libraries Heritage Collections (7-A6220)]*



**Figure 1:** *George Bolt (1893-1963).*

Having travelled a distance travelled of around 112 miles the plane landed on the Wairoa River, Dargaville at 11:50am, (Figure 3), a flight time of 1hr 35 minutes.

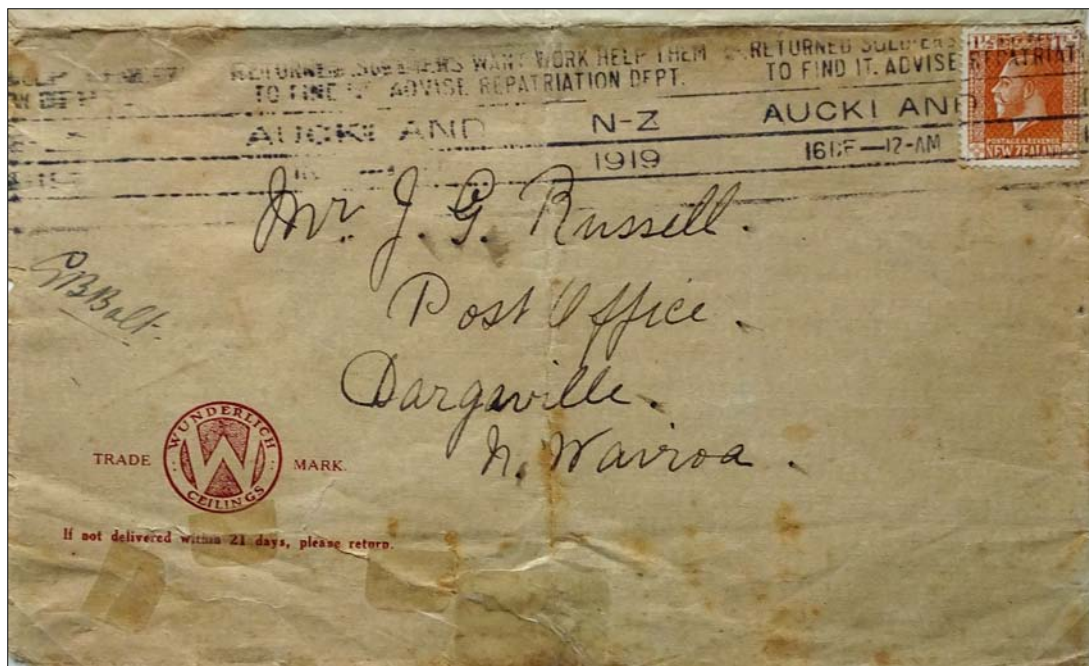
On arrival the mail was taken on board a launch sent out by the post office after which Bolt and Walsh attended a civic reception and lunch hosted by the mayor and local dignitaries. In attendance was Postmaster-General, the Hon. J. G. Coates, who, responding to the toast of his health, dwelt upon the possibilities of aerial mail carriage not only to the Auckland district but to other parts of the Dominion.





**Figure 3:** Mr Alf Randall towing the Boeing seaplane with the Royal Mail on board from mid stream, Northern Wairoa River, Dargaville, on December 16th 1919.

[Photo : S Lowe from Dargaville Aero Club archives]



**Figure 4:** Commercial cover carried on the first flight from Auckland to Dargaville, 16 December 1919.

The return flight, having been refuelled, and loaded with 1220 items of mail weighing 27lbs and a further 24lbs of books and newspapers, 51lbs in total, left Dargaville at 3:00pm. The southbound flight followed a more direct route, via Te Kopuru and Hellensville, a distance of approximately 80 miles. The plane reached a height of 4,500ft and arrived back at Auckland at 4:23pm.

Letters and cards carried on the two flights were charged at the ordinary postal rate of 1½d per half ounce with no supplement for air transport. An example of mail carried on the northbound flight, signed by the pilot, can be seen above (Figure 4) and a card carried on the return, southbound, flight is shown opposite (Figure 5). No cachets were applied to the mail carried.



**Figure 5:** Postcard carried on the return flight from Dargaville to Auckland.

Postage rate was 1½d per ½ oz. No additional airmail fee was charged.

The *Northern Advocate* for 19 December 1919 reported on the flights and claimed the experiment had been “Quite a Success”. The article concluded with speculation as to the future of an airmail service:

#### **Extension of System Intended**

*Mr Walsh expressed himself as more than satisfied with his experiences in the expedition. The machinery of the seaplane worked with the utmost smoothness throughout both stages of the trip, and there were no thrilling moments. The landscape of the Northern peninsula, he said, looked magnificent from his aerial perch. The sea was visible throughout the journey, and even when following the line of the Wairoa River the Little Barrier was in view. The route followed by the voyagers proved to be admirably adapted for an air service, and the seaplane was found an ideal machine for the work on such a route. The success of the experiment having been established, it is the intention of the Postal Department to provide for regular mail services to Dargaville, Whangarei, and Thames early in the New Year. For this purpose a contract has been entered into with the proprietary of the Flying School to carry on the preliminary service. The present machines at the school will be used until experience determines what class of more powerful fliers are required for permanent services. Upon all mail matter carried to Dargaville the ordinary rates of postage were charged, but when the regular lines are in operation there will be a special rate, the tariff for, which has yet to be determined.*

#### **Further Reading:**

Steve Lowe operates a web site or blog where he writes about some of New Zealand’s smaller, or as he refers to them, ‘3rd level’ airlines. His site, ‘3rd Level New Zealand’ is well illustrated and includes articles discussing the development of air mail services, including Bolt & Walsh’s experimental flight of 16 December 1919. - Available at: <http://3rdlevelnz.blogspot.com/2012/12/by-boeing-to-dargaville.html>



# HARRY LINLEY RICHARDSON

## – ARTIST AND STAMP DESIGNER (1878-1947)

*Andrew Dove*

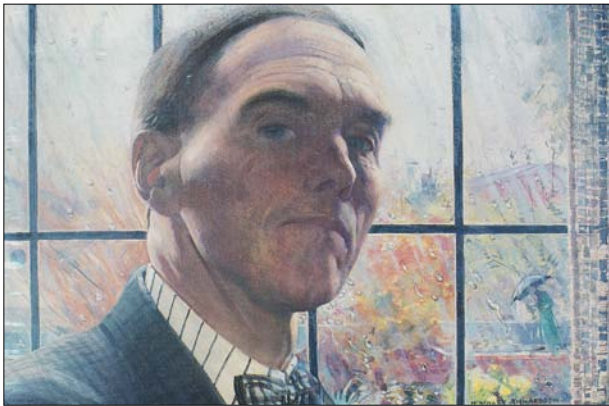
### Introduction:

Over the years, the Post Office in New Zealand has been blessed with a number of skilled designers who have secured a high reputation for the design of its postage stamps. Probably the most eminent in artistic circles was Harry Linley Richardson who is best remembered for designing the King George V definitives in conjunction with Sir Robert Heaton Rhodes.

Although this was the high point of his stamp design achievement, he produced some other issued stamps and was involved in other design exercises which never saw the light of day.

This article describes his life and work. It is entirely possible that he produced essays for other stamp designs and I would be most interested to see further examples.

### His Life:



**Figure 1:** *A self portrait of Linley Richardson (1931-34). (Ref. 1)*

Harry Linley Richardson (Figure 1) was born in Dulwich, London on 19 October 1878. After education at Alleyn's College, he went to Goldsmith's College School of Art in about 1892. In the 1890's, he produced illustrations for the publisher, Dent and, in 1900, exhibited at the Royal Academy for the first time.

In 1908 he made the move to New Zealand and started work as the Assistant Art Instructor at Wellington Technical College. On arrival, he appears to quickly become part of the art scene. Three years later, in 1911, he became a Vice President of the New Zealand Academy of Fine Arts and, in September 1915 is promoted to be the Head of the Art Department at Wellington Technical College.

He seems to have been a rather difficult character and, after demotion in Wellington, moved to Palmerston North as Head of the Art School in 1927.

Thereafter, he had a reasonably successful career and, amongst other distinctions, represented New Zealand at the 1924 and 1925 Empire Exhibitions. He had an interest in Maori culture and produced a number of portraits of Maori subjects.

He also liked to take his sketchbook with him on holiday producing many drawings of local areas (Figure 2).



**Figure 2:** *A Coastal View near Titahi Bay. A pencil sketch by Richardson*

## His Issued Stamps:

In all, five of Richardson's designs were issued by the New Zealand Post Office including the three King George V Definitives. The first of these is sometimes called the New Zealand Penny Black and is regarded as one of most successful NZ stamp designs. In 1925, he designed the commemorative set for the Dunedin Exhibition. The next were the 2/- and 3/- showing the King as Admiral of the Fleet in July 1926 and, in November 1926, the 1d depicting him as a Field Marshal. His last recorded effort was the 1931 the Arms Fiscal issue.

His first foray into stamp design was in 1910 when he was commissioned to design new definitive stamps showing the head of King George V.

It is not clear why he was given the commission as the previous issue showing King Edward VII was designed by W.R. Royle and Co in London and the one before that, the First Pictorials, had famously had an open competition which attracted a huge number of entries.

It may be that the New Zealand Post Office regretted issuing the King Edward issue in November 1909 as they were felt to be rather dull although they fulfilled their purpose to celebrate the granting of Dominion status in 1908.

In the event, when the new King ascended the throne, a new definitive was authorised and a very specification issued which included the requirement that it should be printed by the intaglio process which suggested that quality of production was a high priority. The New Zealand Post Office seem to have wanted a 'proper' artist to design it. The commission was offered to Bertram McKennal, an Australian sculptor working in London, who had designed the new UK definitives and was already designing new coinage for New Zealand. He declined due to pressure of work and it would appear that Richardson was the closest approach to a British artist at hand. On the positive aspect, he was British trained and was an elected member of the Royal Society of British Artists. On the negative, he had no experience of stamp design. This was part of the reason why it took five years to produce the new stamps.



**Figure 3:**

*The first design.*

His first effort (Figure 3) used the image made by the Court Photographer, W & D Downey, and introduced a New Zealand slant to the design by using a Māori warrior and Zealandia as supporters for the lozenge showing the King. The design seems to show his inexperience in producing a design that is satisfactory at the size of a postage stamp. Although the image appears satisfactory in enlargement, at the required small size, it seems cluttered and the image is too complex.

Although Perkins Bacon were critical of the design and suggested alternatives, it is possible that it would have been adopted if Robert Heaton Rhodes had not been appointed Postmaster General in 1912.

As a keen philatelist who specialised in the Full Face Queen's, Rhodes was more familiar with classic stamp design and, no doubt, had a clear view of what constituted a suitably dignified design. Initially, he instructed Richardson to experiment by overpainting the portrait of Queen Victoria in a FFQ with a portrait of the new king. This proved unsatisfactory and would probably have proved a challenge to Perkins Bacon to produce the die. Next, he told Richardson to model a design on the 1d Black. Richardson followed the suggestion and the new definitives were born (Figure 4). The new design was greeted enthusiastically and remained the definitive issue until it was superseded by the Second Pictorials in 1935.



**Figure 4:**

*The first issue.*



**Figure 5:**

*The Dunedin Exhibition issue.*

In 1925, the New Zealand and South Seas Exhibition was held in Dunedin and the organisers requested a special commemorative issue (Figure 5). Richardson was asked to produce a design and the pencil sketch was accepted. Richardson agreed to a novel production process which did not involve the production of a die. Instead, a photographic process was used to transfer the image onto an etched zinc plate. The 1d plate was made first and then reproductions of '½d' were made and gummed over the '1d' inscriptions before the plate was again photographed and etched. Similarly for the 4d.

It was also agreed that the stamps should be printed in two colours. This was achieved by the simple expedient of printing a solid background before the actual design was printed. These stamps were issued on 17 November 1925.

There was an interesting comment in the *New Zealand Stamp Collector* of May 25: “Yes we are going one better than Wembley (The Wembley Exhibition issue had 2 values as opposed to the Dunedin’s 3) but we believe the designs are being prepared locally – we shudder the thought”. The same journal, in its December 1925 issue, has a comment on the stamps themselves: “The recent Dunedin stamps are likely to be accorded a mixed reception and although they cannot be lauded as particularly artistic in motive the general appearance is not unpleasing and the Government Printer is to be congratulated on the manner in which he has made the most of a design which is difficult to compass in the limited confines of a postage stamp.”

Hardly a ringing endorsement.



**Figure 6:** *The 1926 New Values.*

Richardson’s next issued stamps were in 1926 when the 1d Dominion plates were worn out and increasing postage rates necessitated higher values. The resulting 1d Field Marshal and 2/- and 3/- Admirals (Figure 6) were not a great success. They were surface printed in New Zealand from plates produced by Waterlow and Sons to specific instructions from Richardson.

Their appearance was flat and comments in the philatelic press were critical. *The New Zealand Stamp Collector* of 10 February 1927 records a couple of extracts from other journals. The Victorian Philatelic Record said: “They are extraordinary productions of the jam label type, showing a portrait of a naval cocked hat of enormous size with a small profile of the King beneath it. The lower portion of the ‘picture’ is taken up by a magnificent epaulette”. *Stamp Collecting* could not refrain from commenting as well: “This design is the most hideous and poorly produced Colonial stamp that we have received for many years”.

The discussion even reached Parliament when Mr. J A Lee, the MP for Auckland East asked the Postmaster General, during a Supply debate in July 1926 (Ref. 2), whether “his attention had been drawn to an article in the *Auckland Star* which stated that a recent issue of stamps by the Department made his Majesty the King look like a Dutch Doll and that the stamps were not a credit to the Department or to New Zealand.” He went on to say that “A unique opportunity of advertising the country was offered by the issue of postal stamps, and it was a pity if the Department was going to cheesepare to such an extent that it not only produced a stamp which was not creditable to the country but which practically cartooned his Majesty.”

Richardson’s last accepted stamp design was the Arms Issue in 1931. This was the longest lived of all New Zealand stamps as it remained in use in the Dependencies until 1986.



**Figure 7:** *The Arms Stamps.*



It was, however, not without controversy when it was released. *The New Zealand Stamp Collector* of June 1931 contained an article which was headed 'THE WORLD'S WORST STAMP'. The author (unsigned but probably RJG Collins) continued: "*It is with regret that one feels impelled to claim for a recent New Zealand issue the distinction of being the world's worst stamp.*"

His criticism is directed especially to the 1s3d of which he says "*The 7/- and 10/- values are bad enough, but the 1s3d is the one, which has been designated as the 'world's worst stamp'. It is printed in such a curious shade that it is difficult to describe, and the nearest approach that occurs to one is the colour of an unripe lemon. This use of the colour means that unless the stamp is held very close to one's eyes, it is impossible to make out the design.*"

Following further protests, including a correspondence between the Christchurch Philatelic Society and the Prime Minister, the colour was changed to orange-yellow.

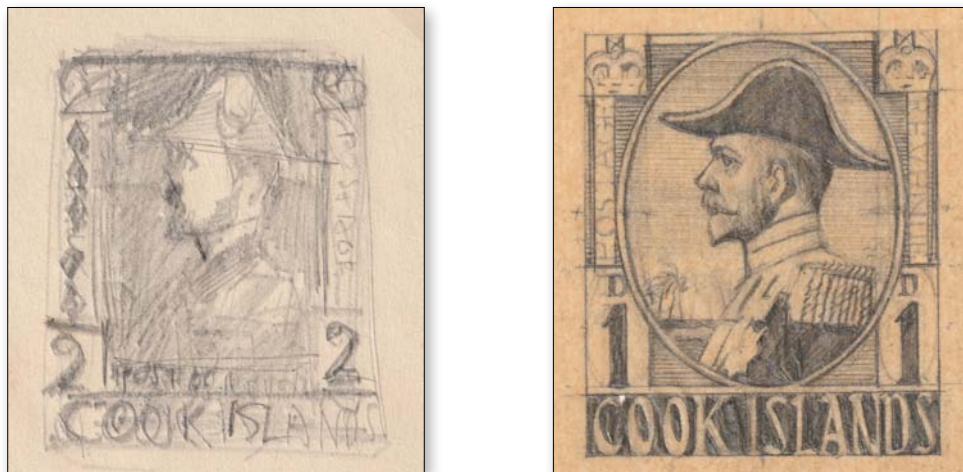
It is interesting to note that the same article noted that the name of the designer was not released by the Government and that perhaps this was because he was "*rather ashamed of the accepted work*".

This was Richardson's last accepted stamp design and one wonders whether the adverse criticism of the issue was the cause of his withdrawal from the field.

### **His Unissued Designs:**

As noted above, I am aware of two unaccepted designs but would very much like to hear of any more. Richardson is identified as the originator of both of these designs on stylistic and technical grounds. For the Cook Islands design, I have a photographic essay with his signature.

The first is from 1914 when the Postmaster General, Heaton Rhodes, decided that a new issue was required to replace the Makea and Torea issues of the Cook Islands. The full story is told in *The Postage Stamps of New Zealand, Vol. V* (Ref. 3).



**Figure 8:** *The Proposed Design for the new Cook Islands stamps*

On Rhodes instructions, the Secretary of the Post Office asked three Wellington artists whether they would be interested in submitting designs. Richardson agreed and started work on the drawings. His early sketch showed the King and this developed into a design which shows a remarkable resemblance to the Admiral High values of New Zealand which would be issued in 1926 (Figure 8).

Within a month, Rhodes seems to have had second thoughts and instructed that work was suspended until an estimate of the cost had been made and considered by the Cabinet. The outbreak of war then intervened and no further progress was made.

Just over a year later, Richardson complained that he had not received any compensation for his efforts but, by this time, Rhodes had left for London to undertake his role with the New Zealand Red Cross Society and the new Postmaster General, Joseph Ward, had taken office. He had no knowledge of the commission and suggested that the Cook Islands Administration should pay the appropriate fee.

Unfortunately, the Minister for the Cook Islands had no more knowledge of the arrangement than Ward and declined the invitation.

In late 1916, the Post Office eventually paid up.

As a postscript, in May 1917, there was another initiative to issue a new set of stamps but, for reasons of cost, the KGV recess printed Richardson designed set was put on sale having been overprinted for use in the Cook Islands.



**Figure 9:** Pencil sketch, mock-up and photographic essay for a peace/victory stamp.

The second unissued design (Figure 9) is more problematic. They were lots 2506 and 2507 in the 2015 Spink sale of Len Jury's superb collection of the 1920 Victory Issue (Ref. 4). In the catalogue, the comment is: 'Attributed to H. Lynley Richardson due to the use of his design for the New Zealand King George V issue.'

This attribution seems very reasonable. It certainly appears that this was a design to celebrate/commemorate the end of the First World War as the motto on the essays is 'E Bello Surgam Pax' (From War Springs Peace), although this is rather less martial and imperialistic than the issued stamps which celebrated victory rather than peace. The design elements of the essay are similar to the issued designs and, indeed the mock-up has used a dismembered ½d King George V stamp to create parts of the design.

An interesting question, to which I have no answer, is how and why this essay arose.

The Perkins Bacon Company Proof Books contain a copy of the photographic essay shown above (Figure 9(c)). The page containing the essay was illustrated in the Royal Philatelic Society of London's Supplement to *The London Philatelist* celebrating the Spring Stampex Display in 2019 (Ref. 5).

Presumably, Linley Richardson must have produced the design unprompted or been commissioned. The design must have been forwarded to Perkins Bacon for comment.

However, *The Postage Stamps of New Zealand, Vol. 1* (Ref. 6) clearly records the process for the procurement of the issue. In summary, it says that the Postmaster General, Sir Joseph Ward, was due to travel to the United Kingdom anyway and it was agreed that he would arrange for the design and production of the issue. He did this by commissioning De La Rue to produce the design and to manufacture the plates.

So there is no mention of any competition or invitation to other designers to submit ideas. In the event, the issue was criticised as only the 1½d was distinctively from the Dominion. The other values appeared to celebrate the Empire.

A bit of a mystery.



## Summary:

Richardson was certainly an interesting character who never reached the heights as a creative artist but played a significant part in the development of New Zealand Stamp design.

Although his output was small, he was the first stamp designer to incorporate Māori motifs into his images. He was a great admirer of Augustus Hamilton, the ethnologist and Director of the Dominion Museum in Wellington who went to great lengths to preserve and celebrate Māori culture. In his non-philatelic artistic work, Richardson had a lot of contact with the Māori and painted a number of portraits of tribal elders.

## References:

1. Anon, *HARRY LINLEY RICHARDSON 1878–1947, Painter, Designer, Illustrator and Teacher*, Pub. Manawatu Art Gallery, 1986.
2. *New Zealand Parliamentary Debates*, Vol. 209, pp 979-980, July 1926.
3. Collins RJG, *The Postage Stamps of New Zealand, Vol. V*, pp136-138, pub. Royal Philatelic Society of New Zealand, 1967.
4. Anon, *The Len Jury Award-Winning Collections of Postal History, Stationery, 1913 Auckland and 1920 Victory Issues*, pub. Spink London, Sale 7 October 2015.
5. Stock R and Walton F, Eds, 'RPSL Members' Exhibition of King George V Material, Spring Stampex 2019', *The London Philatelist*, Vol 128, Supp, p22, pub Royal Philatelic Society London, February 2019.
6. Collins RJG & Fathers HTM, *The Postage Stamps of New Zealand, Vol. 1*, pp380-382, pub. Royal Philatelic Society of New Zealand, 1939.

# NEW ZEALAND

**Ask for your free  
Postal Auction catalogue!**

Specialised, simplified, postal history, Chalons,  
revenues, errors, all manner of NZ material,  
as well as worldwide!

Email [ashford@stampsale.com](mailto:ashford@stampsale.com) (or mail/phone/fax)

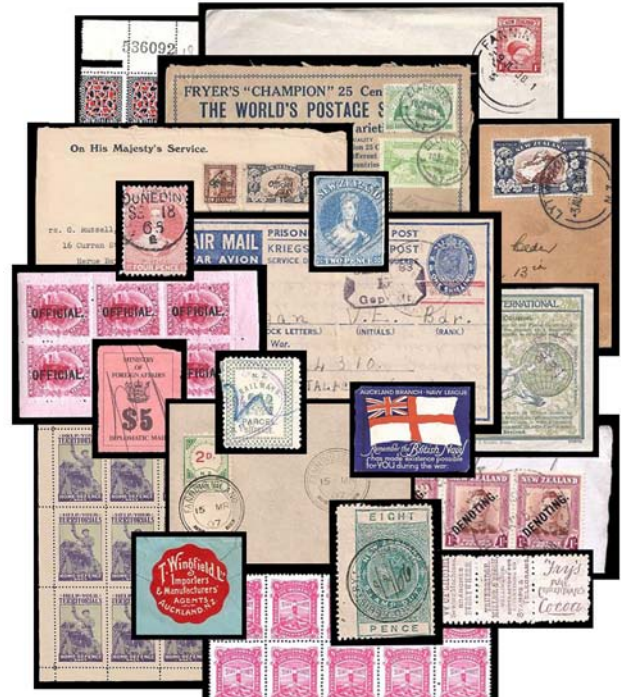


**Ashford Stamps Ltd**  
P.O. Box 9845, Newmarket, Auckland 1149, New Zealand.  
Email [ashford@stampsale.com](mailto:ashford@stampsale.com)  
Fax +64 9 520 5947 Telephone +64 9 520 5946  
Managing Director: Brian Rumsey, member NZSDA, APS

# STEVEN ZIRINSKY

MEMBER PTS, APS, NZSDA, APTA, PPS

**NEW ZEALAND**



PO BOX 230049, Ansonia Station, New York, NY 10023 USA  
[szirinsky@cs.com](mailto:szirinsky@cs.com)

[www.zirinskystamps.com](http://www.zirinskystamps.com)  
[@ZirinskyStamps](https://www.facebook.com/ZirinskyStamps)

## DETAINED FOR POSTAGE

### – BUT MUCH MORE

**Gerald J Elliott MNZM RDP FRPSL FRPSNZ**

This 1861 cover below (Figure 1) has been detained by the New Zealand Post Office, and this is confirmed by the two Auckland datestamps: 10 October 1861 (unframed c.d.s. on reverse (Figure 2)) and 14 November 1861 PAID unframed c.d.s. on obverse in red, a total of 35 days. It should be recorded that until 1 April 1862, only mail addressed overseas would have been treated in this way, the only exception being the Soldiers/Seamen Concession Rate Letters, as prior to that date letters could be sent either paid or unpaid and the use of adhesive postage stamps was not mandatory.



**Figure 1:** Front of the 1861 cover.

*Postal Markings – Manuscript “Detained for Postage” and Figure “6” in red indicating 6d Paid.*

*PAID AUCLAND NEW ZEALAND 14 November 1861 - unframed c.d.s. in red.*

*PAID FF LONDON 18 February 1862 – framed c.d.s. in red.*



**Figure 2:** Reverse of the 1861 cover.

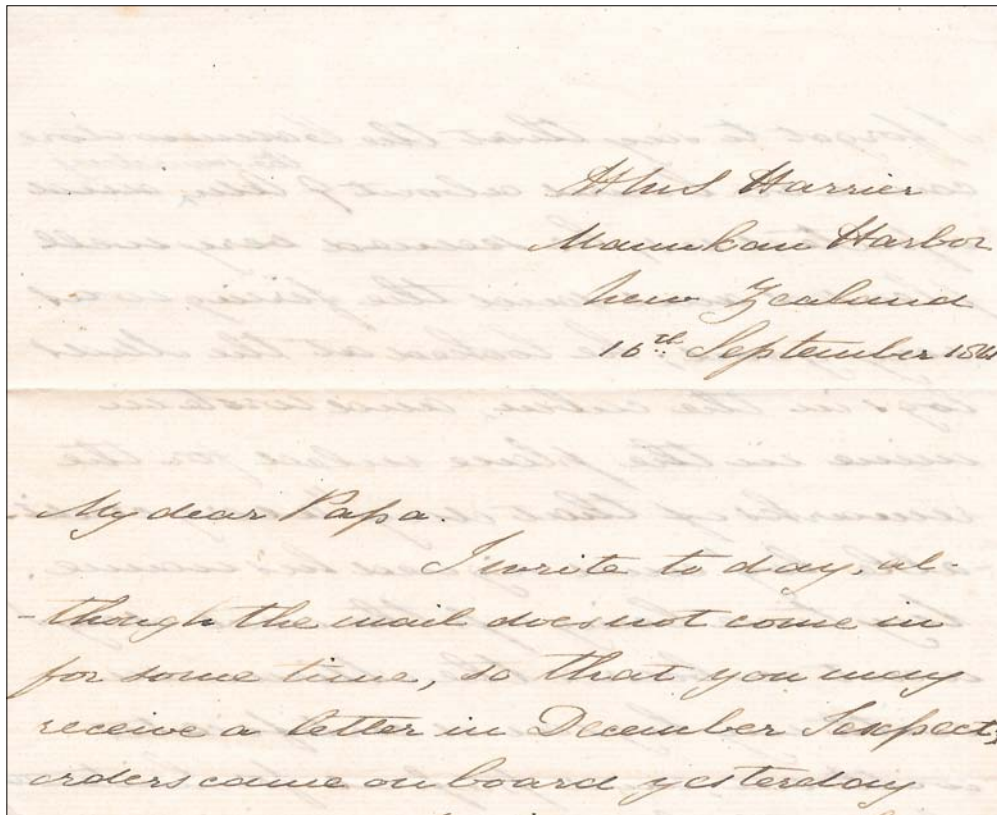
*Postal Markings – AUCLAND NEW ZEALAND 10 October 1861 A - unframed c.d.s.*

From the information shown above, it is apparent that eventually the postage of 6d for a ½ oz letter was paid in full and the letter finally placed in the Homeward Mail Bag. According to the Post Office Notices placed in the *The Southern Cross* newspaper, there appears to be two possible ships which were going to Sydney; the *Swordfish* which left Auckland on 23 November 1861 for Newcastle and Sydney, or the *Constance* which left on 2 December 1861, direct to Sydney, both would have reached Sydney prior to the departure of the P&O *Salsette* which departed for England on 22 December 1861, the mail finally arriving at Southampton and destination on 18 February 1862.



## - BUT MUCH MORE

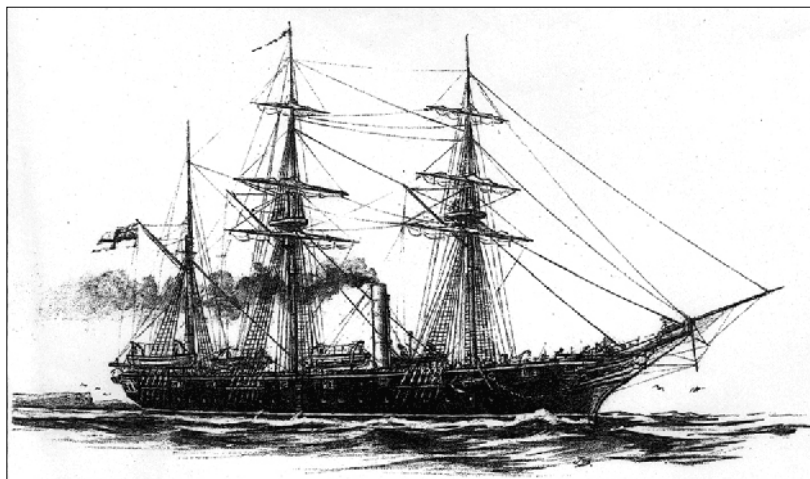
Fortunately, the envelope still contained the original letter, headed, “HMS *Harrier*, Manukau Harbour, New Zealand, 16 September 1861” (Figure 3). A four sided letter, written by Lieutenant Thomas B. Falcon between 16 and 18 September 1861. HMS *Harrier*, arrived in New Zealand on 4 June 1861 as a replacement of HMS *Fawn*.



**Figure 3:** The opening lines of the four sided letter from Lieutenant Falcon to his father, written on board HMS *Harrier* whilst at anchor in Manukau Harbour.

### **HMS *Harrier*:**

It transpires that the letter was written just prior to HMS *Harrier* (Figure 4) departing the next day (19 September 1861) for a cruise to the Fiji Islands.



**Figure 4:** HMS *Harrier*.

## HMS *Harrier* - Ships Log:

Extract from the Ship's Log:

19.9	Proceeded to sea, on cruise of the Fiji Islands
7.10	Arrived Rewa Roads (Fiji)
8.10	At anchor
10.10	Steaming for Kantavu Island, anchored
12.10	Returned to Rewa Roads
14.10	At Rewa Roads and anchored
19.10	Steaming to Levuku, Ovalau Island, anchored
22.10	Left the Fiji Islands for Norfolk Island
31.10	At Norfolk Island, anchored off Sydney Bay
1.11	Left Norfolk Island
8.11	At Auckland

From the above details, it confirms and explains the 35 days delay (10 October to 14 November) in paying the postage, as Thomas B. Falcon, was on the Fiji cruise, which didn't arrive back until 8 November 1861.

## HMS *Harrier* - Honours:

Ten Officers, sixty Seamen and ten Royal Marines from HMS *Harrier*, were awarded the New Zealand Medal (1863-1864) for their services at:

Paparoa	1 August 1863
Mere Mere	30 October 1863
Rangiriri	20 November 1863
Te Awamutu	21 February 1864
Rangiaowhia	21 February 1864
Gate Pa, Tauranga	29 April 1864

Lieutenant Thomas B. Falcon, received the New Zealand Medal 1863-1864.

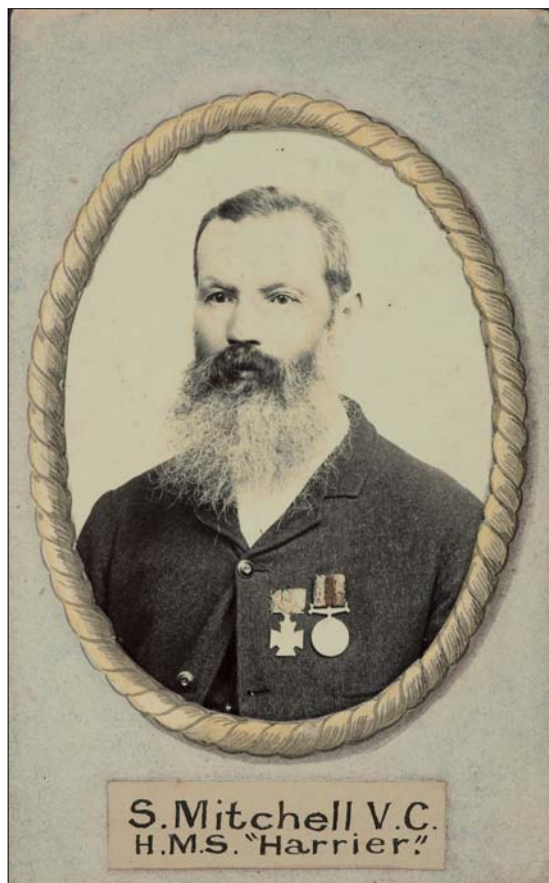
Samuel Mitchell, Captain of the Foretop of HMS *Harrier* was awarded the Victoria Cross (26 July 1864).

## Samuel Mitchell VC (1841 – 1894):

Samuel Mitchell was born on 8 September 1841, at Aspley, near Woburn, Bedfordshire, England, the son of William Mitchell, a labourer and later a Wesleyan minister, and his wife, Eleanor Field. Mitchell entered the Royal Navy as a naval apprentice in August 1857. He served in the ships *Crocodile* and *Excellent*, before joining the screw sloop *Harrier* in August 1860, and sailing from Portsmouth for the Australia station in December of the same year. He was soon made the captain's coxswain and captain of the mizentop, and later advanced to captain of the foretop. By 1865 he was boatswain's mate (Ref. 1).

Edward Hay, the leader of the naval brigade and captain of the *Harrier*, fell mortally wounded. As Hay's coxswain, Mitchell had stayed close to him in the assault and carried Hay out through the rear of the pa under fire, even though Hay had ordered Mitchell to abandon him. For this act, Mitchell was awarded the Victoria Cross on 23 July 1864, and was promoted to Petty Officer, first class.

Accounts of the action imply that Mitchell alone rescued Hay. This may not have been so. One eyewitness noted that Hay was carried out by Mitchell and another soldier, and that a sailor, himself wounded, also assisted. However, the dying Hay 'particularly requested the Commodore to get something for Mitchell his coxswain'. Mitchell received his Victoria Cross from the Governor of New South Wales at a public ceremony in the Sydney Domain on 24 September 1864 (Figure 5).

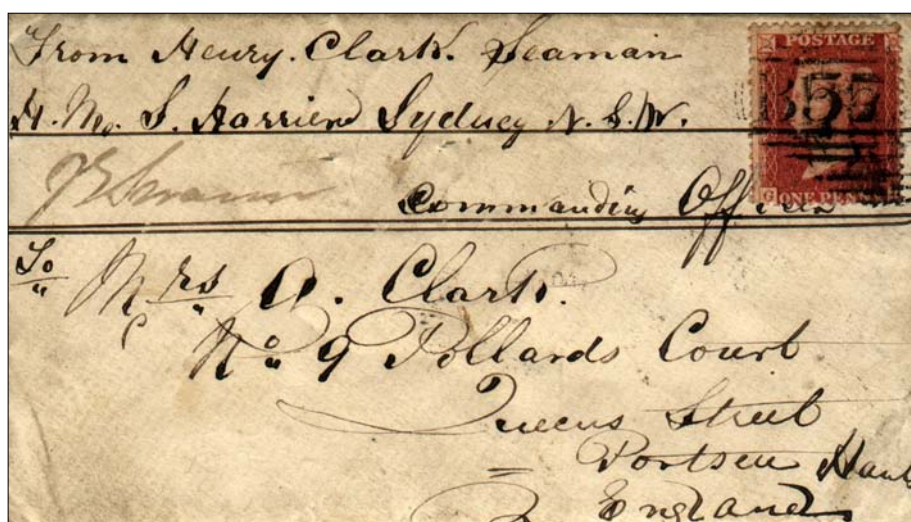


*The Victoria Cross*

**Figure 5:** Reproduced courtesy of Museum of New Zealand  
Te Papa Tongarewa collection O.013405/01

I have not recorded any HMS *Harrier* Concession Rate seaman's letters from New Zealand during the Maori Wars, and the letter below (Figure 6) is the only HMS *Harrier*, New Zealand item known.

Further details of HMS *Harrier* and other Royal Navy Ships engaged in the New Zealand Maori War can be found at: [www.ellott-postalhistorian.com](http://www.ellott-postalhistorian.com)



**Figure 6:** The only recorded seaman's letter from HMS *Harrier* while at Sydney.  
Sydney, New South Wales, 22 May 1863, Portsmouth 21 July 1863.

#### Reference:

1. Fairfax D, 'Samuel Mitchell: Biography', *Dictionary of New Zealand Biography*, 1990. - Available from Te Ara website: <https://teara.govt.nz/en/biographies/1m44/mitchell-samuel>



# NEW ZEALAND 1960 PICTORIAL ISSUE

## – VENDING MACHINE STAMPS

Murray Willocks and Paul Wreglesworth

### Introduction:

Since October 1904, when the New Zealand invented Dickie-Brown stamp vending machine was patented, coin in the slot machines were an important method of dispensing stamps until they were finally taken out of operation in 1982. The convenience of easily purchasing single stamps anytime of the day made them an important and popular method of dispensing stamps.

The 1960 Pictorial series were in use from July 1960 to July 1967 yet just two stamps, the 1d Karaka and the 3d Kowhai, were made available as coils for use in vending machines. These two values, alone or in combination, covered most of the key postal rates for the period. The only exception was when some rates, including the second class inland letter rate and the postcard rate to commonwealth countries, increased from 2d to 2½d from September 1961 (Ref. 1).

Traditionally, in New Zealand, coils for vending machines were produced from standard sheets of stamps by the New Zealand Post Office using trained operatives and a range of special machines to facilitate the various stages of the process. Some of these are shown here (Figures 1, 2 and 3). The same technique was used to produce counter coils and Lightning Stamp Affixer coils. There was therefore no reason to consider any alternative process when looking to produce the various types of coils for the 1960 definitive series.

### New Zealand Production:



**Figure 1:** *The start of the coiling process  
- joining trimmed sheets into a continuous roll.*

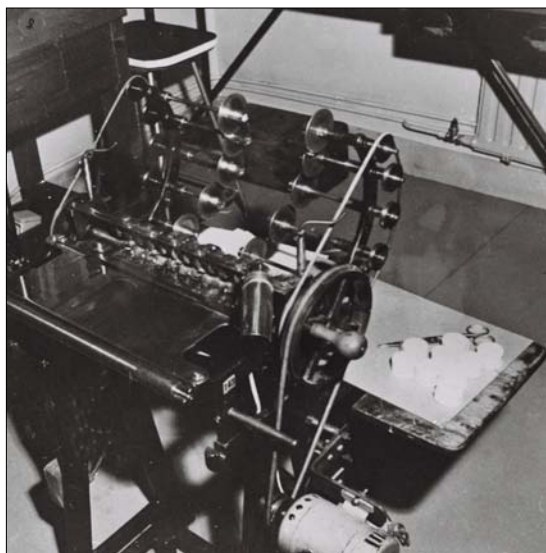


*A coin-in-the-slot stamp  
vending machine.*

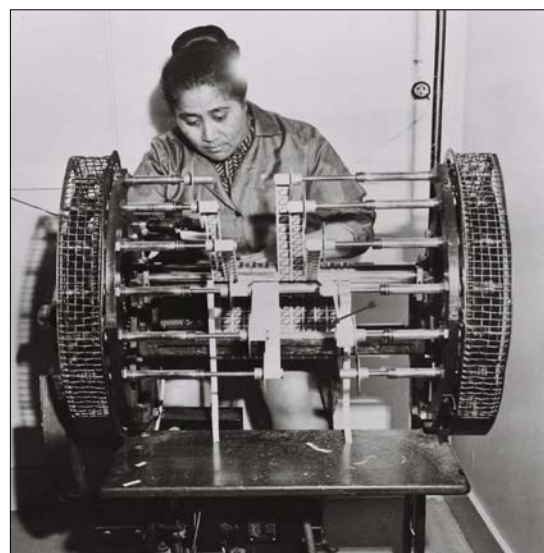
The 1d Karaka and 3d Kowhai were issued on 1 September 1960. Printed by Thomas De La Rue, London, and supplied to the New Zealand Post Office initially on uncoated vertical mesh esparto paper with an upright multiple 'NZ and star' watermark. Perforations gauged 14½ x 14.

Starting with standard sheets of 240 stamps the right hand selvedge was removed completely and the left hand selvedge trimmed to 4mm. The sheet was then split in half crosswise creating sheets of 12 columns and 10 rows.

The half sheets were then joined by adhering the right side of the sheet on to the left hand trimmed selvedge. The process was repeated until 80 of the mini-sheets were joined together to form a composite sheet. A coloured end paper and lead paper/wrapper, indicating the number of stamps, denomination and total value of the roll were added. These were stamped with the month and year of production.



**Figure 2:** Close up of one of the coiling machines.



**Figure 3:** The slitting and coiling machine.

The sheets were cut and rolled into reels of 960 stamps with the stamps upright rather than horizontal as would be the case when producing the lower value counter rolls. Having been produced from standard sheets pasted together a coil join is found after every twelfth stamp (Figure 4). These coils can also be identified by trimmed or missing perforations along the top or bottom edges of the stamps as a result of the lack of precision when cutting the combined sheets into individual rolls.

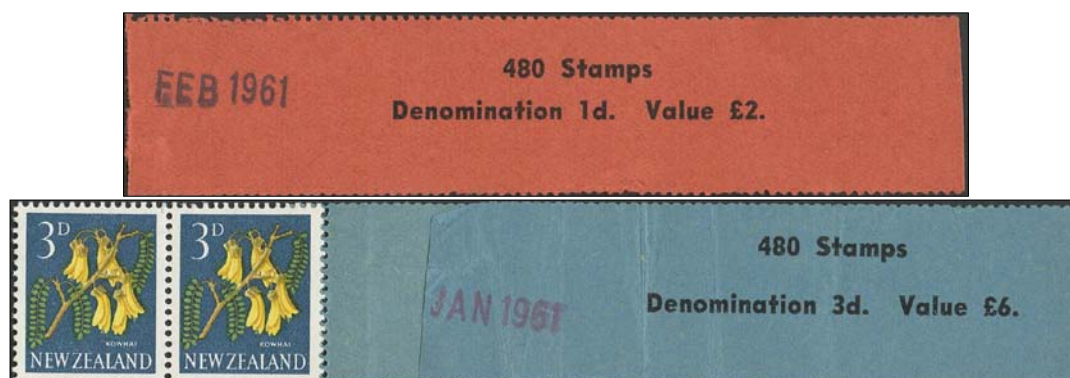
The most common reel size consisted of 960 stamps (Figure 5) although reels of 480 stamps were produced (Figure 6) for smaller Post Offices where demand was lower (Ref. 2).



**Figure 4:** the coil join found after every twelfth stamp, visible from the front (left) and back (right) of the stamps.



**Figure 5:** Pale green wrapper/lead paper for a 960 stamp roll of the 1d vending machine stamp. Coiling date July 1961.



**Figure 6:** Lead papers for 480 stamp rolls for 1d (coiling date February 1961) and 3d values (coiling date January 1961).



## De La Rue Production:

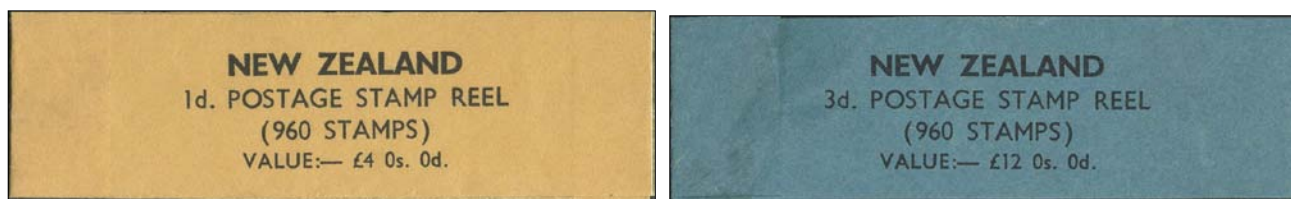
Early in the life of the new definitives it appears that Thomas De La Rue were approached and asked to produce continuous rolls for use in vending machines as New Zealand Post, who referred to them as ‘Dickie’ reels, indicated that they were “having problems with composite rolls produced locally.” (Ref. 2).

Late in 1963 De La Rue used a continuous web printing process to produce coil stamps which did not involve the subsequent joining of sheets of stamps to create composite sheets. Special photogravure cylinders were produced and whilst the precise layout is not known there are constant flaws which repeat every 13 stamps. The best of these is seen as a small white flaw at the top of the bottom right flower (Figure 7).



**Figure 7:** A small white flaw repeats every 13<sup>th</sup> stamp on some continuous coils.

While these stamps were printed on the same unsurfaced esparto paper as used for regular sheets of stamps the watermark was now sideways and the paper mesh is vertical. The stamps were perforated on the web, gauging 14½x 13, cut into sheets 960 stamps in length, whereupon each column was separated and rolled. No leader or end papers were used, rather a wrapper containing identifying information (country, denomination, number of stamps and value) was used to protect the reel (Figure 8). 4,000 reels (1,200 3d and 2,800 1d) were shipped, in four cases, on the *Ceramic* which was due to sail from the UK on 30 May 1963 and arrived in New Zealand in July.



**Figure 8:** Wrappers produced by De La Rue to protect the vending machine reels during shipping. These were undated.  
*De La Rue only produced vending machine reels of 960 stamps.*

Although the De La Rue produced continuous rolls had no joins, as was normal with the locally produced coils, the tension created in the vending machine occasionally caused the perforations to separate. In this case the coil was repaired by gluing a piece of perforated stamp paper over the break. This can give the appearance of a join as found with the local coils (Figure 9).



**Figure 9:** A broken coil repaired with a small piece of perforated paper as seen from front (left) and back (right).

The De La Rue produced reels did not overcome the problems seen with the locally manufactured coils and no further orders were placed for their continuous rolls. All subsequent vending machine coils were produced in New Zealand from standard sheets using the tried and tested process of generating composite sheets and then coils with start and end/wrapper papers.

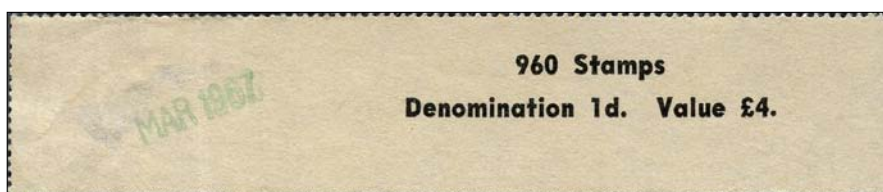
## Return of Production to New Zealand:

During 1965 De La Rue began printing the 1d and 3d stamps on a higher quality chalk surfaced paper and these were subsequently converted to coils. Manufactured from standard sheets these once more showed the coil joins typical of local manufacture (Figure 10).

It would appear that only the larger rolls of 960 stamps were prepared during this period. The lead paper/wrapper and end papers for the 1d coils were now a pinkish-buff colour (Figures 11 and 12) whilst the papers associated with coils of the 3d value were still blue.



**Figure 10:** Coil strip of 1d stamps on chalky paper with join between third and fourth stamps. Typical damage caused by the vending machine grippers can be seen (circled).



**Figure 11:** Pinkish-buff lead paper for 960 stamp rolls of the 1d value, coiling date March 1967.



**Figure 12:** End paper from a 1d, chalky paper, vending coil. Coiling date March 1967 stamped on the back.



**Figure 13:** Blue lead paper for a 3d, chalky paper, vending coil. Coiling date November 1966.

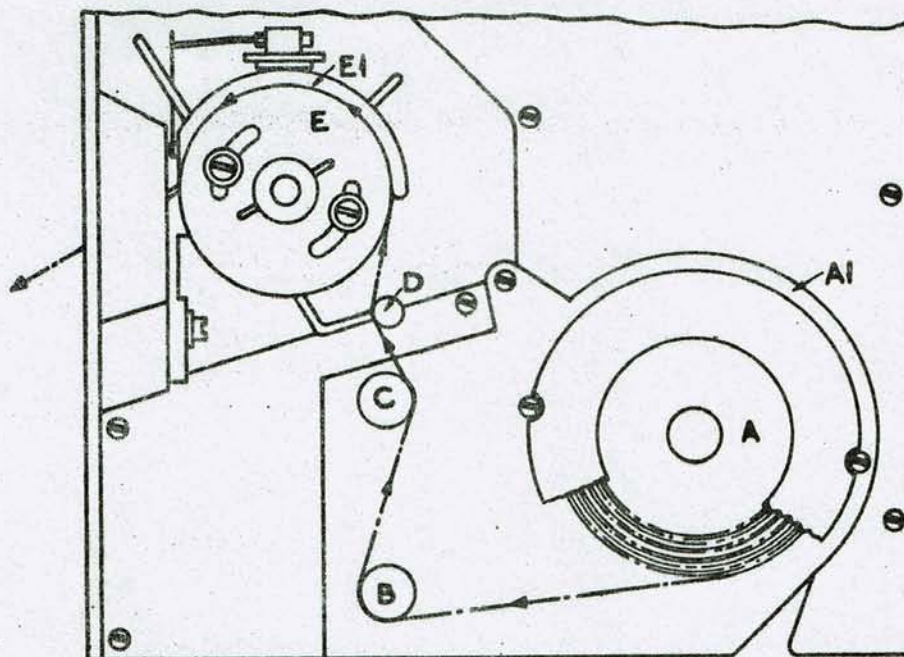
## Maintenance of Vending Machines:

Post office staff were trained in the use and maintenance of the vending machines. A coil join strip used in the Post Office training school is shown below (Figure 14) and the instructions for loading and maintaining coin-in-the-slot vending machines is shown on page 208 (Figure 15).



**Figure 14:** A mint, pre-cancelled, coil join strip used for training purposes.





### DROP COIN TYPE

The following are the mechanical directions for charging machines with stamps as shown in diagram

1. Remove stamp drum cap E1 by releasing locating-pin and turning clockwise.
2. Remove stamp roll retaining plate A1 by turning anti-clockwise.
3. Fit stamp roll on centre roller "A" feeding the stamps off at the bottom of the roll.
4. Replace stamp roll retaining plate by turning clockwise.
5. Feed stamps under roller "B" around the opposite side of roller "C" then under the "empty" slide arm roller "D" and pass over the stamp drum "E" making sure the perforations in the stamps are located correctly on the stamp drum pins.
6. Replace stamp drum cap with toothed edge facing to the front of the machine making sure pin is located correctly in holding arm.
7. Lift the "empty" slide positioned at the top of the machine and roll the stamps back to take up slack, this will hold the "empty" slide in correct position.
8. Test the machine with coins until two stamps have been ejected. Check the stamps to see that perforations have been correctly located on the drum.

Maintenance of the machines is to be carried out as follows:

Daily: Check the reject aperture to make sure that the chute is clear.

Weekly: Examine the coin chutes for cleanliness and remove any dust or foreign matter with clean cloth. Check the "empty" slide movement for ease of operation.

Do not use any tools which will damage the chutes to remove foreign matter.

U430

DWG. 37014

Figure 15: Post Office instructions for loading and maintaining coin-in-the-slot vending machines.



## Damaged Coil Stamps:

Vending machines could be temperamental in their operation and minor damage caused by the grippers within the vending machines was not uncommon as seen in Figure 10. More significant damage due to malfunction of the grippers, or because of damage caused by vandalism of the machines could be more significant as seen below (Figures 16 and 17).



Figure 16: Damaged 1d stamps from a locally produced coil.



Figure 17: A 1964 cover to Australia, with parts of four 3d stamps, paying a double airmail rate of 6d per ½oz. The 3d stamps are from a De La Rue produced coil with perforations gauging 14½x13.

## References:

- (1) Naish DG & McNaught KJ, *The Postage Stamps of New Zealand, Vol. VI*, pp477-478, pub. Royal Philatelic Society of New Zealand, 1977.
- (2) Post Office correspondence held in the National Archives of New Zealand.
- (3) Kundin SJ, *The Vending and Affixing Machine Coils of New Zealand*, pub. Royal Philatelic Society of New Zealand Inc., Ed Vincent BG, pp79-80, 2009.

## A DATE FOR ALL YOUR DIARIES

2 2  
LONDON

INTERNATIONAL  
STAMP EXHIBITION

2 TO 9 MAY  
2020

# YVETTE WILLIAMS (1929-2019)

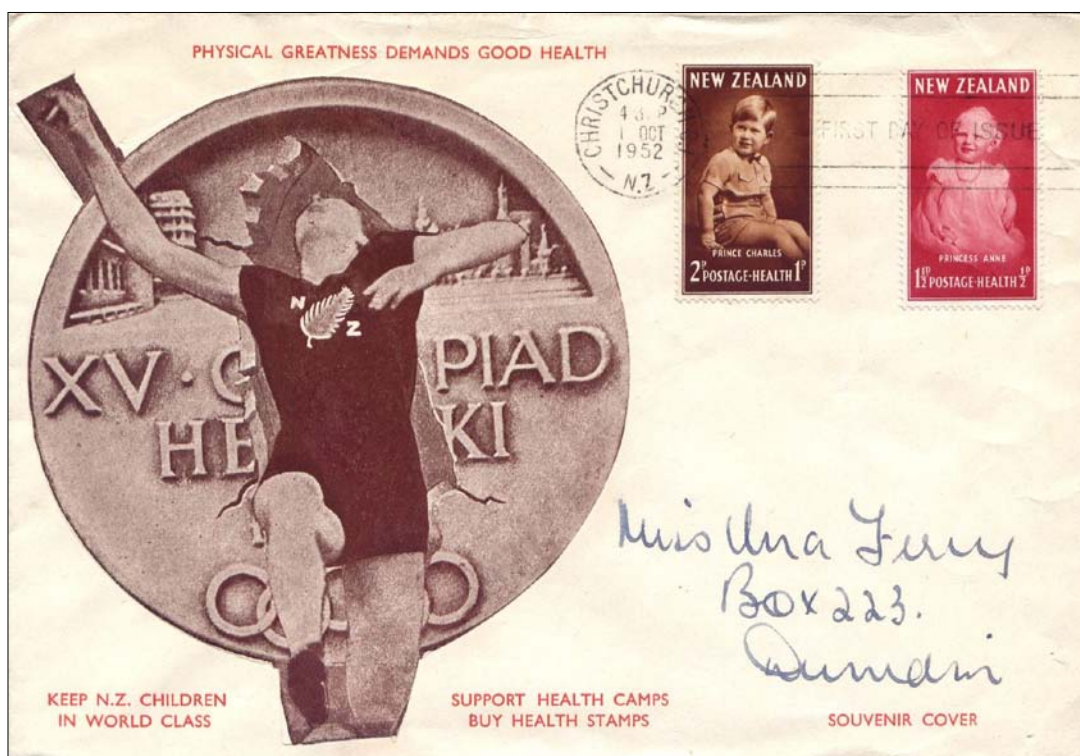
## - OLYMPIC GOLD MEDAL WINNER 1952

*Adrian Philbey*

Yvette Winifred Corlett DNZM MBE (née Williams) was born in Dunedin, New Zealand, on 25 April 1929 and died earlier this year, on 13 April 2019, at the age of 89.

Competing for New Zealand at the 1952 Olympic Games held in Helsinki, Finland Yvette won the gold medal in the women's long jump setting an Olympic record of 6.24m in the final of the event on 23 July 1952. Yvette was an accomplished athlete in many fields, excelling in the long jump, shot put, discus, javelin, hurdles and pentathlon events, as well as in netball and basketball, winning numerous national titles. She won a gold medal in the long jump and a silver medal in the javelin at the British Empire Games in Auckland in 1950. She broke the world record for the women's long jump, with a distance of 6.28m, when competing at Gisborne, New Zealand, on 20 February 1954. In that same year the British Empire and Commonwealth Games were held in Vancouver, Canada where Yvette won gold medals in the long jump, discus and shot put events. On 11 December 1954 she married Charles Armistice (Buddy) Corlett and together they had four children.

In preparation for Yvette Williams' return to New Zealand after the 1952 Helsinki Games, a souvenir cover celebrating her achievement was issued in Christchurch (Figure 1) and cancelled on 1 October 1952, the first day of issue of the health stamps which depicted Princess Anne (1½d + ½d carmine-red) and Prince Charles (2d + 1d brown). A similar cover was issued in Dunedin with a circular rubber stamp applied by hand in black ink added to this cover on Yvette Williams' return to Dunedin on 23 October 1952; the stamps on these covers were cancelled on the same date. (Figure 2). A further souvenir cover, cancelled Dunedin 23 October 1952 and signed in ink by Yvette Williams is shown opposite (Figure 3).



(image reduced)

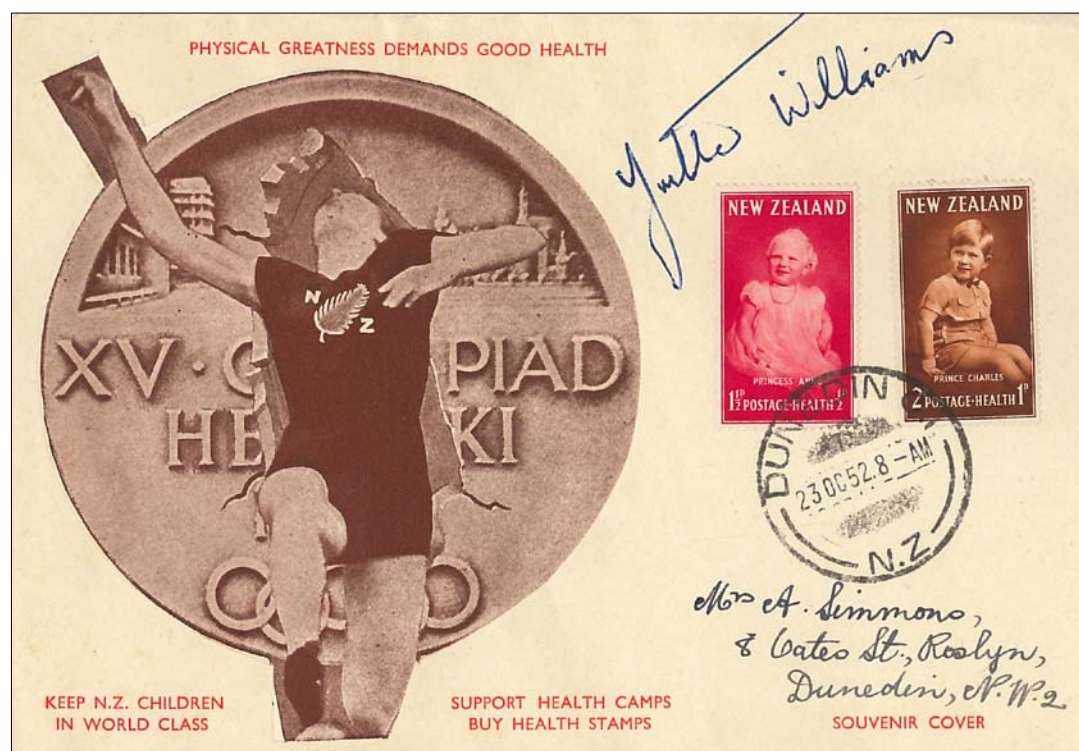
**Figure 1:** New Zealand health first day cover, posted at Christchurch, (Jones: H52.1FA) (Ref. 1). The cover has red text and a brown label, glued on, depicting Yvette Williams in the long jump event at the 15<sup>th</sup> Olympiad in Helsinki. Some first day covers lack the red text.





(image reduced)

**Figure 2:** New Zealand health souvenir cover (Jones: H52.A1AA) (Ref. 1), posted at Dunedin, with a hand stamped circular black cachet commemorating the return of gold medalist Yvette Williams to Dunedin on 23 October 1952. Covers cancelled on the same date, but without the red text and with a circular blue cachet, are listed as Jones: H52.A1AB.



(image reduced)

**Figure 3:** New Zealand health souvenir cover (Jones: H52.1FA) (Ref. 1) signed by Yvette Williams and cancelled at Dunedin on 23 October 1952, the date of her return to Dunedin from the Helsinki Games.

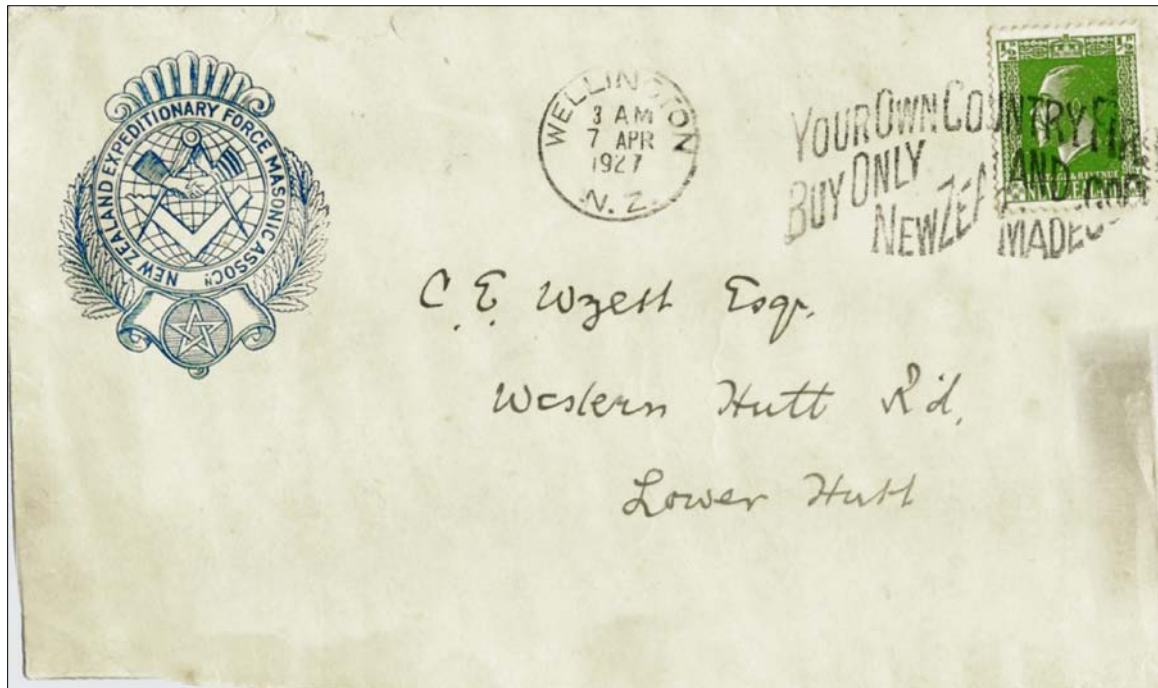
## Reference:

1. Jones S, *Illustrated First Day Covers of New Zealand 1933-2000, Part 1: Health*, Pub. by 3P, Lower Hutt, New Zealand, 2008.



# NEW ZEALAND EXPEDITIONARY FORCE MASONIC ASSOCIATION

John Watts



*Local Wellington letter posted in April 1927 showing the Masonic Association crest on the cover.*

The Association was established in France in 1917 by New Zealand Freemasons of the 1<sup>st</sup> N.Z.E.F.M.A.

The Association continued through the Second World War as the 2<sup>nd</sup> N.Z.E.F.M.A. whose members in 1946 decided to wind up its affairs, allowing its members to become part of the 1<sup>st</sup> N.Z.E.F.M.A. which was still very active in New Zealand at that time .

The Association which is centred in the Manawatu area, is still operating with a New Zealand wide membership. The original criteria for membership, still applicable today, was:

*A Brother must have served in any Military conflict overseas during and since the Second World War for which a Campaign medal has been awarded to them.*

He must also be a member of a Freemasons Lodge, whether New Zealand constituted or any other recognised Grand Lodge at the time of joining the Association

The criteria were reviewed in January 2013 and the following was added:

*Those Servicemen who were unable to serve abroad but were vital to the war, or any other and subsequent combat efforts, and who qualify under all other criteria may become an 'Associate Member' of the Association.*

The Association today offers the following:

- An 'Annual Reunion' of members and their wives or partners, usually in January each year.
- A representative attendance at the annual ANZAC service held by a Lodge, or Lodges each year, with active participation.
- Invitation to attend Lodge meetings.

The current annual dues for membership is \$10

*[Information drawn from the NZEFMA Membership Application Form].*

# INDEX FOR VOLUME 68 (2019) (Whole Numbers 393-398) OF *THE KIWI*: THE JOURNAL OF THE NEW ZEALAND SOCIETY OF GREAT BRITAIN

## LIST OF CONTRIBUTORS

Clark R, Dove A, Elliott G, Favier P, Giles L, Hancox T, Kibble D,  
Leonard P, Lindley J, Möller K, Peace B, Philbey A, Stalker D, Stimson J,  
Tunncliffe A, Ward T, Watts J, Wilkinson M, Willocks M, Woods P, Wreglesworth P.

## ARTICLES/INFORMATION PUBLISHED

TITLE	Page No.
1853 Cover from Wellington to Liverpool, The Life Story of	100
1880 Queen Victoria Long Type Postal Fiscal Stamps - Rare Specimens and New Discoveries	156
1893 Adsons - Stamp Design Printed on the Gum - Fact or Fiction?	96
1934 Health First Day of Issue	137
1934 Health First Day - Groundhog Day	133
1960 Pictorial Definitive Issue - Chambon Perorations	65
1960 2/- Definitive Issue - Does the 'VALUE £4' block exist?	16
1960 Pictorial Issue - Vending Machine Stamps	204
1967 Pictorial Issue - The Te Aro Unofficial Counter Coils	142
Accounts of the Society	34
Alternative Mail Services, New Zealand's (Part 8: Black Sheep)	160
Australasian Crash Mail and Mail from Other Incidents, Volume Two: 1931-1935 (Publication)	190
Annual General Meeting, Agenda for 68 <sup>th</sup>	186
Annual General Meeting, Minutes of 67 <sup>th</sup>	33
Armistice Stamp Show, Dunedin, 9-11 November 2018. The	30
Artwork for New Zealand Stamps - Who Was the Artist? - A Follow Up	24
Auction Notification/Appeal, Annual Society	77,84,112,150,185
Auction, Results of 2018 Annual Society	32
Awards to Members, Competitive	6,45,77,113,149,187
Bulleid & Co, John, Oamaru, A Further Example of Early Junk Mail?	125
Cachets Applied to Interrupted New Zealand Airmail (New Publication Review)	47
Customised Advertising Labels - The 2018 Pack	138
Captain Cook's Voyage of Discovery, Royal Mail Special Delivery	49
Captain Scott and His Motorised Sledges (Follow Up)	123
Captain Scott - The Cardiff Connection	178
Cook, Third Voyage of James (New Publication - expressions of interest sought)	190
Competitive Awards to Members	6,41,77,113,150,185
Counter Coils, KGVII and QEII - Some Questions	104
Cover from Blenheim, New Zealand, to Mohawk, Ontario, Canada, (January 1873 - Genuine or Manipulated?	20
Cover from Blenheim, New Zealand, to Mohawk, Ontario, Canada, (January 1873 - Genuine or Manipulated?, Further Observations on the	168
Detained for Pstage - But Much More	200
DHL Label on a Postcard (Request for Help from Members)	31
DHL Label on a Postcard (Request for Help from Members) - A Possible Answer	69
Earthquake Mail (Request for Help from Members)	70
Editorial	4,40,76,112,148,184
Express Delivery Service and its Limits, The	90

Hand Illustrated Covers and Sketches of Arthur Herbert Messenger	87
Hand Painted Envelopes - Addressed to Captain Herbert Duke	28
Health Stamps, A Farewell to (Part 5)	57
Health Stamps, A Farewell to (Part 6)	126
Illustrated Covers - Doodles	173
Honour for two Members (John Mowbray & Paul Wreglesworth)	6
Index for Volume 68 of <i>The Kiwi</i>	213
Insufficiently Stamped Postcard	124
i-Site Tourism Labels, 2018 - Evolution of the Taranaki Booklets	11
Meeting Reports	
Main Society	
- 26 January 2019: Instructional Markings (Andrew Dove)	43
- 31 March 2019: Postcards with Stories	79
- 25 May 2019: WWII PoW Mail (Lorraine Maguire)	115
- 30 July 2019: Sorting Workshop, (Paul Wreglesworth, John Stimson)	151
5 October 2019 (Oxford Meeting)	188
Midland Regional Group	
Members Meetings: 27 October 2018, 16 February 2019	8,83
North of England Regional Group	
Members Meetings: 10 November 2018, 23 February 2019, 11 May 2019, 7 September 2019	8,83,122,189
Scottish Regional Group	
Members Meetings: 13 April 2019, 20 July 2019	121,188
Meetings, Programme of Society, for 2019	5
Meetings, Upcoming National	77,105,113
Membership	5,41,77,113,149
Mrs Purdon Illustrated Covers Remain as Popular as Ever	50
Mrs Purdon Inspires UK Artist, New Zealand Native Birds	51
New Zealand Expeditionary Force Masonic Association	212
New Zealand's First Air Mail - 16 December 1919	191
New Zealand Post - Stamp Issuing Programme for 2019	48
New Zealand Post - Unscheduled Issue, Royal Visit 2018	10
Publications - Terry Hancox	187
QEII Definitive Booklet Flaw and Unofficial Coil (Request for Help from Members)	106
Richardson, Harry Linley - Artist and Stamp Designer (1878-1947)	194
Ship-Side, Mail Posted - Provision for Late Fee Mail	52
Ship-Side, Mail Posted - Late Fee Mail	95
Strange & Co, W, Christchurch - Early Junk Mail?	86
Strange & Co, W, Christchurch - Early Junk Mail? (Follow Up)	124
TPOs, Keeping up to Date with New Zealand	85
TPOs, Keeping up to Date with New Zealand	155
Wages Tax Stamps, Postal Usage - Caveat Emptor	26
Williams, Yvette (1929-2019) - Olympic Gold Medal Winner 1952	210

## A DATE FOR ALL YOUR DIARIES

*There will be a meeting of the Society, during the exhibition, on Thursday 7 May (14:00-16:00)*







**Phone: (03) 579 5650.**

**PO Box 5086, Springlands, Blenheim 7241.**

The web site is up and running allowing orders to be placed directly once you have registered. Currently there are over 20,000 stamps, covers, postcards etc on the site and all are illustrated.

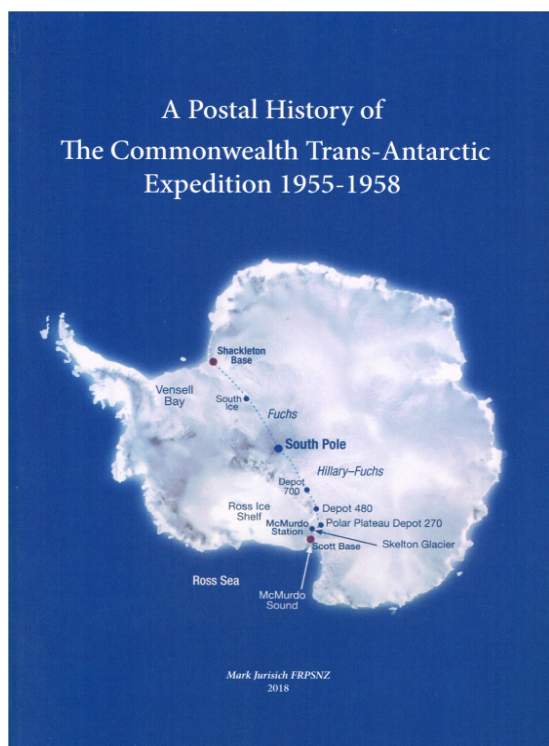
Email us if you have any problems registering or navigating around the site.

There is a search facility allowing you to search for your Interests. e.g. Entering the word 'Railway' brings up nearly 200 different items.

### **Website categories include:**

- NZ definitive issues from Full Face Queens to the current issues.
- NZ Commemoratives from the 1906 Christchurch Exhibition onwards.
- NZ Health and Christmas issues.
- Booklets.
- Air mail stamps and covers.
- Life Insurance.
- Postage Due and Express stamps and covers.
- Postal fiscals and Revenue stamps.
- Cinderellas.
- Various miscellaneous issues and covers. Postal fiscals and Revenue stamps.
- New Zealand Postal History.
- New Zealand Postal Stationery.
- Antarctic stamps, Postcards and Postal History.
- Various British Commonwealth and Foreign Country's stamps and covers.

## **Latest Classic Stamps Publication.**



### **A Postal History of The Commonwealth Trans-Antarctic Expedition 1955-1958 *Mark Jurisich. FRPSNZ.***

57 pages with 120+ covers in full colour.  
Many of the covers are signed (Hillary, Fuchs etc).

Covers the story of the first crossing of Antarctica from the initial investigations in 1953 through to the Auckland home coming parade in 1958.

The story is based on the letters and covers sent to and from Antarctica by organising committees, expedition members philatelists and souvenir hunters.

A limited number has been printed and are available from Classic Stamps Ltd.

Price: NZ \$45 (incl GST); \$39.13 (ex GST).  
Postage is at cost (ask for price).

# PUBLIC & POSTAL AUCTIONS STAMPS & POSTAL HISTORY

Each year we offer thousands of items for sale via our Public & Postal Auctions and Direct Sale Lists. **Phone, email or visit our web site for more information.**

- NEW ZEALAND STAMPS
- COLLECTIONS & ACCUMULATIONS
- ESTATE LOTS
- MARITIME MAIL
- ERRORS
- WORLD STAMPS
- FULL FACE QUEEN COVERS
- VARIETIES



## 2019 Colour Catalogue of New Zealand Stamps



- Colour Photos & Prices for every New Zealand Stamp from 1855-2019
- Many Price Changes
- Only **\$10.00** post paid anywhere in New Zealand or **\$15.00** post paid anywhere in the world

Phone, email or visit our web site for more information.

**PHONE** +64 9 522 0311

**FAX** +64 9 522 0313

hello@aucklandcitystamps.co.nz  
www.aucklandcitystamps.co.nz

1 Ngaire Ave Newmarket | PO Box 99988 Newmarket Auckland 1149 New Zealand

Dealers in fine stamps  
of the World, Specialists  
in New Zealand and the  
Pacific Islands.

**Auckland City Stamps**  
Licensed Auctioneers

EST. 1974

