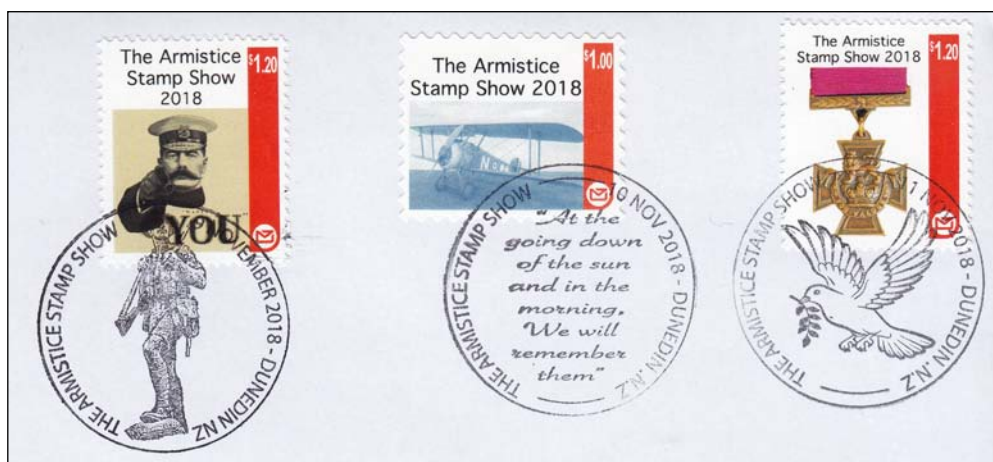




THE KIWI

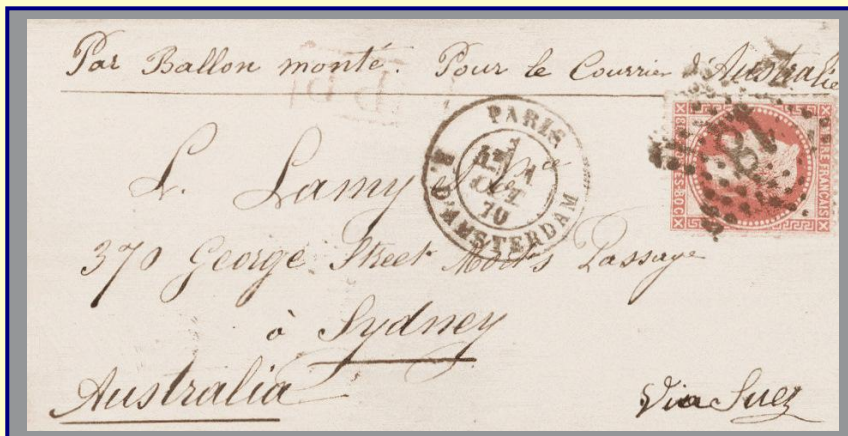
JOURNAL OF THE NEW ZEALAND SOCIETY OF GREAT BRITAIN



A look back at the 2018 CALs (page 138).



Superb material for the discerning



The above cover was an example of the world's first airmail and is the only known Paris ballon post cover addressed to Australasia. In 2009 Mowbrays Australia sold this 1870 Siege of Paris ballon monté cover for NZ \$238,625 – then a record Australasian price for a philatelic item.



The above 13 August 1855 cover from Auckland to Birmingham, England, bears a pair of New Zealand's very first 1d full-face queen stamps. Only three covers bearing 1d SG1 FFQs are known – this being the earliest recorded date. It was acquired in 2009 by John Mowbray for a client for NZ \$138,000.

Mowbray Collectables buys and sells collections, stamps and postal history.
What can you offer? Contact our friendly staff in the first instance.

Mowbray collectables offers New Zealand and world collections, stamps and postal history in monthly postal auction catalogues – free samples available!

Mowbray Collectables

Private Bag 63000, Wellington, New Zealand 6140

☎ + 64 6 364 8270

fax + 64 6 364 8252

mowbray.stamps@xtra.co.nz
www.mowbraycollectables.co.nz

THE NEW ZEALAND SOCIETY OF GREAT BRITAIN

Honorary President

Keith C. Collins

Honorary Chairman

John Stimson

Mead Cottage

Boulsters Lane, Maidenhead, SL6 8TJ

☎07710-336064

e-mail: john.m.stimson@gmail.com

Hon. General Secretary & Librarian

Michael Wilkinson

121 London Road,

Sevenoaks, Kent, TN13 1BH

☎017-32456997

e-mail: mwilkin799@aol.com

Honorary Membership Secretary

Mrs Esmé G. Diamond

9 Ashley Drive, Walton on Thames,

Surrey, KT12 1JL

☎01932-223280

e-mail: esmegdiamond@gmail.com

Honorary Treasurer

Paul Woods

57 Grosvenor Drive, Whitley Bay,

Tyne & Wear, NE26 2JR

☎07446-936840

e-mail: pvdw1958@yahoo.co.uk

Hon. Packet Secretary

Professor John Hepworth

2, Carnoustie Close,

Fulwood, Preston, Lancashire, PR2 7ER

☎01772-861709

e-mail: j.d.hepworth@tinyworld.co.uk

Hon. Editor of *The Kiwi*

Paul Wreglesworth

37 Blakelow Road,

Macclesfield, Cheshire, SK11 7ED

☎01625-420694

e-mail: kiwieditor@gmail.com

Webmaster

Bob Clark

nzsgb1@googlemail.com

Website: www.nzsgb.org.uk

Representative in New Zealand

John Watts

jlwatts463@gmail.com

CONTENTS

Editorial	112
- <i>The Kiwi</i> - Advertisers in this Issue	
- <i>'The Kiwi'</i> - Current Advertising Rates	
- <i>'NZSGB'</i> - Current Subscription Rates	
Society News	113
- <i>Membership News</i>	
- <i>Competitive Awards to Members</i>	
- <i>Auction Appeal</i>	
Forthcoming Meetings	114
- <i>London</i>	
- <i>Midland, North of England, Scottish Regional Groups</i>	
Notes of Meetings Held	
- <i>London (May 2019)</i>	115
- <i>Scottish Regional Group (April 2019)</i>	121
- <i>North of England Regional Group (May 2019)</i>	122
Follow Up To Previous Articles	123
- <i>Captain Scott and His Motorised Sledges</i>	123
- <i>Insufficiently Stamped Postcard</i>	124
- <i>W. Strange & Co, Christchurch - Early Junk Mail?</i>	124
- <i>John Bulleid & Co., Oamaru - A Further Example of Early Junk Mail? (Jack Lindley)</i>	125
- <i>A Farewell To Health Stamps - Part Six (John Watts)</i>	126
- <i>1934 Health First Day - Groundhog Day (Peter Favier)</i>	133
- <i>1934 Health First Day of Issue (Robert Clark)</i>	137
- <i>Customised Advertising Labels - The 2018 Pack (Alan Tunnicliffe)</i>	138
- <i>1967 Pictorial Issue - The Te Aro Unofficial Counter Coils (Paul Wreglesworth)</i>	142

*The Society is affiliated to: The Association of British Philatelic Societies
the New Zealand Philatelic Federation
and the Association of Scottish Philatelic Societies.*



MOWBRAY COLLECTABLES

**is proud to support the New Zealand Society of Great Britain
as its major sponsor**

EDITORIAL

I have given over more space than usual in this issue to the report of the last meeting held in London. I was not able to attend but those who did were treated to a superb display from Lorraine Maguire who told the story of many soldiers who took part in World War Two, through the letters they wrote and received. I think that it is worth sharing.

Those of you who are interested in the Health issues will, I hope, not be disappointed with this issue. John Watts continues his retrospective on Health stamps and there are two separate articles on the 1934 Health issue. Peter Favier and Robert Clark each take a slightly different look at the confusion surrounding the date of issue of that year's stamp. Perhaps a timely reminder that Peter Favier's Healths collection is being auctioned later this year and catalogues are now available from Jos Gregson (see page 136 for further details).



THE KIWI - ADVERTISERS IN THIS ISSUE

ADVERTISER	PAGE
Mowbray Collectables	Inside Front Cover
Ashford Stamps Ltd.	132
Steven Zirinsky	132

ADVERTISER	PAGE
JMA Gregson	136
Classic Stamps Ltd.	Inside Back Cover
Auckland City Stamps	Back Cover

"Please mention the NZSGB when you speak with our advertisers"

THE KIWI - CURRENT ADVERTISING RATES

	Full (single insertion)	Full (3 or more consecutive)	Half (single insertion)	Half (3 or more consecutive)	Quarter (single insertion)	Quarter (3 or more consecutive)
Full Colour	£90	£75	£75	£60	£50	£40

NZSGB - CURRENT SUBSCRIPTION RATES

Membership rates are £20 (within the UK) and £25 (overseas) - with printed copy of *The Kiwi*.

Members who prefer to receive an electronic version of the journal (*e-Kiwi*), downloadable from the Society's web-site, as an alternative to the paper copy pay £20 regardless of country of residence.

Payment can be made by various means including PayPal ('gift' option). Details from the membership secretary esmegdiamond@gmail.com or via the web-site.

THE SOCIETY WEB-SITE AS A RESOURCE FOR MEMBERS

The Kiwi (now downloadable in pdf format)

- * Vol. 1-63 (1952-2014) available to all in pdf format.
- * Vol. 64-67 (2015-18) available to members only.
- **password required - contact the editor of *The Kiwi*.**
- * Vol. 68 (current year) - available to *e-Kiwi* subscribers.



Society web-site: www.nzsgb.org.uk

SOCIETY NEWS

MEMBERSHIP NEWS

New Members:

A warm welcome to:

T Layman, Berkshire



COMPETITIVE AWARDS TO MEMBERS

Congratulations to members who were successful at:

ABPS Northern National (Perth) - 12-13 April 2019

Member	Subject of Entry	Class	Frames	Mark	Award
Alexander McCulloch	New Zealand George V Surface Printed Stamps	Traditional	4	78	Vermeil
David Stalker	New Zealand - A Study of the 1960-1967 Pictorial Definitives Counter Rolls	Traditional	1	87	Gold
Paul Woods	New Zealand Duty Stamps – The Early Years 1867-1879	Revenue	5	86	Gold

Annual Congress of the Association of Scottish Philatelic Societies (ASPS) - Perth, 12-13 April 2019

Member	Subject of Entry	Class	Mark	Award
John Brown	New Zealand Farming	Thematic	66	Bronze Silver
George Henshilwood	A Taste of Antarctica - A Contrast in Styles	General Class (Post 1900)	81	Large Silver Gilt
Alexander McCulloch	New Zealand George V Surface Printed Stamps	General Class (Post 1900)	80	Large Silver Gilt
Lachlan Philby	Scouts in New Zealand and Australia	Junior	-	Alba Silver
David Stalker	New Zealand - 2009 KiwiStamp - No value Indicated	General Class (Post 1900)	77	Small Silver Gilt

- see page 121 for a report on the ASPS Congress.

ANNUAL SOCIETY AUCTION

Material is still required for the auction that will be held after the AGM in November. Full details were published in the May issue of *The Kiwi*. Descriptions of lots should be sent to: Dove697@btinternet.com

A DATE FOR ALL YOUR DIARIES

2 2 LONDON INTERNATIONAL STAMP EXHIBITION 2 TO 9 MAY 2020

FORTHCOMING MEETINGS

NEXT MEETING OF THE SOCIETY

The next meeting of the Society will be held on Saturday **27 July 2019**

at the **Union Jack Club**, Sandell Street, London, SE1 8UJ

14:00 - **Sorting Workshop** (Sidefaces and 1d Universals)

John Stimson and **Paul Wreglesworth** will lead this workshop and try to help members through some of the common problem areas found with these issues. Bring a perforation gauge and magnifying glass if you have them and any stamps that are giving you problems. We will cover as many aspects as possible including dies, watermarks, mesh and perforations.

There will be a committee meeting in the morning starting at 11:00 am

MIDLAND REGIONAL GROUP

The next meeting of the Midland Group will be held on Saturday **26 October 2019** at the usual venue, St Anne's Church Hall (behind the Church) Parkhill, Moseley, Birmingham B13 8EU starting at 14:00. Will members please bring along some items of interest or a mini display.

Group Contact: - Ian Samuel ☎ 0121 449 0849

NORTH OF ENGLAND REGIONAL GROUP

The next meeting of the North of England Group will be held on Saturday **7 September 2019** at St. Luke's Church, Lodge Road, Orrell starting at 12:30. 12 sheet competition followed by items of interest.

Group Contact: - Jack Lindley ☎ 0161 705 1074 e-mail: lindleyjack@aol.com

SCOTTISH REGIONAL GROUP

The next meeting of the Scottish Group will be the Summer Meeting on Saturday **20 July 2019**. It will be hosted by David Edwards in Edinburgh starting at 12:30.

Group contact: - Adrian Philbey ☎ 0141 562 5817 e-mail: adrian.philbey@ed.ac.uk



THE SOCIETY WEB-SITE AS A RESOURCE FOR MEMBERS

Campbell Paterson's Bulletin and Newsletter

The *Newsletter* produced since 1949 and the *Bulletin* between 1963 and 1993 are packed with offers, information and articles and form an incredible resource for researchers.

With the permission of David Holmes of Campbell Paterson, every copy (word searchable) is available to members via our website.

Society web-site: www.nzsgb.org.uk



MEETINGS HELD

NOTES OF THE MEETING HELD, IN LONDON, 25 MAY 2019

The morning session was for items of interest and new acquisitions. **Robin Gywnn**, visiting from New Zealand opened with a postcard printed for the New Zealand Cycling Touring Club printed in a distinctive shade of pink.

Robin then asked if anyone was aware of the The Great Irish Stamp Scandal of the 1950s and Robin then showed a stamp catalogue from Shanahans Stamp Auctions Ltd, who were a respected firm of auctioneers, mainly dealing in the sale of furniture. They were approached by a man named Paul Singer who derived a profit from a stamps without risk scheme. All went well until a burglary at the auction house resulted in the collapse of the scheme which was exposed as a fraud. A court case in May 1959 resulted in the two principals of the auction house being charged with fraud and receiving custodial sentences, Paul Singer made a court appearance, but absconded before sentencing.

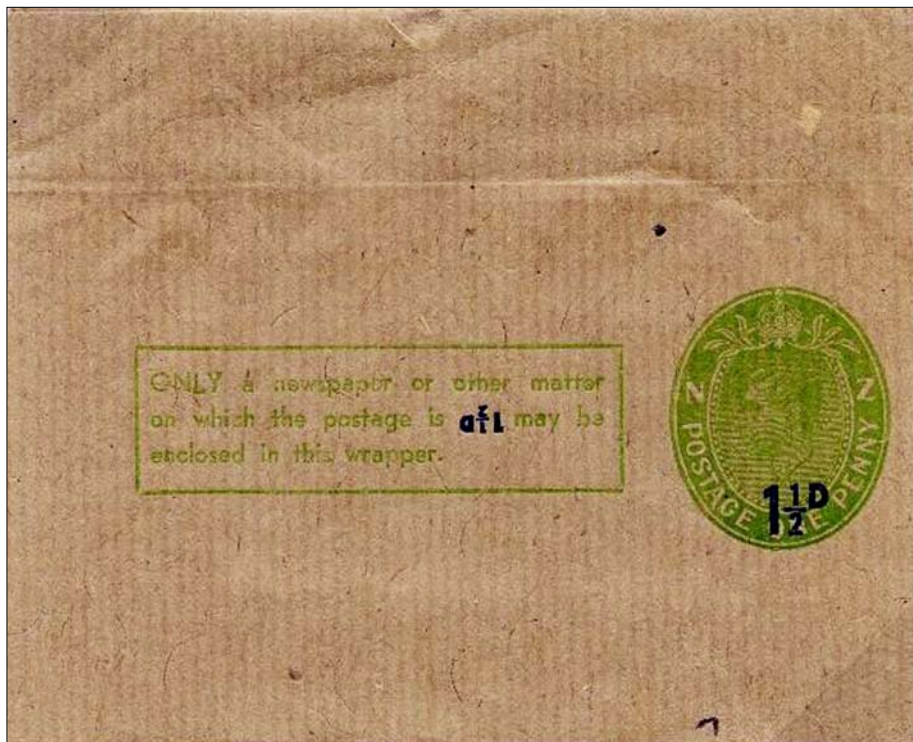
Lewis Giles showed two letters form Palestine to the US both with 'OAT' markings, discussion took place regarding where these (Onward Air Transmission) marks had been applied and possible routes.

Keith Collins showed examples of the 1d Kiwi and the 2d Whare stamps, from the 1935 Pictorial issue, whose colour had been affected by the sulphurous atmosphere around Rotorua, making the correct identification of the 2d Brown Orange shade more difficult.

Paul Woods showed part of his Revenue exhibit that had recently been awarded a gold medal, he is anxious to contact any other collectors of revenue stamps within the Society.

Lorraine Maguire asked for any information regarding a postcard which showed, around the picture, four facsimile of the 1898 issue the back of the card was printed in German

Stephen Schumann (USA) had sent scans of two rare items. The only known used examples of the Edward VII Registered Envelope (Samuel EB3b) with registration fee amended from 3d to 2d in manuscript following a reduction in the rate from 2 January 1908, and the only known unused example of the George VI newspaper wrapper with the 1½d value inverted in the text box (Samuel FE12a variety). Shown below.



The afternoon session was devoted to a display from **Lorraine Maguire** on New Zealand World War Two Prisoner of War Mail. She actually called her display “Kiwis in Captivity” and said she did not mean the feathered kind, or the local population. Rather than concentrating on markings, mail routes etc., she has researched the stories of over 80 Prisoners of War for which she had mail and who were interned in Italy and Germany. This includes their backgrounds in New Zealand, enlistment and brief military history. She said she could relate to these young men and the effects on their families, having lived through those times, her own brother dying in Egypt and having four cousins all fighting overseas.

New Zealand declared war on Germany on 3 September 1939, simultaneously with Australia, France, India and Great Britain. Volunteers in the First Echelon, the Fourth Infantry Brigade and support troops arrived in Egypt in February 1940. Further Echelons reached Egypt throughout the war, so that the maximum strength of the Second New Zealand Infantry Division reached nearly 35,000. New Zealanders saw action in Greece, Crete, North Africa and Italy. Total casualties numbered over 6,000 killed in action and over 8,400 Prisoners of War (PoW), of whom 500 died in captivity.

Over 4,000 ‘Kiwis’ were sent directly to German POW camps from campaigns in Greece and Italy. Because the Italians were the senior partners in the North African Campaign, Allied Military who were captured in North Africa were sent to Italian PoW camps. On the capitulation of Italy in September 1943, most of the Allied PoWs in Italian hands were transferred by the Germans to camps north of the Brenner Pass. A small number (about 400 of the total of 4,000 Kiwis) escaped to the Allied Lines or to Switzerland, where they were interned or joined the Italian Resistance.

Lorraine’s display contained examples of the following:

- * Cachets applied in Cairo, Egypt, to mail notifying that the addressee was either a Prisoner of War or Missing in Action.
- * Mail to Prisoners of War using specially produced ‘airmail letter sheets’ sold by the New Zealand and U.K. Postal Authorities.
- * Mail from Prisoners of War in both Italian and German Camps to New Zealand.



Lorraine with a copy of Scott and Startup's book 'Treasured Letters' which deals with air letter cards from New Zealand Prisoners of War.



Howard John Holmes was taken prisoner in Crete in 1941 and remained a PoW in Germany until August 1945.

Lorraine identified her favourite soldier as **Howard John Holmes** (left), a tailor from Gisborne, who was usually known as ‘Slim’ Holmes because of his height. After enlisting in 1940, age 23, he saw much action in Greece as a private in the 19th Infantry Battalion, 2nd New Zealand Expeditionary Force (N.Z.E.F.). His unit was sent to Egypt in preparation to confront the Italians, who had invaded Egypt via Libya. After the Axis forces invaded the Balkans, the New Zealand Division and other Commonwealth forces were sent to Greece. Private Holmes was noted as an accomplished marksman.

After the defeat of the Allied Forces in Greece, they were withdrawn to Crete and prepared to hold the island from the imminent German invasion, which began on 20 May 1941. When Crete fell Private Holmes was taken prisoner on 1 June 1941 and remained a PoW until liberated on 1 August 1945, just two weeks before the end of the war.



A 1942 Christmas card from Howard John Holmes, a PoW in Germany, to his mother in Gisborne.

Lorraine showed a postcard for Xmas/New Year 1942/1943 sent by Howard to his mother in Gisborne (left). The card was printed by 'The Camp' and drawn by Kenneth V F Wood, a Canadian PoW.

While researching Howard Holmes on the Auckland Cenotaph database, she found an email address for his grandson, so contacted him and described what she had. From there a correspondence developed and she received several very good photos and learnt his story. His grandson, Hayden, is now serving in the New Zealand Army and was chosen as one of three to represent New Zealand in Crete for the 75th Anniversary of the battle in May 2016. Sadly his grandfather Howard died, aged 97, in 2014, just two years short of the Anniversary. Lorraine felt she couldn't keep the card, so photocopied it for herself and sent the original to Hayden in New Zealand, where he has had it framed and he intends to pass it onto his son in the future.

Some other soldiers of whom Lorraine spoke were:

- **James Bee** and **William Bee**, two brothers, both of whom were PoWs but in different camps in Italy.

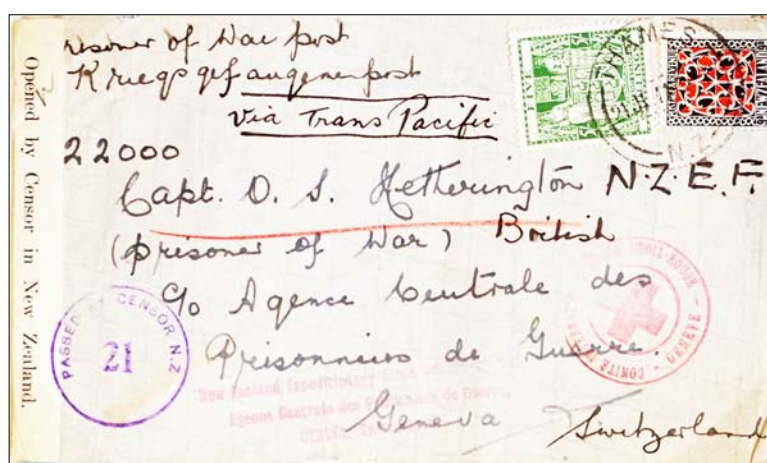
- **John Stuckey** was a PoW who broke out four times but was recaptured, spending 195 days in solitary confinement as a result. After the war he wrote a book about his escapes.

- **Hona Te Moananui a Kiwa John Palmer**, from the Ngati Towharetoa tribe, who was part of the famous 28th Maori Battalion. He was difficult to research as he spent his life using variations of these names.

- **Captain Owen Stanmore Hetherington**, 22000 was born in Thames on 3 April 1903 and became a medical practitioner in Papakura, Auckland. He embarked as Captain, Headquarters, 21 Auckland Battalion, 2nd N.Z.E.F., 2nd Echelon. He was a Medical Officer from January 1940 to May 1941. He was captured on 23 May 1941 during the evacuation of Crete, when he elected to remain with about 70 patients (including several Germans) and was thus eventually captured. He was repatriated in September 1944.



Captain Hetherington.



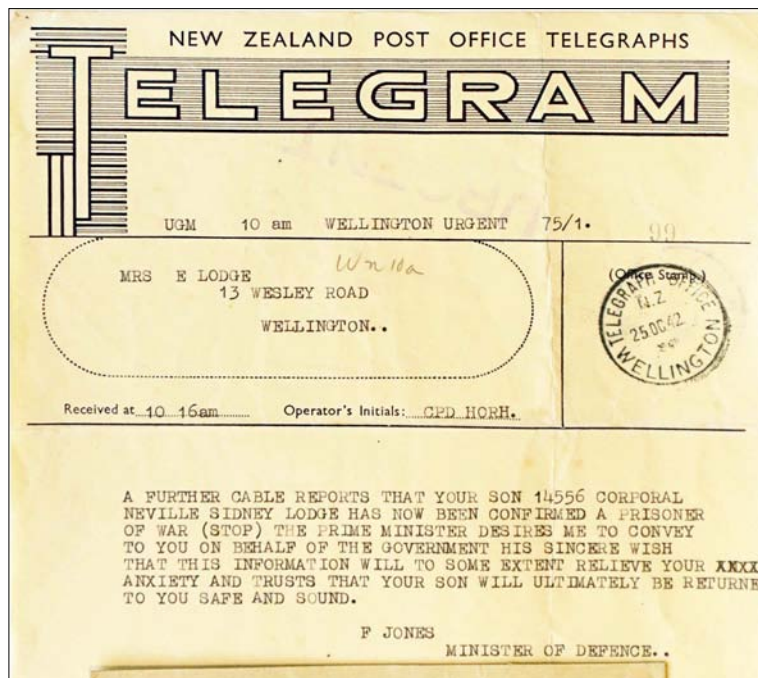
Letter sent to Captain Hetherington from his wife.
Sent to the Central Agency for PoWs in Geneva for forwarding.
There is an unusual cachet "NZE British Prisoner".

- **Francis Deryck Mullen** 1612 was an advertising agent from Auckland. He enlisted as a Military Gunner with 2nd N.Z.E.F., 3rd Echelon and was captured in Crete in 1941. When writing home he didn't like to follow the censorship rules. The letter sheet (right) was written by Mullen on 11 March 1944 and sent by airmail (40pf paid) to Auckland via North America from Stalag VIIIB, Lamsdorf, Silesia. Many lines in the letter have been deleted by the censor.

The German and the Italian Authorities, as well as the Allies, enforced strict rules governing mail exchanges for PoWs, agreed to internationally under the Geneva Convention. Letters from New Zealand to New Zealanders held in PoW camps in Italy and Germany were reciprocally delivered. Letters in each direction had to be censored by opening, examining and resealing, thus slowing down the process. The air



A PoW letter sheet from Francis Mullen with a stamp featuring Hitler.



"Your boy.....has now been confirmed a Prisoner of War"

letter cards were introduced in November 1941. During 1943-44, 30,000 cards were used, approximately one air letter card a week for each PoW. Their usage, post war, spread rapidly to the civilian postal system and, in 1953, they were renamed aerogrammes, proving very popular and lightweight for overseas mail.

Examples of Red Cross mail were shown where families were trying to trace family, also telegrams sent by the New Zealand Defence Minister when he had news of a relative's whereabouts. An example of a telegram informing the parents of Corporal Neville Lodge that he had been traced and was "confirmed a Prisoner of War" is shown here (left).

Mail was often returned to the sender when their whereabouts could not be

determined. Lorraine showed several good examples.

The postcard (right) was written on 18 January 1942 in Stalag VIIIB, Lamsdorf, Silesia, to Ngaruawahia. It was postmarked on arrival in New Zealand on 24 July, 27, then 6 August and redirected to Claudlands, a suburb of Hamilton. The card is stamped "GONE; NO ADDRESS" three times.

- **Lindsay Alfred Hyde** 3274 was a surveyor's cadet from Hamilton. He enlisted in the 18th Battalion, 2nd N.Z.E.F., 1st Echelon and was captured in Crete in 1941.



A further example of a redirected item was an air letter sent to Francis Sattler (right), undelivered and covered in multiple cachets.

The letter was written on 21 September 1944, endorsed as PoW mail and 'Return to Sender' via New Zealand Army Base Post Office in 1945. The air letter has been backstamped at several New Zealand Military Post Offices (M.P.O.s) as it was passed on. From August 1943 these offices had K.W. numbers up to KW14.

- **Francis Howard Sattler** 442870 was a Post & Telegraph employee from New Plymouth. He enlisted in 1944 as a Private, B Company, 25th Battalion Infantry Brigade, 2nd N.Z.E.F.

- **Neil Albert Thomas Haggland** 43807 was a civilian steel worker from Wellington. He enlisted in 1941 as a Private in the Infantry Brigade, 2nd N.Z.E.F.. He was captured on 3 September 1942 during the battle for El Alamein.

The air letter card (below) was sent by Private Haggland's sister from Wellington to Campo PG57 at Gruppignano near Udine, Italy. It was then Redirected by the Red Cross in Geneva to Stalag 344 and censored by the Stalag VIII B authorities in Lamsdorf, Silesia. The card refers to the 1st, 2nd and 3rd Echelons returning to New Zealand.



A much travelled air letter to Private Sattler.



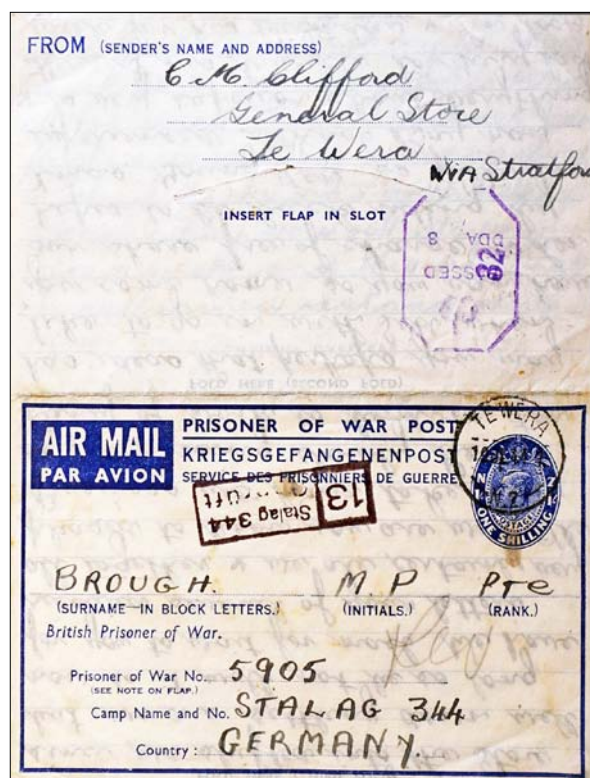
Air letter card to Private Haggland.

- **Maurice Patrick Brough** 4901 from Hawera enlisted as a Private on 29 September 1939. He was a PoW in Stalag 344, Lamsdorf. At the end of the war he returned to farming in Taihape. He was married in 1948, had four children and died at Taihape on 4 April 1995, age 77.

Lorraine discussed the fortunes of other soldiers that she had researched. These included:

- **Clive Anderson** who died while in a PoW camp in 1945 and **Clifford Green** who was killed in Action during the Battle for El Alamein.

The letter card (below) was sent, on 19 July 1945 from Te Wara, Taranaki, by a friend of Private Frances Brough. It has been censored in New Zealand (DDA8) and, on delivery, by the Stalag authorities.



Air letter card to Private Brough.

- **Frederick Wells**, who wrote about 'Uncle Sam' and his preparation for war. Obviously the censor didn't understand the reference and it escaped the censor marker.

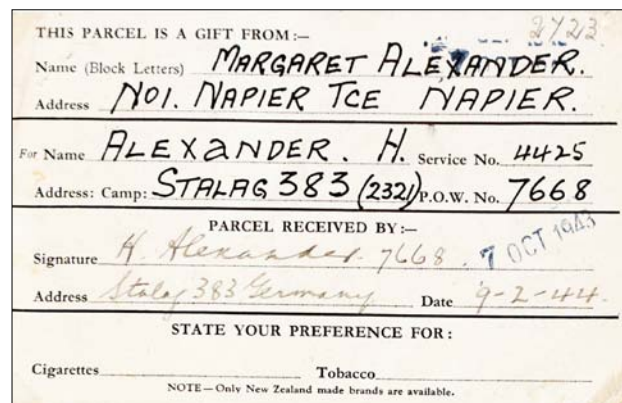
- **John Henry Dark** 8519 was a member of the Royal New Zealand Navy. He sent a Christmas postcard on 9 January 1942 from Stalag VIII B, Lamsdorf, Silesia, to wish a Merry Christmas to his wife in Wanganui. The card was drawn by Thomas Burke, a PoW in Stalag XXA, Thorn, Poland and printed by 'The Camp', a PoW newspaper.



A Christmas postcard (left and above) from John Henry Dark to his wife. The card was drawn by a fellow PoW and printed by the camp newspaper, 'The Camp'.

Amongst the other items of mail displayed were examples which indicated the important role the Red Cross played in connecting with PoWs. These included a cover sent from the 'Prisoners of War Enquiry Office' to the International Red Cross Committee, in Geneva.

The Red Cross were also involved in the supply of parcels to PoWs. Lorraine displayed a receipt card for a PoW parcel (below) sent via the Order of St John and New Zealand Red Cross, Parcel Centre No.2, to H Alexander by his sister Margaret to Stalag 383, Hohenfels, Bavaria. The parcel was received on 7 October 1943, and a receipt card sent on 9 February 1944 was received in New Zealand on 15 February 1944. The card was censored at Stalag 383.



Two sides of a receipt card for a PoW parcel sent from Stalag 383.

On the backs of sheets that Lorraine showed could be read the often cheerful, often sad contents, sometimes with little news at all, of the mail sent and received.

I am indebted to Lorraine Maguire for providing comprehensive notes of her display and to Susan Wilkinson for the illustrations used in this meeting report. Some images have been reduced to fit the space available. - Ed.

NOTES OF THE SCOTTISH GROUP MEETING, HELD ON 13 APRIL 2019.

Nine members attended an informal meeting of the Scottish Group in Perth, on Saturday 13 April 2019, during the 90th Annual Congress of the Association of Scottish Philatelic Societies (ASPS). This year, in addition to the ASPS Exhibition, the Congress incorporated the Association of British Philatelic Societies (ABPS) Northern National Exhibition, thus providing exhibitors with an opportunity to enter a United Kingdom national competition. New Zealand material was well represented.

David Stalker was awarded Gold, with a mark of 87, in the Northern National Exhibition (Traditional Class), for his 16 sheet entry, entitled 'New Zealand – A Study of the 1960-1967 Pictorial Definitives Counter Rolls'. In his entry, the roll manufacturing processes were described, with particular emphasis being placed on the wrapping papers. The exhibit showed examples of all counter rolls that were produced, including many variants, such as off-set numbers, upright numbers, double struck numbers, repaired joins, chalky paper to unsurfaced paper joins and Chambon perforations on coil joins. Shown was the only known example of the 3d coil with mixed chalky/unsurfaced papers and join number 3.



David Stalker with his one frame display of 1960-1967 Pictorial Definitive Counter Rolls.

David also entered a display, entitled 'New Zealand – 2009 Kiwi Stamp - No value Indicated', in the ASPS Exhibition, being awarded Small Silver Gilt in the General Class – Post-1900, with a mark of 77. The exhibit displayed the different formats in which the 2009 No Value Indicated Kiwi Stamps were printed and illustrated, perforation differences between the four formats and minor, but discernible, differences between each format, due to variations in cropping and scaling of the artwork by the different printers.



Alexander McCulloch, with his exhibit of New Zealand George V surface printed stamps.

Alexander McCulloch was awarded Vermeil, with a mark of 78, in the Northern National Exhibition (Traditional Class), for his four frame exhibit, entitled 'New Zealand George V Surface Printed Stamps'. This exhibit was also entered in the ASPS Exhibition (General Class – Post-1900), being awarded Large Silver Gilt, with a mark of 80. Alexander's exhibit included die proofs, plate proofs, plate blocks, misplaced perforations, booklet panes, official overprints and many of the catalogued colours.

Paul Woods attended the Congress from Newcastle and was awarded Gold, with Felicitations for Research, for his five frame exhibit on 'New Zealand Duty Stamps – The Early Years

1867-1879', in the Northern National Exhibition, with a mark of 86 and first place in the Revenue Class. His exhibit showed New Zealand Queen Victoria long type I Duty stamps used from 1 January 1867, including fiscal and later examples of postage usage. The display charted the design and printing of the stamps, the first imperforate and later perforated versions of the die 1 design, and die 2 perforated stamps. Different papers and watermarks, along with experimental separations, were covered. Special purpose stamps, including Ad Valorem, Penalty Paid, Fine Paid and Duty Paid in Full stamps, were shown. The escutcheon process for cancellation was described and illustrated, and crown circle and bank cancellations were shown. Fake stamps and cancellations were treated. Rare examples were shown of fiscal usage on complete documents and postal usage of these stamps.



Paul Woods, with his award winning exhibit of New Zealand Duty stamps.



Lachlan Philbey, winner of the Alba Salver; together with Mr Willie King, organiser of the Junior Competition.

George Henshilwood included some early issues from the Ross Dependency in his exhibit, entitled “A Taste of Antarctica ... A Contrast in Styles”, which was awarded Large Silver Gilt, with a mark of 81, in the ASPS Exhibition (General Class - Post-1900).

John Brown was awarded Bronze Silver for his exhibit on “New Zealand Farming” in the ASPS Exhibition (Thematic Class), with a mark of 66. This exhibit showed how farming was developed in New Zealand, initially with an emphasis on sheep, followed by diversification into other products.

Lachlan Philbey was awarded the Alba Salver for his 16 sheet Junior Competition entry, entitled “Scouts in New Zealand and Australia” (Figure 4). Lachlan’s display showed Scouting stamps and covers from New Zealand and Australia, especially covers for national Jamborees. It also included health stamps relating to Scouting from New Zealand.

NOTES OF THE NORTH OF ENGLAND GROUP MEETING, HELD ON 11 MAY 2019.

Peter Williams displayed a range of Marine Post Office markings followed by examples of Official stamps used on cover. Peter also had an example of the scarce 4d 1960 Pictorial stamp on chalky paper.

Mike Hanson had brought a study of the 1947 Health issue which were recess printed by Waterlow & Sons and featured the statue of Eros. Mike’s display included a range of blocks showing sheet markings together with the varieties found in this issue.

Stuart Potter began by showing a range of air mail letter cards and aerogrammes. These were followed by a selection of the various reprints made of the Chalon stamps and then a range of plate proofs from the George V issue including recess and surface printed values and booklets. There was a wide range of stamps showing shifts, flaws, double perforations, offsets and flaws on the 1d Dominion stamp. Stuart finished with a sheetlet of four Public Trust Office stamps.

Ian Merckel displayed a selection of the various printings of the 1d Universals, a range of Queen Victoria Sideface stamps, the halfpenny newspaper stamp and finished with stamps from the 1898 First Pictorial issue.

Paul Wreglesworth showed some of the postcards displayed at the London meeting in March when the subject was postcards. These included Book Post cards, cards featuring railway accidents and one of the earliest picture postcards, posted to Australia in January 1899. This was followed by a selection of stamps from the 1970 Pictorial definitive issue, including colour shifts, missing colours, colour offsets and paper overlaps.

Jack Lindley concluded the meeting with publicity photographs for some of the 1970 stamps. Jack then displayed a study of the publicity photos of stamps and a study of the 3d stamp from the 1946 Peace issue. Examples of crash mail were shown and a range of material related to the inventor Richard Pearse who, many people believe, was the first person to fly.

FOLLOW UP TO PREVIOUS ARTICLES

CAPTAIN SCOTT AND HIS MOTORISED SLEDGES

At the March meeting of the Society in London Margaret Frankcom displayed two postcards of motorised sledges used by Captain Scott on his fateful expedition to the South Pole in 1912. One of these cards was reproduced in the May issue of *The Kiwi* (p 81). It is shown here again (bottom card).

Margaret Frankcom writes to say that the report of the March meeting of the Society was a little misleading when describing Scott's ill-fated motor sledges, made by Mr CR Jones of the Mount Cook Motor Company. Scott seems to have invested time, faith and money in the machines which were experimental and untried in the polar conditions and spares were in short supply. One machine fell through the ice as it was being unloaded on 8 January, and could not be recovered.

At first the remaining machines did well in ferrying supplies from the *Terra Nova* to the initial hut site but they were soon overheating and in constant need of repair by the engineer Bernard Day. They finally broke down early in the Polar March. The second sledge after a few days and the final one suffered a similar fate the next day, well before reaching One Ton Camp. Scott recognised that "the dream of great help from the machines is at an end!" In the end they "did no more than predict a time when sophisticated and powerful machines might drive across Antarctica".

Margaret recommends the book *Scott's Men* by David Thompson. Published in 1977 (ISBN 01713910348). It has numerous quotes from journals and diaries and members may find it of interest.



One of the Mount Cook Motor Co.'s sledges (above) and Scott with his modified sledges (below).



INSUFFICIENTLY STAMPED POSTCARD

At the March meeting of the Society, in London, a scan of an interesting postcard was displayed (right), and reproduced in the May issue of *The Kiwi* (page 80). The scan had been sent by Northern Ireland member Johnny Barkley with the question as to why it had been endorsed “Insufficiently Stamped”.

Robin Gwynn responded:

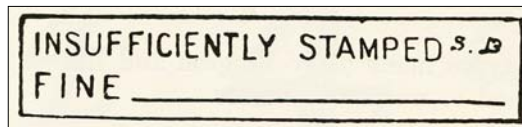
“The postcard is inscribed only NEW ZEALAND. Did the Nelson P.O. deem the 1d could only be for internal postage? Especially since new cards had appeared in June 1890 inscribed INLAND AND AUSTRALIAN POSTCARD? That would have made it INSUFFICIENTLY STAMPED, but a nasty move!”



An 1890 postcard to Ireland, prepaid 6d.

*Why was it endorsed
“Insufficiently Stamped”?*

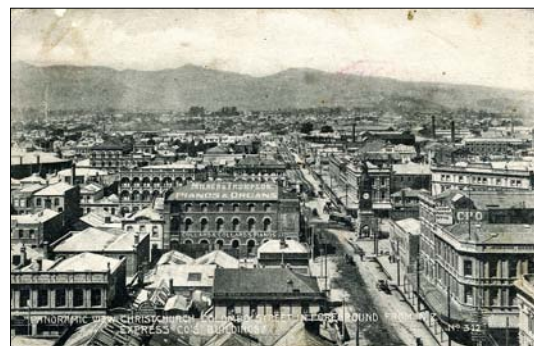
The Postage Stamps of New Zealand, Vol. 3, shows the boxed marking (p476) which has been applied. There is a second line, missing from the card, which should read ‘Fine’ (see below).



The sender recognised that the card was not valid for overseas usage but, perhaps not unreasonably, felt that the addition of 5d in postage stamps would be sufficient to uprate the card to the correct rate to the UK of 6d. As Robin Gwynn has suggested the clerk in the Nelson post office not only regarded the card inadmissible for overseas use but that the 1d imprinted stamp was also not permitted. The consequence was not only the postage was 1d short but a 6d fine was imposed giving a total of 7d to pay! As Robin Gwynn says “a nasty move!”.

Whether the 7d was ever demanded or paid, on arrival in Belfast, is not known.

W. STRANGE & Co., CHRISTCHURCH - EARLY JUNK MAIL?



I am grateful to two members who responded to the item in the May issue (p86) on the card above which has, on one side, a panorama of Christchurch and on the other an advert for Strange & Co., Christchurch.

Jack Lindley has a card with the same picture and advert with an equally indistinct postmark.

Colin Capill writes to say he has a similar card with similar postmark but dated 1 August - year not showing. The picture side on Colin’s card is of the Christchurch Square with Cathedral. Colin adds “Under the Postage in Cash system circulars (presumably also postcards) could be simply addressed “The Householder”. If 1,000 or more were (at that time) sent then the postage could be paid in cash; as happened here”.

PW

JOHN BULLEID & Co., OAMARU

- A FURTHER EXAMPLE OF EARLY JUNK MAIL

Jack Lindley

I was interested to see the postcard from Strange & Co., Christchurch addressed to "The Householder, Christchurch", advertising their sale, illustrated in the May issue of *The Kiwi* (page 86). I also have an example of this card and, like the one shown by Paul Wreglesworth, the date is unclear.

I have a similar item, shown below, which might also be classified as 'junk mail' as there is only a printed advert and no personal message. The picture side is of the haberdashery and hosiery department of John Bulleid & Co., of Oamaru. The address side carries a further advert.

The card, addressed to a local resident, has an Oamaru 'Paid' roller cancel dated 31 MY 1910.



The two sides of the post paid advertising card from John Bulleid & Co., Oamaru.

A FAREWELL TO HEALTH STAMPS

- PART SIX

John Watts

1999 was the 70th Anniversary of Health Stamps and the three different stamps making up the issue focused on Children's books written by New Zealand authors and their contribution to education, health and wellbeing of children. The stamp designs were by Ann Adams of Wellington.



Figure 1: The 1999 gummed sheet stamps.

The gummed stamps (Figure 1) were printed in sheets of 50 (5x10) with vertical mesh, perforated 14, by Southern Colour Print, Dunedin.

The 40c+5c value features a character from the book *Lion in the Meadow* by Margaret Mahy, illustrated by Jenny Williams and the detail was reproduced by permission of the publisher Orion Children's Books. The higher value, 80c+5c, features a character from the book *Greedy Cat* by Joy Cowley which has illustrations by Robin Bolton, the detail was reproduced by permission of the publisher Learning Media Limited.

A further 40c+5c value was issued featuring *Hairy Maclary* from the book *Hairy Maclary's Bone*, written and illustrated by Lynley Dodd, the details reproduced by permission of the publishers Mallinson Rendel.



Figure 2: Strips from the 1999 self-adhesive stamp rolls showing 'Health Camp Board' and 'Only 25 Stamps Left' labels.

[images reduced]

This stamp was printed in the self adhesive form from three plates each containing two panes for both the stamps and labels. The perforations were die-cut, gauging 10½x10, with the stamps in landscape format on the jumbo rolls and were sold in dispenser boxes of 100 stamps which had the usual '5 and 25 stamps left' information labels. There were also four labels, printed by Sprintpak - SNP, Australia, publicising the Health Camps Board. The paper had a vertical mesh (Figure 2).

The miniature sheet (Figure 3) contained a se-tenant strip of three stamps including the 40c 'Hairy Maclary' stamp, now in gummed form rather than self-adhesive. All stamps were printed on paper with vertical mesh and perforations gauging 14.



Figure 3: The 1999 miniature sheet contained the three stamps on gummed paper.

An unadopted miniature sheet containing three unadopted stamp designs mounted on a first day cover (f.d.c.) that was also unadopted is shown below (Figure 4). It has not been possible to identify the designer.



Figure 4:

A first day cover and stamps all with designs not used for the 1999 Health stamp issue.

The artist, or artists, are unknown.

[image reduced]

Ten f.d.c.s, individually numbered, were signed by the three authors of the books (Figure 5) in which the stamp characters were featured and offered to members of the New Zealand Stamp Dealers Association (NZSDA) for sale by tender.

Figure 5:

A first day cover signed by the three respective authors.

Ten were produced and sold, by private tender, by members of the NZSDA.

[image reduced]



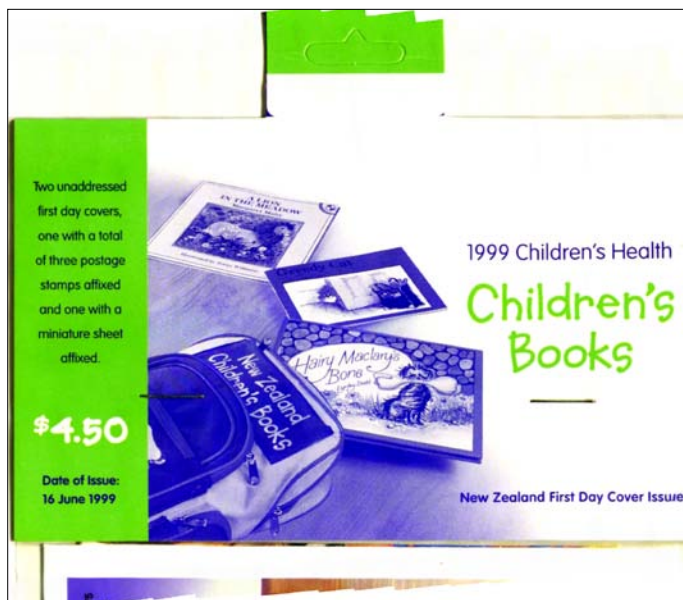


Figure 6: *The Hang-Sell pack for the 1999 issue contained a free pouch for stamps.*

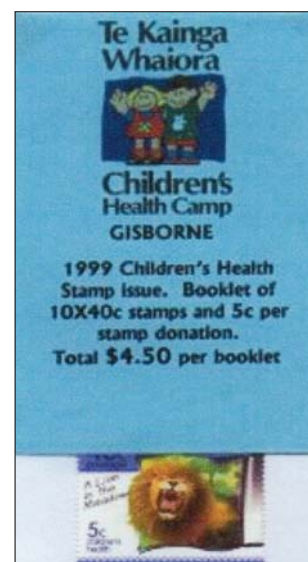


Figure 7: *Gisborne Health Camp booklet.*

[images reduced]

As an extra bonus the purchase of ten or more stamps qualified for a free pouch, which was seen as an alternative to a ten stamp booklet. One of these pouches was contained, together with two f.d.c.s, in a \$4.50 Hang-Sell pack (Figure 6).

The Gisborne Lions Club again provided financial assistance to the Health Camp in 1999 to produce a quality booklet containing ten 40c+5c gummed stamps (Figure 7).

New Zealand Post made a radical change for the 2000 issue combining them with a larger set of stamps featuring bears and dolls. The stamp designs were the work of the New Zealand Post and Business unit who produced six different stamp designs (Figure 8), two of them were Health Stamps which carried a 5c surcharge.



Figure 8: *Pre-design artwork for a sheetlet which included the 2000 Health stamps.*

There were a number of benefits with this new policy:

1. Production cost savings in combining two stamp issues.
2. With the chosen subject the sale of Health Stamps from this issue could increase because of the attraction to thematic collectors of stamps featuring dolls or bears.
3. A new audience could be attracted to New Zealand stamps. Many children collect dolls or bears when young, an interest often extended into adulthood where they are classified as actophiles (collectors of bears) or plangonologists (collectors of dolls).

All of the stamps were issued in sheets of 50 (10 rows of 5 stamps), printed by Southern Colour Print, Dunedin on horizontal mesh paper with perforations gauging 14½.

The sheetlets (Figure 9) were printed as two panes on one large sheet, each pane containing 12 sheetlets in three rows of four, 24 sheetlets per printed sheet.



Figure 9: The 2000 Issue sheetlet.

The miniature sheets (Figure 10), containing the 40c+5c values were printed as 24 single panes in four rows of six on one large sheet. It will be noted that the basic design is a repeat of the four stamps on the left side of the sheetlet with the addition of a small girl to the left of the toys and the appropriate printed detail added. Another cost saving feature.

Some Health Stamp collectors might have complained that, to obtain a pair of the se-tenant gummed stamps, they would need to purchase the six stamp sheetlet, or remove a pair from a miniature sheet.



Figure 10: The 2000 Issue miniature sheet.



Figure 11: The 2000 Issue self-adhesive roll box.

[image reduced]

The self-adhesive 40c+5c stamp of this issue was a reduced design size of the 40c+5c gummed stamp, sold in the boxed rolls of 100 stamps (Figure 11) and produced in a jumbo roll for the production of First Day Covers, both forms having die cut perforations gauging 11½x11 and horizontal mesh paper, printed by Sprintpak - SNP, Australia.



Figure 12: Strip from the 2000 self-adhesive boxed roll showing coil join. The die-cut impression, where a label would normally have been, can just be seen to the right of the join (arrowed).

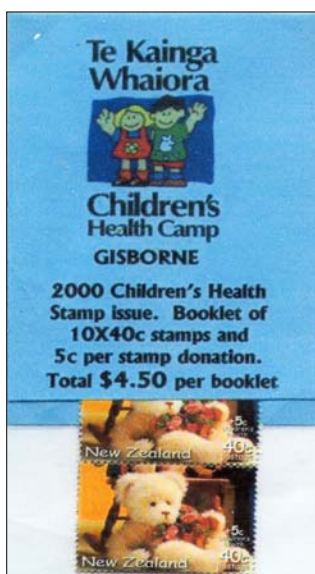


Figure 13:
2000 Gisborne booklet.
[image reduced]

There were differences in the manufacturing process for the boxed rolls which, for the first time, had no '5 stamps left' and '25 stamps left' labels. To the right of some of the coil joins, there is a die-cut impression in the shape of a large 'right square bracket' (Figure 12) which is where a label would normally have been. It is likely that one printing and production process was used for both the Jumbo rolls (used to prepare f.d.c.s) and the 100 stamp rolls for dispensing boxes. The end stamp in the roll (last stamp to the left) also shows this feature and, together with the joining tape proves the boxed roll was produced from a larger roll.

Again the Gisborne Lions Club assisted the local Health Camp financially to boost the sale of the Health stamps by producing booklets containing ten 40c+5c gummed stamps (Figure 13).

Some 'unofficial' booklets have recently appeared on the market, containing ten 40c+5c gummed stamps in a simple cover which consists of a black and white copy of part of a sheet of the stamps (Figure 14).

As of this time it has not been possible to establish the source of these booklets.



Figure 14: An unofficial booklet containing the 2000 teddy bear stamp with a simple black and white copy for the cover.

For 2001 New Zealand Post returned to the theme of promoting exercise, this time cycling, with the higher value stamp picking up the increase in postal rates to 90c (Figure 15).



Figure 15: *The 2001 gummed stamps.*
40c+5c: Family Time, 90c+5c: Catching Air.

There were three different stamps, two gummed and one self-adhesive, for 2001. All were designed by Comm Arts Design of Wellington, from photographic images. The printing of all three was by Southern Colour Print, Dunedin.

The two gummed 40c+5c and 90c+5c stamps were also printed in large sheets of 50 (10 rows of 5 stamps) on vertical mesh paper and perforated 14. In addition the 40c+5c gummed stamp was issued in smaller sheetlets of ten (5 rows of 2) (Figure 16).

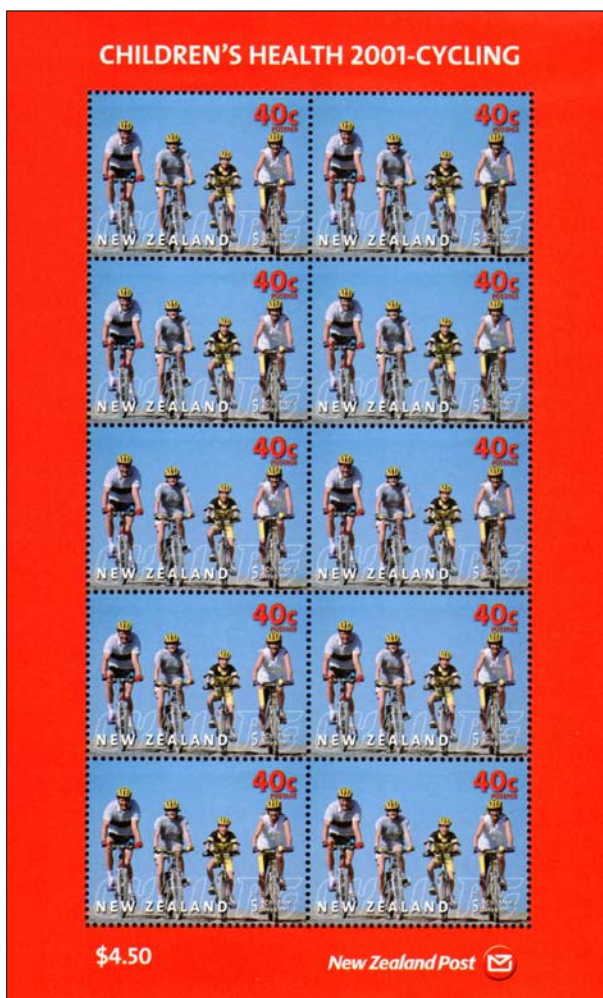


Figure 16: *The 40c+5c stamp sheetlet.*
[image reduced]

New Zealand Post continued to encourage artists to think ‘outside the square’ when submitting their designs and the miniature sheet (Figure 17) reinforced the cycling theme with the two gummed stamps placed, as a se-tenant pair, within the wheel of a cycle. The stamps were perforated 14.

Marketing, once again, accepted that the public like to purchase stamps in tens, but there was no free pouch this year!



Figure 17: *The 2001 circular miniature sheet.*
[image reduced]

The 40c+5c stamp for the dispenser boxes featured a young boy on a mountain bike, (Figure 18) and was the first of the self-adhesive stamps to be printed by Southern Colour Print, Dunedin. They were packaged in the normal boxes of 100 stamps with the '5 stamps left' and '25 stamps left' labels making a return. Perforations were die cut, gauging 10x9¾, and were printed on horizontal mesh paper. The single stamps sold from the Jumbo rolls had, printed on the backing paper, a vertical bar over 'SCP' in black.

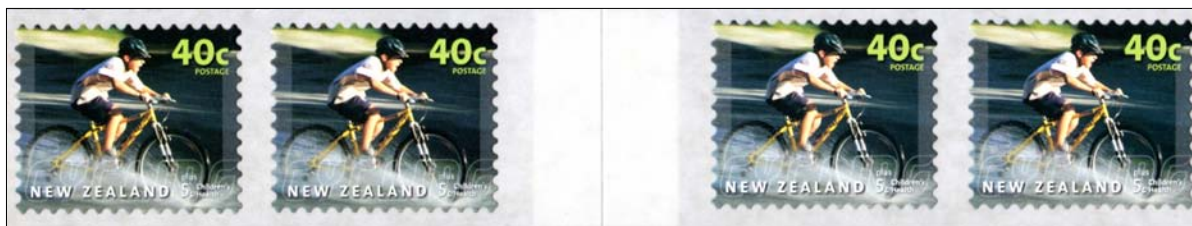


Figure 18: A strip of the 2001 self-adhesive stamp, 'Out Riding', printed by Southern Colour Print.

The Gisborne Health Camp did not issue a booklet in 2001.

Acknowledgments:

I am grateful to John Biddlecombe who has provided a number of the images used in this article.

Figure 4 is reproduced from *The Postage Stamps of New Zealand, Volume 10*, page 264.

Figure 8 is reproduced with the permission of The New Zealand Archives, Te Papa.

NEW ZEALAND

**Ask for your free
Postal Auction catalogue!**

Specialised, simplified, postal history, Chalons,
revenues, errors, all manner of NZ material,
as well as worldwide!

Email ashford@stampsale.com (or mail/phone/fax)







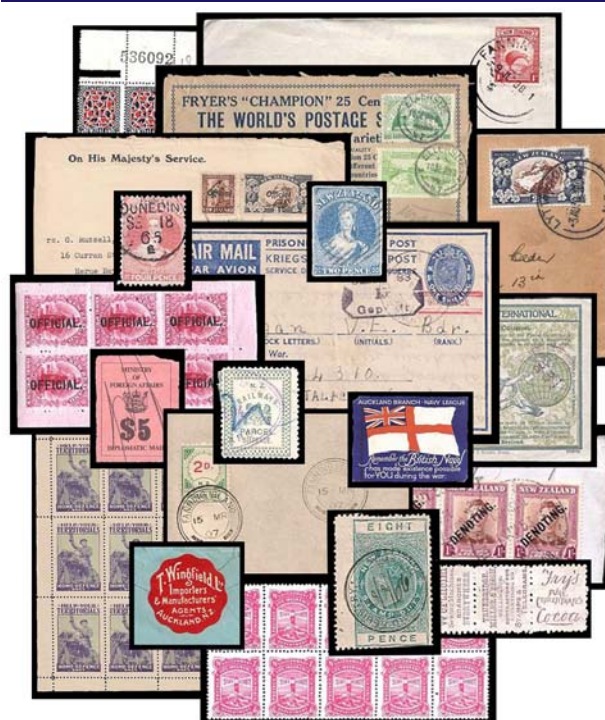
Ashford Stamps Ltd

P.O. Box 9845, Newmarket, Auckland 1149, New Zealand.
Email ashford@stampsale.com
Fax +64 9 520 5947 Telephone +64 9 520 5946
Managing Director: Brian Rumsey, member NZSDA, APS

STEVEN ZIRINSKY

MEMBER PTS, APS, NZSDA, APTA, PPS

NEW ZEALAND



PO BOX 230049, Ansonia Station, New York, NY 10023 USA
szirinsky@cs.com

www.zirinskystamps.com
[@ZirinskyStamps](https://twitter.com/ZirinskyStamps)

1934 HEALTH FIRST DAY

- GROUNDHOG DAY

Peter Favier

In 1934 the New Zealand Post Office failed to ensure that all post offices had that year's Health stamp available for the first day of issue, Thursday 25 October. In fact some did not receive and issue them until Wednesday 31 October. This created a 'Groundhog Day' effect lasting for a week, whereby the 'First Day' kept on repeating. TC Thackery covers the subject in his book *New Zealand First Day & Early Use Covers and Stamps 1855 - 2003* (Ref. 1).

This article poses two questions for readers. It is undisputed that Wellington issued the stamp on 25 October, and as Thackery says it is very scarce on first day cover (f.d.c.) with that date, and is one of the most underrated f.d.c.s. An example is shown below (Figure 1).

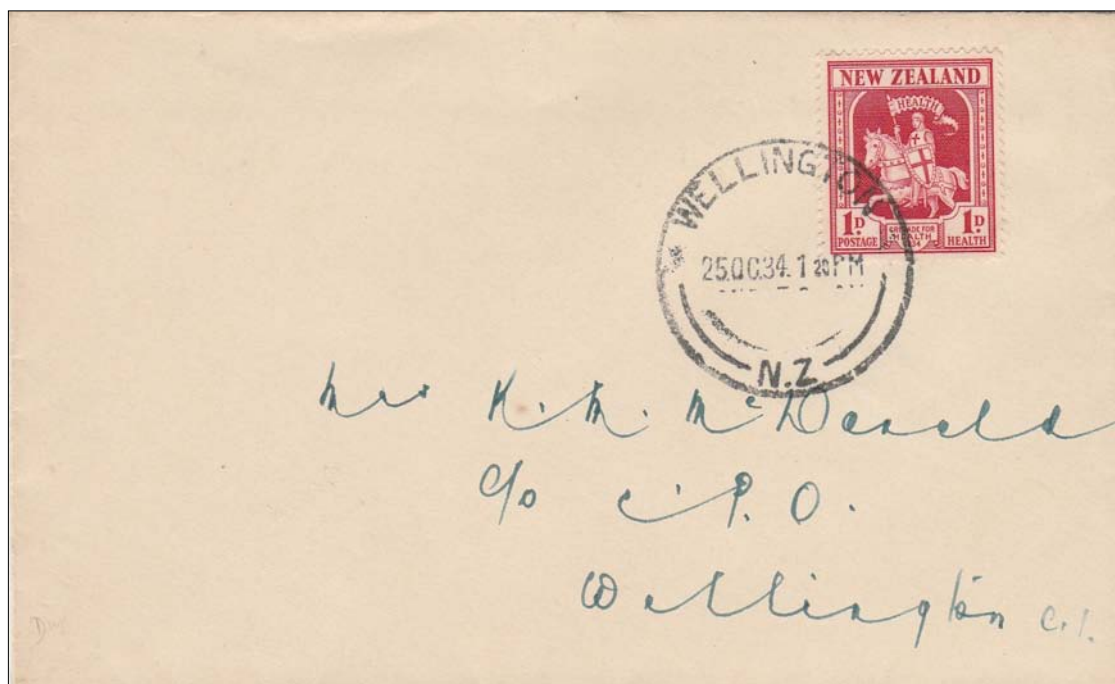


Figure 1: Wellington first day cover postmarked 25 October 1934.



Figure 2: Tauranga first day cover postmarked 25 October 1934.

[image reduced to 75%]

Thackery queries how only Tauranga, in the Bay of Plenty, was the only post office besides Wellington to issue a f.d.c. on that day. He says that he is not convinced that Tauranga covers dated 25 October are genuine. One example is shown here (Figure 2) and another was discussed by Tom Latta in *The Kiwi* in 1981 (Ref. 2) What is the latest thinking on this?

Does anyone know the dates individual post offices issued the Health Stamp that year?

f.d.c.s from other post offices, with different postmark dates, are shown here (Figures 3 - 8).

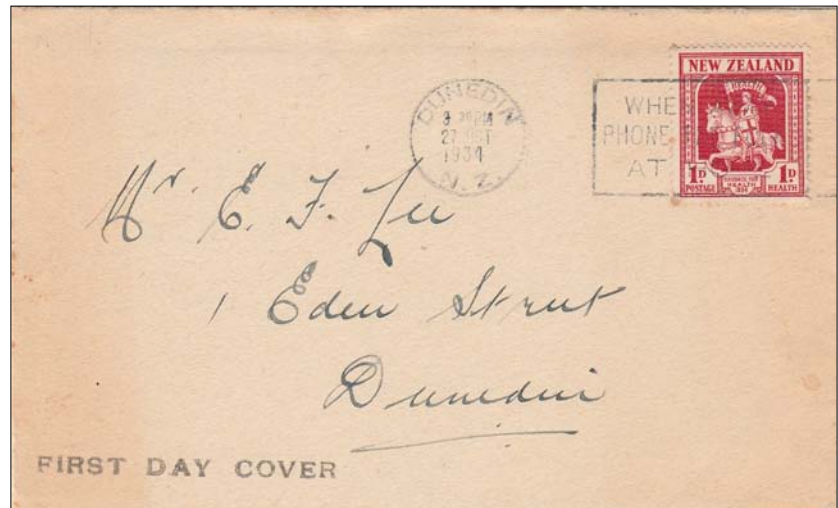


Figure 3: Dunedin local cover posted 27 October 1934.

[image reduced to 75%]



Figure 4: Hinuera local post to Matamata 29 October 1934.

[image reduced to 75%]

A similar item, tied by a Hinuera c.d.s. for 29 October, was offered as lot 2311 in Auckland City Stamps Auction 199, 24 September 2013.

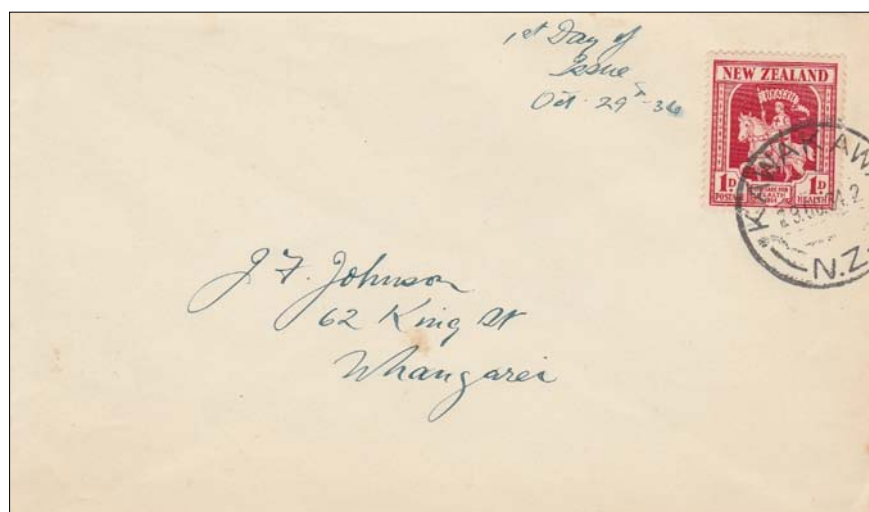


Figure 5: Cover posted from Kawakawa to Whangarei, 29 October 1934.

[image reduced to 75%]

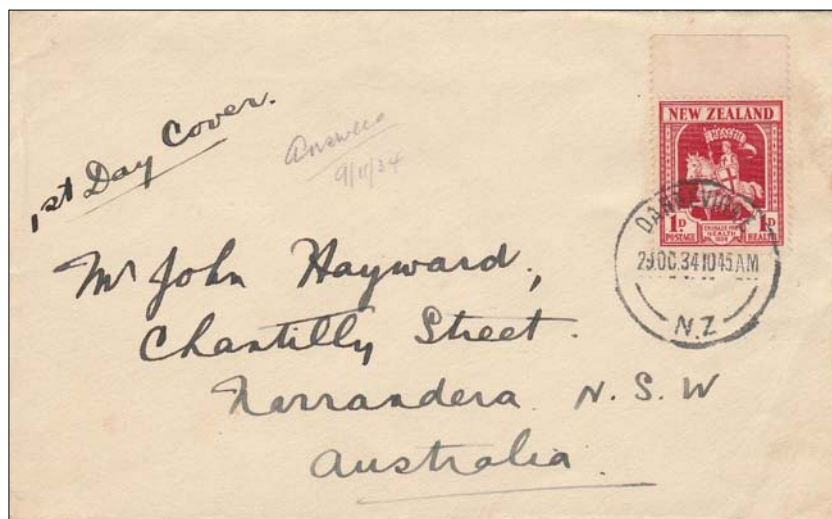


Figure 6: (left)
'1st Day Cover' from Dannevirke to Australia dated 29 October 1934.

[image reduced to 75%]

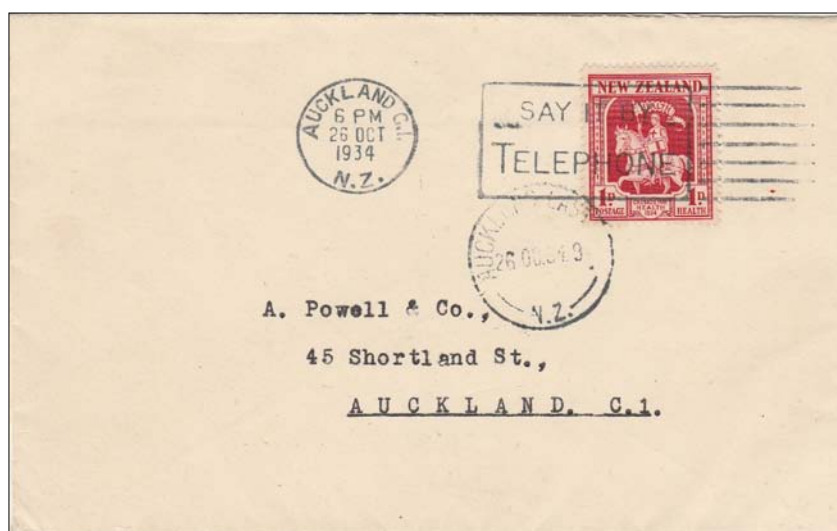


Figure 7: (above)
Auckland local letter postmarked 26 October 1934.

[image reduced to 75%]

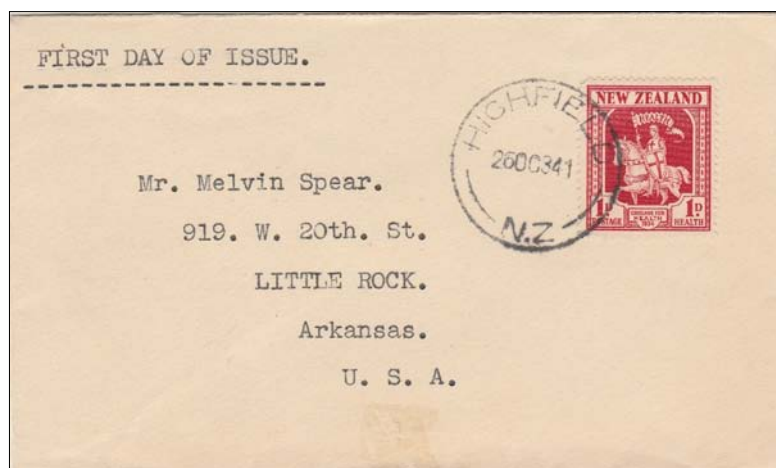


Figure 8: (right)
'First Day of Issue' cover from Highfield to the USA dated 26 October 1934.

[image reduced to 75%]

Does anyone have any further examples of covers, claiming to be 'First Day' from other towns or postmarked on alternative dates to those shown here?

References:

1. Thackery TC, *New Zealand First Day & Early Use Covers and Stamps 1855-2003*, p.154-155, pub. The Royal Philatelic Society of New Zealand, Wellington, 2004.
2. Latto T, '25th or 26th October, 1934', *The Kiwi*, Vol.30 No.3, p.43, May 1981.

Postscript:

The Peter Favier Healths Collection is being sold at auction. See advert on page 136.

The Peter Favier Collection of New Zealand Health Covers

This will be sold by Postal Auction by well known New Zealand specialist J M A Gregson.

The collection builds and expands upon the extensive work of the late Tom Latta into early Health issues with covers from unusual Health Camps such as Raukawa, Riverton, Campbell's Bay etc. There are detailed collections of most years and all years are represented with 1929, 1930, 1931 (2), the 1933 illustrated cover is an example unlisted in the Stephen Jones 2008 handbook. There are rare 1934 FDC with Auckland, Dannevirke, Dunedin, Highfield, Hinuera, Kawakawa, Tauranga, Wellington (2) covers. The rare 1932 label is represented by a block of four, the Waikato labels by a full sheet of 7. Later years are strongly represented by a wide range of different designs, many of them rated very highly or unlisted in the Jones handbook.

There are over 700 lots with estimates between £1 and £1750

Lot 14

Lot 21

Lot 23

Lot 26

Lot 35

Lot 37

The catalogue will be available from late-June and the sale will close on 1st September 2019.

Catalogues cost £3 (or £5 from overseas), payment either by cheque to J M A Gregson or overseas buyers may send mint UK postage stamps or pay by bank transfer. An email version of this catalogue is free.

Lot 136

J M A GREGSON
18 WILLOUGHBY CLOSE
ALVESTON
BRISTOL BS35 3RW
Tel: 01454-411652
Email: jos@josgregson.plus.com

Lot 445

The collection builds and expands upon the extensive work of the late Tom Latta into early Health issues with covers from unusual Health Camps such as Raukawa, Riverton, Campbell's Bay etc. There are detailed collections of most years and all years are represented with 1929, 1930, 1931 (2), the 1933 illustrated cover is an example unlisted in the Stephen Jones 2008 handbook. There are rare 1934 FDC with Auckland, Dannevirke, Dunedin, Highfield, Hinuera, Kawakawa, Tauranga, Wellington (2) covers. The rare 1932 label is represented by a block of four, the Waikato labels by a full sheet of 7. Later years are strongly represented by a wide range of different designs, many of them rated very highly or unlisted in the Jones handbook.

Alex. Fullerton
 Borough Engineer
 Timaru
 First Day Cover




To J. Reid
Up for journey.
Love Clark
at the station

Fourteen
Fourteen

Mr. G. Kitchin
680 George St
Dunedin

1893
N.Z.

The image displays four identical 1932 postage stamps arranged in a 2x2 grid. Each stamp features a stylized sun with rays rising over a mountain range. The sun is depicted with a face and a crown. The text '1932' is in the top right corner, and 'PENNY FOR HEALTH CAM' is at the bottom. The stamps are perforated on all sides.

Ms. A.9.2.6 v.10, p.7
 1877

Catalogues cost £3 (or £5 from overseas), payment either by cheque to J M A Gregson or overseas buyers may send mint UK postage stamps or pay by bank transfer. An email version of this catalogue is free.



J M A GREGSON
18 WILLOUGHBY CLOSE
ALVESTON
BRISTOL BS35 3RW
Tel: 01454-411652
Email: jos@josgregson.plus.com



July 2019

1934 HEALTH: FIRST DAY OF ISSUE

Robert Clark

It was standard practice for the postal authorities in Wellington to arrange for new stamp issues to be sent out to post offices along with instructions about the first day of issue. In that way, they were on sale at the same time in all parts of the country. For example, for the 1932 Health issue, newspapers in different parts of the country all reported in advance that the stamps would be available at principal post offices on 18 November and: “be available at the other offices as soon as sufficient supplies are available”. For the 1933 issue, the date of the first day of issue of 8 November was announced on 5 November and there was, for example, sufficient time for the ‘Kiwi Exchange Club’ to produce a special first day cover on which the date was printed (Ref. 1). However, there seems to have been no central coordination with the 1934 Health “Crusader” issue.

According to the *Postage Stamps of New Zealand* (Ref. 2), the 1934 health stamps: “... were placed on sale at the Chief Post Office, Wellington, on October 25, 1934, and at most other offices on the following day ...”. In 1981, Tom Latto published an article (Ref. 3) showing a 1934 Health stamp postmarked in Tauranga on 25 of October and this led Campbell Paterson to change their catalogue listing for first day covers to “Wellington or Tauranga” on 25 October and “most other offices” on 26 October 1934 (Ref. 4).

I thought that it would be of interest to look at *Papers Past* (Ref. 5) to see what contemporary newspapers had to say on this topic. The *New Zealand Herald* for Monday 29 October stated that: “Supplies of the 1934-35 health stamp reached Auckland on Friday, and were immediately placed on sale at the principal post offices in the city.” That fits with the first day of issue in Auckland being the 26th. The regional daily paper for Tauranga is the *Bay of Plenty Times* which reported on Saturday 27 October that: “The 1934-35 ‘Health’ stamp ... is being placed on sale at post offices immediately ...” which indicates it was on sale in Tauranga for the first time on either 26 or 27 October. It would therefore appear that the Tauranga 25th October cancellation was a mistake, deliberate or otherwise, by a postal clerk.

The *Press* of Christchurch on Monday 29 October stated that the stamp: “will be on sale in Christchurch today” while the *Otago Daily Times* of Dunedin for Saturday 27 October stated that: “From Monday next this year’s issue of health stamps will be on sale at all post offices.” Hence the first day of issue in parts of the South Island was not until 29 October. The 1934 Health stamps may have been sent to the South Island on the overnight ferry on 25th – 26th October and it seems from the newspaper reports that the postal authorities deemed it best to take time for the stamps to be distributed to all post offices so that there would be a coordinated issue on Monday 29 October. However, covers postmarked in Dunedin on 27 October and Highfield on 26 October shown in the article by P. Favier (Ref. 6) indicate that some post offices issued them before that date.

That then leaves the question of why there were different dates of issue in different parts of the country. Previous health issues were printed locally, while the 1934 issue was printed by De La Rue in London and it appears that the postal authorities in Wellington wanted to get them out to the public as soon as possible after their arrival in New Zealand. The rush seems strange as the 1932 and 1933 health issues had not been issued until November. It would have made a lot more sense to stick to standard practice and distribute the stamps to all parts of the country and delay the first day of issue to 29 October.

References:

1. Watts J, ‘A Farewell to Health Stamps’, *The Kiwi*, Vol. 67 No. 1, pp 24-30, January 2018.
2. Collins RJG and Fathers HTM, *The Postage Stamps of New Zealand*, pub. The Philatelic Society of New Zealand, Wellington, 1938.
3. Latto T, ‘25th or 26th October, 1934’, *The Kiwi*, Vol.30 No.3, p.43, May 1981.
4. *Campbell Paterson’s Specialised Catalogue of New Zealand Stamps*.
5. *Papers Past* website, <https://paperspast.natlib.govt.nz>
6. Favier P, ‘1934 Health First Day, Groundhog Day’, *The Kiwi*, Vol.68 No.4, pp.137-139, July 2019.

CUSTOMISED ADVERTISING LABELS (CALs) - THE 2018 PACK

Alan Tunncliffe

Released early this year, the 2018 CALs Pack is the smallest for some years, containing only 34 labels for a total cost price of \$37.20. This is due to there being no booklets issued.

As has been the case for several years now, the labels are printed in se-tenant sheets, with one sheet of 20 gummed labels and one sheet of 14 self-adhesive labels. The gummed sheet contains four rows of five labels and the self-adhesive sheet has two rows of five and one row of four labels. Within each sheet, the labels are arranged in chronological order of when they were originally printed for the customers who ordered them.

As for the 20 gummed labels, ten are in vertical and ten in horizontal format. Nine have a face value of \$1 and 11 have \$1.20. 18 of the 20 labels have red value panels and only two have white panels (these are termed “inverted” by New Zealand Post). The 14 self-adhesive labels all have red value panels, one dozen in horizontal and only two vertical format. Nine labels have a face value of \$1 and five are denominated \$1.20, reflecting the 20c increase in the standard postage rate on 1 July 2018.

I will not list all of the 34 labels. A checklist can be found in the March 2019 Campbell Paterson Newsletter (Ref. 1). Following are comments on those labels where I can provide interesting background details of the design and purpose of issue.

Two designs printed in February, came in both gummed and self-adhesive versions, meaning that of the 34 labels, there are 32 different designs. These were released to celebrate the 90th Anniversary of Timaru Philatelic Society, which took place on Saturday 24 February with a stamp fair, followed by an evening banquet. One of the two designs depicts a lighthouse, no longer in use but which still stands on the shore of this coastal city. The other design shows a little blue penguin, a colony of which is nearby.



Figure 1: Two designs, issued in gummed and self-adhesive form, for Timaru Philatelic Society's 90th Anniversary.

The four labels (Figure 1) were used on several maxicards and first day covers, datestamped on 24 February with a special pictorial postmark featuring the penguin in a different pose to that on the label. This datestamp has the text “Timaru Philatelic Society Founded in 1928” around the top and around the bottom “Timaru, NZ-24 Feb 2018”. An alternative pictorial datestamp was originally proposed with text reading “Timaru Philatelic Society - Now 90 Years Young”.

There were four different bird labels (Figure 2), two \$1 issued in February and two \$1.20 in July, featuring bird photographs by Paula Wilkinson of Christchurch. Also a keen philatelist she has been issuing bird CALs for several years and was also responsible for the Pioneer Basketball Club labels released in earlier years.



Figure 2: Four CALs based on photographs by keen philatelist Paula Wilkinson of Christchurch.

In March the organisers of the Armistice Stamp Show ordered two different self-adhesive \$1 labels, featuring aircraft, to be printed (Figure 3). They were first used on f.d.c.s and maxicards on 21 April. The CAL with the blue design depicts a British Sopwith Camel aircraft, which is the type flown by Royal Flying Corp (RFC) member, Canadian Arthur Royal Brown, credited with being the pilot who shot down the famous Red Baron, Manfred von Richthofen in April 1918. The other label, which has a brown design, shows the red Fokker triplane flown by the Red Baron.



Figure 3: *A Sopwith Camel and the Red Baron's Fokker triplane featured on two stamps produced for the Armistice Stamp Show.*

The second CAL issued for a Flight to the Lights, used on f.d.c.s on 22 March, was fully described in Tony Ward's article in the July 2018 issue of *The Kiwi*.

Dave Butcher of the Kiwi Stamp Circuit in Auckland has been commissioning CALs since 2007 when he released one for the centenary of the 1d Dominion stamp. In 2018, for the 11th time, he issued a label featuring a stylised kiwi to celebrate a sports event, the Commonwealth Games held in Queensland. Dave and his wife Jan recently retired from managing the stamp circuit business and sold it to another dealer. The 2018 CAL was printed in March and first used on a f.d.c. postmarked on 6 April with the Auckland MSC philatelic pictorial datestamp. The DLE size envelope has a coloured cachet in yellow and green based on the CAL. Dave also issued a cover with a cachet stating "Posted on the Last Day of \$1 Standard Letter Rate 30 June 2018" and as this was a Saturday the philatelic datestamp could not be used so these covers received the ink jet machine cancellation "02/JUL/18 CARRIED BY NEW ZEALAND POST 110" (Figure 4).

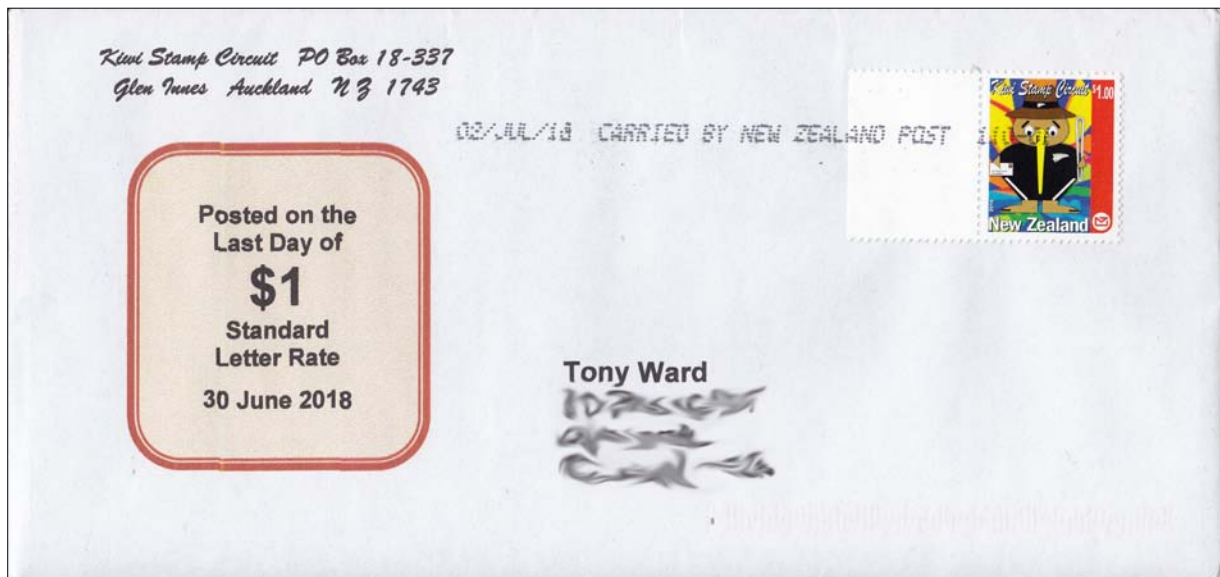


Figure 4: *The Kiwi Stamp Circuit CAL posted on Saturday 30 June 2018, last day of the \$1 standard letter rate, but cancelled by the New Zealand Post ink jet machine on the following Monday, 2 July.*

[image reduced to 75%]

Every year for about 50 years, a Youth Stamp Camp has been held somewhere in New Zealand. On 22-28 April 2018 this was held in a building at Wigram Skies in Christchurch. This area was formerly the Wigram Air Force Base and the CAL features the Harvard aircraft on a pedestal at the entrance to what is now a public road named Harvard Avenue. This location was in the past the main entrance to the Air Force Base. The label was used on a f.d.c. designed by one of the youth philatelists, Sharon McTaggart, which has a coloured cachet

depicting a female pilot and an aircraft commemorating the World War Two American Women Airforce Service Pilots [WASPs] (Figure 5) who trained in similar planes named AT-6 Texans. The covers were postmarked with the Christchurch MSC philatelic pictorial datestamp on 27 April 2018.

In July 2018 the organisers of the Armistice Stamp Show 2018, Dunedin arranged for the printing of a \$1.20 gummed label using the same design as had been previously issued as a \$1 CAL on 11 November 2017, which depicts a famous WWI poster of Lord Kitchener and the text “Wants You”.

There were no special f.d.c.s prepared for this value but I believe the first use was on 9 August when envelopes containing stamp show bulletins were postmarked with a Green Island PostShop rectangular hand datestamp. Also printed in July for the Armistice Stamp Show was a gummed \$1.20 CAL depicting the Victoria Cross, this being used on f.d.c.s datestamped on 24 July.

Also printed in July was a \$1.20 self-adhesive CAL with the text “Smaller. Smarter.” and a stylised kiwi, this being the same design that the energy company Electric Kiwi had used for a \$1 label back in July 2016, except that the 2016 CAL had a white value panel and the 2018 one has a red panel.

The organisers of the NZ2020 FIAP International Stamp Exhibition to be held at Auckland 19-22 March next year printed their first CAL in August. This was first used on a maxicard postmarked with the Auckland MSC philatelic pictorial datestamp on 21 September and also on the same day on special f.d.c.s postmarked at the New Zealand Post stand at the Macau 2018 stamp exhibition with a pictorial datestamp featuring a kiwi. The organisers later arranged for the same CALs to be overprinted with an added inscription in black in one line below the yacht reading “Ellerslie event centre, Auckland”. These overprinted labels were first used on the same special first day covers postmarked on 28 November at the New Zealand Post stand at the Thailand 2018 World Stamp Exhibition with a pictorial datestamp featuring a kiwi, this time facing left rather than to the right.



Figure 5: A cover designed and signed by young artist Sharon McTaggart .

[image reduced to 75%]

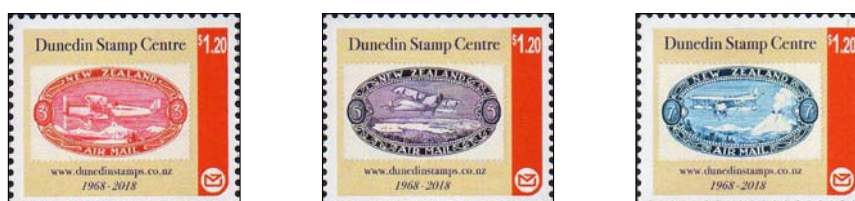


Figure 6: Three CALs featuring designs proposed by Jim White for airmail stamps in 1932.

Produced by his son Don White to mark 50 years of the Dunedin Stamp Centre.

In July Don White, owner of the Dunedin Stamp Centre since its foundation 50 years ago in 1968, had three gummed CALs printed (Figure 6). The labels all feature proposed airmail stamps designed in 1932 by Don’s father, Jim White, an architect who had been in the RFC during World War One. They are all oval designs depicting an aeroplane over a landscape scene, as follows: 3d carmine - Mt Cook; 5d violet - Wellington Harbour; 7d blue - Mt Ngauruhoe. These colours reflect those used for the airmail stamps issued in 1935, although none of the 219 designs proposed in 1932 were considered suitable.

Don delayed issuing these CALs until 28 September, when he used them on a DLE size f.d.c. with a colour cachet featuring the 7d stamp. This cover was datestamped with a large South Dunedin circular 43mm diameter postmark. Don also provided an informative card insert which contained a colour reproduction of his father's proposed 5d design.

A \$1.20 gummed CAL was printed in October for Waimate resident, Matt Henderson, a philatelist and postal historian. A first day cover for this was dated 28 November and hand-cancelled with a Waimate postmark. The label features a landmark feature of this South Canterbury town, the very tall former grain silos at the former Empress Flour Mill of Nicol & Sons Ltd at 166 Queen Street. The silos have paintings by local artist Bill Scott on them. Two of these painted silos appear on the CAL and depict, at the right, Dr Margaret Cruickshank and at the left, Eric Batchelor. Dr Cruickshank was the first lady to become a doctor in New Zealand. She was born in 1873 and practised as a GP in Waimate until her death during the 1918 flu pandemic aged only 45. A statue of her was unveiled five years later in 1923. Sgt Eric Batchelor was born in 1920 and served with distinction in Italy during World War Two and was the only New Zealander to be awarded the D.C.M. & Bar. He died in 2010 shortly before his 90th birthday. A street in Waimate was named for him: Batchelor Place. The f.d.c. was issued exactly 100 years after the date Dr Margaret Cruickshank died. The two silos immediately behind those shown on the CAL have paintings of another two local identities, Maori Chief Te Huruwharu and former Prime Minister of New Zealand Norman Kirk.



Figure 7: Part of a cover showing both a CAL and a 'Personalised Stamp' featuring Paula Wilkinson's photograph of a New Zealand Dotterel. [image reduced]

To conclude, there was some unwelcome news for CAL collectors in April with the announcement that, from 1 July 2019, New Zealand Post will not be supplying any labels ordered from that date in the form of the annual CAL packs. The final pack to be issued will therefore be a half-year pack containing only the CALs printed from January to June 2019. The reason for this is that New Zealand Post has decided to stop offering 'personalised stamps' (Figure 7). This was an option for customers to supply an image, on an attached label, to celebrate a birth, wedding or birthday, or for thematic subjects - as in the example shown above. Minimum order quantities were low. The only option now will be CALs, but with a new minimum order quantity of 50, the expectation is that this will greatly increase the number of CALs ordered in the future, far too many to include in an annual pack.

Thanks to Harold Howard for providing scans of the CALs and Tony Ward for scans of the covers.

1967 PICTORIAL ISSUE - THE TE ARO UNOFFICIAL COUNTER COILS

Paul Wreglesworth

For the 1967 Pictorial issue coils were produced, at the Government Printing Office, Wellington, for use with the counter dispensers.

These did not come into use until 1 July 1969, two years after the introduction of the decimal stamps. The denominations that were used were: 2½c, 3c, 4c, 6c, 8c (flag), 10c (second timber issue), 15c (second tiki issue) and the 20c (Taniwha). The 20c meat industry stamp was released in counter coils on 8 April 1970 to replace the Taniwha coils.

Between October 1969 and February 1970, the post office clerks at Te Aro, Wellington, made their own counter coils from sheets of 2½c, 5c, 8c (fruit industry) and 20c (meat industry) stamps (these are shown below). The numbers printed on the selvedge, between strips, were generally in black and printed using a standard numbering machine. In some cases these numbers were crossed through and an alternative number added in black ballpoint.

On 12 February 1970 the Te Aro post office staff were instructed to withdraw these unofficial coils.



Examples of the four values produced, unofficially, as counter coils at Te Aro Post Office, Wellington, between October 1969 and February 1970.



Phone: (03) 579 5650.

PO Box 5086, Springlands, Blenheim 7241.

The web site is up and running allowing orders to be placed directly once you have registered. Currently there are over 20,000 stamps, covers, postcards etc on the site and all are illustrated.

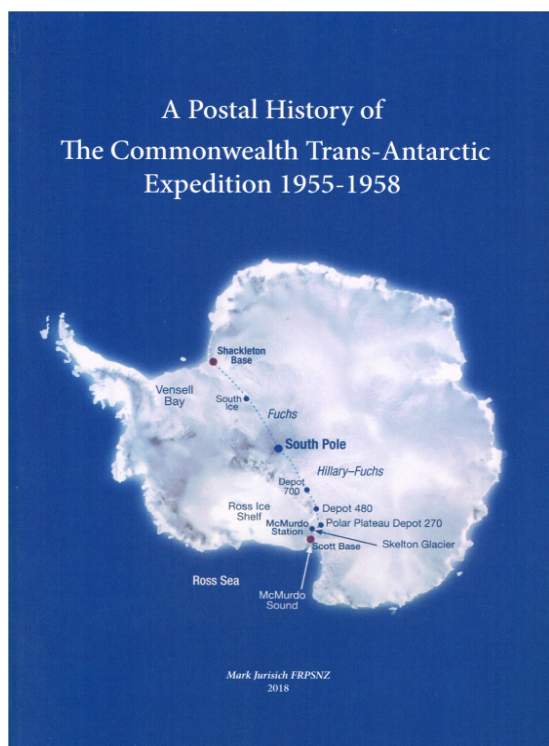
Email us if you have any problems registering or navigating around the site.

There is a search facility allowing you to search for your Interests. e.g. Entering the word 'Railway' brings up nearly 200 different items.

Website categories include:

- NZ definitive issues from Full Face Queens to the current issues.
- NZ Commemoratives from the 1906 Christchurch Exhibition onwards.
- NZ Health and Christmas issues.
- Booklets.
- Air mail stamps and covers.
- Life Insurance.
- Postage Due and Express stamps and covers.
- Postal fiscals and Revenue stamps.
- Cinderellas.
- Various miscellaneous issues and covers. Postal fiscals and Revenue stamps.
- New Zealand Postal History.
- New Zealand Postal Stationery.
- Antarctic stamps, Postcards and Postal History.
- Various British Commonwealth and Foreign Country's stamps and covers.

Latest Classic Stamps Publication.



A Postal History of The Commonwealth Trans-Antarctic Expedition 1955-1958 *Mark Jurisich. FRPSNZ.*

57 pages with 120+ covers in full colour.
Many of the covers are signed (Hillary, Fuchs etc).

Covers the story of the first crossing of Antarctica from the initial investigations in 1953 through to the Auckland home coming parade in 1958.

The story is based on the letters and covers sent to and from Antarctica by organising committees, expedition members philatelists and souvenir hunters.

A limited number has been printed and are available from Classic Stamps Ltd.

Price: NZ \$45 (incl GST); \$39.13 (ex GST).
Postage is at cost (ask for price).

PUBLIC & POSTAL AUCTIONS STAMPS & POSTAL HISTORY

Each year we offer thousands of items for sale via our Public & Postal Auctions and Direct Sale Lists. **Phone, email or visit our web site for more information.**

- NEW ZEALAND STAMPS
- COLLECTIONS & ACCUMULATIONS
- ESTATE LOTS
- MARITIME MAIL
- ERRORS
- WORLD STAMPS
- FULL FACE QUEEN COVERS
- VARIETIES



2019 Colour Catalogue of New Zealand Stamps



- Colour Photos & Prices for every New Zealand Stamp from 1855-2019
- Many Price Changes
- Only **\$10.00** post paid anywhere in New Zealand or **\$15.00** post paid anywhere in the world

Phone, email or visit our web site for more information.

PHONE +64 9 522 0311

FAX +64 9 522 0313

hello@aucklandcitystamps.co.nz
www.aucklandcitystamps.co.nz

1 Ngaire Ave Newmarket | PO Box 99988 Newmarket Auckland 1149 New Zealand

Dealers in fine stamps
of the World, Specialists
in New Zealand and the
Pacific Islands.

Auckland City Stamps
Licensed Auctioneers

EST. 1974

