



THE KIWI

JOURNAL OF THE NEW ZEALAND SOCIETY OF GREAT BRITAIN



*Image
at 90%*

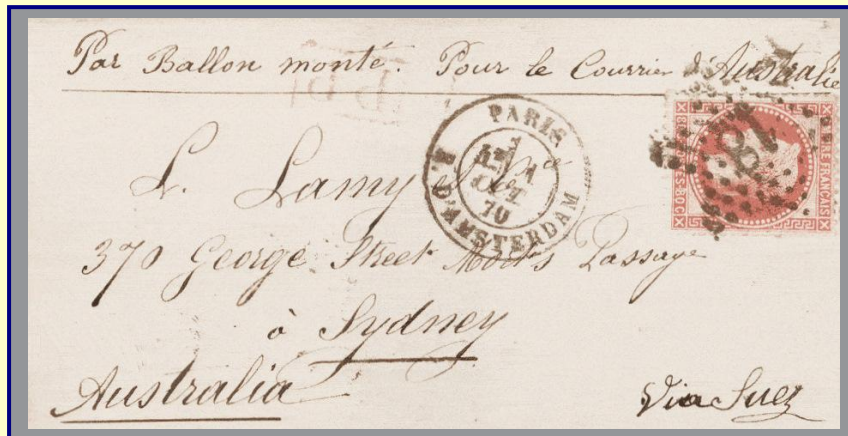
*A Farewell to Health Stamps
(page 24)*

VOLUME 67 NUMBER 1
WHOLE NUMBER 387

JANUARY 2018



Superb material for the discerning



The above cover was an example of the world's first airmail and is the only known Paris ballon post cover addressed to Australasia. In 2009 Mowbrays Australia sold this 1870 Siege of Paris ballon monté cover for NZ \$238,625 – then a record Australasian price for a philatelic item.



The above 13 August 1855 cover from Auckland to Birmingham, England, bears a pair of New Zealand's very first 1d full-face queen stamps. Only three covers bearing 1d SG1 FFQs are known – this being the earliest recorded date. It was acquired in 2009 by John Mowbray for a client for NZ \$138,000.

Mowbray Collectables buys and sells collections, stamps and postal history. What can you offer? Contact our friendly staff in the first instance.

Mowbray collectables offers New Zealand and world collections, stamps and postal history in monthly postal auction catalogues – free samples available!

Mowbray Collectables

Private Bag 63000, Wellington, New Zealand 6140

☎ + 64 6 364 8270
fax + 64 6 364 8252

mowbray.stamps@xtra.co.nz
www.mowbraycollectables.co.nz

THE NEW ZEALAND SOCIETY OF GREAT BRITAIN

Honorary President

Keith C. Collins

Honorary Chairman

John Stimson

Mead Cottage

Boulsters Lane, Maidenhead, SL6 8TJ

☎07710-336064

e-mail: john.m.stimson@gmail.com

Hon. General Secretary & Librarian

Michael Wilkinson

121 London Road,

Sevenoaks, Kent, TN13 1BH

☎017-32456997

e-mail: mwilkin799@aol.com

Honorary Membership Secretary

Mrs Esmé G. Diamond

9 Ashley Drive, Walton on Thames,

Surrey, KT12 1JL

☎01932-223280

e-mail: esmegdiamond@mac.com

Honorary Treasurer

Paul Woods

57 Grosvenor Drive, Whitley Bay,

Tyne & Wear, NE26 2JR

☎07446-936840

e-mail: pvdw1958@yahoo.co.uk

Hon. Packet Secretary

Professor John Hepworth

2, Carnoustie Close,

Fulwood, Preston, Lancashire, PR2 7ER

☎01772-861709

e-mail: j.d.hepworth@tinyworld.co.uk

Hon. Editor of *The Kiwi*

Paul Wreglesworth

37 Blakelow Road,

Macclesfield, Cheshire, SK11 7ED

☎01625-420694

e-mail: kiwieditor@gmail.com

Webmaster

Bob Clark

nzsgb1@googlemail.com

Website: www.nzsgb.org.uk

Representative in New Zealand

John Watts

jlwatts463@gmail.com

CONTENTS

Editorial	4
- <i>The Kiwi</i> - Advertisers in this Issue	
- <i>'The Kiwi'</i> Current Advertising Rates	
- <i>'NZSGB'</i> - Current Subscription Rates	
Society News	5
- <i>Membership News</i>	
- <i>Honour for a Member (Lindsay Chitty)</i>	
- <i>Programme of Society Meetings for 2018</i>	
Forthcoming Meetings	6
- <i>London</i>	
- <i>Midland Regional Group</i>	
- <i>North of England Regional Group</i>	
- <i>Scottish Regional Group</i>	
Notes of Meetings Held	7
- <i>Joint Scottish/North of England Group (October 2017)</i>	
- <i>Midland Regional Group (October 2017)</i>	
- <i>North of England Regional Group (November 2017)</i>	
New Zealand Post New Issue	10
- <i>The Queen's Platinum Wedding Anniversary</i>	
A Rare Eastbound Airmail Rate - A Follow Up (<i>Robert Clark</i>)	11
1946 Peace Issue - Identifying the Different Plates (<i>Frank Parkinson</i>)	12
George W Wilton - Chemist and Importer of Chemical Apparatus (<i>Paul Wreglesworth</i>)	16
The Airmail Labels of the British Commonwealth Pacific Airlines (<i>Laurence Kimpton</i>)	20
A Farewell to Health Stamps (Part 1) - (<i>John Watts</i>)	24
Request for Help from Members	
<i>AIR SERVICE INTERRUPTED/Air Service Cancelled</i> (<i>Robin Gwynn and Brian Peace</i>)	31
Results of the 2017 Annual Society Auction	32
Minutes of the 66 th AGM of the Society	33
Accounts of the Society	34

*The Society is affiliated to: The Association of British Philatelic Societies
the New Zealand Philatelic Federation
and the Association of Scottish Philatelic Societies.*



MOWBRAY COLLECTABLES

is proud to support the New Zealand Society of Great Britain
as its major sponsor

EDITORIAL

Make a note in your diaries for our next residential weekend which we are planning to hold from 28-30 September 2018 in the historic city of Bath. The first time we have held one of our popular weekends in a UNESCO World Heritage City in England. We did hold our 2004 weekend in the UNESCO Heritage City of Edinburgh, Scotland.

A whole pack of gremlins got into our distribution list for the November 2017 issue of *The Kiwi* and some members did not receive their copies as planned. If anyone has still not received a copy please contact me.

CORRIGENDUM

Volume 66, No.6

Page 199 - The caption under Figure 3 should read "1868 cover from Christchurch addressed to E W Stafford at Wellington".



THE KIWI - ADVERTISERS IN THIS ISSUE

ADVERTISER	PAGE
Mowbray Collectables	Inside Front Cover
Steven Zirinsky	23
Ashford Stamps Ltd.	23

ADVERTISER	PAGE
Classic Stamps Ltd.	Inside Back Cover
Auckland City Stamps	Back Cover

"Please mention the NZSGB when you speak with our advertisers"

THE KIWI - CURRENT ADVERTISING RATES

	Full (single insertion)	Full (3 or more consecutive)	Half (single insertion)	Half (3 or more consecutive)	Quarter (single insertion)	Quarter (3 or more consecutive)
Full Colour	£90	£75	£75	£60	£50	£40

NZSGB - CURRENT SUBSCRIPTION RATES

Membership rates are £20 (within the UK) and £25 (overseas) - with printed copy of *The Kiwi*.

Members who prefer to receive an electronic version of the journal (*e-Kiwi*), downloadable from the Society's web-site, as an alternative to the paper copy pay £20 regardless of country of residence.

Payment can be made by various means including PayPal ('gift' option). Details from the membership secretary esmegdiamond@gmail.com or via the web-site.

Membership Renewal Time

Members should have received a reminder concerning membership renewal. If you want to continue to receive *The Kiwi* then please act promptly.

If any of your details (address, e-mail etc) have changed please let the Membership Secretary know.

If you wish to change from paper to e-version of *The Kiwi*, or vice versa, do let us know.

SOCIETY NEWS

MEMBERSHIP NEWS

New Members:

A warm welcome to:

M. Benvie, Auckland, New Zealand

HONOUR FOR A MEMBER

Congratulations to member **Lindsay Chitty** on being elected a Fellow of the Royal Philatelic Society, London (FRPSL). Lindsay is currently President of the Royal Philatelic Society of New Zealand.



PROGRAMME OF SOCIETY MEETINGS FOR 2018

The programme for 2018 includes five London meetings, a residential weekend in 'Bath' and meetings of the Scottish, North of England and Midland Regional Groups.

London meetings are held at the Union Jack Club, Sandell Street, London SW1 8UJ (adjacent to Waterloo station).

27 January	11:00	Committee Meeting
	14:00	<i>Flaws, Errors and Oddities</i>
31 March	11:00	Items of interest and new acquisitions
	14:00	<i>Maritime and Naval Mail</i>
26 May	11:00	Items of interest and new acquisitions
	14:00	<i>Private Postal Stationery - Johnny Barkley</i>
28 July	11:00	Committee Meeting
	14:00	<i>Cinderellas - Jack Lindley</i>
24 November	11:00	Annual General Meeting
	14:00	<i>Auction - with prior viewing of lots</i>

RESIDENTIAL WEEKEND

A residential weekend is planned for the weekend of Friday 28 - Sunday 30 of September 2018. The venue will be a hotel in the historic town and UNESCO World Heritage City - BATH. More details to follow in due course.

MIDLAND REGIONAL GROUP

Group Contact:- Ian Samuel ☎ 0121 449 0849

17 February	2pm at St Anne's Church Hall, Park Hill, Moseley, Birmingham, B13 8EU
Autumn	To be arranged

NORTH OF ENGLAND REGIONAL GROUP

Group Contact:- Jack Lindley ☎ 0161 705 1074 e-mail: lindleyjack@aol.com

24 February, 12 May 8 September, 10 November	12.30pm: at St Luke's Church, Lodge Road, Orrell, Wigan, WN5 7AT
---	--

SCOTTISH REGIONAL GROUP

Group Contact:- Adrian Philbey ☎ 0141 562 5817 e-mail: adrian.philbey@ed.ac.uk

21 April	1pm at the ASPS Annual Congress, Dewars Centre, Glover Street, Perth, PH2 0TH
10 June	12.30pm: hosted by Alexander McCulloch
22 September	12.30pm: hosted by Adrian Philbey

FORTHCOMING MEETINGS

NEXT MEETING OF THE SOCIETY

The next meeting of the Society will be held on Saturday **27 January 2018**

at the **Union Jack Club**, Sandell Street, London, SE1 8UJ

14:00 - *Flaws, Errors and Oddities*

Most members must have something which fits this description
and are asked to bring material which is appropriate to the topic!

There will be a committee meeting in the morning starting at 11:00 am

MIDLAND REGIONAL GROUP

The next meeting of the Midland Group will be held on Saturday **17 February 2018** at the usual venue, St Anne's Church Hall (behind the Church) Parkhill, Moseley, Birmingham B13 8EU starting at 14:00. Will members please bring along some items of interest or a mini display.

Group Contact: - Ian Samuel ☎ 0121 449 0849

NORTH OF ENGLAND REGIONAL GROUP

The next meeting of the North of England Group will be held on Saturday **24 February 2018** at St. Luke's Church, Lodge Road, Orrell starting at 12:30. Members to display new acquisitions or items of interest.

Group Contact: - Jack Lindley ☎ 0161 705 1074 e-mail: lindleyjack@aol.com

SCOTTISH REGIONAL GROUP

The next meeting of the Scottish Group will be an informal gathering, at 13:00 on Saturday **21 April 2018** at the ASPS Congress in Perth. Meet in the café on the balcony of the Dewars Centre, Glover Street, PH2 0TH.

Group contact: - Adrian Philbey ☎ 0141 562 5817 e-mail: adrian.philbey@ed.ac.uk



THE SOCIETY WEB-SITE AS A RESOURCE FOR MEMBERS

The Kiwi (now downloadable in pdf format)

- * Vol. 1-61 (1952-2012) available to all in pdf format.
- * Vol. 62-65 (2013-16) available to members only.
- *password required - contact the editor of The Kiwi.*
- * Vol. 66 (current year) - available to *e-Kiwi* subscribers.



Society web-site: www.nzsgb.org.uk

MEETINGS HELD

REPORT OF THE 66th AGM OF THE SOCIETY

A report of the 66th AGM, held in London on 25 November 2017, can be found on pages 33-34.

.....

NOTES OF THE JOINT MEETING OF SCOTTISH AND NORTH OF ENGLAND GROUPS, CARLISLE, 7 OCTOBER 2017

Fourteen members attended this, the tenth biennial joint meeting, led, on this occasion, by Jack Lindley.

Rod Combe exhibited items with early receiving marks posted from Scotland to New Zealand and provided some history behind the letters. Interesting examples included letters addressed to Mrs Henderson at the Royal Mail Hotel, Hokitika, and to Mr Jamieson Gray in Timaru.

Stuart Potter illustrated the development of air mail services in New Zealand, including covers relating to flights by Imperial Airways, Empire Air Service, QANTAS Empire Airways and Tasman Empire Airways Limited (TEAL) service. Examples included cachets of different types and colours, covers signed by pilots, crews and passengers, and baggage labels. It was noted that covers were sometimes reused, illustrated by a 1933 cover signed by Oscar Garden. Several covers flown from New Zealand to Australia were back stamped in Sydney or Melbourne and transferred to other airlines to be forwarded within Australia.

John Gavin exhibited a range of Ross Dependency covers, including covers signed in 1957 by Arthur Helm, the Assistant Post Master, and Trevor Hatherton, a member of the Commonwealth Trans-Antarctic Expedition, during the International Geophysical Year. A cover was shown that carried a 3d Ross Dependency stamp with an illegal Australian cancellation. A cover purportedly from Discovery II carried a forged 1963 Auckland cancellation ... the ship had been decommissioned and broken up in 1962. A cover signed on 6th November 1963 by Brigadier Sir Bernard Fergusson, the New Zealand Governor General, must have been cancelled within hours of his arrival in the Ross Dependency. Another cover was shown that had been signed by Robert Thomson, Superintendent of the Antarctic Division of the Department of Scientific and Industrial Research.

Dave Stalker exhibited a comprehensive set of the first three years of Christmas first day covers (FDCs), from 1960 to 1962. All of these covers were produced privately, since the New Zealand Post Office first produced official FDCs in 1965; not all of the producers are known, but some were made in Australia and the United States in addition to New Zealand. Shown were a range of plain FDCs and some souvenir covers for stamp exhibitions. One of the 1960 covers was addressed to the Director General of the New Zealand Post Office. Examples were shown of cachets with different shades and one with a significant colour shift. Also shown was a 1960 FDC used for the 1961 issue.

John Hepworth displayed a detailed collection of newspaper wrappers, starting with the first issue on 1st April 1878, printed on smooth white paper without a watermark, along with an unlisted variant on off-white paper with a rough texture. The wrappers were embossed with a ½d design based on the 1873 newspaper stamp and carried the message, "THIS Wrapper may only be used for Newspapers, and must not enclose any letter or communication of the nature of a letter (whether separate or otherwise). If this rule be infringed, letter rates will be charged." The second issue in 1881 was printed on cream paper with a crown and stars watermark. In 1889, the border around the text was changed from straight to wavy lines. In 1892, the text was amended to, "THIS Wrapper may only be used for transmission of Newspapers WITHIN NEW ZEALAND ..." Examples were shown of a range of different types of mint and used wrappers, including those with inverted watermarks. Also exhibited were examples of the 1d Dominion, ½d King Edward VII, 1d King George V Field Marshal and 1934 Pictorial issues.

Ken Andison brought a wide ranging thematic exhibition of stamps relating to New Zealand production and industry was presented by Ken Andison. This covered manufacturing, sheep farming, dairy farming, fruit growing, mining, timber, fishing, tourism, sport, filmmaking, wine making, geothermal power, gas drilling, education, Antarctic research and services.

John Atkinson shared a wide range of covers related to the filming of the *Lord of the Rings* in New Zealand.

Paul Wreglesworth displayed illustrated envelopes and other items of stationery associated with companies which also advertised on the underside of the Second Sideface stamps in 1893. Included was an envelope from Truebridge, Miller & Reich, the company responsible for the contract with the Post Office. Other items shown were related to Nathaniel Dodgshun (Tweed Warehouse), B. Birnbaum & Son (Patent Odourless Waterproofs), Crease & Co. (A1 Coffee), Strange & Co. (Christchurch Department Store), George Wilton (Chemical Apparatus), T.H. Hall & Co. (Fry's Cocoa) and Christchurch dispensing chemist George Bonnington (Bonnington's Irish Moss).



Paul Wreglesworth explaining the background to some of his material.

Bob Clark showed a recently purchased cover that may have been flown on the third Pan American regular trans-Pacific flight in August 1940, which would make it the earliest known cover flown from the UK to New Zealand via the USA. He then showed early Health stamps (1929-1943), together with their use on air mail covers. One example was a first day cover of the 4d air mail stamp, dated 10 November 1931, which also carried a 1d Smiling Boy stamp.

Jack Lindley presented a display of King George V recess printed stamps, including a range of shades, trial colour prints, two perf pairs, plate corner blocks and official stamps.

Alexander McCulloch's display of 2d recess and surface printed King George V stamps commenced with the unissued 2d mauve pink, most of which were destroyed, finally issued as the 2d violet in 1915. However, it was soon discovered that, when signing a document or cheque across this stamp, the signature was not always legible. To overcome this problem, the New Zealand Post Office transposed the colours of the 4d yellow and 2d violet. The second sheet of Alexander's display showed the rare 2d aniline, followed by plate blocks and two perf pairs. Also shown were die and plate proofs of the 2d surface printed stamp. The 2d was issued surface printed in many shades of yellow; Alexander's exhibit included almost all of the differing shades of yellow and the types of paper used for these printings (De La Rue, Wiggins Teape, Cowan and Art paper). In his last sheet, Alexander asked, "What are the unauthorised plate proofs on granite paper?"

Lachlan Philbey exhibited a range of stamps and covers depicting Scouts in New Zealand, including the 1953 Health issue, the 1959 Auckland Pan-Pacific Jamboree issue, the 1962 Jamboree in Waiora, the 1966 Trentham (Wellington) Fourth National ('Progress') Scout Jamboree issue, the 1969 Fifth National (Pan-Pacific) Scout Jamboree in Kaiapoi (Canterbury), the 1972 Sixth National Jamboree in Pukekohe (Auckland) and the 2007 Centenary issue.

Adrian Philbey presented a history of Tin Can Mail between New Zealand and the island of Niuafo'ou, Tonga, illustrated by covers sent from 1932 to 1939, which were decorated by increasingly ornate hand stamped cachets in a variety of languages. A revival of the service after a volcanic eruption on the island was represented by a 1965 Matson Lines cover.

[Thanks to Adrian Philbey for preparing the meeting notes and providing supporting images]



NOTES OF THE MIDLAND GROUP MEETING, 21 OCTOBER 2017

Ian Samuel started with a collection of Official and Parliamentary covers with both preprinted and hand stamped cancellations from the Prime Minister, through various ministers and MPs, to a pair of very fine machine cancel covers from Government House.

Terry Hancox showed an in depth study of the 1977 Children's Health stamps concentrating on the miniature sheets with their printing and position errors. His computer work is brilliant.

John Potter followed with a resumé and display of the Great Barrier island pigeon post mail showing stamps, an original pigeongram flimsy and commemorative items from the Christchurch Society and Post Office miniature sheets.

John Biddlecombe had also brought along pigeon post items but after a quick re-sort showed a number of items not duplicating the previous display. He pointed out that the original rates were 1s per flimsy to the mainland and 6d per message to the island. The Christchurch issues were produced to help cover a loan for the purchase of an office building. Also shown were some of his collection of souvenir exhibition booklets from Panpex 1977 to the present day showing many variations in production.

Laurence Kimpton showed some early flying-boat covers from survey flights, including one to Australia signed by all the crew, a 1939 Delivery Flight souvenir booklet produced by one of the crew and a Certificate of Participation on a trans-Indian Ocean flight by Catalina to Ceylon. He finished with enlargements from the New Zealand Weekly Gazette showing one of the flying-boats in flight and on Auckland Harbour with one showing the PanAm Clipper.

Mike Smith followed with a mint pair of slot machine trial stamps of the 1d Universal stamps from 1905/6 followed by a display of the 4c on 2½c moth overprint stamp showing a wide variety of misplaced overprints in blocks.

Peter Denston showed his collection of Life Insurance stamps, with and without V.R. mint and nearly complete and a good selection of mint Arms stamps.

Ian Samuel closed the meeting by thanking members for an informative and entertaining afternoon.

NOTES OF THE NORTH OF ENGLAND GROUP MEETING, 11 NOVEMBER 2017

Other commitments reduced attendance on this occasion to five members.

Jeff Hook opened proceedings with a selection of Second Sideface stamps chosen to illustrate the different die states of the 1d, 2d and 6d values.

Paul Wreglesworth displayed covers carried by the Army, in 1973, when a bridge over the river Waiau was closed for repair cutting normal connection between Hanmer Springs and surrounding settlements. This was followed by examples of mail carried on board RMS *Ventura*.

Stuart Potter showed a range of covers with illustrations that had been added by an artist friend and then material related to Coastal Airways and the flight of the last Lancaster bomber in 1965.

John Hepworth exhibited a range of covers bearing endorsements which reflected the various consequences of the casualties of war. Covers from both of the World Wars had cachets including 'RETURNED TO NZ', 'LEFT NO ADDRESS', 'DECEASED', 'REPORTED KILLED', 'MISSING' and 'P.O.W'. John supplemented this with internment mail and mail from P.O.W held in Germany and Italy.

Jack Lindley displayed examples of the 1½d King George VI stamp and the 'All Up Empire Airmail Scheme' followed by a selection of stamps of NIUE from 1903 to 1950. Jack finished the afternoon with a range of postcards and illustrated envelopes showing New Zealand birds.

NEW ZEALAND POST NEW ISSUE

- THE QUEEN'S PLATINUM WEDDING ANNIVERSARY

While the Queen and Prince Philip were engaged in 1946, their engagement was not formally announced to the world until the following year, 10 July 1947, when Elizabeth turned 21.

On Thursday 20 November 1947, the royal couple were married in Westminster Abbey. Despite all their royal responsibilities, some of the most significant moments in their lives are family occasions. The births of their children, grandchildren, and great grandchildren are sure to have been among the highlights. The fourth generation of the royal family continues to grow, with another great-grandchild expected in the first half of 2018.

Together, the Queen and Prince Philip have broken many records. She is the longest-serving, and longest living, sovereign in New Zealand's history, and the first to visit this country while reigning. He is the longest serving consort and the longest lived male member of the royal family. They are the first royal couple to see three generations of successors to the throne. No other members of the royal family have ever celebrated a platinum wedding anniversary, which makes this a very rare and remarkable milestone by any standard.

New Zealand Post issued a set of six gummed stamps, with values of \$1.00, \$2.00, \$2.20, \$2.30, \$2.70 and \$3.30, on 20 November 2017, to recognise this significant milestone. These are in sheet and miniature sheet format.

Over their 70 years of marriage, the Queen and Prince Philip have achieved many remarkable milestones, of which family feature prominently. The stamps capture some of these magical moments.



Technical Details: Stamps and miniature sheet designed by Jonathan Gray, New Zealand Post.

Printed in four process colours plus high gloss litho varnish and silver foil

Printed by Southern Colour Print Ltd, New Zealand by offset lithography

Stamps measure: 35mm x 45.6mm Miniature sheet size and format: 115mm x 102mm (horizontal)

Paper is 'Tullis Russell' 104gsm red phosphor gummed stamp paper and perforations gauge 14.286 x 13.895

A RARE EASTBOUND AIRMAIL RATE

– A FOLLOW UP

Robert Clark



Figure 1: A registered cover to the UK flown on the first Pan American trans Pacific service on 20-24 July 1940.

I was interested to read Robert Odenweller's article in the last issue (Ref. 1) in which he shows one of the 863 covers sent to the UK, via Lisbon and the US, on the first regular Pan American trans Pacific service on 20-24 July 1940. The cover is franked with 2s and 3s values from the 1935 Pictorial issue, together with 1940 Centennial stamps to make up the postage rate of 6s3d. Odenweller comments that covers sent on this service, franked with one or more 1935 Pictorial stamps, are quite rare and that he had only heard of one other example.

In 2009 I wrote an article, 'Alternatives to the Horseshoe Route in June and July 1940', (Ref. 2) in which I described a registered cover franked with 6s7d (6s3d plus 4d registration fee) that is also franked with 2s and 3s values from the 1935 Pictorial issue. This cover is illustrated above (Figure 1). It is unusual in that it does not have the commemorative purple cachet, but is postmarked in Auckland on 19 July 1940 and has a San Francisco transit mark of 24 July 1940 (Figure 2) and so was definitely flown on the first flight.

References:

1. Odenweller RP, 'A Rare Eastbound Airmail Rate', *The Kiwi*, Vol.66, No.6, pp196-197, November 2017.
2. Clark R, 'Alternatives to the Horseshoe Route in June and July 1940', *The Kiwi*, Vol.58, No.2, pp42-47, March 2009.

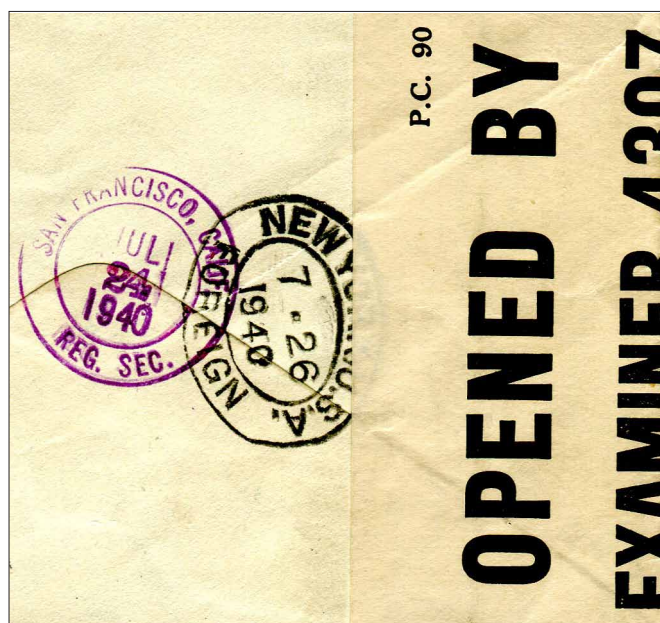


Figure 2: Reverse of the cover (part) showing a San Francisco transit mark of 24 July 1940.

1946 PEACE ISSUE

- IDENTIFYING THE DIFFERENT PLATES

Frank Parkinson

I read Paul McTaggart's article on the 1946 Peace issue (Ref. 1) with interest as I had never seen the plate numbers still attached to the sheets. These were obviously guillotined from the sheets before issue.

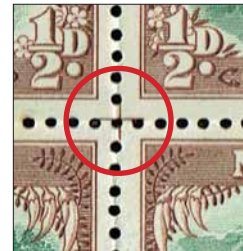
In his last paragraph Paul mentioned the problem of identifying the various plates. With full sheets it is relatively easy as each have various printing marks to assist.

½d Lake Matheson - Frame Plates 42725 and 42790

Both frame plates have similar guide marks between rows 7 and 8.



Frame Plates 42725 and 42790 - Rows 7 and 8, stamp 1

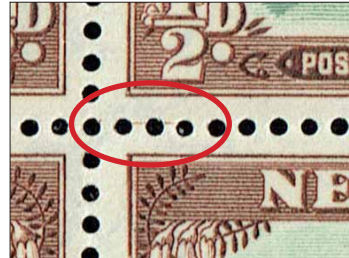


*Frame Plates 42725 and 42790
- Rows 7 and 8, stamp 8*

Frame plate 42790 has additional markings, horizontal lines, between rows 6 and 7 stamps 1 and 8.



*Frame Plate 42790
- Rows 6 and 7, stamp 1*



*Frame Plate 42790
- Rows 6 and 7, stamp 8*

½d Lake Matheson - Centre Plates 42724 and 42726

These are a little more difficult. Plate 42724 has recognizable printing marks at R 1/3, R 1/4, R 2/1 and R 12/6. R 1/3 has a diagonal row of dots below the reflection of the large tree on the left and R 1/4 has two prominent dots below the first single tree and level with the top of the reflection of the large tree on the left.



*Centre Plate 42724
- Row 1/3*



*Centre Plate 42726
- Row 1/3*



*Centre Plate 42724
- Row 1/4*



*Centre Plate 42726
- Row 1/4*

3d Airforce - Frame Plates 42798 and 42856

These plates have similar guide marks but Frame plate 42798 also has a horizontal guide line between Rows 6 and 7 at the right of stamp 1, and another at the left of stamp 8. Also noticeable on this plate is a crack below S of POSTAGE towards N of NEW on R5/8.



*Frame Plate 42798
- Rows 6,7/ Stamp 1*



*Frame Plate 42798
- Rows 6,7/ Stamp 8*



*Frame Plate 42798
- Row 4/8
crack below S*

3d Airforce - Centre Plates 42796 and 42883

The Centre plates 42796 and 42883 are easy to differentiate when a whole sheet is available. Centre plate 42796, at R3/2 has the strengthening of the back of the tail of the top right plane.

Centre plate 42883, on R2/4 also has doubling of the same plane's tail, but also has strengthening of the lines in the sky to the left of the rudder.



*Centre Plate 42796
- Row 3/2*



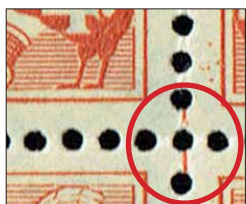
*Centre Plate 42883
- Row 2/4*

4d Army - Frame Plates 42787 and 42795

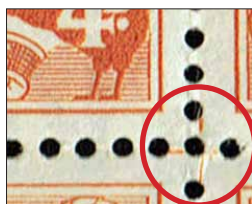
Frame plate 42787 has a vertical line guide mark between Rows 7 and 8, stamps 4 and 5. Frame plate 42795 has a cross in that position.

4d Army - Centre Plates 42788 and 42789

Centre plates 42788 and 42789 have a variety of re-entries but the easiest to identify is found on stamps from Centre plate 42788 which has a guide mark cross, with a long vertical bar and very short cross bar, at R12/5. It can be seen on the hill, to the right of the hay stacks.



*Frame Plate 42787 -
Rows 7,8/ Stamps 4 and 5*



*Frame Plate 42795 -
Rows 7,8/ Stamps 4 and 5*



*Centre Plate 42788 -
Row 12/5*

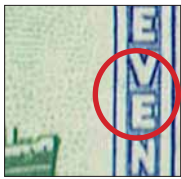
5d Navy - Frame Plates 42794 and 42850

Frame plate 42794 has a horizontal guide line at the left of VE of REVENUE on R14/5 and a similar line is found at R15/5. Frame plate 42850 has a horizontal guide line between S and T of POSTAGE at R9/6 and also at R10/6. These are not as obvious as the other guide marking.

5d Navy - Centre Plates 42791 and 42792

One Centre plate was numbered 42792, the other number is unknown, but I shall call it, 42791. Centre plate 42791 has a notable scratch, at R 8/1, from the top of the passenger ship's mast - the 'trailing aerial'.

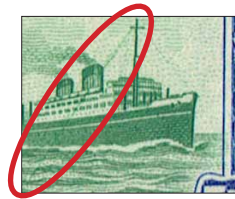
Centre plate 42792 shows as a distinct thickening of the bow of the passenger ship at R 14/1.



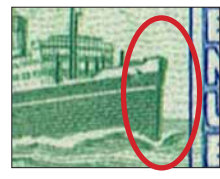
*Frame Plate 42794
- Row 14/5*



*Frame Plate 42850
- Row 9/6*



*Centre Plate 42791
- Row 8/1*



*Centre Plate 42792
- Row 14/1*

6d Industry – Frame Plates 42853 and 42854

Frame plate 42853 has doubling of the lower left horizontal frame at R 5/8 which is clearly thickened. At R 6/1 there is a diagonal line across the foundry's crucible - probably a plate crack.

Frame plate 42854 has doubling of the frame lines in the top right corner at R 6/1.

6d Industry – Centre Plates 42851 and 42852

Centre plate 42851 has doubling of the vertical lines to the right of the tree on the right side at R 5/1.

Centre plate 42852 has doubling of the vertical lines at R 8/1 but not as clearly seen, just thickening.



Frame Plate 42853 - Row 6/1



*Centre Plate 42851
- Row 5/1*



*Centre Plate 42852
- Row 8/1*

8d Knight with St George Cross - Frame Plates 42752 and 42855

Frame plate 42752 has doubling in the veins of the laurel leaves below the left value at R 15/8, most noticeable being the fifth leaf down. This plate also has red flaws on the upper leg of the knight at R 8/8 and, on many sheets, another on the left edge of the cloak at R 8/9.

Frame plate 42855 does not have these or any other significant varieties.



*Frame Plate 42752
- Row 15/8*



*Frame Plate 42752
- Row 8, Stamps 8 and 9*

There was evidently only one centre plate, number 42763, with no known varieties.

9d Franz Joseph Chapel - Frame Plates 42723 and 42878

Frame plate 42723 has a prominent horizontal line to left of the bar of the cross at R3/3.

Frame plate 42855 has several veins in the leaves at left doubled, the most obvious example is at R8/7.



*Frame Plate 42723
- Row 3/3*

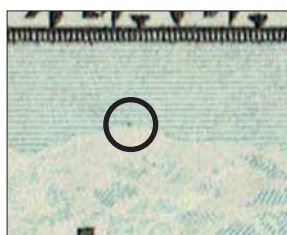


*Frame Plate 42855
- Row 8/7*

9d Franz Joseph Chapel - Centre Plates 42799 and 42800

Centre plate 42799 has a blue dot on top of the mountain at R15/8.

Centre plate 42800 has two blue dots near the right edge of the stamp at R15/8.



Centre Plate 42799 - Row 15/8



Centre Plate 42800 - Row 15/8

1/- National Campanile Plates 1A and 1B

There are no recorded varieties on either plate of the 1/- value.

I hope, that for any collectors keen to study this issue, that this brief study will help in differentiating the plates. I will be happy to forward my list of the varieties recorded on this issue to anyone who may be interested. I can be contacted through the Hon. Editor or directly by email: frank@fparkinson.nz

Reference:

1. McTaggart P, 'New Zealand 1946 Peace Issue - Waterlow Plate Numbers Confirmation and New Findings', *The Kiwi*, Vol.66, No.5, pp160-162, September 2017.

THE SOCIETY WEBSITE AS A RESOURCE FOR MEMBERS

The Kiwi (now downloadable in pdf format)

- * Vol. 1-62 (1952-2013) available to all in pdf format.
- * Vol. 63-66 (2013-16) available to members only.
- **password required - contact the editor of *The Kiwi*.**
- * Vol. 67 (current year) - available to *e-Kiwi* subscribers.



Society website: www.nzsgb.org.uk

GEORGE W WILTON - CHEMIST AND IMPORTER OF CHEMICAL APPARATUS

Paul Wreglesworth

Of all the adverts that appeared on the underside of the Second Sideface stamps in 1893 one of the most sought after is the one that advertises 'CHEMICAL APPARATUS, Geo. W. Wilton, Chemist, Adelaide Road, Wellington' (Figure 1). Appearing only once in the sheet of 240 stamps, at position 207 (lower left pane in the second and third settings) it is one of the most elusive of the adverts.



Figure 1: Wilton's advert, in a range of colours, which appeared only once on each sheet.

So who was George Wilton and what was his business?

George Wilton (Figure 2) was born in Liverpool, England in 1861 and educated in Doncaster, South Yorkshire. He arrived in New Zealand, with his parents Mr and Mrs Matthew Henry Wilton, his brother Matthew and sister Lucy on the ship *Portland* in April 1880 when he was aged 19.

The family settled in Marton where his father, a qualified dispensing chemist, took over the dispensing duties for Dr Skerman who, at the time, was the only doctor in Marton and had undertaken his own dispensing. When local pharmacist Henry Lyon died in December 1880 Wilton took over the established business in High Street before building new premises in Broadway, Marton. Matthew Henry Wilton senior died on 10 December 1893.

WILTON'S STOMACH & LIVER PILLS. The mildest, safest, best, and cheapest. Postfree for 1s 6d in stamps.
M. H. WILTON,
Chemist, Marton.

*Advert for MH Wilton
Chemist, Marton.
(Wanganui Herald 1888)*

WILTON'S NEURALGIA MIXTURE,
cures Neuralgia and strengthens
the system; in bottles, at 2/6. M. H.
WILTON, Chemist, Manaia.

*MH Wilton junior set up his own
business in Manaia in 1887.
(Hawera & Normanby Star 1887)*

Both George William and Matthew Henry junior worked in their father's pharmacy in Marton, subsequently passing their dispensing chemist examinations before embarking on separate pharmaceutical careers.

Matthew junior opened his own dispensing chemist's business in Manaia early in 1887, and sometime later, in 1904, is listed as a 'Manufacturing Chemist' at The Avenue and River Bank, Wanganui.



Figure 2: George William Wilton

George William Wilton worked for a short period with JS Welsman of Napier. In April 1886 George married Emily Henderson, the daughter of a Marton flour mill owner and they moved to Wellington where he established the firm of Geo. W. Wilton & Co. at Adelaide Road that same year.

George operated as a manufacturing and dispensing pharmacist at his Adelaide Road premises from where he also acted as dispensing contractor to the Wellington Hospital and HM Asylums at Mount View and Porirua.

In 1896 he purchased the business of Mr RG Burn in Upper Willis Street and three years later, in November 1899, Wilton added the business of Mr WE Woods, who had traded as the Co-Operative Drug Store (opposite the Royal Oak Hotel) at 3 Cuba Street, Wellington. This gave Wilton three retail outlets in the city.

While the focus of Wilton's business continued to be prescription dispensing, a point he stressed in his newspaper adverts, (see below) he also enjoyed much success with products he imported or manufactured himself. 'Wilton's Old English Cough Linctus' and 'Wilton's Hand Emollient' were extensively advertised and the latter, under the trade name 'SYDAL', was still being promoted well into the 20th century.

PRESCRIPTION DISPENSING.
THIS IS THE MOST IMPORTANT BRANCH OF A CHEMIST'S BUSINESS,
AND
GEO. W. WILTON
Has always made a special point of conducting it with the utmost regard to the safety and benefit of the public.
Fourteen years' successful business in Adelaide-road should be a guarantee that every satisfaction will be given at No. 3, Cuba-street (opposite the Royal Oak Hotel).
Prescriptions and Family Recipes are dispensed with the utmost care from the choicest drugs, at the most reasonable rates.
A Register of Qualified Nurses is open to the medical profession and the public, free of charge.
GEO. W. WILTON,
DISPENSING CHEMIST,
3, CUBA-STREET, 53, ADELAIDE-ROAD, 215, WILLIS-STREET.
AGENT FOR GATENBY'S BLUE FLAG LIVER CURE.

Wilton stressed the importance of dispensing.
(Evening Post 1900)


therefore that, when the opportunity presented itself, he was willing to advertise on the underside of stamps in 1893.

Wilton also held administrative positions within the pharmaceutical community. He was a member of the Wellington Chemist Provisional Council of 1899 and the following year held the post of Registrar for the New Zealand Pharmacy Board. Amongst the other members of the Pharmacy Board was George Bonnington the Christchurch pharmacist who advertised his 'Bonnington's Irish Moss' on the 1893 stamps.

In the years that followed Wilton is listed at various addresses in Wellington, at 25a Cuba Street (1907) and 61 Cuba Street (1911) but he also expanded outside the city. In 1907 he purchased the business in scientific apparatus that had been run by Messrs. Gray Bros. and AJ Watkins in Auckland and opened a branch at Shortland Street in that city (see advert on page 18). In 1915 a Christchurch branch was opened.

GEO. W. WILTON,
IMPORTER OF
**CHEMICAL APPARATUS,
BACTERIOLOGICAL APPARATUS,
CHEMICALS, &c.,
ADELAIDE ROAD, WELLINGTON, N.Z.**

**WILTON'S
ECONOMIC
FOOD
WARMER
(PATENT.)**



A simple, neat, and effective apparatus for keeping infants' food warm for 8 or 10 hours without trouble, inconvenience or expense.

The Terrace, Wellington, Oct. 27th, 1898.
Dear Mr. Wilton,—Your Patent Economic Food Warmer is most successful and answers its purpose in every way.
I am, yours sincerely,
GEORGE E. ANSON, M.D. (Canlab.)
Wellington, 16th March, 1891.
George Wilton, Esq., Chemist,—Dear Sir,—I have used your Athletic Embrocation for some time past, and can testify with pleasure to the great benefit I have derived from its use. I find that after a hard day's training a good rub down with it will remove all stiffness of the limbs. I have tried several embrocations, amongst them Eilman's, but for removing stiffness and fatigue I much prefer yours to any other. I consider it a really valuable and cheap preparation, and should be used by all who are training for sports or football.
Yours faithfully,
KORSMAN L. OURN.
The FOOD WARMER can be obtained at the D.I.C. or from the Patentee.
Every athlete should use WILTON'S ATHLETIC EMBROCATION, which is strongly recommended by the best runners and trainers in New Zealand. It is cheap and remarkably effective. Price 1s. 6d. per bottle, or by post 2s.
GEO. W. WILTON,
Chemist,
Adelaide Road, Wellington.

*An 1893 newspaper references Chemical Apparatus
- also advertised on the stamps of that same year.*
(Fair Play 1893)

Alongside his core business he began to import chemical apparatus and other scientific equipment. He also developed a device for keeping infants' food warm and applied for a patent in 1890 as 'Wilton's Economic Food Warmer'.

There is no doubt that George Wilton was a very successful businessman who was prepared to advertise his products and his services extensively. It is perhaps not surprising

Got a Bad Cold?
**Wilton's Old English
Cough Linctus . . .**



Is a remedy that has given unflinching satisfaction for many years. In cases of Asthma and Coughs of long standing, it gives such great relief that the sufferer will not be without it.
The price of this celebrated medicine is 1/6 and 2/6 per bottle. Made only in the Proprietor,
GEO. W. WILTON,
Dispensing Chemist
3, CUBA STREET,
AND
53, ADELAIDE ROAD,
Note—Wilton's Old English Cough Linctus will kill "a bad cold."
**Wilton's
Hand Emollient,**
Best Value for 1/- in New Zealand.
REG. TRADE MARK.

Wilton's cough linctus and hand emollient were heavily advertised.
(Freelance 1901)

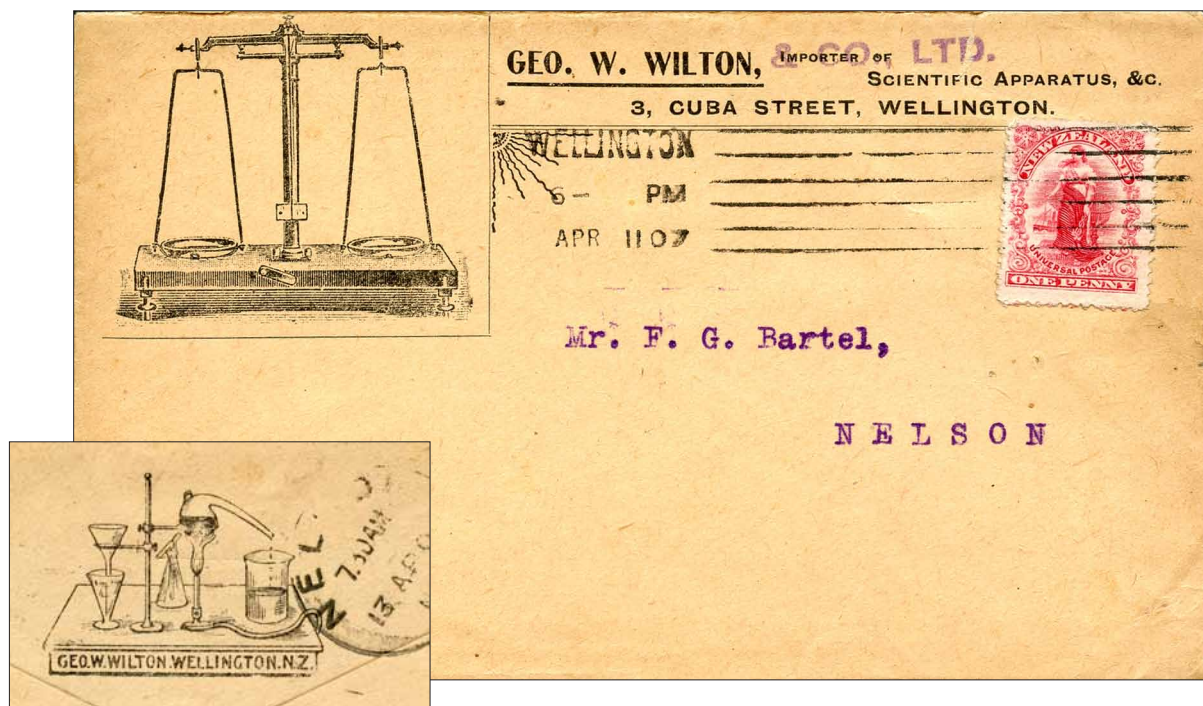
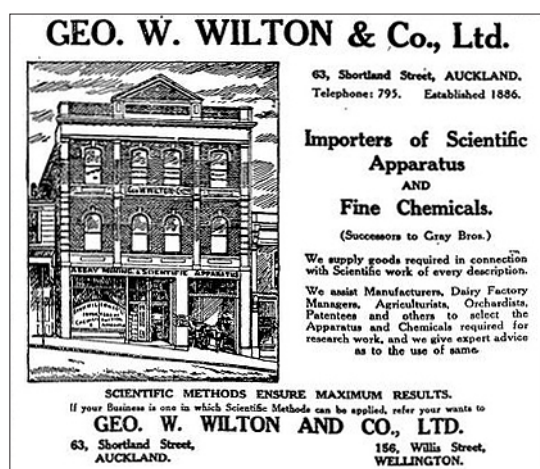


Figure 3: An envelope posted in 1907 from Geo. W. Wilton & Co. Ltd. trading from Cuba Street, Wellington illustrated with examples of some of their scientific apparatus. A set of scales can be seen on the front and chemical apparatus on the back flap of the envelope (inset).

In the years following the First World War George W Wilton & Co. Ltd., focussed on their scientific equipment business (Figure 3).

George Wilton died in November 1936 (Ref. 1) at Wellington where he had lived for almost 50 years, apart from a period in Auckland and two years absence in England. He was survived by his widow, two sons, two daughters and seven grandchildren. One of his son's Norman Aubrey Wilton, who had been part of the Company for some time, assumed overall control and the business moved subsequently to 156 Upper Willis Street where the premises were rebuilt at sometime between 1936 and 1941 (Figure 4).

The Company did a lot of work with dairy companies and mining companies as well as supplying schools with more general scientific equipment which they referenced on the envelopes they used for business correspondence (Figures 5 and 6).



Wilton & Co.'s Shortland Street premises, Auckland. (Auckland Star 1924)



Figure 4: Geo. W. Wilton & Co. Ltd.'s premises at 156 Willis Street, Wellington, probably built in the 1930s.

In 1962 the firm of Geo. W. Wilton & Co. Ltd. was acquired by HB Selby Australia Ltd. Major changes ensued with further growth as a result of the acquisition of new agencies and products. However in 1993 Wilton Instruments, as it was then known, merged with Biolab Scientific and the Wilton name ceased to exist.

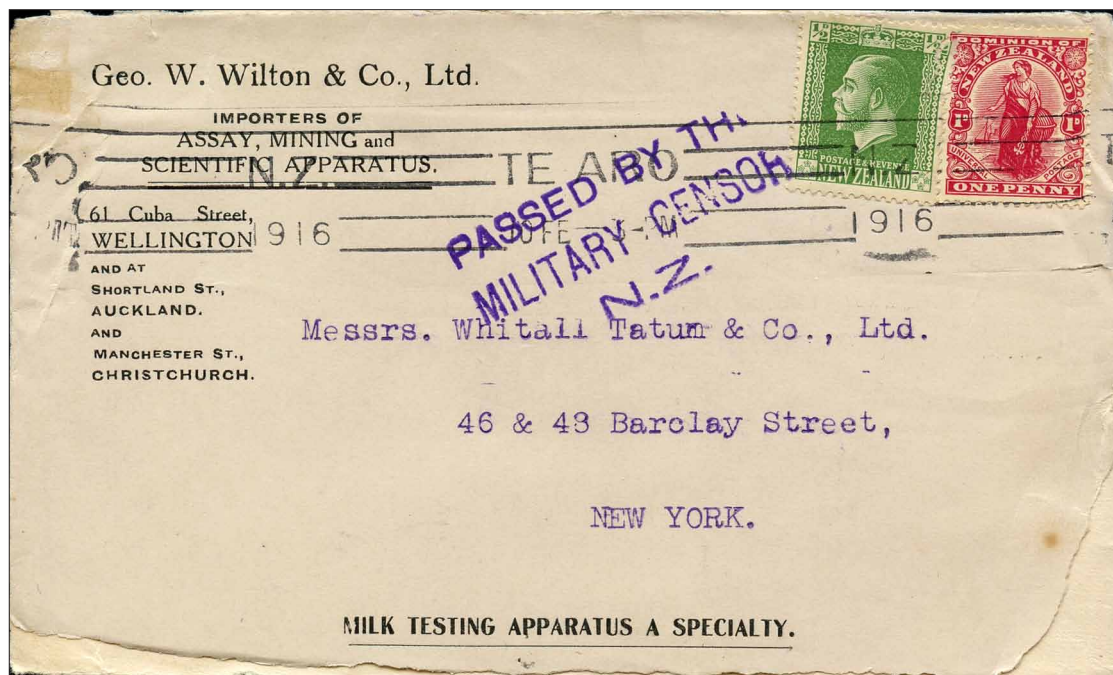


Figure 5: An envelope posted in 1916 highlighting the shift in emphasis to 'Assay, Mining and Scientific Apparatus' and 'Milk Testing', trading from premises in Wellington, Auckland and Christchurch.

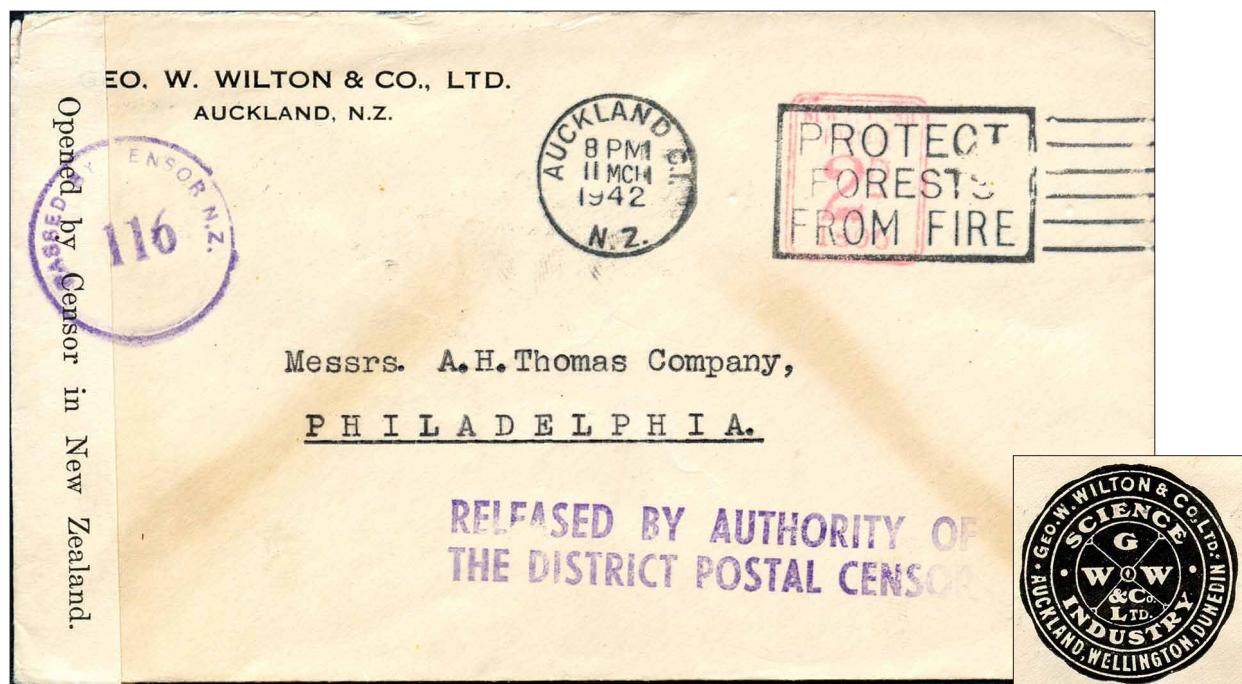


Figure 6: An envelope from Geo. W Wilton & Co. Ltd. posted from Auckland to Philadelphia in March 1942. The back flap of the envelope has a printed logo (inset right) showing the three cities from which they still operated.

Reference Sources:

1. Obituary (GW Wilton), *Evening Post*, 13 Nov. 1936 (available at <https://paperspast.natlib.govt.nz/newspapers>)
2. Much of the information, including the advertisements, used in this article has been drawn from the Papers Past website (available at <https://paperspast.natlib.govt.nz/newspapers>).

THE AIRMAIL LABELS OF BRITISH COMMONWEALTH PACIFIC AIRLINES

Laurence Kimpton

British Commonwealth Pacific Airlines (BCPA) operated a trans-Pacific service which linked Australia and New Zealand with the USA and Canada between September 1946 and May 1954. Pan American Airways (PAA) also operated a service from Auckland to San Francisco from May 1946 and Canadian Pacific Airlines (CPA) from Auckland to Vancouver from February 1952. Higher postage rates were charged for mail carried by PAA and CPA than for mail carried by BCPA until 12th July 1953 (with the exception of a period from 1 January to 2 June 1947 when the rates were the same). Senders of mail were instructed by the New Zealand Post Office to indicate on their envelopes which airline they wished to use. To assist with this, airmail labels produced by BCPA and, less often, by Pan American Airways were made available in post offices from late 1948, alongside those issued by the New Zealand Post Office and by the New Zealand National Airways Corporation (which operated mainly internal air services). As the airline labels were available only on request, their use was considerably less than the post office labels. The labels also helped to publicise the airlines.

Three different types of airmail label were issued by BCPA between 1948 and 1950. Although printed in Australia, the labels were not made available in Australian post offices, but BCPA used them on their own correspondence from their head office in Sydney.

The first type of BCPA airmail label was issued in late 1946 or early 1947, in perforated sheets of 128 (16 rows of 8) (Figure 1). This type was also issued in booklets containing 10 panes of five labels (Figure 2). Instead of being perforated, the booklet labels were separated by horizontal cuts and were rouletted along their left hand side for ease of removal from the booklet. As they were only distributed in New Zealand, the details of BCPA services printed on the booklet covers apply only to New Zealand services. The first type of label is most frequently seen on covers commemorating important events in BCPA's history such as the introduction of Douglas DC-6 aircraft (Figure 3), less frequently on commercial mail (Figure 4). The booklet label appears to have been seldom used.



Figure 1: The first type of BCPA airmail label.

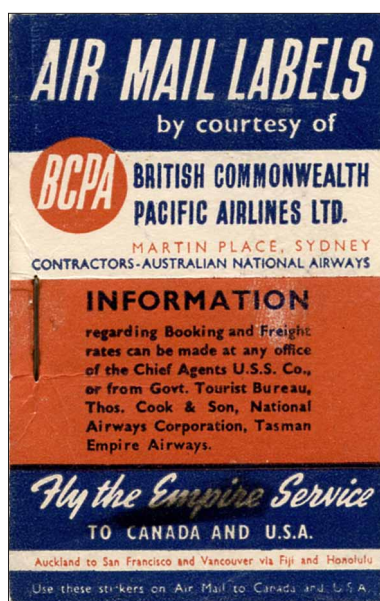


Figure 2: The booklet (front cover - left, rear cover - centre) containing ten panes of the first type of BCPA labels (right).



Figure 3: Cover to USA posted at Wellington on 11 January 1949 and flown on the first BCPA DC-6 service to San Francisco. It bears the first type of BCPA airmail label.



Figure 4: Cover to Canada posted at Wellington on 11 January 1949 bearing the first type of BCPA airmail label. The label has been stuck over a post office airmail label. The franking of 1s 5d includes 2d late fee. The late fee would have been paid as the fortnightly BCPA service was due to depart from Auckland on the following morning, 12 January. It would have been flown to Auckland by NAC (New Zealand National Airways Corporation). From Vancouver it would have been flown by Trans-Canada Airlines to Montreal.

The second type of BCPA airmail label was issued in late 1948 in perforated sheets of 72 (18 rows of 4) with a varnished finish (Figure 5). There are two varieties: one in a medium shade of blue, the other in a darker shade. The second type of label was used much more frequently than the first (Figure 6).



Figure 5: *The second type of BCPA airmail label.*

(image reduced to 75%)



Figure 6: *Cover to the USA posted at Dunedin on 11 March 1952 bearing the second type of BCPA airmail label.*

The third type of BCPA airmail label (Figure 7) was issued in 1950 in rouletted sheets of 54 (9 rows of 6). There are two varieties, one printed on white paper with a varnished finish, the other printed on white paper with a flat finish. This label was infrequently used on mail, possibly because post offices had plentiful stocks of the second type which continued to be used quite frequently in the early 1950s. The design of the third type of label was also used as an imprint on long envelopes produced by BCPA.



Figure 7: The third type of BCPA airmail label.

Reference Sources:

1. L J Kimpton, *British Commonwealth Pacific Airlines 1946-1954*, published by the author, 2005.
2. J A Stapleton, *New Zealand Air Post Cinderellas*, pub. Air Mail Society of New Zealand, 1992.

NEW ZEALAND

**Ask for your free
Postal Auction catalogue!**

Specialised, simplified, postal history, Chalons,
revenues, errors, all manner of NZ material,
as well as worldwide!

Email ashford@stampsale.com (or mail/phone/fax)







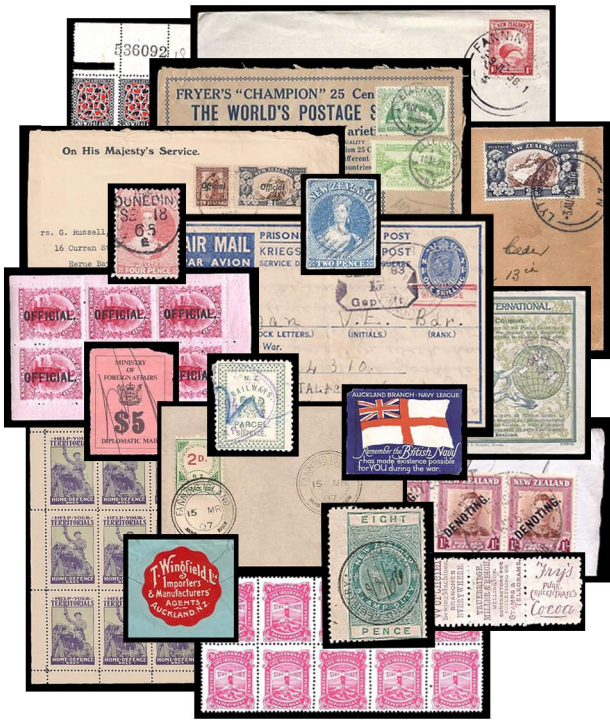
Ashford Stamps Ltd

P.O. Box 9845, Newmarket, Auckland 1149, New Zealand.
Email ashford@stampsale.com
Fax +64 9 520 5947 Telephone +64 9 520 5946
Managing Director: Brian Rumsey, member NZSDA, APS

STEVEN ZIRINSKY

MEMBER PTS, APS, NZSDA, APTA, PPS

NEW ZEALAND



PO BOX 230049, Ansonia Station, New York, NY 10023 USA
szirinsky@cs.com

www.zirinskystamps.com

@ZirinskyStamps

A FAREWELL TO HEALTH STAMPS

John Watts

It is now 89 years since the first New Zealand Health Stamp was released and, through a series of articles I will revisit some of these popular issues.

The reason for the introduction of these special stamps can be traced back to the endeavours of two ladies.

The first, Dr Elizabeth Gunn (Figure 1), was a general practitioner in Wellington before joining the school medical service in 1912. In 1919 she made a wager with a local farmer friend that she could improve the health of children if they were subjected to lots of fresh air, sunshine and a healthy diet.

Gunn won her initial bet at a camp held that year at Turakina and repeated the practice annually for the next ten years. When the concept was publicised many groups throughout New Zealand copied the exercise.



Figure 1: *Children's health pioneer
Dr Elizabeth Gunn.*



Figure 2: *Mette Kirstine Nielsen.*

Whilst it was Elizabeth Gunn who was largely responsible for establishing the Children's Health Camp Movement it was a Scandinavian immigrant living in Norsewood, Mette Kirstine Nielsen (Figure 2), who was primarily responsible for the introduction of Health stamps.

Mrs Nielsen had seen how, in her native Denmark, the sale of charity labels for use on Christmas mail (Figure 3) was a way for ordinary people to give small sums to charity, raising funds to assist sick children and eventually build a tuberculation hospital.

With the assistance of her local Women's Institute, in 1926, she wrote to the wife of the Governor-General and her local MP and, when the suggestion was discussed with the Post and Telegraph Department, it was agreed that there would be an annual Health issue with funds raised going to the Health Camp movement. But instead of a label it would be a 1d stamp with an additional 1d surcharge which would be for charity purposes.

Such stamps had been approved for international use through the Postal Convention agreed by the UPU at their conference held in Stockholm in 1924. However, in New Zealand, it was necessary to amend the 1929 Finance Act to allow a stamp to be sold for a sum greater than its postal value.



1909



1908



1910

Figure 3: *Examples of the Danish charity labels that influenced Nielsen.*

[images courtesy of John Denune]

On 5 October 1929 the Government Printer was instructed to prepare a design for a stamps that embodied three specific features: A nurse in uniform, the slogan “Help Stamp Out Tuberculosis”, the inscription “Postage 1d., Charity 1d” and the International Anti-Tuberculosis Cross.



Figure 4: Two final essays (left and right) and the issued stamp (centre) for the 1929 Health stamp.



Figure 5: Mrs NR Jones (née Burt) holding a photograph of herself in nurses uniform.

The next three issues all ran into problems. The 1930 stamp design was planned to feature a smiling boy produced by L.C.Mitchell. The order was placed with Perkins, Bacon & Co. for a die and plate and the die was produced and proofs submitted for review. However Perkins, Bacon announced that due to pressure of work in hand they could not produce the plate in the time required. With no time for the plate to be made by an alternative London firm the Government Printer was requested to produce a plate similar to that for the 1929 issue replacing the wording “Help Stamp Out Tuberculosis” with “Help Promote Health” and changing the date to 1930.

The stamp was placed on sale on 29 October 29 but for some reason the Post & Telegraph Department reissued the 1929 again on 5 December which was met with considerable complaints from stamp collectors and dealers. By the time both issues were withdrawn on 28 February 1931 sales of the 1930 stamp had only achieved a level of 36% of the sales of the 1929 issue.

The design for the frame and vignette were drawn by Stanley Davis of the Advertising Branch of the New Zealand Railways Department and he used, as the model for the central part of the design, a recently qualified nurse, Nell Burt, calling on a photograph taken by A. Billings of Levin (Figure 5). Nurse Burt was the niece of P.N Cryer, of the Post Office staff, who later became Director General of the Post and Telegraph Department.

The first stamp was widely publicised (Figure 6) and was well received by the public with £2,470 raised from the sale of the stamps.

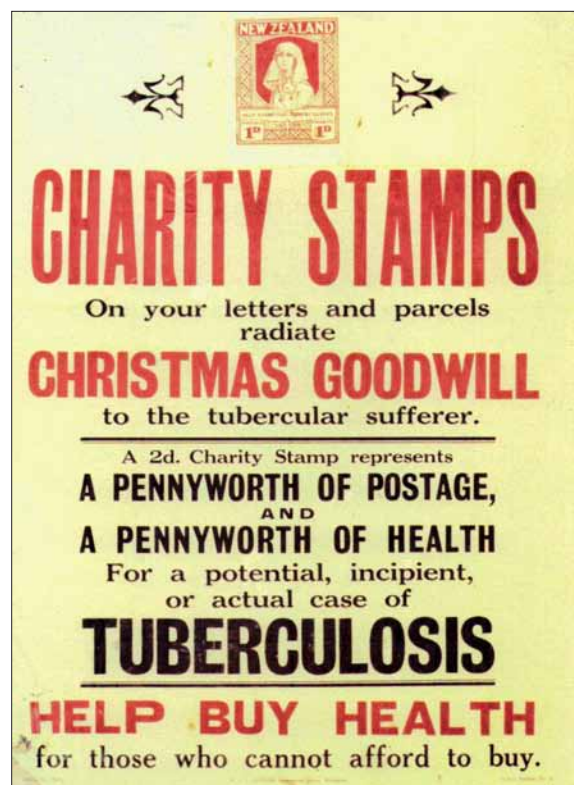


Figure 6: A publicity poster for the first health stamp.

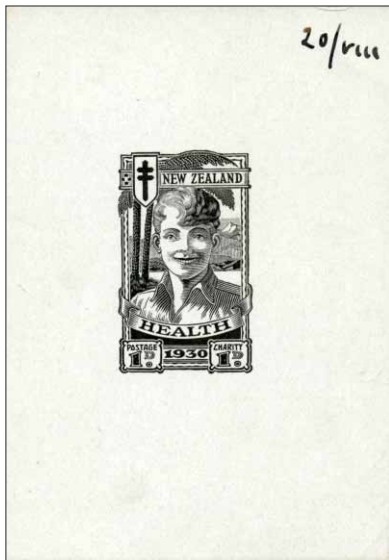


Figure 7: 1930 Royal Mint proof

the Finance Act to allow for the proposed new face value.

William R Bock of Wellington was employed to make a new plate of similar design to the Royal Mint plate but with the postage value of 2d.

It was then discovered that the Royal Mint plate, 120 impressions (10 rows of 12), had been spaced too close vertically and the trial printed sheets could not be perforated satisfactorily with a comb head. The vertical width of each gutter between impressions was approximately $\frac{1}{2}$ mm short of the required measurement. To correct this, horizontal cuts were made between rows 3&4, 6&7 and 9&10. Metal spacing strips were inserted in the cut spaces, enabling perforation with the comb head. Consequently perforations on the 1d stamp are seldom found well centred.

Sales were affected by the prevailing economic conditions and only £778 was raised for the summer camps, the lowest annual figure from these special issues.



Figure 9: Publicity labels used to promote sale of Health Stamps.

For the 1931 issue the order for the plate was placed with the Royal Mint London who had previously tendered for the 1930 issue with a proof (Figure 7).

During 1931 New Zealand was affected by the worldwide financial depression and options were considered for raising additional revenue. One proposal was to increase postal rates and, on 26 June 1931, the inland commercial rate was raised from $\frac{1}{2}$ d per ounce to 1d and the universal letter rate from 1d to 2d per ounce.

This presented problems with the planned Health stamp issue, as a single stamp was intended for the universal letter rate. The Finance Act, 1929 stipulated that charity stamps should not have a face value exceeding 2d. It became necessary therefore to amend



Figure 8: Publicity poster for the 1931 health stamps.

There was criticism that, with the early issues, there was too much emphasis on tuberculosis, some people arguing that it might give the impression that New Zealand was an unhealthy country.

Publicity material (Figure 8) had a further message - encouraging the public to use the Health stamps on Christmas mail.

Publicity labels (Figure 9) were issued, by the Post Office, in 1932 and 1933 following the poor sales of 1931. These were distributed free to business houses to be placed on the reverse side of envelopes that were mailed out.



Figure 10: *Original painting and the 1932 issued stamp.*

the Health stamps. It was considered that the monies raised were for the benefit of Health Camps and were not intended to be absorbed into the general charities budget. So for 1932, and all future issues, the word 'HEALTH' was incorporated into the design.

The first two sheets off the press were presented to the Governor-General Lord Bledisloe on 16 November 1932 whilst he was visiting Otaki Health Camp - two days before the official date of issue, 18 November. Sales eventually raised £990 which was approximately 25% greater than for the 1931 issue.

James Berry submitted his first two Health stamp designs for the 1932 issue (Figure 11 and Front Cover) and whilst these were not accepted that year one was adopted for the 1933 issue. His original artwork for 'The Pathway to Health', included the word 'Charity' but this was changed to 'Health' for the issued stamp. Berry went on to have 14 further Health stamp designs accepted, his last being that for the year 1958.



Figure 11: *James Berry's essay for the 1932 issue.*



Figure 12: *The first issued Health Stamp First Day Cover.*

The 1932 stamp design, produced by WJCooch and RETripe, was based on a painting 'Suspira' by Miss Dorothy Tennant (later Lady Dorothy Stanley on her marriage to Sir Henry Morton Stanley, the noted African explorer).

There was considerable criticism of the issued stamp as the subject, Hygeia, has a snake coiled round her arm-there are no snakes found in New Zealand. She is shown raising a wine goblet to the sun which some said suggested alcoholic tendencies-not something that promoted a healthy lifestyle!!

The public also asked questions about use of the word 'CHARITY' on

The engraver for the 1933 issue was HTPeat and he made alterations to the length of the sun rays which was not well received as the design looked more like a sunset than a sunrise. The number of stamps sold showed a further improvement compared to 1932 with £1,082 raised for the Health fund.

1933 saw the collecting of Health stamp 'First Day Covers' come into vogue. Prior

to this date covers were generally produced to commemorate an event. The cover shown on page 27 (Figure 12) was produced specifically for the first day of the 1933 Health stamp's availability. Walter Nicholas of Dannevirke (Figure 13) produced the cover for members of the *Kiwi Exchange Club* - just 50 covers were issued.

The 1935 Health stamp 'Key to Health' design was based on a photograph taken by the designer, S Hall of the Postal Division, Wellington of a young girl, Joan McKenzie, playing on the beach at Paraparauna (Figure 14).

In 1935 the Postal Department, in association with the Health Camp Committee, implemented an intensive campaign to boost the sale of Health stamps through production of a special cover which, with stamp attached, sold for 3d. Stamp sales reached a new record level of 1,250,057 with 51,759 of those on the Post Office cover (Figure 15).



Figure 14: A young Joan Mckenzie on Paraparauna beach.

Otaki, Port Waikato and Omaui, purchased an old homestead for a Christchurch camp and provided funds for new camps at Roxburgh, Nelson, Gisbourne and Auckland. Unfortunately the onset of WWII resulted in material shortages and building restrictions which slowed down developments. However publicity given to the plans to build new permanent camps gave an initial fillip to the sale of Health stamps.

The design approved for the 1938 Health stamp, by James Berry, was based on a theme



Figure 13: Walter Nicholas produced covers for members of the 'Kiwi Exchange Club'.

King George V died in the January of 1936 and the New Zealand government deliberated on the most appropriate form of memorial to a King who seemed to have epitomised family virtues.

In Britain a memorial fund was set up devoted to the establishment of playing fields. New Zealand was comparatively well endowed with outdoor sports facilities and, in late 1936, Prime Minister J Savage announced that a King George V Memorial Fund would be dedicated to 'Permanent Health Camps for Children'. A cover promoting the fund is shown on page 29 (Figure 16).

A campaign to raise money was launched on 22 March 1937 with a public target of £50,000. All expectations were exceeded with public subscriptions raising £74,000 and, with late donations and a government subsidy, the figure for the Memorial Fund Appeal reached £180,000.

A King George V Memorial Fund Act was passed in September 1938 to establish a Trust Board be under the control of the Minister of Health. By March 1940 the Fund had made grants to existing camps at

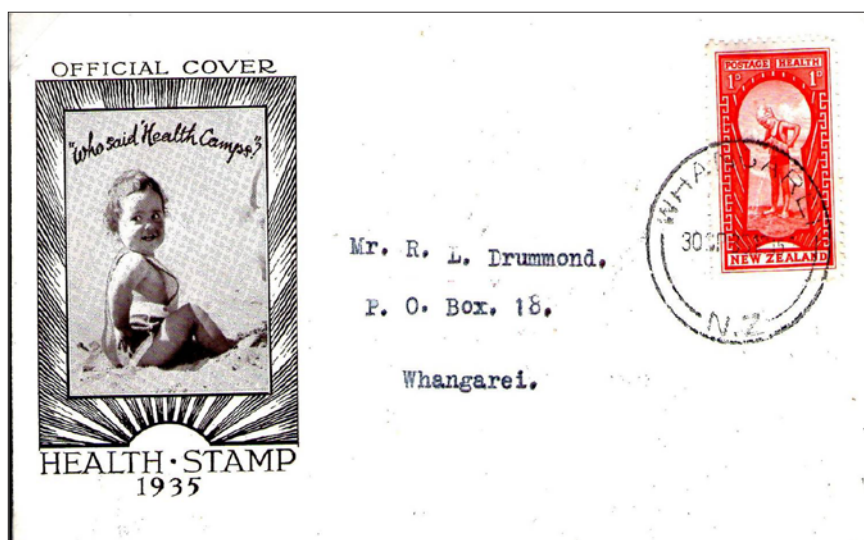


Figure 15: A special Post Office cover boosted Health Stamp sales in 1935.

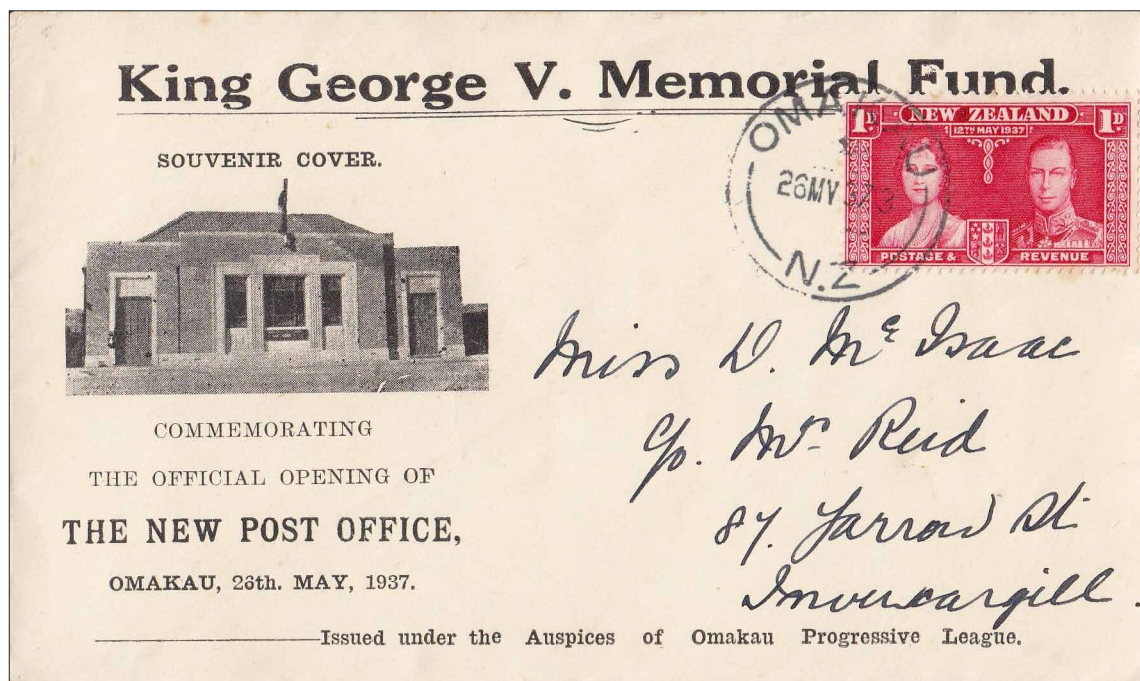


Figure 16: A promotion cover for the King George V Memorial Fund.

[image courtesy of S Jones]

suggested by SHall and GBull both of the Postal Department of “two small children playing on a lawn emphasising the benefit of fresh air in the life of a young child”. The final design was an interesting example of artist licence as the final design was formed from two photographs of the same child.

The model for the stamp was Peter Bradshaw (Figure 17) (shown later in life). The stamp shows him as a left-handed child playing with a toy, he was in fact right-handed. The photograph was inverted and changes traced to provide a design balanced. A total of 1,234,720 stamps were sold.



Figure 17: Peter Bradshaw, photographed in 1995, with the original photographs of him which were used as the basis of the artwork for the 1938 Health Stamp.

[photograph credited to Craig Simcox]

They say that lightning does not strike twice, but for the 1939 Health stamp again two photographs were used as the design base (Figure 18) and again artistic licence used to obtain a balanced picture.

The stamp design was the work of SHall, based on three photographs taken in the Wellington area. The first shows three boys playing with a small ball at Oriental Bay, one of them in a position to catch it. The second photograph taken at the Basin Reserve shows a boy reaching up to catch a large ball. A third photograph, of Wakefield Park, provided a backdrop for the composite scene.



Figure 18: Two images were combined for the 1939 Health stamp.

This was the first two stamp Health stamp issue, with the health surcharge being ½d and 1d for the lower and higher valued stamps respectively.

The stamps were due to be issued on 2 October 1939 but this was delayed because, soon after the stock had been received from the printers, an increase in the postal rate was announced, effective from 1 October. Both stamps had new values overprinted in black with the ½d value altered to read 1d and the original 1d value to read 2d. It may have been the uncertainty that prevailed with the outbreak of WWII on 3 September but the sale of the two stamps combined was 20% less than the single 1938 stamp.

The same basic stamp design was retained for 1940, but a new printing was made with the correct postage values. Because of the low sales for 1940 (two values combined for just 644,503), with paper in short supply, to avoid waste the 1940 'remainders' were used for 1941 with a small additional printing. To distinguish the 1941 issue the stamps were overprinted with the year '1941' in black. The 2d value of the 1940 and 1941 issues was printed in orange-brown.

There was now a noticeable decline in the sale of Health stamps. This may have been because it had not been appreciated that the King George V Fund was only intended for capital work, or because of the rise in postal charges, or maybe having the same basic stamp design three years running was not well received.

(To Be Continued).

Acknowledgments:

Thanks to Terry Hancox for help with some of the illustrations and to John Denune for the Danish Christmas seal images. John has a website, christmasseals.net for anyone interested in these items.

Reference Sources:

1. *The Postage Stamps of New Zealand* Vol. 1, 2, pub. Royal Philatelic Society of New Zealand.
2. Tennant M, *Children's Health, The Nation's Wealth, A History of Children's Health Camps*, pub. Bridget Williams Books, 1994.

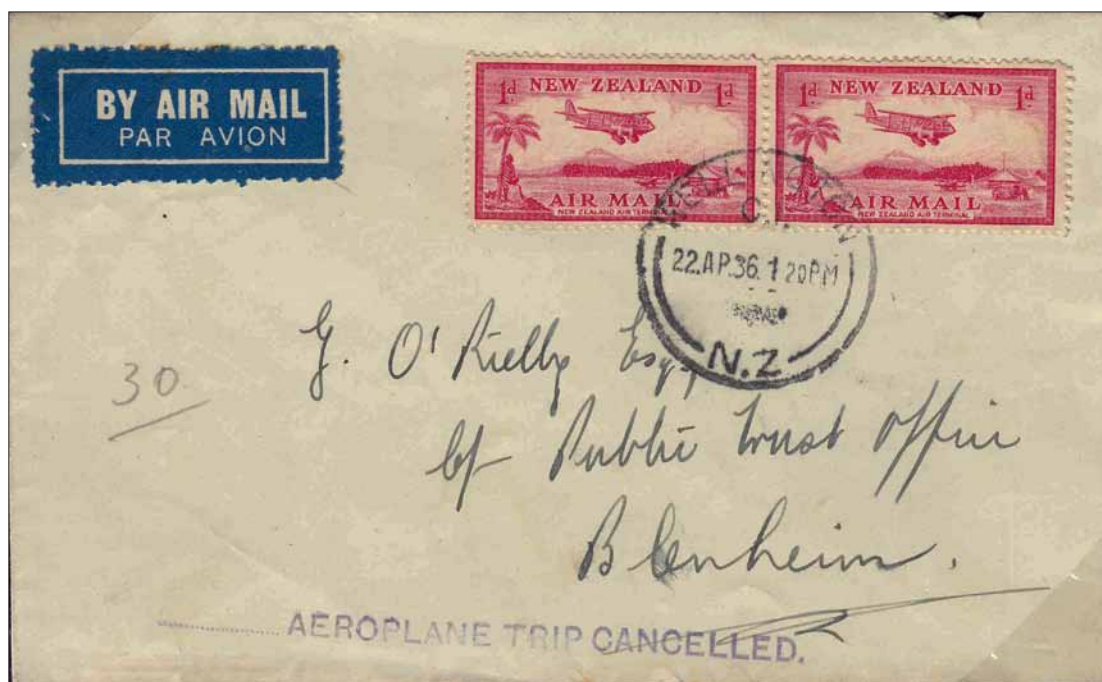
REQUEST FOR HELP FROM MEMBERS

AIR SERVICE INTERRUPTED/Air Service Cancelled

Robin Gwynn RDP FRPSL and Brian Peace FRPSL APR are producing a study of these cachets which appeared on New Zealand mail between 1936 and 1976. A preliminary census has identified over 120 examples.

It would be helpful if members with examples of these cachets could forward colour scans to Brian at brpeace@ntlworld.com including scans of the reverse where backstamps exist.

Please note that scans of covers from the flights on 30 September-2 October 1947 are not required.



Cover endorsed 'Aeroplane Trip Cancelled'.



Cover endorsed by hand 'Trip cancelled'.

RESULTS OF THE 2017 ANNUAL SOCIETY AUCTION

The Society held a successful auction on 25 November 2017. Total sales, on the day, were £13,196 with further offers anticipated for unsold lots. 63% of lots offered were sold. The Society thanks all vendors for their participation and the following members of the ‘Auction Team’ for all their efforts:

Brian Stonestreet	:	Auctioneer
Andrew Dove	:	Auction catalogue compilation
Brian Stonestreet and Michael O’Keefe	:	Display of lots
Michael O’Keefe and Graham Browne	:	Handling of lots during auction
John Stimson	:	Recording, payments, posting lots, vendor liaison post sale.

Lot	£	Lot	£	Lot	£	Lot	£	Lot	£	Lot	£
A	7.00	70	10.00	113	62.00	170	12.00	227	5.00	288	16.00
B	12.00	71	3.00	114	33.00	171	20.00	229	16.00	289	35.00
C	7.00	72	7.00	115	25.00	172	43.00	230	6.00	290	8.00
D	5.00	73	10.00	116	33.00	175	65.00	231	9.00	291	14.00
E	3.00	74	8.00	117	33.00	178	260.00	232	12.00	292	15.00
G	11.00	75	8.00	118	33.00	181	240.00	233	16.00	293	10.00
H	4.00	76	4.00	119	60.00	182	190.00	234	26.00	295	21.00
K	20.00	77	30.00	120	300.00	183	12.00	235	10.00	297	18.00
I	5.00	78	9.00	121	41.00	184	30.00	236	3.00	299	120.00
5	9.00	79	30.00	122	110.00	187	6.00	237	9.00	300	16.00
6	10.00	80	25.00	123	41.00	188	6.00	238	8.00	301	14.00
9	15.00	81	20.00	124	225.00	190	8.00	239	16.00	302	84.00
10	15.00	82	22.00	125	45.00	191	11.00	240	6.00	306	18.00
11	9.00	83	21.00	126	45.00	192	14.00	244	280.00	309	80.00
12	21.00	84	3.00	127	45.00	193	16.00	245	17.00	317	15.00
13	5.00	87	750.00	128	128.00	194	18.00	246	6.00	318	24.00
14	5.00	88	26.00	131	18.00	195	28.00	247	22.00	319	100.00
15	5.00	89	30.00	132	40.00	196	16.00	251	245.00	323	140.00
18	12.00	90	25.00	133	65.00	197	17.00	252	320.00	326	15.00
19	5.00	91	21.00	134	30.00	198	25.00	253	9.00	333	350.00
20	5.00	92	90.00	137	35.00	199	27.00	254	4.00	336	64.00
39	15.00	93	125.00	138	33.00	200	11.00	255	8.00	337	100.00
40	30.00	94	275.00	139	35.00	201	11.00	256	4.00	346	62.00
41	30.00	95	160.00	141	28.00	202	30.00	258	4.00	347	500.00
42	25.00	96	160.00	142	35.00	203	31.00	260	9.00	348	35.00
44	20.00	97	12.00	143	35.00	204	36.00	261	11.00	351	35.00
47	5.00	98	25.00	144	50.00	205	32.00	264	40.00	354	75.00
49	8.00	99	25.00	145	45.00	206	18.00	267	8.00	357	1000.00
50	4.00	100	25.00	146	20.00	207	31.00	268	63.00	365	25.00
53	15.00	101	90.00	150	140.00	208	17.00	272	25.00	369	140.00
54	10.00	102	100.00	156	100.00	209	5.00	275	30.00	374	140.00
55	15.00	103	90.00	157	25.00	210	10.00	278	8.00	377	140.00
61	8.00	104	275.00	158	200.00	211	20.00	279	15.00	383	475.00
62	11.00	105	45.00	159	75.00	213	15.00	280	4.00	384	110.00
63	8.00	106	30.00	160	75.00	214	10.00	281	10.00	385	65.00
64	6.00	107	30.00	162	8.00	219	5.00	282	25.00	387	261.00
65	6.00	108	20.00	163	5.00	220	5.00	283	40.00		
66	8.00	109	15.00	165	63.00	222	21.00	284	26.00		
67	9.00	110	31.00	166	40.00	223	15.00	285	20.00		
68	8.00	111	70.00	167	55.00	224	9.00	286	72.00		
69	3.00	112	55.00	168	180.00	226	10.00	287	45.00		

New Zealand Society of Great Britain

Minutes of the 66th Annual General Meeting held on 25th November 2017

The Chairman, John Stimson, opened the meeting at 11am by welcoming the 17 members present.

1. Minutes of the 65th Annual General Meeting

The minutes, as published in the January 2017 issue of *The Kiwi*, were approved as a true record.

2. Chairman's Report and Review of 2017 (John Stimson)

The Chairman reported that the Society remained in good health. When membership of many similar societies was declining, it was pleasing that the Membership Secretary, Esmé Diamond, could report that membership of the Society had remained roughly constant at around 220 for the last three years. Participation at the London meetings and at the Scottish, Midland and North of England groups remained strong, with loyal support from a core of members. *The Kiwi* continued as a key benefit for members and the Society's website was an increasingly important recruitment tool and resource for research.

It was therefore gratifying, and a tribute to Paul Wregglesworth and Bob Clark, that at the 15th New Zealand Philatelic Literature Exhibition in Christchurch in October *The Kiwi* had been awarded a Large Vermeil (having received a Vermeil in 2015) and the website had been awarded a Vermeil. Congratulations were also due to Terry Hancock who, at the same Exhibition, had been awarded two Large Silvers and a Silver for three of his monographs. To supplement the electronic copies available on the website, printed copies of Terry's monographs were being presented to the Royal Philatelic Society London and the Royal Philatelic Society of New Zealand and would be available in the Society's Library. A further initiative was the joint publication by the Society and the RPSNZ of Andrew Dove's book on *Warime Interment in New Zealand*, copies of which Andrew would be bringing with him on return from a current visit to New Zealand.

The Chairman concluded his remarks on a sombre note by recalling the death in June of Bernard Atkinson, who had been a stalwart contributor to the work of the Society over very many years, most recently as its Vice President. That role was to be left vacant for the moment.

3. Treasurer's Report and Accounts (Paul Woods)

The Treasurer presented his report and accounts for the year to 30th September 2017. He noted that the accounts had not yet been scrutinised by an independent examiner, for which he would welcome a volunteer. Particular points included:

- a net surplus of £2,180 on the main account, increasing the balance to £49,007;
- a balance of £2,116 in the Packet account, making a combined balance of £51,123;
- a surplus of £676 from the 2016 auction, slightly higher than in 2015;
- an increase of £112 in subscription income, but an increase of £113 in the net cost of *The Kiwi*;
- a contribution of £500 from the Packet account;
- continuing low interest (~0.25%) on the Society's reserves; and
- no proposals for changing subscription rates for 2018.

The Treasurer continued to explore options for securing more income from the Society's reserves to offset their erosion by inflation without exposing the funds to undue risk. The Society could not access the higher rates available to charities. Some costs, for example for meeting room hire, were known to be increasing and the Society should not necessarily expect the surpluses achieved in recent years to continue.

The following points were raised in discussion:

- Of the 36 members who currently opted for the *e-Kiwi*, most lived in the UK. If more overseas members chose that option there would be considerable savings in postage – e.g. the Royal Mail's rate for a 250g large letter by airmail to New Zealand was £5.05. Overseas members choosing the printed *Kiwi* did pay £5 more in subscriptions but, when it last discussed this, the Committee had concluded that a higher premium would not be justified since

The Kiwi was the major membership benefit for overseas members, who rarely attended UK meetings and could not subscribe to the Packet.

- The Society maintained a separate Packet account so that the Packet Secretary could process the flow of payments from purchasers and to vendors without involving the Treasurer in every transaction. Funds in the Packet account were assets of the Society like those in the main account, but a significant balance was maintained in the Packet account so that it could meet its future liabilities to vendors. The Treasurer said that he would review with the Packet Secretary whether this remained appropriate.

4. Packet Secretary's Report and Accounts (John Hepworth)

The meeting considered a written report and accounts for 2016/17 from the Packet Secretary. Sales were £1,300 lower than in 2015/16, reflecting fewer Packets in circulation, but a transfer of £500 to the Society's main account was still possible. The balance in the Packet account carried into 2017/18 was £2,809, of which £690 represented cheques issued but not yet cleared. The Packet Secretary was grateful to those members who had responded to his requests for more material, but more vendors and purchasers were always welcome. Packet sales currently averaged 40% and some books sold almost completely, indicating significant demand for good material at the right price.

5. Reports by the Secretary and Library Liaison Officer (Michael Wilkinson)

The Secretary circulated details of the London and regional meetings planned for 2018, including the residential weekend in Bath on 28th to 30 September. The topics for the London meetings (e.g. *Flaws, errors and oddities* on 27th January) were all ones on which he hoped many members would be able to contribute. Expressions of interest and offers of presentations for the residential weekend were invited.

The Secretary also reported that the Union Jack Club had announced a 38% increase, from £290 to £400, in its meeting room hire rate from the start of 2018. That meant that the hire charge for one meeting would roughly equal the total annual subscriptions of all those attending. This was a matter that the Committee would wish to consider, though several members stressed how convenient the UJC was and urged the Committee to continue holding meetings there, despite the cost. The Secretary had been advised by professional meeting organisers that £400 was about "the going rate" for a full day meeting in central London. A further factor was that the UJC stored the display frames used by the Society (though these were owned by the Forces Postal History Society). Once the new premises of the RPSL were available (probably not before 2019) their suitability as a venue for Society meetings could be considered.

The Secretary also introduced a revised application form for those wishing to join or renew their subscription to the Society. This was needed mainly because the law on Data Protection was being tightened in May 2018 to require verifiable rather than implicit consent for the storage and intended use of personal data collected by organisations such as the Society. The new form would also serve to check that details held by the Society remained up to date. The new form was completed by most of those present, and other members would be invited to complete it in the coming months.

The Library Liaison Officer reported that use of the Library, which continued to operate as part of the National Philatelic Society Library, remained modest. Loans and photocopies could be requested through him or directly from the NPS. Thanks to John Biddlecombe, and with permission from the copyright holders, complete sets of the *Campbell Paterson Bulletin* (published in the UK from 1963 to 1993), the *CP Newsletter* (published in New Zealand since 1949), and a range New Zealand Post's early *Stamp Bulletins* and more recent *Focus* magazine had been added to the website during the year. It was hoped that copies of all but the most recent issues of *Captain Cook* (published by the Christchurch Philatelic Society since 1972) would be added soon.

6. Report by the Editor of *The Kiwi* (Paul Wregglesworth)

The Editor noted that he had now served nearly 5 years in the role and again thanked members for the number, quality and variety of material submitted for *The Kiwi*. In 2017, for the first time, it had been possible to produce all six issues with 36 pages. While he tried to strike a balance in the type of material published, and relied largely on what was submitted, he invited members to say if their particular interests were not covered so that he could seek material from other sources. The current print run was for 200 copies, allowing a small surplus for new

members and publicity at fairs and exhibitions. The Editor, alluding to the very occasional gremlin that found its way into *The Kiwi*, concluded with a quotation from the English poet John Clare (1793-1864): "If life had a second edition, how I would correct the proofs!"

7. Election of Officers for 2018

The Chairman reported that there had been no new nominations and no existing Officers had indicated a wish to stand down. He therefore proposed that Officers be re-elected en bloc. This was agreed unanimously. The Officers for 2018 are therefore:

President	Keith Collins	Packet Secretary	John Hepworth
Chairman	John Stimson	Auctioneer	Brian Stonestreet
Secretary & Library Liaison Officer	Michael Wilkinson	North of England Group Secretary	Jack Lindley
Membership Secretary	Esmé Diamond	Scottish Group Secretary	Adrian Philbey
Treasurer	Paul Woods	Representative in New Zealand	John Watts
Editor of <i>The Kiwi</i> & Publicity Officer	Paul Wreglesworth	Examiner of Accounts	to be appointed

8. Other business

Paul Leonard, an adviser to the RPSL Expert Committee, wished to express his thanks to Terry Hancox for permission to use some of his plating studies in a presentation to the Third International Symposium on Analytical Methods in Philately held at the RPSL in October. At the invitation of Susan Smith, Chair of Research at the Smithsonian National Postal Museum in Washington, Paul was also preparing a paper on the subject and hoped to include more of Terry's work. Such initiatives had the added benefit of helping to bring the work of the Society and its members to the attention of a wider audience.

There being no other business, the meeting closed at 12 noon. The 67th Annual General Meeting will be on 24th November 2018.

New Zealand Society of Great Britain Packet Accounts for Year Ended 30 September 2017

Expenditure	£	Income	£
Payment to vendors	3,334.89	Brought forward	2,010.04
Insurance premium 2016-2017	686.84	Packet sales	4,930.48
Unpresented cheque from 2015-2016	689.91	Insurance from buyers	391.50
Secretarial expenses	59.21	Donation - mint GB stamps	55.54
Donation to Society	500.00	Unclaimed cheques	692.66
		Total income	8,080.22
Total Expenditure	5,270.85		
		Total credit	8,080.22
		Less expenditure	5,270.85
		Balance	2,809.37
		Cash at bank 30.09.16	2,806.65
		Stamps in hand	2.72
		Carried forward to 2016-2017	2,809.37
Audited and found correct			
(signed) John Atkinson 30.10.2017			

New Zealand Society of Great Britain

Income and Expenditure for Year Ended 30 September 2017

GENERAL ACCOUNTS	2015/2016 £	2016/17 £
Income		
Interest on Deposits	114.52	128.84
Receipts from the Packet Account	0.00	500.00
Auction		
- Sales	6,124.84	6,417.06
- less Vendor payments	-5,468.75	-5,740.67
Subscriptions received	4,238.55	4,325.68
Stratford Weekend		
- Income	6,048.70	0.00
- Costs	-5,870.75	0.00
Total Income	5,187.11	5,630.91
Expenditure		
Meeting costs	2,107.00	2,033.25
KIWI		
- Printing and Distribution	3,596.97	3,632.74
- Less advertising	-2,918.00	-2,487.02
Society Costs		
- ABBS Affiliation Fees	206.25	200.00
- Web Site and Officer Expenses	127.12	71.56
Total Expenditure	3,119.34	3,450.53
Surplus for the Year	2,067.77	2,180.38
	5,187.11	5,630.91
Balance Sheet		
Current Accounts	Brought Forward £	Carried Forward £
Deposit Accounts	19,758.41	21,716.18
	25,000.00	25,110.00
GENERAL ACCOUNT BALANCES	44,758.41	46,826.18
Movement on General Accounts	2,067.77	2,180.38
PACKET ACCOUNT		
In Year Movement in Balances	5.05	796.04
Packet Account Year End Balance	1,315.08	1,320.13
		2,116.17

"Presented and signed by Paul Woods, Treasurer 25/11/2016"



**Phone: (03) 579 5650. Fax: (03) 579 9894.
PO Box 5086, Springlands, Blenheim 7241.**

The web site is up and running allowing orders to be placed directly once you have registered. Currently there are over 12,000 stamps, covers, postcards etc on the site and all are illustrated.

Email us if you have any problems registering or navigating around the site. There is a search facility allowing you to search for your Interests. e.g. Entering the word 'Railway' brings up around 200 different items.

Website categories include:

- NZ definitive issues from Full Face Queens to the current issues.
- NZ Commemoratives from the 1906 Christchurch Exhibition onwards.
- NZ Health and Christmas issues.
- Booklets.
- Air mail stamps and covers.
- Life Insurance.
- Postage Due and Express stamps and covers.
- Postal fiscals and Revenue stamps.
- Cinderellas.
- Various miscellaneous issues and covers. Postal fiscals and Revenue stamps.
- New Zealand Postal History.
- New Zealand Postal Stationery.
- Antarctic stamps, Postcards and Postal History.
- Various British Commonwealth and Foreign Country's stamps and covers.

Below is a sample of what you can find on the site:



1906 Christchurch Exhibition aluminum postcard (rare).



1906 Christchurch Exhibition set with Exhibition cancels.



1868 Full Face Queen postage due cover.



Registered postal stationery cover to USA.

PUBLIC & POSTAL AUCTIONS STAMPS & POSTAL HISTORY

Each year we offer thousands of items for sale via our Public & Postal Auctions and Direct Sale Lists. **Phone, email or visit our web site for more information.**

- NEW ZEALAND STAMPS
- COLLECTIONS & ACCUMULATIONS
- ESTATE LOTS
- MARITIME MAIL
- ERRORS
- WORLD STAMPS
- FULL FACE QUEEN COVERS
- VARIETIES



2018 Colour Catalogue of New Zealand Stamps



- Colour Photos & Prices for every New Zealand Stamp from 1855-2018
- Many Price Changes

Phone, email or visit our web site for more information.

PHONE +64 9 522 0311

FAX +64 9 522 0313

hello@aucklandcitystamps.co.nz

www.aucklandcitystamps.co.nz

1 Ngaire Ave Newmarket | PO Box 99988 Newmarket Auckland 1149 New Zealand

Dealers in fine stamps
of the World, Specialists
in New Zealand and the
Pacific Islands.

Auckland City Stamps
Licensed Auctioneers

EST. 1974

