

# ***THE KIWI***

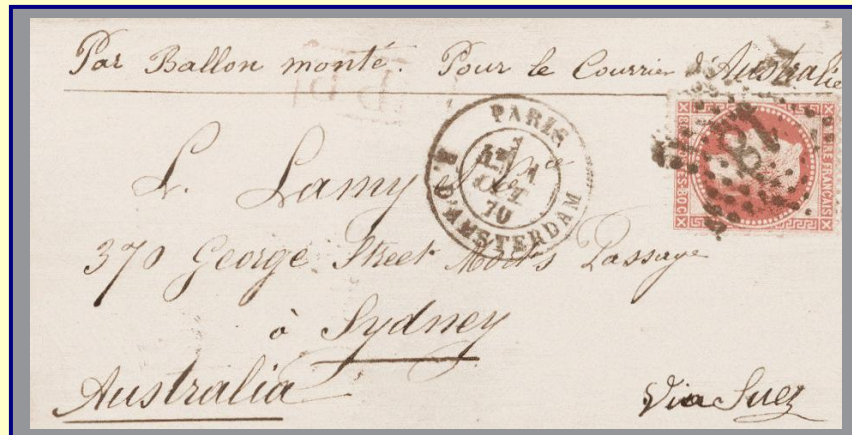
**JOURNAL OF THE NEW ZEALAND SOCIETY OF GREAT BRITAIN**



*Covers Addressed c/o High Commissioner for New Zealand, London  
(see page 121)*



## Superb material for the discerning



The above cover was an example of the world's first airmail and is the only known Paris ballon post cover addressed to Australasia. In 2009 Mowbrays Australia sold this 1870 Siege of Paris ballon monté cover for NZ \$238,625 – then a record Australasian price for a philatelic item.



The above 13 August 1855 cover from Auckland to Birmingham, England, bears a pair of New Zealand's very first 1d full-face queen stamps. Only three covers bearing 1d SG1 FFQs are known – this being the earliest recorded date. It was acquired in 2009 by John Mowbray for a client for NZ \$138,000.

Mowbray Collectables buys and sells collections, stamps and postal history. What can you offer? Contact our friendly staff in the first instance.

Mowbray collectables offers New Zealand and world collections, stamps and postal history in monthly postal auction catalogues – free samples available!

## Mowbray Collectables

Private Bag 63000, Wellington, New Zealand 6140

☎ + 64 6 364 8270

fax + 64 6 364 8252

[mowbray.stamps@xtra.co.nz](mailto:mowbray.stamps@xtra.co.nz)

[www.mowbraycollectables.co.nz](http://www.mowbraycollectables.co.nz)

## THE NEW ZEALAND SOCIETY OF GREAT BRITAIN

### Honorary President

Keith C. Collins

### Honorary Chairman

John Stimson

Mead Cottage

Boulter Lane, Maidenhead, SL6 8TJ

☎07710 336064

e-mail: john.m.stimson@gmail.com

### Hon. General Secretary & Librarian

Michael Wilkinson

121 London Road,

Sevenoaks, Kent, TN13 1BH

☎017-32456997

e-mail: mwilkin799@aol.com

### Honorary Membership Secretary

Mrs Esmé G. Diamond

9 Ashley Drive, Walton on Thames,

Surrey, KT12 1JL

☎01932-223280

e-mail: esmegdiamond@gmail.com

### Hon. Treasurer

Paul Woods

57 Grosvenor Drive, Whitley Bay

Tyne & Wear, NE26 2JR

☎0191 2534652

e-mail: pvdw1958@yahoo.co.uk

### Hon. Packet Secretary

Professor J. D. Hepworth

2, Carnoustie Close,

Fulwood, Preston, Lancashire, PR2 7ER

☎01772 861709

e-mail: j.d.hepworth@tinyworld.co.uk

### Hon. Editor of *The Kiwi*

Paul Wreglesworth

37, Blakelow Road,

Macclesfield, Cheshire, SK11 7ED

☎01625 420694

e-mail: kiwieditor@gmail.com

### Webmaster

Bob Clark

nzsgb1@googlemail.com

Website: www.nzsgb.org.uk

### Representative in New Zealand

John Watts

jlwatts463@gmail.com

## CONTENTS

Editorial	100
- 'The Kiwi' - Advertisers in this Issue	
- 'The Kiwi' Current Advertising Rates	
- 'NZSGB' - Current Subscription Rates	
Society News	101
- Philatelic Weekend - Stratford-upon-Avon 30 <sup>th</sup> Sept-2 <sup>nd</sup> Oct 2016	
Competitive Awards to Members	102
Forthcoming Meetings	103
- London	
- North of England Regional Group (and contact details)	
- Scottish Regional Group (and contact details)	
- Midland Regional Group (and contact details)	
Annual Society Auction - Notification	103
Notes of Meetings Held	
- London (May 2016)	
- North of England Regional Group (May 2016)	
Feedback on Previous Articles	108
The Society Web-Site as a Resource for Members	108
1934-5 Royal Visit (Andrew Dove)	109
1960 and 1967 Pictorial Definitives - Further De La Rue Archival Material Surfaces (Paul Wreglesworth)	114
1967 Pictorial Issue - De La Rue and the 'Delacryl' Process (Paul Wreglesworth)	116
1960 Pictorials - An Interesting Take on a New Issue	117
Early WW II Postal Censorship in New Zealand (Robert Clark)	118
The World's Rarest Meter Mark?	120
Covers Sent to London c/o the High Commissioner for New Zealand (Adrian W Philbey)	121
World Stamp Show - NY2016, 28 May-4 June 2016, Javitz Center, New York (Paul Wreglesworth)	126

*The Society is affiliated to: The Association of British Philatelic Societies  
the New Zealand Philatelic Federation  
and the Association of Scottish Philatelic Societies.*



**MOWBRAY COLLECTABLES**

**is proud to support the New Zealand Society of Great Britain  
as its major sponsor**

## EDITORIAL

First an apology if this issue of *The Kiwi* is late arriving. I was lucky enough to be able to attend the World Stamp Show in New York, which ran from 28 May to 4 June 2016, but some holiday tacked on to the end of the trip meant that I was enjoying myself instead of pulling the July edition together. Thanks to all the contributors and a special thank you to Michael Wilkinson for producing such comprehensive notes of the meeting held, in London, at the end of May - which I also missed.

Members will have seen the advance notice, in the May issue, of the auction of Derek Diamond's 2d Chalon and 1898 Pictorial collections. We all knew that Derek had some superb material and the catalogue for the auction at 'Spink' on 6 July confirms this. I know many members will hope to add at least one piece from this auction to their own collection but the catalogue itself should also find a place on your bookshelf.

Finally, our Philatelic Weekend at Stratford-upon-Avon draws closer (see the opposite page). I look forward to meeting many of you there so if you have not yet booked accommodation don't leave it too late.



### ***THE KIWI - ADVERTISERS IN THIS ISSUE***

ADVERTISER	PAGE
Mowbray Collectables	Inside Front Cover
Steven Zirinsky	113
Ashford Stamps Ltd.	113

ADVERTISER	PAGE
Classic Stamps Ltd.	Inside Back Cover
Auckland City Stamps	Back Cover

*"Please mention the NZSGB when you speak with our Advertisers"*

### ***THE KIWI - CURRENT ADVERTISING RATES***

	Full (single insertion)	Full (3 or more consecutive)	Half (single insertion)	Half (3 or more consecutive)	Quarter (single insertion)	Quarter (3 or more consecutive)
Full Colour	£90	£75	£75	£60	£50	£40

### ***THE KIWI - BACK ISSUES***

Copies of 2014 and 2015 issues of *The Kiwi* are available for purchase.

£2.50 (plus postage) per copy

Check the web site for content or contact The Editor

### ***NZSGB - CURRENT SUBSCRIPTION RATES***

Membership rates are £20 (within the UK) and £25 (overseas) - with printed copy of *The Kiwi*.

Members who prefer to receive an electronic version of the journal (*e-Kiwi*), downloadable from the Society's web-site, *as an alternative to the paper copy* pay £20 regardless of country of residence.

Payment can be made by various means including PayPal ('gift' option). Details from the membership secretary [esmegdiamond@gmail.com](mailto:esmegdiamond@gmail.com) or via the web-site.



## SOCIETY NEWS

### PHILATELIC WEEKEND 2016 - BOOK NOW!



#### HOLIDAY INN STRATFORD-UPON-AVON *30<sup>th</sup> September - 2<sup>nd</sup> October 2016*



The original block of rooms at the hotel has now been filled but we have been able to acquire a small number of additional rooms at the same favourable rate. These will be held until the end of July so please let Michael Wilkinson know as soon as possible if you require accommodation for the weekend.

**Bookings will be handled by the Society and NOT by the hotel.**

To reserve accommodation for the weekend a deposit of **£25 per person** should be sent to:-

Michael Wilkinson, 121 London Road, Sevenoaks, Kent, TN13 1BH

Cheques should be made payable to 'The New Zealand Society of Great Britain'.

For further details, or if you have any questions about the weekend, please contact Michael.

#### Programme

A number of sessions on specific subjects are planned and some displays have been invited to introduce and outline the topic. We are keen that those attending should have the opportunity to participate and, if you have material that fits into a session, we will do our best to accommodate you.

Planned topics are:

- Pacific Airmails
- Military World War II
- New Zealand Disaster Philately
- Focus on New Zealand Stamps

Anybody wanting to contribute to these sessions, please contact Andrew or Michael with a rough outline of content and number of sheets. Contact at: [dove697@btinternet.com](mailto:dove697@btinternet.com) or [MWilkin799@aol.com](mailto:MWilkin799@aol.com)

#### Raffle

A raffle will be held on the Saturday, which helps to defray some of the costs. Members have been most generous in previous years in securing items for prizes. If you can help in any way please contact Michael. If unable to attend, tickets may be obtained from Michael Wilkinson - £1.50 per ticket or 5 for £5.00.

#### Biennial Society Competition (16 Pages)

This will take place on the Saturday of the Society weekend in Stratford (October 1st). It would assist the Secretary (Michael Wilkinson) greatly if members intending to submit an entry would contact him by **September 28<sup>th</sup> 2016** with the title of their entry.

Members unable to attend may submit a colour scan/photocopy (16 sheets) of their entry and this must be with Michael by **September 28<sup>th</sup> 2016**. Contact details can be found on page 99 of this issue of *The Kiwi*.

Members are reminded that all material contained in an entry must be the property of the entrant.

***Put the dates in your diary now and start preparing your entry for the 16 sheet competition.***

## COMPETITIVE AWARDS TO MEMBERS

Congratulations to members who were successful at:

### WORLD STAMP SHOW-NY 2016, Javits Center, New York, 28 May - 4 June 2016

Member	Subject of Entry	Class	Frames	Mark	Medal/Award
Steve Schumann	New Zealand Postal Stationery 1876-1940	Championship	8		Nominated for the Grand Prix d'Honneur
Jim Shaw	New Zealand Postage Dues 1899 to 1951 - 1st, 2nd and 3rd Issues	Traditional	8	87	Large Vermeil
Bob Watson	Airmails from New Zealand to the United States 1930-1953	Traditional	1	82	(single frame)
Paul Wreglesworth	New Zealand - The Second Sideface Issue (1882-1900)	Traditional	8	94	Gold + SP (treatment)



*The World Stamp Show-NY 2016 Medal is custom die struck in antique bronze, measuring 2" x 3" inches and weighs almost eight ounces. The medal, designed by Niko Courtelis, features the World Stamp Show-NY 2016 logo on the obverse within a raised stamp border, while the back features a stylized magnifying glass that creates an area for medal recipients' names to be custom engraved. The medals are being minted by the Northwest Territorial Mint/Medallion Art Company using 900 tons of pressure at a production facilities in Northern Nevada.*

Congratulations to members who were successful at:

### Annual Congress of the Association of Scottish Philatelic Societies (ASPS),

Perth, 15-16 April 2016

Member	Subject of Entry	Class	Medal
David Stalker	New Zealand - A Study of the 1960 - 1967 Pictorial Definitives Counter Rolls	General Class - Post 1900	Silver
Elizabeth Nairn	Aotearoa's First Settlers	Best Display from the Host Society	

One of our younger members, Lachlan Philbey, entered the 'One Sheet - Junior Competition' at the Scottish Congress in Perth with 'New Zealand Health Stamps: 1929-1933'. He was unsuccessful on this occasion but we hope that this will not discourage him from trying again in the future.

Lachlan, is shown here (right) in front of his entry.



## FORTHCOMING MEETINGS

### NEXT MEETING OF THE SOCIETY

The next meeting of the Society will be held on Saturday **30 July 2016**

at the **Union Jack Club**, Sandell Street, London, SE1 8UJ

starting at 14:00

Topic for the meeting: **Postal History of the 1960s**

- **Paul Wreglesworth** will lead the meeting and, using examples from the 1960 Pictorial issue, discuss ways of researching and displaying postal history from a particular period.

Members are invited to bring any items showing postal usage during this decade.

To aid planning please let the Hon. Secretary know if you have material for display.

*A committee meeting will be held in the morning, starting at 11:00*

### NORTH OF ENGLAND REGIONAL GROUP

The next meeting of the North of England Group will be held on Saturday **10 September 2016** at St. Luke's Church, Lodge Road, Orrell starting at 12:30. Members to display items of interest.

Group Contact: - Jack Lindley ☎ 0161 705 1074

e-mail: lindleyjack@aol.com

### SCOTTISH REGIONAL GROUP

The next meeting of the Scottish Group will be on Saturday **8 October 2016** starting at 12:30 and will be hosted by Bob Clark in Stirling. Contact David Stalker for further details

Group Contact: - David Stalker ☎ 0141 812 6653

e-mail: davidmstalker@yahoo.co.uk

### MIDLAND REGIONAL GROUP

The next meeting of the Midland Group will be held on Saturday **29 October 2016** at the usual venue, St. Anne's Church Hall, behind the Church, Park Hill, Moseley, Birmingham B13 8DU.

New visitors, who are most welcome, please note the new postcode if relying on a satnav for guidance.

Group Contact: - Ian Samuel ☎ 0121 449 0849

### ANNUAL SOCIETY AUCTION

A reminder to all members that the Annual auction will be held at the November meeting of the Society. Please look out any unwanted items and forward details so that they can be included in the catalogue. Without philatelic material to sell, there will be no auction. Full details were published in the May issue of *The Kiwi*. Descriptions of lots should be sent to: [dove697@btinternet.com](mailto:dove697@btinternet.com)

# MEETINGS HELD

## NOTES OF THE MEETING HELD, IN LONDON, 28 MAY 2016

The morning session was for “items of interest”, and there was plenty. **Lewis Giles** began with a cross-written entire from a Charles Hursthouse in New Plymouth (postmarked 2 May 1848) to his father, also Charles Hursthouse, in Beccles, Suffolk (arrival 1 November), extolling the merits of Taranaki for colonisation (Figure 1a). The weight was 2oz, so the sender paid 8d for postage as far as Sydney, and the recipient paid 2/- for the item to complete its voyage to the UK. The cross-writing was in black and red, making it marginally less difficult to read than if it had all been the same colour (Figure 1b). Of added interest was the fact that another Charles Hursthouse, nephew of the letter writer and a civil engineer in the New Zealand Public Works Department, was briefly held hostage in 1883 by Maoris led by Te Mahuki while surveying a possible route for the North Island Main Trunk Railway. This became known as the Hursthouse Outrage.



**Figure 1a and 1b:** 1848 letter from Charles Hursthouse (left) with 'cross-writing' in black and red (right).

(images reduced)

**Brian Stonestreet** showed a block of 6 of the 3d vermilion from the QEII definitive issue with the wide (5½mm) setting of the 2½d surcharge applied in 1961, and a recent addition to his collection of the 1975 Roses issue - a block of 8 of the 3c value from the only known imperforate sheet.

**Andrew Dove** sought information about a postcard issued by the 'Public Bodies' and Children's Princess' and designated 'N<sup>o</sup> 3', presumably in a series, exhorting people to “remember that the slightest news from home is welcome at the front”. The card (Figure 2) has 'New Zealand' written in pencil on the back, but nothing further is known.



**Figure 2:** Can anyone shed light on this mystery postcard.

(image reduced to 60%)

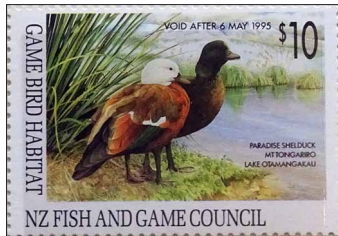
**Paul Leonard** used some large blocks of Health stamps, including the 1946 'Soldier' issue, to illustrate a technique using equipment made by Foster and Freeman of Evesham to identify fake documents such as passports and banknotes. The Expert Committee of the Royal Philatelic Society, London (RPSL) uses the equipment to spot differences between stamps, whether due to flaws in the printing or fakery by forgers. Precisely matched photographs were taken of a genuine and a suspect stamp, sometimes at a variety of wavelengths, and when these were viewed in quick succession any points of difference appeared to flicker and could be noted for further study.



**Paul Woods** displayed a very large pre-printed cover sent airmail on 5 June 1941 from Wellington to the New Zealand Shipping Company office in London. The postage affixed was an amazing £9 15s 6d, corresponding to an item weighing 17oz at the then rate of 5s 9d per ½oz.

**Michael Wilkinson** concluded the morning session with NZ Post's latest lenticular offering, the three \$5 stamps issued on 4 May 2016 to mark the Queen's 90th birthday. If tilted correctly, each stamp shows three different scenes from her life.

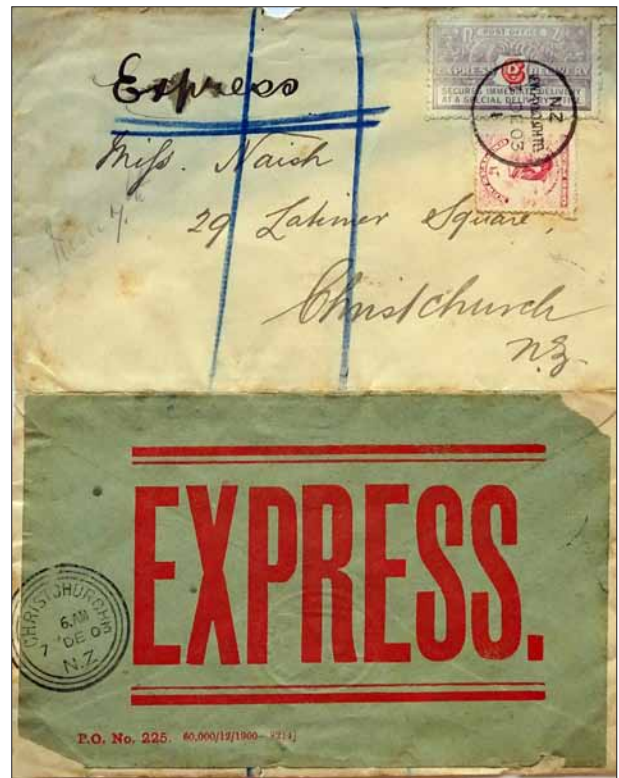
The subject for the afternoon was "Back of the Book – and Beyond!".



**Figure 3:** The 1995 \$10 Game Bird stamp.

**Brian Stonestreet** began with the \$10 Game Bird Habitat stamps (Figure 3) issued annually by the *New Zealand Fish and Game Council* since 1994 (though the United States started the similar Federal Duck Stamp programme as long ago as 1934). The stamps, which are revenue rather than postage stamps, serve to validate game bird hunting licences and as a partial receipt for the full licence fee, which is currently \$92 for adults. \$2 from the sale of each stamp goes towards habitat protection. Initially the stamps were issued in sheets of 20 or 25, decorative sheetlets and booklets, and since 2000 also in miniature sheets. Limited edition artist's prints have also been issued. NZ Post now manages the stamp programme on behalf of the Fish and Game Council.

**Andrew Dove** displayed stamps, covers and labels used for the Express Delivery service that operated between 1901 and 1941. As soon as letters and parcels reached the Delivery Office they would be taken by messenger to the addressee, up to a distance of three miles. The fee, in addition to normal postage, was 6d for the first mile and 3d each for the second and third mile, so the maximum fee was 1/-. The New Zealand Post Office hoped that some other countries would accept Express items on a reciprocal basis but, when most did not, the service was limited to internal mail only. Initially items using the service had simply to be marked 'Express Delivery' and blue vertical lines drawn across the front and back, but in February 1903 a 6d stamp showing Maori carvings and inscribed 'Secures Immediate Delivery at a Special Delivery Office' was issued. Use of the stamp was not compulsory and it was also valid for normal postage. It remained in use for 35 years, being superseded in August 1939 by a new design showing a motor car. The Express Delivery service was suspended at the end of 1941, so use of the stamp between then and 1948, when the stamp was withdrawn, is probably philatelic.



**Figure 4:** A 1903 Express cover with large P.O. label.  
(image reduced)

Andrew's display included examples of the first (1903), second (1926) and third (1936) printings of the Express Delivery stamp and an early example of its use on a cover dated 3rd December 1903 from New Plymouth (Figure 4). The cover, also bearing a 1d Universal stamp for normal postage, took 4 days to reach Christchurch Post Office but was, presumably, then delivered immediately. The cover also carries a giant 'Express' label, wholly covering the back of the envelope. Another envelope, bearing a hand-made Express label, a 1d Dominion stamp for postage and a 6d George V stamp for Express Delivery, had contained a letter from 21 year old Bert Oliver Stokes at Featherston Military Camp posted on 21st July 1916 to his mother in Wellington. He maybe hoped this would arrive before he sailed 5 days later with the New Zealand Field Artillery to fight at Passchendale. He survived and died, age 99, in December 1994, one of New Zealand's last links with the Great War.

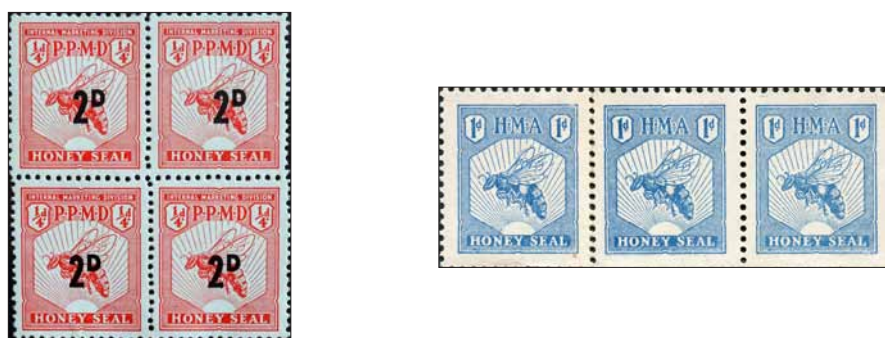
Andrew concluded with some questions, a key one being how did staff at the Post Office from which an Express item was sent know what fee to charge, or even whether an item was eligible for the Express service, since they would not generally know the distance from the Receiving Office to the addressee? What was the Receiving Office supposed to do if they received an underpaid, overpaid or ineligible item?

**Paul Woods** displayed further Express delivery items, including evidence that when designing the stamp to be issued in 1939 James Berry had relied more on pictures of a *Dinky* toy (No. 34a - Royal Mail Air Service Car) and a streamlined *Morris 8* van than on the photograph of a *Chrysler* coupe with which he had been supplied.



**Figure 4:** Did a 'Dinky' toy provide inspiration for James Berry's 1939 Express stamp?

Paul's main display covered a great range of revenue stamps used to pay fees or collect taxes. Honey Seal stamps (Figure 5) were introduced in 1938 to collect a tax levied on honey, initially at the rate of ¼d per 8oz and, from 1953, ½d per 8oz. The stamps, produced by the Government Printer, were issued in denominations of ¼d, ½d and 1d for smaller quantities of honey and 2½d, 5d and 2/- for tins. In 1953, to provide a 2d value and further supplies of the 5d, existing stocks of the ¼d, ½d and 2½d stamps were overprinted. Slightly smaller 1d and 2d stamps were issued in 1956, with the 1d value also available in coils. In the 1950s Honey Seal stamps were largely superseded by seals imprinted on the lids of cardboard containers.



**Figure 5:** Honey Seal stamps, 2d overprinted on ¼d, from sheet (left) and 1d from coil strip (right)

A range of Savings stamps was displayed: in 1901 a ¼d discount stamp, redeemable in multiples of 1/- at Post Offices, was issued to replace outlawed trading stamps; and a 1d Thrift stamp was issued in 1934 and a 6d National Savings stamp in 1942 to encourage saving, especially by children.

Between 1936 and 1944 Fruit Inspection Fee stamps, in denominations of ½d and 1d, were used to defray the cost of monitoring grading standards for pip fruit.

The New Zealand Post Office had a monopoly on the carriage of letters but not newspaper and parcels, so these could be sent by rail. The Railways Department issued Newspaper and Parcel stamps in 1890 and a new design for parcels in 1925. Values went up to 1/- and 5/-, though these higher values are rare. Later reprints of several values ("Brodie" reprints) also exist.

Ordinary postage and fiscal stamps overprinted PASSPORT FEE were used as receipts for the renewal of passports between 1926 and 1939 (Figure 6). The fee was initially 1/- for each year of renewal, up to a maximum of 5, but increased to 2/- in 1931. The stamps overprinted were the 1/- and 2/- George V stamps,

several values of the Queen Victoria Long Type and Arms Type fiscals and, only a year or so before use of Passport Fee stamps ceased, the 2/- Captain Cook value from the 1935 Pictorial issue.



Figure 6: A QV long type fiscal and George V definitive overprinted 'Passport Fee'

**Michael Wilkinson** concluded proceedings with a range of unpaid and underpaid postcards and covers within, to and from New Zealand bearing various markings indicating the sum to be paid and, in some cases, postage due stamps to that value. A capital "T" (tax) mark in a lozenge or circle indicated that postage had been underpaid and, for international mail, the amount to pay (usually double the deficiency) was shown in the notional currency of UPU gold centimes. The receiving country converted this to its own currency to determine the charge to be levied on the recipient.

## NOTES OF THE NORTH OF ENGLAND GROUP MEETING, 14 MAY 2016

**Mike Hanson** displayed some modern postal stationery, Cinderella stamps on the theme 'Prevent Forest Fires' and a range of covers showing postage due stamps.

**Paul Wreglesworth** exhibited the 1960 Definitive Issue, middle values (9d - 2/-), showing cylinder and imprint blocks together with colour shift varieties, missing colours, errors of perforation, flaws and retouches.



2/- maori carving with buff colour partially missing

**Stuart Potter** had a selection of airmail covers with Arms stamps, from 1s 3d to £1, used for postage.

**John Atkinson** described the hologram stamps, issued by New Zealand Post, to commemorate the 90th birthday of HM QEII. This was followed by discussion of the history of RMS *Aorangi* and SS *Mariposa*. John also showed a range of 1935 Second Pictorials used on different illustrated first day covers.

**Peter Williams** showed a nice pair of the 5d 1960 Pictorial stamp, showing the error of missing perforating pin from the comb head, and a Victorian lettercard.

**Harold Howard** displayed a selection of flaws on the 1d Dominion stamp on covers to various countries.

**Jack Lindley** entertained with a selection of 19th century 'inwards' covers from Great Britain and military mail from both World Wars.



## FEEDBACK ON PREVIOUS ARTICLES

Thanks to all members who have contacted me with comments on articles published in *The Kiwi*. It is reassuring to know that somebody is reading the journal!

**Page 89, May 2016 issue:** Alan Tunnicliffe points out the 40c Standard Post, Canterbury, stamp attached to the part air mail cover was not valid for overseas mail and that the \$1.80 in NZ Post stamps added is not making up the rate but paying the whole rate for a large size letter to Australia.

**Page 94, May 2016 issue:** Alan also spotted that the signature on Adrian Philbey's pigeon post item was in fact Lelievre and not Lelieves as suggested by the translation.

It was translation from the original French that concerned Gerald Elliott who felt "*.....un timbre servant à l'affranchissement des Pigeon-grams .....*" should be translated as "*.... a stamp having been used to pay for some pigeon-grams....*" and might suggest that a used stamp was originally attached to the letter, the mint stamp being added at a later date.

Perhaps one of our French speaking members could comment on this as my initial response to Gerald was that I felt the original French suggested "*.. a stamp (intended to be) used for payment....*". As was pointed out in the article it was noteworthy that the letter was dated three days prior to the triangular stamps officially being placed on sale. So the enclosing of a used stamp would be even more of a surprise unless of course it was one of the earlier issues.

Further comment would be most welcome.

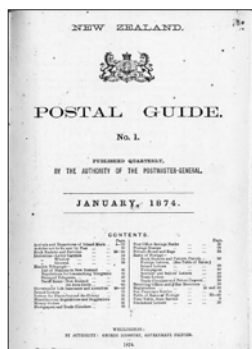
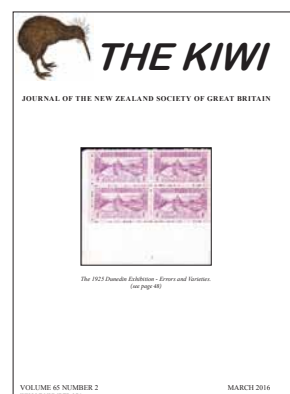


## THE SOCIETY WEB-SITE AS A RESOURCE FOR MEMBERS

### *The Kiwi*

As promised, in response to requests from members, more issues of the journal have been placed on the web-site and can be accessed as follows:

- \* Volumes 1-50 (1952-2001) are available to anyone. 51-60 to be added later.
- \* Volume 61-64 (2012-2015) available to members only. ***This requires a password which can be obtained by contacting the editor of The Kiwi.***
- \* Volume 65 (Current Year) - available to *e-Kiwi* subscribers only.



### *Research Documents*

We have begun to place some original source documents on the web-site which may be of assistance to members undertaking research in to the New Zealand Post Office and early postal rates and routes. We hope to add to this in the future. Documents available now are in three categories:

- \* Statutes relating to the early New Zealand Post Office.
- \* *New Zealand Gazettes* relating to early postal rates.
- \* New Zealand Postal Guides relating to postal rates.



# THE 1934-35 ROYAL VISIT

*Andrew Dove*

## Introduction

Royal visits to New Zealand have become almost commonplace in the modern era. Queen Elizabeth II became the first reigning monarch to visit the country shortly after her accession in 1953 and, since then, has visited on nine further occasions.

In the late nineteenth and early twentieth century, it was a very different matter. The first royal visitor to New Zealand was the Duke of Edinburgh, second son of Queen Victoria, who arrived in Wellington in 1869 in command of HMS *Galatea*. There was then a gap of 32 years until the Duke and Duchess of Cornwall and York (later King George V and Queen Mary) visited the Colony for 15 days in 1901. They were followed in 1920 by the future King Edward VIII who stayed for four weeks as part of a tour of the Empire. In 1927, the Duke and Duchess of York (the future King George VI and Queen Elizabeth) spent four weeks travelling the country although the Duchess' trip was cut short by tonsillitis and she spent time in Nelson recovering while the Duke toured the South Island.



**Figure 1:** *March past by the pupils of Wellington College.*

*(Creator unknown: Photograph of teachers and school cadets at Wellington College, marching past the visiting Duke of Gloucester. Ref: PAColl-8505. Alexander Turnbull Library, Wellington, New Zealand. <http://natlib.govt.nz/records/23074693>)*

After a gap of another seven years, the next visitor was Prince Henry, Duke of Gloucester, the fifth in line to the throne. Prince Henry was the third son of King George V and the younger brother of King Edward VIII and King George VI. He served as a military officer until he retired from the active list in 1936 when he assumed a greater role in royal duties to assist his elder brother. He rejoined the Army at the beginning of the Second World War and served in France as the Chief Liaison Officer with the British Expeditionary Force. After the war, he returned to Australia as Governor-General between 1945 and 1947. He died in 1974.

Originally, the visitor was to be Prince George, Duke of Kent, fourth son of King George V. He had, however, already completed a strenuous tour of South Africa that year and the King felt that it would be too tiring for him to undertake a further journey. Prince Henry was substituted and he travelled via Australia where he stayed for about nine weeks and participated in the celebrations of the Centenary of the State of Victoria.

The itinerary was, of course, carefully planned. The complete itinerary may be viewed through *Papers Past in Press* (Vol. LXX, Issue 21274, 20 September 1934, Page 8).

The Royal Party arrived in Wellington on December 15 and, amongst other events, were treated to a march past by the pupils at Wellington College during their four day stay (Figure 1).

On leaving Wellington, the visitors first destination was Hastings. They travelled by train for most of their stay in New Zealand although they made use of the H.M.A.S. *Australia*, in which they had travelled from Australia, to travel between the islands and from Nelson to Port Lyttelton.

Some postal items are identifiable as coming from previous Royal visits but it was for Prince Henry's visit in 1934/5 that particular arrangements were put in place by the New Zealand Post Office.

### Special Arrangements

The Royal Train included a special mail sorting coach which was equipped with a special 'C' class canceller (Figure 2).

Startup records that the canceller was used between 19 December 1934 and 4 January 1935 in the North Island and between 7 January 1935 and 14 January 1935 in the South Island (Ref. 1).

Mail was only accepted for transmission from the train if it originated from the Duke of Gloucester or a member of his entourage. The restriction was strictly enforced and no philatelic mail was processed although a comment in *The Mail Coach* notes that some unaddressed envelopes exist (Ref. 2).

Envelopes franked with the mark are unusual and it is likely that less than 50 pieces of mail received the cancellation. The recent auction sale of Len Jury's collection contained six examples which were dated 20 December, 24 December, 4 January, 10 January, 13 January and 14 January (Ref. 3).



**Figure 2:** 'C' Class canceller used on the Royal Train, dated 12 Jan, when the party was travelling between Dunedin and Invercargill.

## Telegrams

Arrangements were also made to print envelopes to carry telegrams sent by the Royal Party (Figure 3).



**Figure 3:** Unused Telegram Envelope and (inset) the cachet on the reverse.

The use and availability of these envelopes is unclear. Very few have survived: the sale of Len Jury's collection included two unused examples and what was said to be the only recorded surviving used envelope and telegram form.

The example shown here presents a bit of a mystery. It appears not to have been used and has no delivery address: it bears a manuscript note 'Victory used' on the front suggesting that it may have been used to store stamps at some time. On the reverse is a strike of the Hamilton Chief Post Office canceller dated 15 JAN 1935 (Figure 3 - inset). There also appears to be scribbled manuscript initials in red crayon overlying the cachet. This mark overlies the tip of the flap and the appearance of the flap suggests that the envelope has been sealed and opened at some stage. One possibility would be that these special envelopes were distributed around the country, possibly to the larger offices, on the off chance that a member of the Royal Party wished to send a telegram to that particular location although this seems a little extravagant. Any further information or thoughts would be most welcome.

### Special Airmail Flights

Such was the requirement for rapid and effective communications with the Royal Party that a number of special airmail flights were also undertaken. As with mail sent from the train, only official items were carried and, consequently, examples are scarce.

The first flight was on 19 December 1934 between Auckland and Napier (Ref. 4) and this was followed by eight further flights.

The letter shown on page 112 (Figure 4) was flown on 12 January. The envelope was signed by the pilot, Flight Lieutenant S. Wallingford, and left Auckland at 08:30. On arrival in Invercargill, the letter was taken to the train where the Royal Party was embarking and was franked on the reverse with a receiving Royal Train cancellation at 19:30 on the same day. Considering that the top speed of the Fairey IIF used was about 190 km/hr and the distance from Auckland to Invercargill is 1,184 km, it must have been quite an endurance feat to complete the journey.





Figure 4: The only recorded surviving envelope flown from Auckland to Invercargill on 12 January 1935.

On 21 January, at the end of the tour of the country, the Royal Party rejoined H.M.A.S. *Australia* at Port Lyttelton and sailed to the Bay of Islands to enjoy some fishing before leaving for Fiji on 29 January.

Some further flights carried mail to and from the ship whilst they were anchored in the Bay of Islands. At the end of their stay, on 28 and 29 January, there was communication with Wellington. On 28 January, Flight Lieutenant S. Wallingford flew mail from Wellington to Auckland where he handed over to Flight Lieutenant L.J. Sylvester of the Royal Australian Navy. It seems that Sylvester flew a seaplane to allow direct delivery which would explain why Sylvester did not complete the journey. On 29 January, the procedure was reversed with Wallingford completing the journey to Wellington from Auckland (Figure 5).

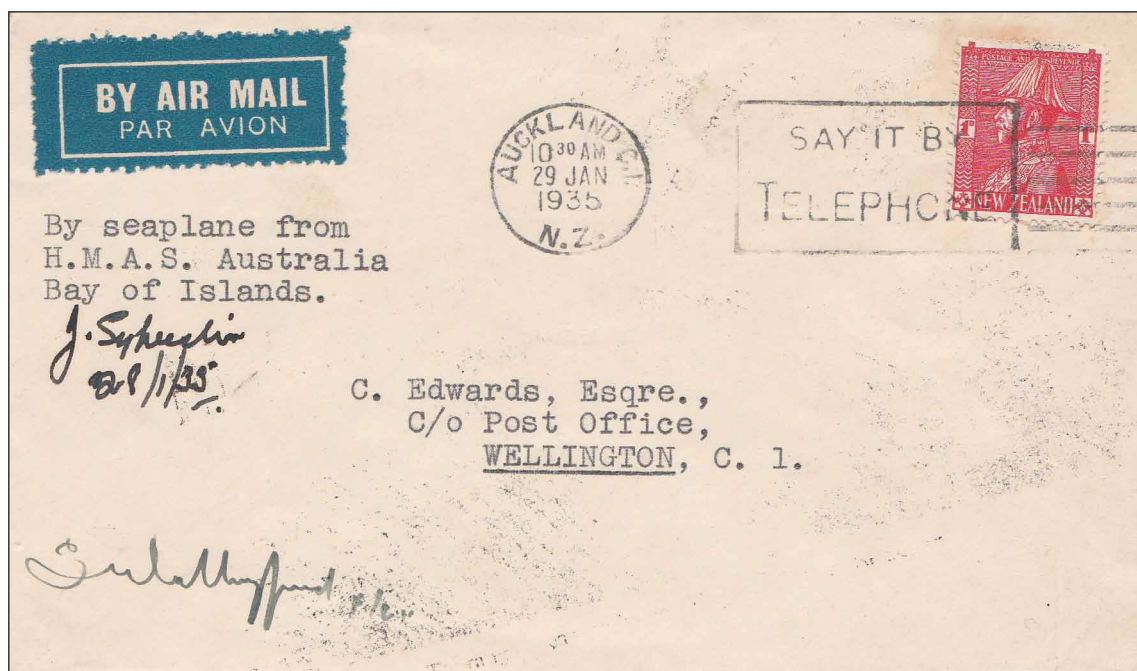


Figure 5: Envelope carried by airmail on 29 January 1935, the day of the Prince's departure.



## Conclusion

During the 37 days that he was travelling the country, the Duke visited every part from the Bay of Islands to the East Coast, Invercargill, Mount Cook and the West Coast of the South Island. By all accounts, the tour was a great success. For example, The Auckland Star of 20 December 1934 (Vol. LXV, Issue 301, P. 8) records that Gisborne had crowds thronging the town awaiting the arrival of the Duke of Gloucester and that this included 2,000 school children.

No doubt, the success was due to the careful planning that had been undertaken although consideration of the special postal arrangements remind one that this was a time, long gone, when the importance of things being done properly was greater than them being done as speedily and cheaply as possible.

## References:

1. Startup RM *New Zealand Post Offices*, p 209, Pub. Postal History Society of New Zealand, ISBN 0-908588-42-9, 1993.
2. Anon. 'Royal Train, New Zealand' *The Mail Coach*, vol.10 no.12, p231, Aug. 1974.
3. Anon. *New Zealand The Len Jury Award-winning collections of Postal History, Stationery, 1913 Auckland and 1920 Victory Issues*, Lots 2376-2390, pub. Spink, 7 October 2016.
4. Stapleton, James A., *The New Zealand Airmail Catalogue*, p21, pub. The Air Mail Society of New Zealand, Ed., Shand M., ISBN 0 9597787 8 0.



# NEW ZEALAND

Ask for your free  
Postal Auction catalogue!

Specialised, simplified, postal history, Chalons,  
revenues, errors, all manner of NZ material,  
as well as worldwide!

Email [ashford@stampsale.com](mailto:ashford@stampsale.com) (or mail/phone/fax)



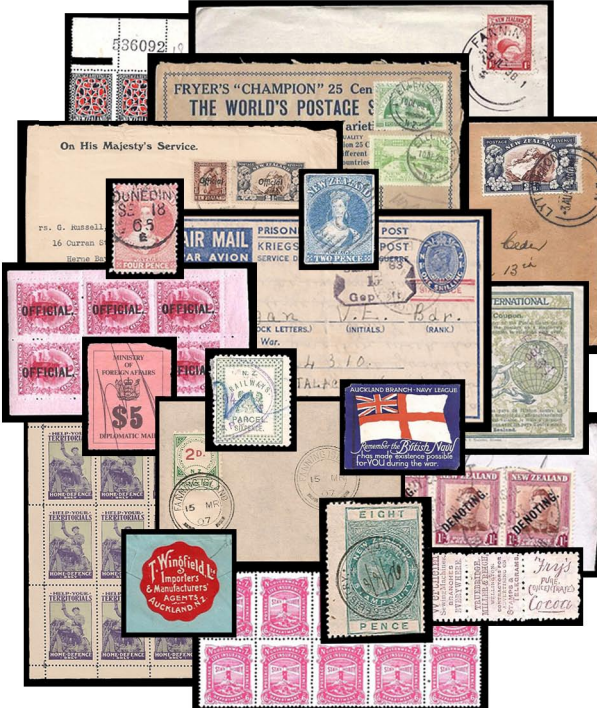
## Ashford Stamps Ltd

P.O. Box 9845, Newmarket, Auckland 1149, New Zealand.  
Email [ashford@stampsale.com](mailto:ashford@stampsale.com)  
Fax +64 9 520 5947 Telephone +64 9 520 5946  
Managing Director: Brian Rumsey, member NZSDA, APS

# STEVEN ZIRINSKY

MEMBER PTS, APS, NZSDA, APTA, PPS

## NEW ZEALAND



PO BOX 230049, Ansonia Station, New York, NY 10023 USA  
[szirinsky@cs.com](mailto:szirinsky@cs.com)

[www.zirinskystamps.com](http://www.zirinskystamps.com)  
[@ZirinskyStamps](https://www.facebook.com/ZirinskyStamps)

# 1960 AND 1967 PICTORIAL DEFINITIVES

## FURTHER DE LA RUE ARCHIVAL MATERIAL SURFACES

*Paul Wreglesworth*

In the last issue of *The Kiwi* (Ref 1) I described some interesting items, including a block of the 3d Kowhai with sideways watermark, which I suggested probably came from the De La Rue archives. The material was acquired by the current owner around 1999/2000 and he has identified a number of other pieces which add weight to this theory.



**Figure 1:** Lower part of an uncut booklet sheet for the 1c Karaka stamp, showing cylinder numbers 1B1B1B1B.

(image reduced)

A further part of the uncut booklet sheet for the 1967 1c Karaka stamp is shown (Figure 1) with the cylinder numbers 1B1B1B1B in the lower margin.

The accumulation includes a number of full sheets including the 6d Pikiarero. The lower part of the sheet is shown below (Figure 2). This has the numbers '0357/2' written, in biro, at two places in the lower selvedge. The significance of these numbers is not clear.



**Figure 2:** 6d Pikiarero, from cylinders 111, with 0357/2 handwritten in the lower selvedge of the sheet.

(image reduced)





**Figure 3:** 4d Puarangi, from cylinders 1111, with signature and date in the lower selvedge, OFDL 0689/2 handwritten in the lower selvedge of the sheet.

(image reduced)

A sheet of the 4d Puarangi (Figure 3) shows a signature, 'C.C. MacDonald', and a date, '5/10/64', below Row 20, Stamp 2 and Row 20, stamp 11. In addition, written in the lower right corner of the sheet, in a different hand, is 'OFDL 0689/2'. This is seen, to better effect below (Figure 4).



**Figure 4:** Detail from the lower right corner of the 4d sheet.

The inscription 'OFDL 0689/2' is similar to figures seen on other De La Rue production documentation (Ref. 2). Part of a 'Security Control Receipt', used on this occasion by the Photogravure Department, is shown below (Figure 5). This particular form (used in 1959) is inscribed OFBN followed by, what is presumably, a unique number, 764. Separate items on the form are assigned additional numbers. The numbering system on the 4d sheet here is similar.

What I find intriguing is that this sheet is signed and dated October 1964 yet has been printed from cylinders 1111. There were two blue cylinders, both numbered 1, and one numbered 3 (Ref. 3), used in cylinder combinations 1111, 1221 and 2333. and close examination of flaws indicates that this sheet is from the very first blue cylinder 1.

SECURITY CONTROL "F" RECEIPT		No. OFBN 764	
GREY, RED AND BROWN COPIES WILL BE DETACHED BY ORIGINATOR, SENT TO RECEIVER, WHO WILL SIGN ALL COPIES AND SEND:— GREY COPY TO SECURITY CONTROLLER, RED COPY TO ORIGINATOR, BROWN COPY TO BE RETAINED			
From: PHOTOGRAVURE DEPT.	NUMBER OF	AMOUNT OF	

**Figure 5:** Upper portion of a De La Rue 'Security Control Receipt' with numbers in the top right corner.

Cylinders 2333 were in use when De La Rue changed to using chalky paper in 1965. So why, as it would seem, was a printing made from the very first blue cylinder, in October 1964, shortly before moving to chalky paper? The inland postage rate was increased, from 3d to 4d, on 1 October 1964 so it is probable that further supplies of the 4d value would have been produced around this time. If anyone has any thoughts on the subject please get in touch.

## References:

1. Wreglesworth P., '1960 Pictorial Definitives - 3d Kowhai with Sideways Watermark', *The Kiwi*, vol.65, no.3, pp74-75, May 2016.
2. Wreglesworth P., 'Chambon - more than just a perforation', *New Zealand Stamp Collector*, vol.84, no.4, p112-116, December 2004.
3. Naish D.E.G., & McNaught K.J., *The Postage Stamps of New Zealand*, Vol.VI, p59, pub. The Royal Philatelic Society of New Zealand, 1977.

# 1967 PICTORIAL ISSUE - DE LA RUE AND THE 'DELACRYL' PROCESS

*Paul Wreglesworth*

In January this year a number of De La Rue proof items were sold by the auction house, Universal Philatelic Auctions (UPA). The majority of the lots were Christmas issues and a number of these were reproduced in the March issue of *The Kiwi* (Ref. 1), by kind permission of Andrew McGavin, Managing Director of UPA. Two further items, from this sale (Auction 60), are shown below (Figure 1). These were, respectively, lot 16568, (left) 8c, National flag, est. £300, rel. £378 and lot 16570 (right) 20c, Maori rock drawing, est. £300, rel. £380.



**Figure 1:** De La Rue 'Delacryl' proof for the 8c [D/159], dated 28<sup>th</sup> Feb 66 (left) and for the 20c [D/178] dated 25<sup>th</sup> Feb 66 (right).

(images reduced)

De La Rue and Harrison & Sons retained their contract for the values that they had produced for the 1960 issue so it is interesting to see proposals from De La Rue for the production of the 8c and 20c stamps which, as 9d and 2/- values respectively, had been printed by Harrisons.

The two proofs produced by De La Rue are labelled 'Delacryl' alongside the equivalent stamp from Harrison & Sons labelled 'Photogravure', the process used by both firms to produce stamps for the 1960 issue. But what is, or was, 'Delacryl'?

According to De La Rue's publicity literature from the time, "'Delacryl' is the only process designed with stamp production in mind. It was devised by De La Rue's designers, scientists engineers and printers, drawing on over 100 years' experience of security printing, to offer faithful interpretation of any design idea".

It was in fact an enhanced offset lithographic process. At the time companies such as BASF and Dupont were developing acrylic photo-polymer printing plates which, it was thought, together with high quality inks, with greater colour saturation, that De La Rue were producing in their laboratories could form the basis of a new printing process, to be termed 'Delacryl', which would in turn give a competitive advantage in stamp printing. 'Delacryl' was intended to give clarity and quality, giving clean hard-edged images with areas of high quality, flat colour. "One of the secrets" De La Rue claimed "is the unbroken line and fine screen. This gives 90,000 dots per sq. inch (Figure 2) so enriching the pictorial quality of small scale work". Unfortunately they found that these plates could only print reliably in screen rulings up



**Figure 2:** From De La Rue publicity, an image showing an enlarged area of a stamp, intended to show the quality achievable with the new 'Delacryl' process.



to 150 lines per inch whilst the competitors' processes were using 300 lines per inch. 150 lines per inch is much coarser than 300 and consequently the dot structure was visible to the naked eye (Ref. 2). Although the new process was ultimately doomed to failure the publicity material was already with potential customers and De La Rue did produce material for a number of Postal Authorities. These included the UK Post Office, for whom they used the process for the 1969 Post Office Technology and 1970 Commonwealth Games issues. New Zealand's 1970 Health issue, the Christmas stamp of the same year and the 25<sup>th</sup> Anniversary of the United Nations issue are described, in the Campbell Paterson catalogue, as having been produced by the 'Delacryl' process. Stanley Gibbons' catalogues simply refer to lithography as the method of printing.

De La Rue abandoned the 'Delacryl' process and appear not to have renewed any trademarks they held as, today, web searches for the name only return a range of paints marketed by the Brazilian company, Tinta Iquine Ltda. (Figure 3).

The technology was not totally rejected and Harrison & Sons were introduced to a related process, apparently by a new employee at their Hayes facility who had worked for De La Rue, which they termed 'Harricryl' This was based on 250 lines per inch ruling. which was indistinguishable to the eye from the 300 lines. and tones were less liable to 'clog in' on printing plates available on the market at the time. It is suggested that House of Questa's later 'Super-Litho' process was derived from the early work of De La Rue (Ref. 2).



**Figure 3:** 'Delacryl' lives on in the name of a range of Brazilian paints.

## References:

1. Wreglesworth P., 'Christmas Issues - De La Rue Proofs', *The Kiwi*, vol.65, no.2, pp42-44, March 2016.
2. Morgan G., "Delacryl' and the previously unknown 'Harricryl'", *Dummy Stamps*, Issue 5, pp4-5, Summer 2007.

## 1960 PICTORIALS - AN INTERESTING TAKE ON A NEW ISSUE

In 1959 the designs for the new pictorial stamp issue, which was to feature native flora and tourist attractions as well as aspects of maori culture, were announced. They were not universally popular and the *New Zealand Herald* chose to publish some alternative images (see below). Maybe some of our New Zealand members recall how these 'alternatives' were received at the time!



## EARLY WWII POSTAL CENSORSHIP IN NEW ZEALAND

*Robert Clark*

New Zealand entered WWII at 9.30 p.m. New Zealand time on 3 September 1939. War was expected and on 22nd June 1939 George McNamara had been approved for the office of the New Zealand Controller of Censorship by the Council of Defence. His appointment was announced on 2 September 1939 (Ref. 1).

Initially, censorship offices were opened at Auckland, Wellington, Christchurch and Dunedin and censor numbers were attached to each. An extensive list of numbers and their associated offices has been provided by Startup and Lablonde (Ref. 2).

Censorship started immediately. The cover shown below (Figure 1) shows a cover to London postmarked on 5th September 1939 that was opened by the censors and resealed with a blank tape tied to the cover by a purple 'Passed by censor in N.Z.' handstamp with the number 18 (allocated to Wellington). The cover is correctly franked with 1s 6d as the Empire Air Mail Scheme had been ended on 4 September. Not all mail to Britain was censored in the early stages of the war and a previous article showed a cover postmarked in Wellington on 9 September that has no censor marks (Ref. 3).



**Figure 1:** 5 September 1939 censored cover to London.

Very few early examples of censored New Zealand mail have been reported. A study by Rodney Stone in 1988 recorded 800 items of New Zealand civil post in the WWII period and the earliest censored cover he recorded was dated 26 October 1939 (Ref. 4). I have seen five examples of censored covers prior to that date and the above example (Figure 1) is the only one to Britain that I have seen censored, in either September or October of 1939. It could be that as the address was c/o a bookshop, this aroused the suspicions of the censors.

The other four examples are to non-Empire countries and that is not surprising as it seems reasonable to assume that they would be of more interest to the censors. I have the scan of a cover addressed to Switzerland and postmarked on 6 September with a Switzerland backstamp of 12 October that was similarly opened by the censors and sealed with a blank tape. Its censor number is 17 - also allocated to Wellington. If it had not been delayed, by the censors, it would have arrived in Switzerland around 27 September (Ref. 5) and so there was a significant delay.



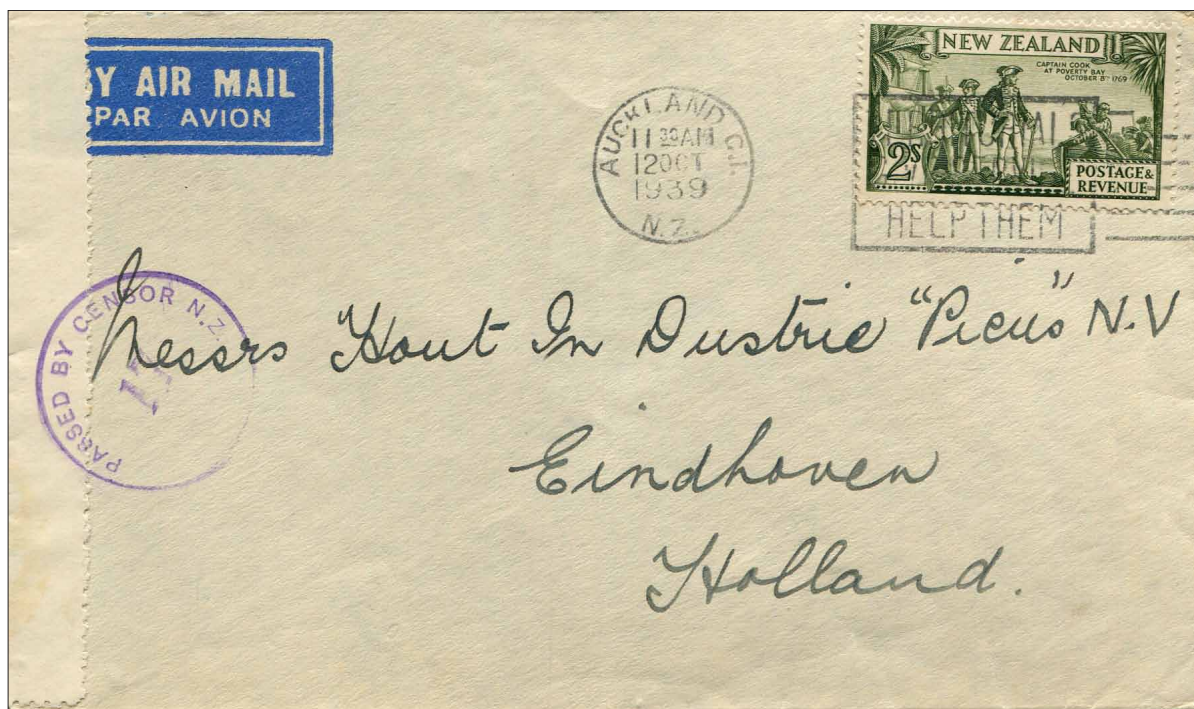


Figure 2: 12 October 1939 censored cover to Holland.

In October 1939, printed censor tapes were introduced inscribed: 'Opened and passed by the Censor in New Zealand' on two lines. The earliest reported use is a cover to Finland postmarked 4 October 1939 (Ref. 6). It was postmarked in Christchurch, but the censor number is 2 which is reported as being allocated to Auckland (Ref. 2). The two other covers (Figures 2 and 3) are to the Netherlands, postmarked at Auckland 12 October (censor number 77) and to Italy postmarked at Wanganui on 18 October (censor number 2) both sealed with printed censor tapes. The cover to Italy has an Athens transit mark of 14 November and a Milan backstamp of 17 November. That ties in with it being flown on the flight that left Sydney on 4 November and arrived in

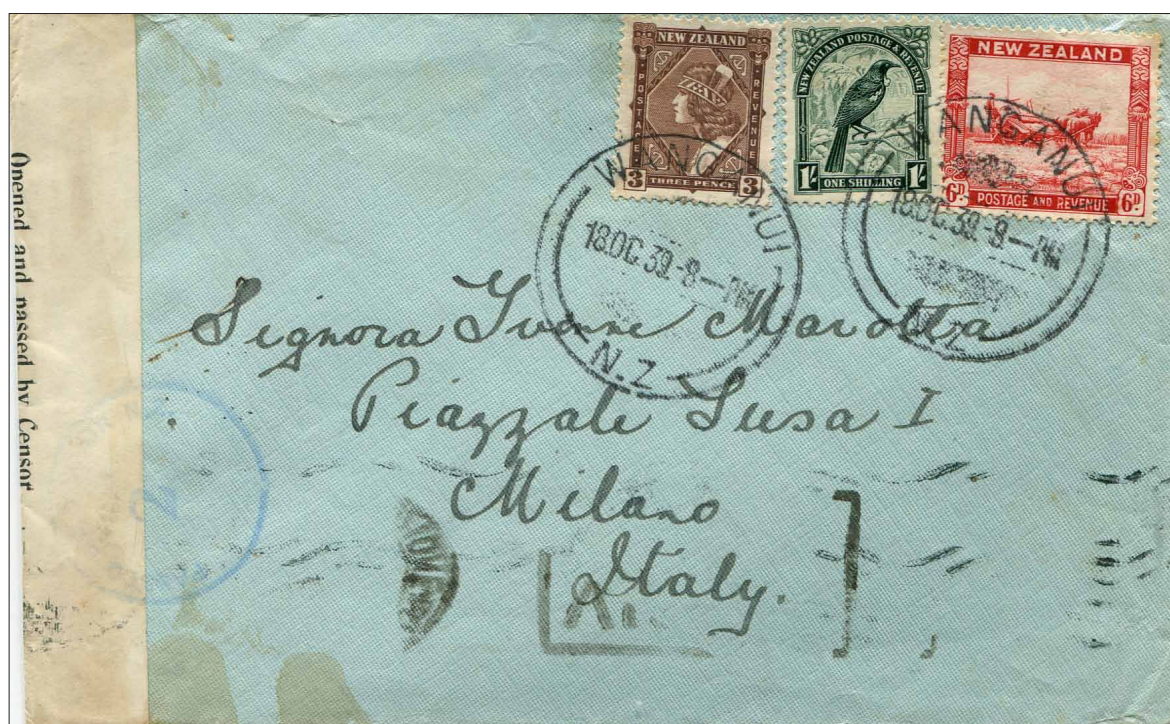


Figure 3: 18 October 1939 censored cover to Italy.

Athens on 13 November. So again there was a delay due to it being dealt with by the censors, but the extent is not clear as the dates of trans-Tasman sailings were not published after the start of the war.

As three of the five censored covers discussed above are in my collection, it seems reasonable to assume that there are significant numbers of unreported covers. I would be very interested to hear of other examples of New Zealand censored mail in the months of September and October 1939.

#### References:

1. Branum, G., 'Civilian Postal Censorship in World War II: Some facts and Problems', *The Kiwi*, vol.43, no. 5, pp 90-97, September 1994.
2. Startup R. and LaBlonde C., *The Postal History of World War II Mail between New Zealand and Switzerland*, Postal History Society of New Zealand, 2005.
3. Clark R., 'Beginning and End of the Empire Air Mail Scheme from New Zealand', *The Kiwi*, vol.63, no. 5, pp 120-123, September 2014.
4. Stone R., 'Civilian Postal Censorship in New Zealand in World War II', *The Mail Coach*, vol.25, no. 1, pp 3-7, October 1988.
5. 'Imperial Airways Aircraft Movement Charts', British Airways Archive and Museum, Heathrow.
6. Lindley J., 'Letter to the Editor', *The Mail Coach*, vol.28, no. 5, p190, June 1992.

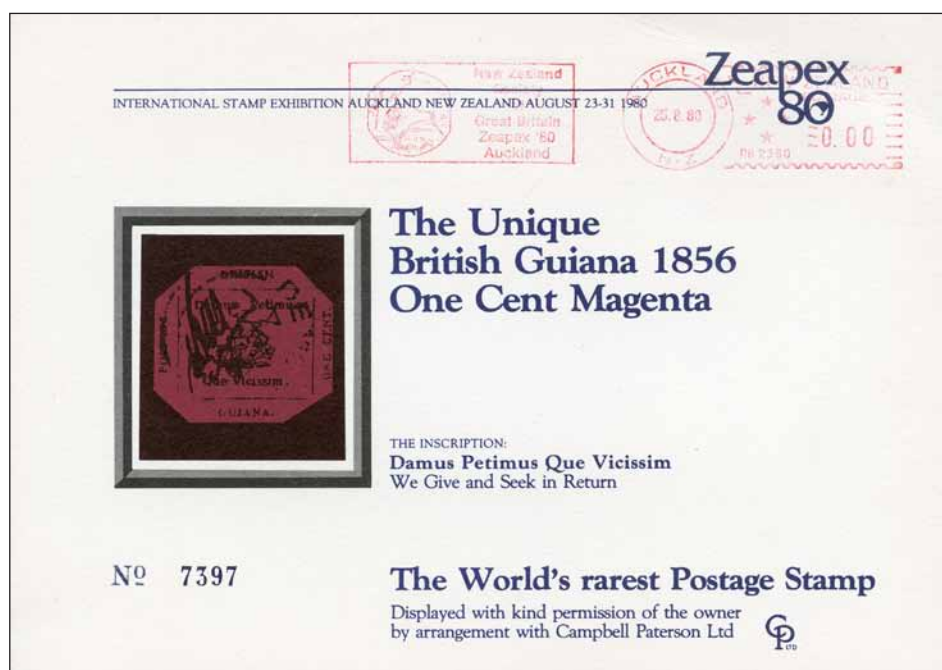
---

## THE WORLD'S RAREST METER MARK?

In my report of the recent World Stamp Show NY-2016 (page 126) I mention that visitors to the show had the opportunity to view one of the world's rarest stamps, The British Guiana 1c magenta of 1856. This iconic piece has changed hands for vast sums of money over the years and rarely emerges from the vaults so it was nice to be able to see it on this occasion.

One of the things that John Watts sent me recently, after he cleared his desk prior to moving house, was a card posted from the international exhibition held in Auckland in August 1980, 'Zeapex 80'. This particular card caught my eye, not because it bears an image of this famous stamp, but because the card bears a pictorial meter mark (Pitney Bowes Postage Meter No. 2380) 'Authorised only for use by New Zealand Society of Great Britain at Zeapex '80, Auckland, 23-31 August 1980'. Now that's what I call a rarity!!

(PACW)





# COVERS SENT TO LONDON

## C/O THE HIGH COMMISSIONER FOR NEW ZEALAND

*Adrian W Philbey*

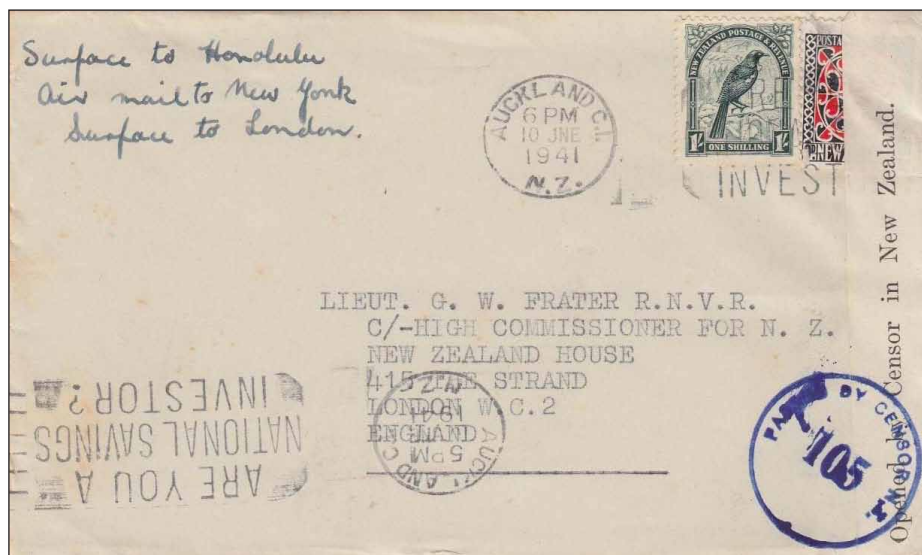
As New Zealand illustrated first day covers became popularised from 1935 onwards (Ref. 1), stamp dealers arranged for envelopes addressed to central destinations to be commissioned in bulk for subsequent sale in the philatelic trade. In London, the Office of the High Commissioner for New Zealand, at New Zealand House, 415 The Strand WC2, was used as a destination for many such covers (Figures 1-3), making use of a receipt service for mail provided for visitors (Ref. 2). The cancellations on these covers were commissioned by philatelists from the United Kingdom and the addresses presumably would have been typed centrally in New Zealand, usually at Wellington, for despatch to London. This article highlights the role that the New Zealand High Commission played in the philatelic trade in the 1940s and 1950s.



**Figure 1:** A King's Jubilee airmail cover, cancelled at Christchurch, 15 May 1935, addressed to the New Zealand High Commissioner, 415 The Strand, London WC2. The cover was one of many intended for despatch on a flight, subsequently cancelled, by Sir Charles Kingsford Smith, by the Southern Cross, from New Zealand to Australia and thence to the United Kingdom.



**Figure 2:** Cover addressed, by hand, to The Right Hon. Mr M. J. Savage, Prime Minister of New Zealand (1935 to 1940), c/o High Commissioner; London, cancelled at Dunedin, 31 March 1937.



**Figure 3:** Cover, opened by the New Zealand Censor, addressed to Lieut. G.W. Frater R.N.V.R., c/- High Commissioner for NZ, cancelled at Auckland, 10 June 1941, sent by surface mail to Honolulu, air mail to New York and thence by surface mail to London.

Subsequently, most illustrated covers sent to the New Zealand High Commissioner for philatelic purposes have carried New Zealand health stamps. Recipients of New Zealand health covers from 1943 to 1959, addressed in typed, capitalised text, c/o the High Commissioner for New Zealand, all cancelled at Wellington, have included:

Addressee	Dates	Addressee	Dates
Messrs L. Aarons & Son	1945	Mr J.K. Adlah	1946
Mr Harry Allen	1945-51	Mr J.W. Ashton	1943 (Figure 4)
Mr E. Burrows	1948-52	Mr F. Chart	1947
Messrs Dibben & Sons	1945-48	Captain T. Eastham	1944-47 (Figure 5)
Messrs Ewen's Colonial Stamp Market	1943	Mr J. Feasey	1945-48
Mr S. Goodstein	1944	Mr C. Hansen	1943-50
Mr C. Hansru	1945	Messrs Healey & Wise	1943-54
Mr S.H. Heald	1945	The International Stamp Co. Ltd	1944-46 (Figure 6)
Mr John Kay	1943-44	Mr J.E. Lea	1945-48
Mr W.F. Mahony	1946	Mr R.E. Mansfield	1945-46
Mr F.E. Metcalfe	1946	Messrs S. and M. Millar Bros	1944
Mr T.K. Parsons	1944	Messrs Philatelia Limited	1944-48
Mr J. Reese	1945	Mr J. Sanders	1955-59
Stamp Importers	1946-47	Mr W. Ramsay Strachan	1944-51
Mr J. Tauber	1944	Mr G. G. Woollatt	1945
Miss W. (Wynne) Yeomans	1944-46		

One of the latest illustrated covers, sent c/o High Commissioner for New Zealand, that I have seen, is a New Zealand health first day cover (Jones H59.1AA) (Ref. 3) addressed to Mr J. Sanders and cancelled at Otaki Health Camp on 16 September 1959 (see Front Cover).

Most of the illustrated first day covers sent, c/o High Commissioner for New Zealand, from 1943 to 1959 are Health Federation covers, for example those catalogued by Jones as Jones H43.1B (cancelled 1 October 1943), Jones H44.1AA (cancelled 9 October 1944), Jones H45.1AA (cancelled 1 October 1945) and Jones H46.1AA (cancelled 24 October 1946). The recipients of other illustrated first day covers were Miss W. Yeomans and Messrs. Stamps Service in 1945 (Jones H45.1L). Most of the addresses on these covers were typed, but some have been

seen hand stamped, for example, 1946 New Zealand health first day covers (Jones H46.1AAa) addressed to Messrs. Stamp Importers and Miss W. Yeomans (misspelt “Yoemans”).

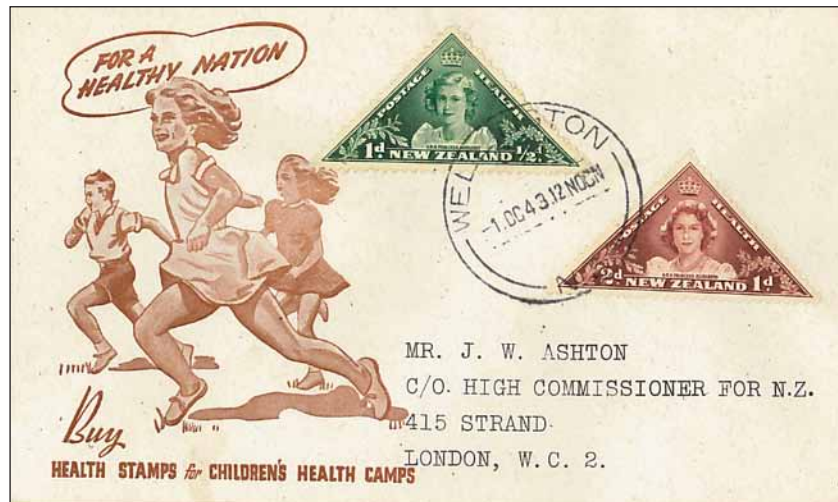


Figure 4: 1943 health cover addressed to Mr. J. W. Ashton.



Figure 5: 1944 health cover addressed to Captain T. Eastham.

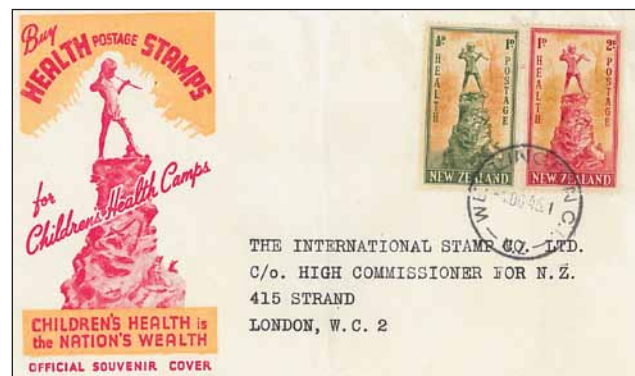


Figure 6: 1945 cover to The International Stamp Co. Ltd.

The usage of New Zealand House as a destination for philatelic covers appears to have increased considerably in 1945. Jones H45.1AA (Figure 6) depicts the statue of Peter Pan and urges the public to “Buy Health Postage Stamps for Children’s Health Camps ... Children’s Health is the Nation’s Wealth”. Some of the interest in these covers from London collectors may have arisen due to the location of the statue of Peter Pan in Kensington Park.

Several illustrated health first day covers, sent from 1944 to 1946, had additional colour applied by John Barnard (Jay) Leach, New York, USA, who specialised in embellishing covers and established Overseas Mailers in 1949 (Refs. 3, 4 and 5). Such envelopes usually contained a cyclostyled (mimeographed) insert. Those known sent, c/o the High Commissioner for New Zealand, include Jones H44.1AC (addressed to the Windsor Stamp Co.), Jones H45.1AB (addressed to Mr J. Feasey), and Jones H46.1ACA and Jones H46.1ACB (addressed to Mr J.K. Adlah).

The New Zealand High Commission occupied New Zealand House at 415 The Strand, London SW2, from 1916 to 1963 (Figure 7) having previously been at 13 Victoria Street, London SW1. It relocated to the current New Zealand House at 80 Haymarket, London SW1, in 1963. New Zealand High Commissioners to the United Kingdom during the period of interest include Sir William Joseph Jordan (1936 to 1951), Sir Frederick Widdowson Doidge (1951 to 1955), Sir Thomas Clifton Webb (1955 to 1958), Mr Richard Mitchelson Campbell (acting in 1958) and Sir George Robert Laking (acting from 1958 to 1961).

The High Commission was closely involved in commissioning several issues of New Zealand stamps. As an example, the first suggestion for the 1946 Peace issue was made, in 1941, by Mr W.E. Pratt, from the office of the High Commissioner for New Zealand, in a letter to the Director-General of the New Zealand Post and Telegraph Department (Ref. 6). After widespread consultation, the accepted designs, produced by James Berry, were sent to the High Commissioner with a request to call for tenders for printing from British companies. Illustrated first





**Figure 7:** *New Zealand House, 415 The Strand, where the High Commissioner for the 'Dominion of New Zealand' was located from 1916 to 1963.*

*Image from: 'Sculpture on the Strand'  
<http://www.speel.me.uk/sculptlondon/strand.htm>  
 reproduced by kind permission of Mr Bob Speel.*

day covers (Jones C46.1PA) bearing New Zealand 1946 peace stamps, cancelled in Wellington on the first day of issue (1 April 1946), have been seen addressed, c/o High Commissioner for N.Z., to Mr Harry Allan, Capt. T. Eastham, Messrs. David Field (Figure 8), The Globe Stamp Co., Mr F.E. Metcalfe, Mr T.K. Parsons, Mr L.M. Sharp and Miss W. Yeomans. Covers of the same design, bearing 1946 Peace stamps overprinted 'Western Samoa', have been seen addressed to Mr J.E. Lea, Mr A. Peal and Southern Stamp Service, whilst covers affixed with stamps overprinted 'Niue' have been seen addressed to Mr W.J. Foster, c/o High Commissioner for N.Z.

Numerous commemorative, definitive and health covers were addressed to Miss M. (Mildred) Hodson, c/o the New Zealand High Commissioner, from 1953 to 1957. These included illustrated covers commemorating the Coronation of Queen Elizabeth II in 1953 (from the Chatham Islands, Kermadec Islands, Campbell Island and Tokelau Islands), the Royal Visit to New Zealand by Queen Elizabeth II and the Duke of Edinburgh from 1953 to 1954 (cancelled at Wellington), the opening of the New Zealand Parliament by Queen Elizabeth II on 12 January 1954 (cancelled at the Parliament Buildings), the New Zealand Stamp Centenary, 1955, (from Campbell Island) and the 1957 Plunkett Society Jubilee (from Campbell Island). Illustrated covers from the Chatham Islands and the Kermadec Islands, with 1954 Queen Elizabeth II definitive stamps affixed, were addressed to Miss M. Hodson, c/o the New Zealand High Commissioner (Ref. 3). Illustrated health covers were addressed to the same recipient from the Chatham Islands (1954 and 1957) and Kermadec Islands (1955).

Covers commemorating the Coronation of Queen Elizabeth II (cancelled at Wellington 25 May 1953) and the Royal visit (cancelled at Wellington 9 December 1953) were addressed to Mr W.A. White. Recipients of 1948 souvenir and 1953 Coronation covers from the Tokelau Islands, included Mr J.E. Lea (1948), Mr O. Marsh (1948), The Mayflower Stamp Co. (1953) and Mr W. Ramsay Strachan (1953). First day covers carrying Ross Dependency stamps, cancelled at Scott Base on 11 January 1957, were addressed to Mr N.S. Pateman. All these were addressed 'c/o the New Zealand High Commissioner'.



**Figure 8:** *Illustrated cover (Jones C46.1PA) bearing the New Zealand 1946 peace stamps, cancelled 1 April 1946, addressed to Messrs David Field Ltd., c/o High Commissioner for N.Z.*

A cover addressed to The Official Secretary, New Zealand High Commissioner's Office, 415 Strand, London, W.C.2., England, was salvaged from the wreck of the *Belfast* (G-ALAM), a British Overseas Airways Corporation (BOAC) Lockheed L-749A Constellation aircraft, which crashed and caught fire while landing at Kallang Airport, Singapore, on 13 March 1954 (Figure 9); 33, of the 40, passengers and crew were killed.



**Figure 9:** Cover addressed to The Official Secretary, New Zealand High Commissioner's Office, salvaged from the wreck of the *Belfast* (G-ALAM), which crashed in Singapore on 13 March 1954. Franked by postage meter (1/6) and cancelled at Te Aro, Wellington, on 10 March 1954. Endorsed 'Salvaged Mail, Aircraft Crash, Singapore 13.3.1954'. Opened and re-sealed (right) with 'Official' tape.

The High Commissioner for New Zealand in London was not the only destination for commissioned first day covers. Similar covers were sent from the central post office in Wellington to a range of other private or commercial addresses in the United Kingdom (mainly London), as well as to addresses in Australia (mainly Sydney) and the USA (mainly New York).

In conclusion, in addition to official and unofficial mail directed to the High Commission, the office of the High Commissioner for New Zealand in London received New Zealand airmail, health, commemorative, definitive and other philatelic covers, on behalf of collectors and dealers, from as early as 1943, and appears to have supported this facet of New Zealand's philatelic history until at least 1959.

[Editors Note: Illustrations are not necessarily shown at their original size.]

## References:

1. Thackery, T.C., *New Zealand First Day and Early Use Covers and Stamps 1855-2003*, Pub. by The Royal Philatelic Society of New Zealand, Wellington, New Zealand, 2004.
2. Capill, C.G., 'Mail from the New Zealand High Commissioner in London'. In: *New Zealand. A Philatelic Miscellany*, pp 163-172, Pub. New Zealand Society of Great Britain, Ed. Berry, A.P., 1990.
3. Jones, S., *Illustrated First Day Covers of New Zealand (Pre-decimal Period). Part 2: Commemoratives, Definitives, Christmas, Government Life, Ross Dependency, Airmail*, Pub. 3P, Lower Hutt, New Zealand, 2004.
4. Jones, S., *Illustrated First Day Covers of New Zealand. 1933-2000. Part 1: Health*, Pub. 3P, Lower Hutt, New Zealand, 2008.
5. Almeida, N., *Overseas Mailers FDCs of Australia*, Pub. Australian Sports Stamps, Melbourne, Victoria, Australia 2011.
6. Collins, R.J.G., Watts, C.W. (Editors), *The Postage Stamps of New Zealand. Vol. II*, Pub. The Royal Philatelic Society of New Zealand, Wellington, New Zealand, 1950.



# WORLD STAMP SHOW - NY 2016

28 May-4 June 2016, Javitz Center, New York

*Paul Wreglesworth*

"Welcome to the greatest stamp show on earth" were the words that greeted visitors to the World Stamp Show - NY 2016. The Americans like to do things on a big scale and their stamp shows are no exception. Hosting a major international exhibition every ten years it was New York's turn at the end of May and the Javitz Center, on the west side of Manhattan alongside the Hudson river, provided an excellent venue for this event.

More than 200 dealers and around 50 postal administrations (regrettably not New Zealand Post) were in attendance to tempt collectors whilst some 60 societies and specialist organisations offered a comprehensive programme of meetings and lectures over the eight day period of the show. Something for almost everyone.

The exhibition halls were impressive, not just because of their 'aircraft hanger' like size (with an actual airplane in place!) but the amount of material on display, including both invited and competitive displays was eye watering. With more than 70,000 pages of stamps I was told that anyone who attended every day from opening to close, wishing to view every sheet on display would have less than 5 seconds to read each sheet - I have not checked the maths!



*The entrance to the show at the Javitz Center, New York.*



*4,600 competitive exhibits to view.*



*John Lennon's childhood stamp album on display  
- open at the New Zealand pages.*



*A restored Curtis JN-4H biplane on show.*

Amongst the world gems on show were the British Guiana 1856 1c Magenta, full sheets of the 1d black and 2d blue, courtesy of the British Postal Museum, and several copies of the iconic US 24c 'Inverted Jenny' stamp which features a Curtis bi-plane. A restored example of the famous plane was also on display at the show. John Lennon's schoolboy stamp album, purchased by the Smithsonian's National Postal Museum in Washington, in 2005, attracted much interest. It would be nice to think that this was partly due to the fact that it was displayed open at the New Zealand pages!





**Phone: (03) 579 5650. Fax: (03) 579 9894.  
PO Box 5086, Springlands, Blenheim 7241.**

The web site is up and running allowing orders to be placed directly once you have registered. Currently there are over 12,000 stamps, covers, postcards etc on the site and all are illustrated.

Email us if you have any problems registering or navigating around the site. There is a search facility allowing you to search for your Interests. e.g. Entering the word 'Railway' brings up around 200 different items.

### Website categories include:

- NZ definitive issues from Full Face Queens to the current issues.
- NZ Commemoratives from the 1906 Christchurch Exhibition onwards.
- NZ Health and Christmas issues.
- Booklets.
- Air mail stamps and covers.
- Life Insurance.
- Postage Due and Express stamps and covers.
- Postal fiscals and Revenue stamps.
- Cinderellas.
- Various miscellaneous issues and covers. Postal fiscals and Revenue stamps.
- New Zealand Postal History.
- New Zealand Postal Stationery.
- Antarctic stamps, Postcards and Postal History.
- Various British Commonwealth and Foreign Country's stamps and covers.

**Below is a sample of what you can find on the site:**



1906 Christchurch Exhibition aluminum postcard (rare).



1906 Christchurch Exhibition set with Exhibition cancels.



1868 Full Face Queen postage due cover.



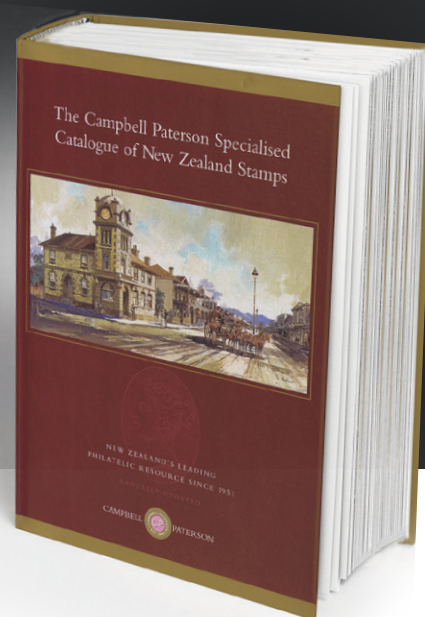
Registered postal stationery cover to USA.

# THE MOST COMPREHENSIVE CATALOGUE OF NEW ZEALAND STAMPS.

A 'must have' for  
all collectors.

**Campbell Paterson's Catalogue of New Zealand Stamps** The "CP New Zealand" is not just a two volume colour stamp catalogue. It's a whole new way of collecting New Zealand stamps.

The CP Catalogue is the only complete source of specialised knowledge about New Zealand stamps. Each issue or group of stamps has its own Section: King George V, Commemoratives, etc. Each Section features Permanent Pages comprising colour illustrations of all stamps, design notes, aids to identification and essential background information. The stamps receive a basic design number, e.g. King George V: K1-K21. Permanent Pages are followed by Temporary



Pages listing all specialised variations of shade, perf, watermark, paper, plate and other varieties, including all known errors, together with the Catalogue prices. Here the stamps receive their specialised CP Cat. numbers, e.g. King George V: 4d value K5a - K5j and Official overprints: KO5d, KO5g.

Once a year we will automatically post out to you the annual CP Catalogue supplement, containing new issues, new discoveries and the latest, up-to-date Catalogue prices. You'll never need to buy another new catalogue.

The CP Catalogue -- Everything You Ever Wanted To Know About New Zealand Stamps.

**\$180 - For New Zealand Clients**  
incl GST & P&P

**\$150 - For Overseas Clients**  
+P&P

CONTACT US

For further info email [service@campbellpaterson.co.nz](mailto:service@campbellpaterson.co.nz)  
or visit our website [www.campbellpaterson.co.nz](http://www.campbellpaterson.co.nz)