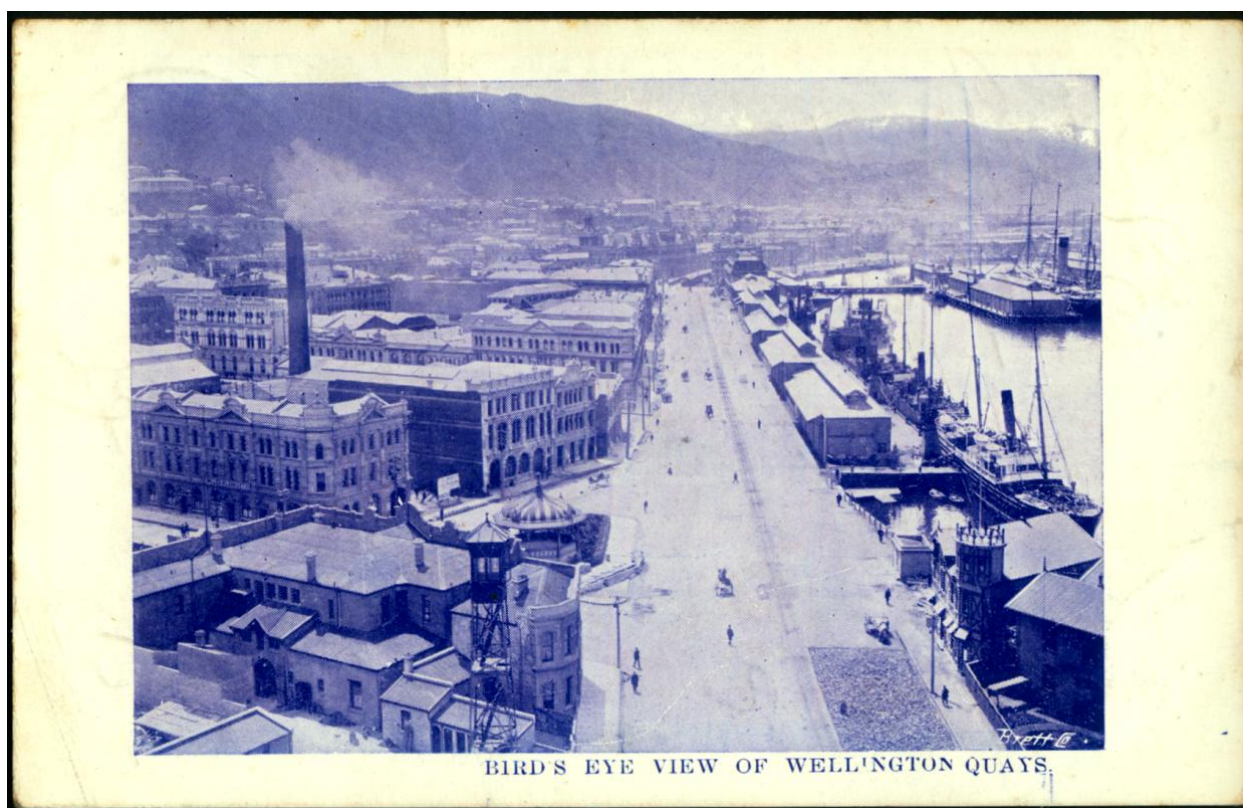


# ***THE KIWI***

**JOURNAL OF THE NEW ZEALAND SOCIETY OF GREAT BRITAIN**



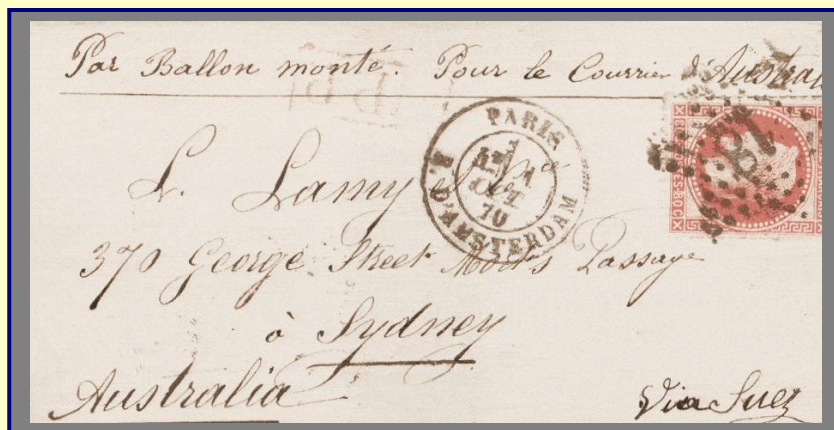
*A Christmas greeting card issued by the N.Z. Post & Telegraph department*

VOLUME 62 NUMBER 3  
WHOLE NUMBER 359

MAY 2013



## Superb material for the discerning



The above cover was an example of the world's first airmail and is the only known Paris ballon post cover addressed to Australasia. In 2009 Mowbrays Australia sold this 1870 Siege of Paris ballon monté cover for NZ \$238,625 – then a record Australasian price for a philatelic item.



The above 13 August 1855 cover from Auckland to Birmingham, England, bears a pair of New Zealand's very first 1d full-face queen stamps. Only three covers bearing 1d SG1 FFQs are known – this being the earliest recorded date. It was acquired in 2009 by John Mowbray for a client for NZ \$138,000.

**Mowbray Collectables buys and sells collections, stamps and postal history. What can you offer? Contact our friendly staff in the first instance.**

**Mowbray collectables offers New Zealand and world collections, stamps and postal history in monthly postal auction catalogues – free samples available!**

## **Mowbray Collectables**

**Private Bag 63000, Wellington, New Zealand 6140**

**☎ + 64 6 364 8270**

**fax + 64 6 364 8252**

**[mowbray.stamps@xtra.co.nz](mailto:mowbray.stamps@xtra.co.nz)**

**[www.mowbraycollectables.co.nz](http://www.mowbraycollectables.co.nz)**

## THE NEW ZEALAND SOCIETY OF GREAT BRITAIN

**Honorary President**  
**Andrew Dove MBE FRPSL**

**Hon. Chairman**  
John Stimson

**Hon. General Secretary**  
Keith C. Collins  
13, Briton Crescent,  
Sanderstead, Surrey, CR2 0JN  
☎0208-657-4566.  
e-mail: keithccollins@aol.com

**Hon. Treasurer and Membership Sec.**  
Professor Derek R. Diamond,  
9, Ashley Drive, Walton on Thames,  
Surrey, KT12 1JL  
☎01932-223280  
e-mail: drdiamond@mac.com

**Hon. Packet Secretary**  
Professor J. D. Hepworth  
2, Carnoustie Close,  
Fulwood, Preston, Lancashire, PR2 7ER  
☎01772 861709  
e-mail: j.d.hepworth@tinyworld.co.uk

**Hon. Editor of *The Kiwi***  
Paul Wreglesworth  
37, Blakelow Road,  
Macclesfield, Cheshire, SK11 7ED  
☎01625 420694  
e-mail: kiwieditor@gmail.com

**Webmaster**  
Bob Clark  
nzsgb1@googlemail.com

**Website**  
[www.nzstamps.org.uk/nzsgb](http://www.nzstamps.org.uk/nzsgb)

**Representative in New Zealand**  
John Watts  
j-watts@clear.net.nz

## CONTENTS

Editorial	44
- 'The Kiwi' Current Advertising Rates	
- 'NZSGB' – Current Subscription Rates	
- Publications Available	
Membership News	45
Honour for a Member – Bob Odenweller	45
Forthcoming Meetings	46
- <i>London</i>	
- <i>North of England Regional Group</i>	
- <i>Midland Regional Group</i>	
- <i>Scottish Regional Group</i>	
Notes of Meetings Held	
- <i>London</i>	47
- <i>North of England Regional Group</i>	48
- <i>Midland Regional Group</i>	49
Notice of Society Auction	49
A Note from the Club Packet Secretary	51
New Zealand Post – Stamp Issuing Programme for 2013	51
New Zealand to Britain & Canada via US Air Services in 1930-35 ( <i>Robert Clark</i> )	52
Christmas Telegraph Greeting Cards ( <i>John Watts</i> )	56
First Pictorials Used on Registered Mail	59
– A Correction ( <i>D R Diamond</i> )	
Watermark Master Plates	60
– A New Zealand Item ( <i>Paul Wreglesworth</i> )	
Revealing Hidden Detail	61
– A Useful New Resource ( <i>Paul Wreglesworth</i> )	

*The Society is affiliated to: The Association of British Philatelic Societies  
the New Zealand Philatelic Federation,  
the Midland Federation and the Association of Scottish Philatelic Societies.*



**MOWBRAY COLLECTABLES**

**is proud to support the New Zealand Society of Great Britain  
as its major sponsor**

## EDITORIAL

I do not intend to make a habit of taking up valuable space in *The Kiwi* with an editorial piece but I feel that, on this occasion, it is both justified and important.

Firstly it is essential to thank Andrew Dove for producing your journal in a timely and effective manner since 1997. As every day passes I am beginning to realise how much effort went into that.

Secondly, if you had not already noticed, this copy of *The Kiwi* is different. I plan to introduce colour on a regular basis and a few changes in style and format. Hopefully these will not interfere with your enjoyment of the journal. These changes are possible because Mowbray Collectables have agreed to provide the Society with support which will makes some of our aspirations achievable. However, to make the most of this opportunity I would like to appeal to you, the readers, to send me material to publish. This might be a question, a stamp or cover you would like to share with others, research you have done – or would like to do. Ideally I would like to receive material as a ‘Word’ document but I can handle any format – even pen and paper! Illustrations make all the difference of course and, wherever possible, they should be provided as scans (600dpi is ideal – important if you want to me to show detail on a stamp or cover). Scans should be saved as separate ‘jpeg’ files - not embedded in a ‘Word’ document.

Finally, any thoughts on what you would like to see in your journal would be welcome, as well as any constructive comment on format and style. My contact details are on the ‘Contents’ page.



## THE KIWI - CURRENT ADVERTISING RATES

	<b>Full</b> (single insertion)	<b>Full</b> (3 or more consecutive)	<b>Half</b> (single insertion)	<b>Half</b> (3 or more consecutive)	<b>Quarter</b> (single insertion)	<b>Quarter</b> (3 or more consecutive)
Colour	£90	£75	£75	£60	£50	£40
B&W	£75	£60	£60	£45	£40	£35

## NZSGB - CURRENT SUBSCRIPTION RATES

Membership rates for 2013 are £20 (within the UK) and £25 (overseas). Payment can be accepted by various means including PayPal (‘gift’ option). Further details are available from the Membership Secretary, Derek Diamond ([drdiamond@mac.com](mailto:drdiamond@mac.com)) or via the web-site.

## PUBLICATIONS AVAILABLE

The following Society publications are still available. Orders to Derek Diamond (contact details on ‘Contents’ page):-

SP3	The Kiwi Volumes 1-50. Full text on CD.	£10 incl. P&P
SP5	Index to The Kiwi, Volumes 1-60. Published on CD only.	£ 5 incl. P&P
SP6	Gems of Australasian Philately.	£10 incl. P&P

# SOCIETY NEWS

## MEMBERSHIP NEWS

### New Members:

A warm welcome to:

B. H Baldock, West Sussex

### Deceased:

B. Conway, London

### In Memoriam: Tom Latto

Tom passed away on November 19<sup>th</sup> 2012 at the age of 89. He will be well known to many as an enthusiastic collector of Health stamps and the Postal History of Chatham Island. In recent years his attention turned to Lancashire Postal History and, having sold his New Zealand collections, he resigned from the Society. Tom left his mark however as, together with Geoff Hook, he organised an informal gathering of members in the North West that led to the first official meeting of the North of England Regional Group in May 1992, the first of our regional groups to be formed. The group celebrates its 21<sup>st</sup> anniversary this year.



## HONOUR FOR A MEMBER

Congratulations to US member Bob Odenweller who has been awarded the most prestigious Lindenberg Medal by Der Berliner Philatelisten-Klub. The medal, which is sometimes referred to as the “Nobel prize for philately”, was introduced by the Berlin club in 1905 in recognition of Carl Lindenberg a German collector and philatelic judge. The medal, awarded to those who provide “conspicuous service to philately”, has been presented just sixty times since 1906.

Bob received the 2013 medal (Figure 1) at a meeting held in Berlin to celebrate the 125th anniversary of Der Berliner Philatelisten-Klub.



*Figure 1: The Lindenberg Medal (2013)*

## FORTHCOMING MEETINGS

### NEXT MEETING OF THE SOCIETY

The next meeting of the Society will be held on Saturday May 25<sup>th</sup> 2013

at the **Union Jack Club**, Sandell Street, London, SE1 8UJ .

Michael Wilkinson will lead a display on **BOOKLETS**

meeting starts at 14:00

members are invited to bring material of interest.

*A committee meeting will be held in the morning, starting at 11:00*

### NORTH OF ENGLAND REGIONAL GROUP

The next meeting of the North of England Group will be held on Saturday **May 18<sup>th</sup> 2013** at St. Luke's Church, Lodge Road, Orrell, starting at 12:30. Members are invited to bring along items of interest or recent acquisitions. There will also be a discussion on how best to celebrate the of the Group's 21<sup>st</sup> anniversary.

*Group Contact:* - Jack Lindley ☎ 0161 705 1074

### MIDLAND REGIONAL GROUP

The next meeting of the Midland Group will be held on Saturday **November 2<sup>nd</sup> 2013** at St Anne's Church Hall (behind the church), Park Hill, Birmingham, B13 8EU, starting at 14:00. Members are asked to bring along a mini display to entertain their colleagues.

*Group Contact:* - Ian Samuel ☎ 0121 449 0849

### SCOTTISH REGIONAL GROUP

The next meeting is an informal gathering, at 13:00 on Saturday **20<sup>th</sup> April 2013**, at the ASPS Congress in Perth. Meet in the cafe on the balcony of the Dewar Centre.

The summer meeting will be held on **Saturday June 1<sup>st</sup> 2013** in St John's Hall, Edinburgh. Andrew Dove will be showing his KGV material. The meeting starts at 14:00, with an informal get-together, over lunch, from 12.30 at Henderson's cafe (underneath the Hall).

*Group Contact:* - Michael Kirwan ☎ 0131 447 3420

# MEETINGS HELD

## NOTES OF THE MEETING HELD, IN LONDON, MARCH 30<sup>th</sup> 2013

The meeting opened at 11:00 with a session for members to show recent acquisitions and items of interest.

**Derek Diamond** showed a registered cover from 1857 bearing three 2d Chalon stamps and endorsed ‘<sup>d</sup>6’ indicating 6d still to pay. The question was asked as to whether the registration fee was paid, in cash, in advance and if so why was that sum not receipted, in stamps, on the cover? Derek also tabled a recent copy of *Stamp Magazine* which contained an article on De La Rue essay material from 1861 bearing the image of the King of Portugal which it is said were sent, as samples, to the New Zealand Post Office.

**Lew Giles** showed an interesting card and postmark from ‘Alpine Hill’ followed by a series of GV airmail covers showing the 8d and 9d rates flown with Imperial Airways via Karachi.

**Michael Wilkinson** showed a range of postcards that, for various reasons, had attracted Taxe marks and postage dues.

**Paul Wreglesworth** showed two underpaid covers from the sideface period. One to Austria from Tauranga, posted in 1884, and a second, from Wangaroa to Raumo, in Finland, dating from 1890. Both had interesting Taxe and due marks. The second cover had a postage due marking in Russian (Doplatit) and there was speculation as to the route the cover might have taken to reach Finland with the possibility that it would have been applied at St Petersburg.

**David Northover** brought along some fascinating modern errors including a copy of the \$1 Mt Maunganui from the 1998 Scenic Skies issue showing a 5mm shift of the silver colour. David also showed examples of gross miss-perforation of stamps.

**John Stimpson** showed a range of covers from the Second Sideface period with examples of different rates applied to items of different weight from the post UPU (after 1891) period.

The afternoon was occupied by the biennial 12 sheet competition. Each class was shown in turn and Robin Gwynn, visiting from New Zealand, kindly judged the competition and provided some useful feedback on all the entries.

The results were as follows:-

Class		Entrant	Subject of Entry	Award
<i>Classics</i>	<i>Winner</i>	<i>Derek Diamond</i>	<i>Use of 2d Imperf Chalon Heads</i>	<i>Campbell Paterson Trophy</i>
	<i>Runner Up</i>	<i>Michael Wilkinson</i>	<i>Chalon Heads 1855-1873</i>	<i>Certificate</i>
<i>Moderns 1</i>	<i>No Entries Received</i>			<i>David Forty Salver</i>
<i>Moderns 2</i>	<i>Winner</i>	<i>David Northover</i>	<i>1995 Pictorials</i>	<i>Barton Bowl</i>
<i>Postal History</i>	<i>Winner</i>	<i>Paul Wreglesworth</i>	<i>Railway Flag Stations</i>	<i>Stacey Hooker Cup</i>
<i>Open Class</i>	<i>No Entries Received</i>			<i>Kiwi Shield</i>



*Derek Diamond (left) and David Northover (right) receive their trophies, from Keith Collins, following success in the Society's 2013 competition.*

## NOTES OF THE NORTH OF ENGLAND GROUP MEETING HELD ON FEBRUARY 9<sup>th</sup> 2013

Congratulations to members of the *The North of England Group* who, having held their first official meeting on May 9<sup>th</sup> 1992, celebrate 21 years of meetings this year.

Eight members were present at the February meeting with apologies from two more. The meeting was a member's meeting. Members present showed:-

**John Atkinson:** 1946 Peace Issue (stamps, first day covers, brochure, overprints).

**John Hepworth:** Having recently returned from New Zealand John showed military items acquired during his visit. Highlights were from WWII, A Somes Island Internment Camp cover, A Pahiatua Internment Camp cover, Featherstone POW camp cover, various POW covers from WWI, Transport Ship mail (including 13, 43 and 56), various reinforcements including a blanked out FIRST Reinforcement and Hospital Ship mail. Various examples of mail from Egypt including mail posted by a wounded soldier and a Christmas card from NZ Engineers.

**Mike Hanson:** Postage due covers and stamps, modern postal stationery, aerogrammes and a rarely seen full set of Auckland Exhibition labels.

**Stuart Potter:** Deficient postage covers followed by a fascinating array of airmail covers of which very few were flown. These included Whitehead & Nicholl's Trans-Tasman flight of November 1934, first solo flight by a New Zealander from Sydney to Auckland, Clark's solo flight from London to Christchurch in November 1936 and Bond & Lobb's December 1946 flight from Sydney to Auckland.

**Paul Wreglesworth:** Postage dues on cover, instructional markings, airmail cachets including 'By air to London only' and 'O.A.T.'. A range of machine generated TPO markings and a cover endorsed 'Damaged Through Immersion in Manawatu River Railway Accident'.

**Jack Lindley:** Health stamps from 1929-1943, including plate and imprint blocks.

## NOTES OF THE MIDLAND GROUP MEETING HELD ON FEBRUARY 23<sup>rd</sup> 2013

Six members attended and contributed to the afternoon's display.

**John Potter:** showed postcards of the two New Zealand Great War hospital ships 'Maheno' and 'Marama' including postcards showing both ships before and after conversion, also the 1913 Auckland Exhibition stamps and postcards.

**Terry Hancox:** showed the 1891 (with VR) and 1905 (no VR) Life Insurance stamps and explained the reason for delays in their issue. Terry followed by showing two sets of six enlargements of these stamps produced for display in cabinets at the 1906 Christchurch Exhibition as advertising for the Life Insurance system. One set was in pristine condition whilst the other looked as though it had been in a display case. It is alleged only nine sets exist.

**Mike Smith:** showed an interesting display dealing with the Mount Tarawera eruption of 1886 which destroyed the Pink and White Terraces.

**Richard Gillam:** put up part of his collection of airmail covers including one registered cover which had a 3/- postal fiscal stamp genuinely used as part of the payment.

**Ian Samuel:** shared a selection of sheets from an old collection bought many years ago but never developed, which included a print of the Peter Pan statue which was used for the image on the 1945 Health stamps.

**Laurence Kimpton:** showed most of his very fine display on B.C.P.A. (British Commonwealth Pacific Airlines) which was awarded a Gold Medal at Stampex in September 2012.



## ANNUAL SOCIETY AUCTION NOTIFICATION

The annual auction will be held on November 30<sup>th</sup>, 2013 and managed by a team of club members under the direction of the auctioneer – **Brian Stonestreet**. The rules are clearly stated below and will be strictly applied to assist in the smooth running of the event.

1. **Vendors** must send a written description of each lot for sale to the catalogue compiler:-

**Andrew Dove**, 12, Stella Avenue, Tollerton, Notts, NG12 4EX

or by e-mail [dove697@btinternet.com](mailto:dove697@btinternet.com)

- to arrive not later than July 14<sup>th</sup>, 2013.

Only a description is required together with the vendor's reserve price. No market estimate is required. The minimum reserve is £3. Do **NOT** send material for sale to the compiler.

The catalogue compiler will acknowledge receipt of lot descriptions within 5 days. He will subsequently supply a copy of the auction list entry for proof-reading and this will include notification of the relevant lot numbers. Please include your e-mail address with your description of lots. Where possible, the auction catalogue compiler will communicate electronically.

2. **Only the first 400 descriptions will be accepted for sale in the auction.**

3. **Vendors** should note that, due to increases in postage rates, if heavy items are offered, and fail to sell, they will be returned to the vendor who will be charged the full cost of postage.
4. **Scans of auction lots:** it is planned to make scans of selected auction lots available on the Society website. If you have items that you wish to illustrate, the vendor should send scans when accepting/amending the auction list which includes the lot numbers. The catalogue compiler will arrange for the scans to be illustrated on the website. All scans should be of medium resolution (i.e. <500kb) and in JPEG format. Include the lot number (in the scan) – e.g. for lot 105 save as 105.jpg.
5. Lots should be contained in clear envelopes. **Vendors** should attach a label (min. 1cm square) in the SE corner of the lot and mark the lot number clearly on the label. Vendors unable to attend the auction must send their material to:

**Brian Stonestreet**, 32, Bedgebury Close, Vinters Park, Maidstone, Kent ME14 5QZ  
- to arrive not later than November 23<sup>rd</sup>, 2013.

- Vendors attending the auction may deliver their lots to the auctioneer on the day of the auction. In this case lots must be with the auctioneer no later than 11:30.

6. Viewing of lots will commence at 12.30. The auction will commence promptly at 14.00.
7. Only members of the Society are eligible to bid in the auction.
8. **Successful purchasers** attending the auction will be given their lots during the auction on condition that they settle their account before leaving.
9. **Vendors** may not remove unsold lots on the day without the authority of the auctioneer.
10. Successful purchasers not present will be contacted by e-mail or telephone. Provided payment is sent by return, lots will be despatched as promptly as possible.
11. **Unsold lots** and sales proceeds (less all expenses) will be returned to vendors once all sales income is received.
12. The Society will insure all items from the time of their receipt by the auctioneer until the time of purchase or return to vendor.
13. No postage costs are paid by the Society. The Society fee remains at 10% of the hammer price and will be paid by the vendor.
14. The auctioneer has the right to decline lots that do not conform to their description or which, in his view, are of insufficient quality to sell.
15. Any postal bidder with a serious complaint on receipt of his/her purchases must return them to the auctioneer within one week of their arrival.
16. **A list of unsold lots** will be placed on the Society website as soon as possible and withdrawn on the second Sunday following the auction. They will be available for purchase at the catalogue reserve on a first come basis by e-mail to [drdiamond@mac.com](mailto:drdiamond@mac.com).

### APPEAL

Each year it has been the practice of generous members to offer items, philatelic and general, to be auctioned for Society funds. This is much appreciated. Please see what you have that is surplus to your requirements. No matter what it is, we will be delighted to receive it, preferably by July 14<sup>th</sup>, 2013 to appear in the catalogue, otherwise at any time up to 12.00 noon on Kiwi Day.

Remember to bring your catalogue to the auction. Copies available in the room will cost £1.00.

-----

## A NOTE FROM THE CIRCULATING PACKET SECRETARY

Due to changes in postal rates future packets will be kept to a weight of no more than 1 kg so keeping postage costs to £3.00. To achieve this whilst maintaining a high overall packet value, individual booklets must now have a **minimum value of £15**. Booklets will only be sent on a second circuit when the material left is priced at over £10. Members should only submit material which they themselves would consider suitable to buy. Booklets of modern first day covers and similar sell poorly and weigh heavily, restricting the number of booklets which can be included in the packet and reducing its value. The packet secretary reserves the right to reject unsuitable books.

Members can help the smooth running of the packet if they will comply with the rules. Most importantly the packet **must be forwarded within 48 hours** – there have been instances where a packet has been kept for more than 10 days and no purchases were made. Some packets have taken over 4 months to circulate. If, you receive a packet yet, for some reason you find that you cannot comply with the time schedule, phone the Packet Secretary immediately, so eliminating concern about a lost packet of which there have been two instances in the past month.

Please take more care when you complete the return slips – they are so straightforward that there should be no errors. **Yet slips can be produced that illustrate every possible error or omission** – incorrect addition, no signature, no dates, no forwarding name and so on. Slips should be posted immediately you have forwarded the packet.

The packet remains a key benefit of membership and raises important funds for the Society. Please continue to support the Society by contributing to and receiving the packet. – *John Hepworth*



## NEW ZEALAND POST STAMP ISSUING PROGRAMME FOR 2013

The listing given in the March 2013 issue of *The Kiwi* (page 34) contained some errors and omissions. The programme for the remainder of the year is as follows:

May 1 <sup>st</sup>	Queen Elizabeth II – 60 <sup>th</sup> Anniversary of Coronation
May 10 <sup>th</sup>	Australia 2013 World Stamp Exhibition, Melbourne. (miniature sheet)
June 5 <sup>th</sup>	Matariki IV, Maori New Year
July 3 <sup>rd</sup>	2013 Children's Health (set plus miniature sheet)
July 3 <sup>rd</sup>	Another mystery special issue
August 7 <sup>th</sup>	Kiwiana, a further selection of Kiwi icons
September 4 <sup>th</sup>	Honey Bees and Annual Collectors Pack
September 13 <sup>th</sup>	Upper Hutt 2013 National Stamp Exhibition (miniature sheet)
October 2 <sup>nd</sup>	Christmas 2013
November 1 <sup>st</sup>	The Hobbit II – The Desolation of Smaug
November 13 <sup>th</sup>	2013 Ross Dependency issue

# NEW ZEALAND TO BRITAIN AND CANADA

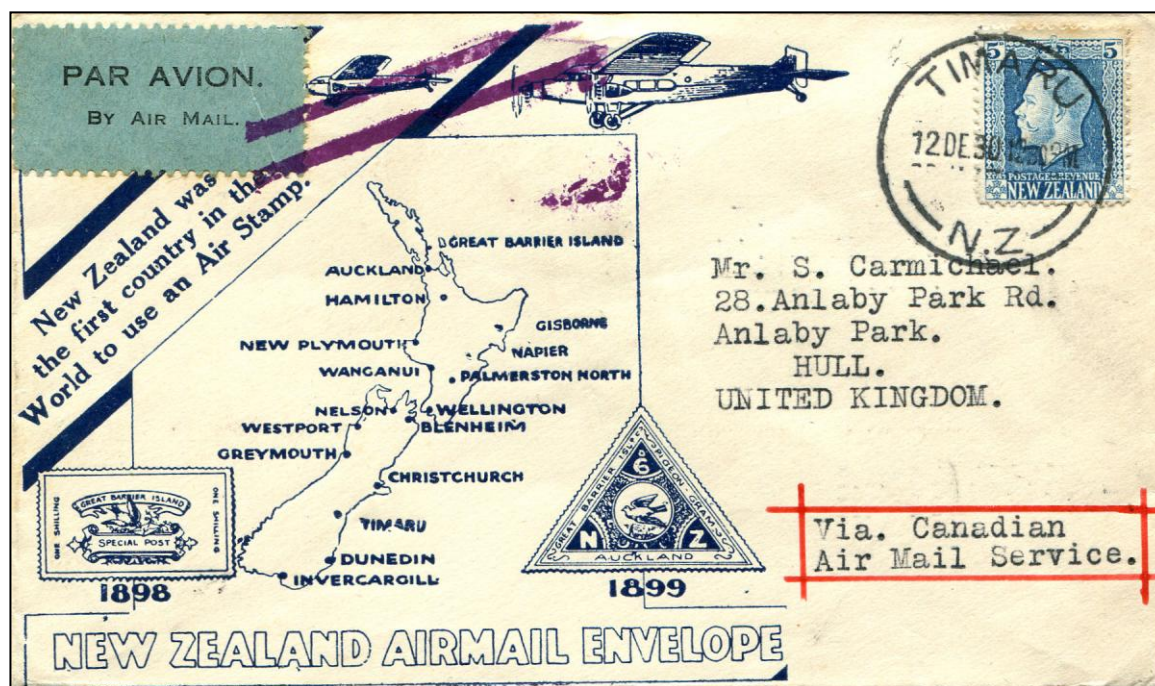
## VIA US AIR SERVICES IN 1930–35

*Robert Clark*

Although, in the early 1930's, the normal partial air mail route between New Zealand and Britain was westward using either or both the Adelaide – Perth and the Karachi – London services, it was also possible to send mail by sea across the Pacific to make use of North American air mail services, followed by sea across the Atlantic.

### 1930: The 5d Rate

There were two sailings between New Zealand and North America each month, one to Vancouver and the other to San Francisco. The first air mail to use the service via San Francisco left Wellington on 15<sup>th</sup> July 1930 while the first service via Vancouver left Auckland on 29<sup>th</sup> July. The postal rate was 1d surface per ounce plus 4d air mail fee per ½ ounce. An example of a cover sent on the 29<sup>th</sup> July service and franked with 5d was shown in a previous article (Ref. 1). Although little used, this service continued and a cover sent from Timaru to Hull on 12<sup>th</sup> December 1930 and franked with 5d is shown below (Figure 1). It would have been sent to Vancouver on the 'Aorangi' that left Auckland on 16<sup>th</sup> December. The air mail etiquette (i.e. the *Par Avion* label) has been cancelled by two parallel purple lines to show that the air mail part of the journey had finished and, according to McQueen, this jusqu'à cancellation was applied in New York (Ref. 2) and so the cover was flown by both Canadian and US air mail services.



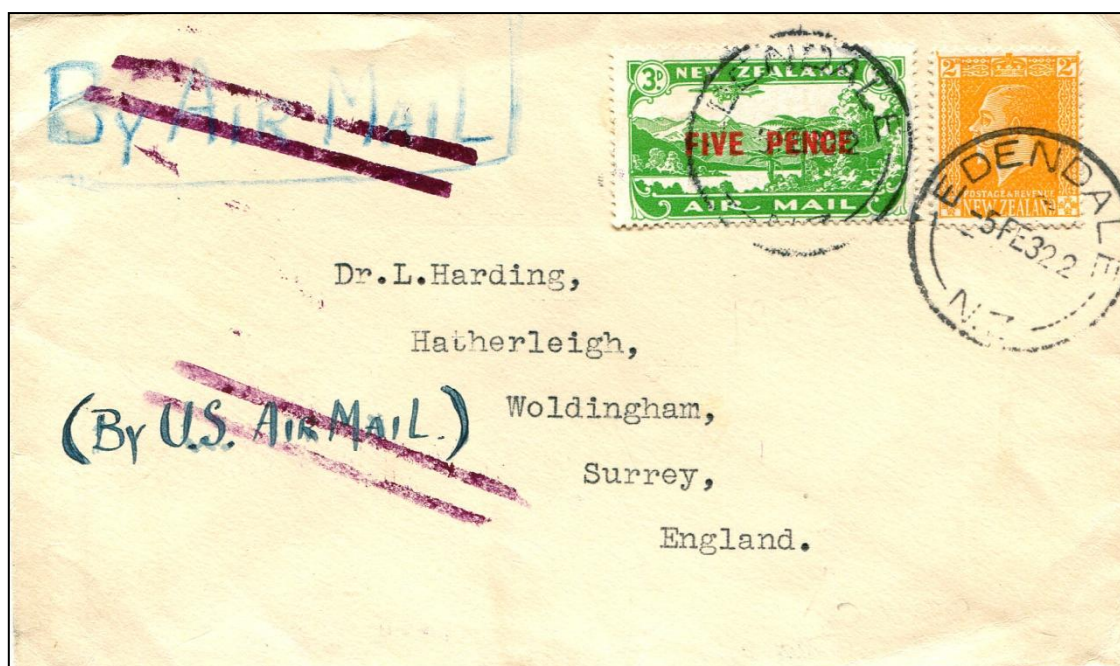
*Figure 1: Postmarked 12<sup>th</sup> December 1930 – 5d rate.*

## 1931- May 1932: The 7d Rate

The New Zealand surface rate was increased to 2d for the first ounce on 1<sup>st</sup> March 1931 which would suggest that the required franking was now 6d (2d surface + 4d airmail fee). However covers shown here (Figures 2 and 3) sent on this route in 1931 and 1932 are both franked with 7d. Their air mail etiquettes have the same New York jusqu'a cancellations as the previous cover.



*Figure 2: Postmarked 12<sup>th</sup> November 1931 – 7d rate.*



*Figure 3: Postmarked 5<sup>h</sup> February 1932 – 7d rate.*

I have been trying to explain the 7d franking for some time and was therefore very interested in the recent publication *'New Zealand Overseas Airmail Postage Rates 1930 – 2011'* by Robin Startup (Ref. 3). The first table, in a section headed *'1 July 1930'*, explains the 5d rate described above. In a section headed *'25 February 1931 Increased Rates'* there is a second table, but unfortunately there is a typographical error and the first table has been repeated.

The surface rate was reduced back to 1d per ounce on 1<sup>st</sup> June 1932 and that is shown in a subsequent section headed *'1 June 1932 Reduced Rates'*, but the US air mail fee is still given as 4d and the combined postage rate to Britain is listed as 5d.

The table in a later section, headed *'January 1934'*, gives what I believe is the answer. It draws on information from the *'NZ Post & Telegraphic Guide'* and lists the following air mail fees per half ounce using 'United States inland air services':

- To United States: 4d
- To Canada, via USA: 5d
- To Great Britain, Northern Ireland, Irish Free State, and countries in Europe, via USA: 5d

Although the section is headed *'January 1934'*, there is no indication of when the rates first came into effect. Further information is given in the daily mail notices in the *'Auckland Star'* from 1<sup>st</sup> July 1931 to 11<sup>th</sup> April 1932 which state:

'Correspondence will be accepted for dispatch by air mail services in Canada and United States of America. Air mail fee, in addition to postage, 4d per ½oz. The air mail fee payable on letters for Great Britain and Canada, forwarded through the intermediary of the United States of America, is 5d for each ½oz or fraction thereof.'

Hence, although it is not clear when the 5d air mail fee to Britain and to Canada via USA air services was introduced, it was in operation by 1<sup>st</sup> July 1931 and explains the 7d franking on the covers in Figures 2 and 3 (5d air mail fee plus 2d surface rate). I am not aware of this explanation previously being given in the philatelic literature.

An advantage of Internet auctions is that it enables people to save scans of covers for future study. I have a scan of a cover from Christchurch to Canada postmarked on 5<sup>th</sup> June 1931 and franked with 6d. It has routing instructions *'Via Canadian Air Mail Service'* although the next service was on the *'Makura'* that left Wellington for San Francisco on 17<sup>th</sup> June. So it was either sent by surface within the United States or the 5d air mail fee via US air mail services had not yet come into operation. Another scan is of a cover from Timaru to Canada postmarked on 13<sup>th</sup> July 1931 with routing instructions *'Via U.S.A. Air Mail Service'*. It is franked with 5d and has a *'To Pay 40 centimes'* handstamp which corresponds to it being underpaid by 2d. That is further evidence that the increased air mail fee to Canada via US air mail services was in operation by July 1931.

I have scans of other covers to Canada franked on 11<sup>th</sup> and 12<sup>th</sup> November 1931 sent on the first dispatch using New Zealand air mail stamps issued on 10<sup>th</sup> November. They are franked with 6d as the next trans-Pacific sailing was to Vancouver on 17<sup>th</sup> November on the *'Aorangi'* and so US air services were not used. The cover to England (Figure 2) would have been sent on the same service, but required 7d as it was flown to New York for onward dispatch by sea.

## June 1932 – May 35: The 6d Rate

On 1<sup>st</sup> June 1932, the surface rate was reduced back to 1d and so the required franking to Britain or Canada using US air mail services was now 6d. Below (Figure 4) is such a cover, to Scotland, postmarked in Wellington on 20<sup>th</sup> February 1934 and with routing instructions 'By U.S. Air Mail'.



**Figure 4:** Postmarked 20<sup>th</sup> February 1934 – 6d rate.

Early airmails typically provided little, if any, saving in time. Indeed the Wellington *'Evening Post'* announcing the airmails in June 1930 had the following:

'On account of the close connection with the fast Atlantic steamers of mails sent via San Francisco and Vancouver, the air services of the United States of America could hardly be used to advantage for correspondence to Great Britain and the Continent of Europe.'

This is confirmed by the cover in Figure 4. It would be sent on the *'Maunganui'* which sailed from Wellington to San Francisco on 20<sup>th</sup> February – 9<sup>th</sup> March 1934. A manuscript on the back states that it was received in Glasgow on 22<sup>nd</sup> March. Surface mail sent on the *'Maunganui'* arrived in London on 21<sup>st</sup> March and so the cover was likely sent on the same ship from New York as the surface mail. This was however better than the air mail addressed to Britain and sent on the first trans-Tasman air mail on 17<sup>th</sup> February 1934 and then on the Adelaide – Perth and Karachi – London air mail services at a combined rate of 1s 6d. It did not arrive in London until 22<sup>nd</sup> March.

The 6d rate continued until May 1935 when an inclusive air mail fee was introduced which was now 8d to USA and 9d to Britain and to Canada via US air services (Ref. 3).

### Sources:

Dates for mail steamers are taken from contemporary issues of the *'Auckland Star'* and the Wellington *'Evening Post'*, available at: [paperspast.natlib.govt.nz](http://paperspast.natlib.govt.nz)

## References:

1. Clark R., 'Early Airmail to the United States with Mixed Franking', *The Kiwi*, vol.57, no.3, pp60-62, May 2008.
2. McQueen I., '*Jusqu'a Airmail Markings*', Dartford, Kent, 1993.
3. Startup R., '*New Zealand Overseas Airmail Postage Rates 1930 – 2011*' Air Mail Society of New Zealand and Mowbray Collectables, 2012.



## CHRISTMAS TELEGRAPH GREETING CARDS

*John Watts*

In 1907 the NZ Post & Telegraph department introduced a series of cards enabling customers to send a simple pre-set Christmas message for 6d.

*Figure 1: The message side of the card*

The illustrations on the cards were scenes and activities from around New Zealand and the Pacific Dependencies (Front Cover and Figures 2 and 3). The cards were printed in black, blue or purple whilst the choice of subject depicted would be at the discretion of the office receiving the order for the cards, and subject to stocks held.

Because there are no Post Office records of the subjects chosen the listing has been compiled from known items in people's collections and, to date, 36 different cards have been reported. Those recorded so far are shown in the table on page 57.

## N.Z. Post Office Christmas Telegram Greeting Cards

No.	Card Illustration - Description	E.D.R.	Colours	Mint	T. Dept
1	A North Auckland Waterfall	1907	Bk		
2	Banks of River Avon, Christchurch	1907	Bk Bl P	✓	
3	Bird's Eye View of Wellington Quays <i>(front cover)</i>	1908	Bk P	✓	
4	Cathedral Peaks, Manapouri		Bk P	✓	✓
5	Cheltenham Beach, Auckland NZ	1907	Bk Bl P	✓	
6	Coaching in Buller Gorge	1907	Bk P	✓	✓
7	Cooking Dinner, Whakarewarewa	1907	Bk Bl		
8	Devon Street, New Plymouth	1907	Bk Bl P		
9	Esplanade, Napier	1907	Bk		
10	Examples of Maori Art		Bk Bl	✓	✓
11	Glimpse of Nelson, NZ	1910	Bk Bl	✓	
12	Hawke's Crag, Buller Gorge, NZ	1907	Bk Bl		
13	Jerusalem on Wanganui River	1907	Bk Bl P		
14	Looking Down Francis Joseph Glacier	1907	Bk P		
15	Mahuta Te Toko, Maori Chief	1907	Bk P		
16	Mangaia Boy with Fruit	1908	Bk	✓	
17	Maori Canoe Hurdling Race on Waikato River	1908	Bk P		
18	Maori Court, Auckland Museum	1910	Bk P	✓	✓
19	Maori Washing, Whakarewarewa		Bk	✓	
20	Mitre Peak, Milford Sound by Moonlight	1908	Bl P	✓	
21	Moonlight Effect on Lake Waikaremoana	1907	Bk P		✓
22	Napier Breakwater	1907	Bk Bl P		
23	Native Dancing, Rarotonga	1907	Bk P		
24	Native Village, Rarotonga	1908	Bk P	✓	✓
25	Panel from Maori Carved House, Auckland	1910	Bk P	✓	
26	Parliament Buildings, Wellington	1907	Bk Bl	✓	
27	Pelorus Sound, Marlborough, NZ	1907	Bk Bl P	✓	
28	Poi Dancers at Maketu	1907	Bk P		
29	Pulpit in Christchurch Cathedral <i>(Figure 3)</i>	1907	Bk P		✓
30	Queenstown, Lake Wakatipu	1908	Bk Bl P	✓	✓
31	Roman Catholic Cathedral, Christchurch	1907	Bk		
32	Summit of Mount Hart	1907	Bk P	✓	✓
33	The Clinton River Near Glade House	1907	Bk Bl P	✓	✓
34	The Francis Joseph Glacier, from Sentinel Rock		Bk P	✓	✓
35	'The Lion', Milford Sound	1907	Bk Bl P	✓	✓
36	The Runanga House, Ruatoki <i>(Figure 2)</i>	1908	Bk		✓

Abbreviations: **E.D.R.:** Earliest Date Reported      **T. Dept:** N.Z. Tourist Department  
**Colours:** Bk – Black, Bl – Blue, P – Purple (note: some printings tend towards violet)

The table produced here is based on those shown in *The Mail Coach*, journal of The Postal History Society of New Zealand, (Refs. 1 and 2).

I have copies of all the cards listed to date except No. 20 - Mitre Peak, Milford Sound by Moonlight. It would be very much appreciated if anyone who has a copy of this card could either let me have it on loan or send me a scan (600 dpi). Also if any member who has any of the listed cards and can add any details with regard to colours and the year the card is date stamped, if used, this will help to complete the records. Any assistance members can provide will be much appreciated.

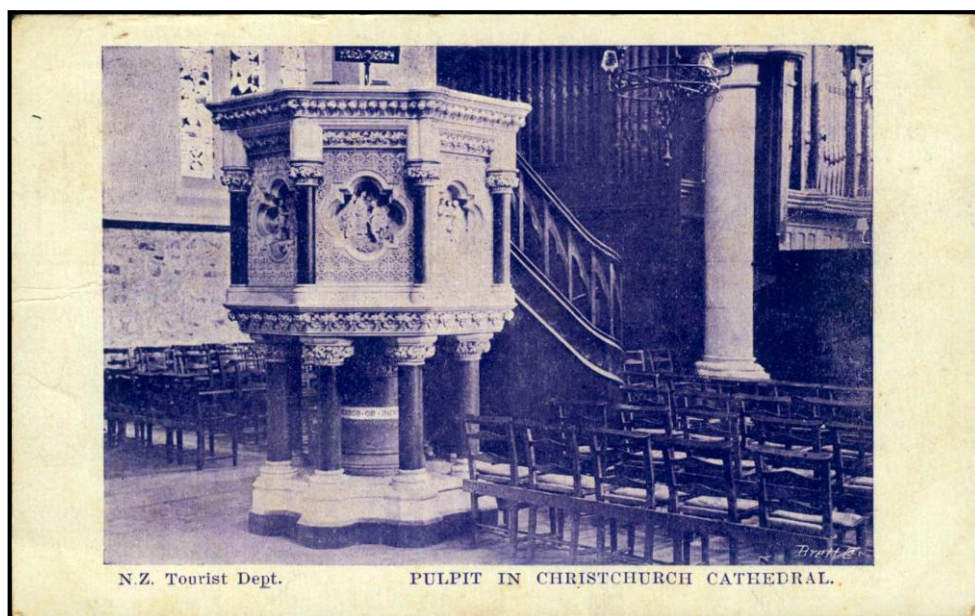


Reduced  
to 90%

*Figure 2: The Runanga House, Ruatoki*

The service was withdrawn in 1911 though I do have a card used for Christmas 1912 which, from research, was from Akito and there appears to be some possible link between the post office staff and the recipient who was a Post Office carrier in the area. Perhaps when the stock was returned to HQ as requested this one got missed!!

Information can be provided directly to John ([J-WATTS@CLEAR.NET.NZ](mailto:J-WATTS@CLEAR.NET.NZ)). It would be good if this could be copied to the editor ([kiwieditor@gmail.com](mailto:kiwieditor@gmail.com)) so we can keep members updated.



Reduced  
to 90%

*Figure 3: Pulpit in Christchurch Cathedral*

## References:

1. Ingram R., 'Christmas Greeting Postcards' 1907-10, pp9-11, *The Mail Coach*, Vol 34, Dec 1997.
2. Watts J., 'To Ron Ingram c/o the Editor', pp53-4, *The Mail Coach*, Vol 34, Feb 1998.

## FIRST PICTORIALS USED ON REGISTERED MAIL – A CORRECTION

*D R Diamond*

It was correctly reported on page 25 of *The Kiwi*, Volume 62 that I stated I had not seen a 2/- nor a 5/- First Pictorial used on a registered letter. New information and further thought requires a revision of what I said. I now believe I should have stated the following. One or two registered covers are known that display the entire set of 13 values, including the two top values. These are indisputably philatelic since there is no rate that accords with such a total of postage. However, one cover has been seen by me (see illustration) which is remarkable in several respects. Not only does it have both a 2/- and 5/- but they are accompanied by three long type stamp-duty stamps of the 1880 issue making a total face value of sixteen shillings and sixpence. It was sent from Wellington to Brussels on 24<sup>th</sup> November 1898, via London and all the instructional markings are understandable. It does not have the appearance of a philatelic item in my opinion, but why it required 16/3d postage is impossible to say. Also I have seen a second cover, registered to Germany in 1899 which carries a single 2/- adhesive on a modest sized envelope. Thus it is reasonable to assume that postage was eight times 2½d. plus 3d. for registration, making a total of 1/11d, so a 2/- stamp was used to fit the envelope size despite being one penny over-paid.

If any reader has further examples of non-philatelic use of the 2/- or 5/- on an envelope I would greatly appreciate a scan sent to [drdiamond@mac.com](mailto:drdiamond@mac.com).



*Registered cover to Belgium with 2/- and 5/- 1898 pictorials*

## WATERMARK MASTER PLATES – A NEW ZEALAND ITEM

*Paul Wreglesworth*

We are all familiar with watermarks and the frustrations associated with identifying the various types that have appeared on New Zealand stamps over the years. But how much do we know about the process used to create the watermark in the first place?

The watermark is produced during the process of paper production, when the paper pulp is run over a fine mesh drum - referred to as a 'dandy roll'. If a pattern is added to the mesh of the dandy roll then it will have an impact on the paper pulp causing a compressed area of the paper over the mesh design and a relative thinning of the paper - which creates the watermark.

Recently London dealers Argyll Etkin offered 23 lots of original watermark Master Plates made by papermakers Edwin Amies & Son Ltd. (Ref 1). Two of the lots were New Zealand related.



One of the New Zealand lots was described as:

*"NZ and Star", nine impressions as used for stamps from 1902 (S.G. w43), very fine, 53x74mm.*

(estimated at £120-150 it realised £260, plus 17% buyers commission).

The second NZ lot was for a 'Postal Note' watermark.

Background information in the catalogue provides an insight into the production process:-

*"They consist of a metal plate (1-4mm thick) with one or many impressions of the watermark made of wire and affixed to the surface. Each plate is impressed with a number, a brief entry for each number appearing in the company's ledger of these plates. The plates were pressed into wax and the surface polished with plumbago (black lead) and then scraped off leaving the design with an electrical connection. The wax was then put into a bath of copper sulphate and by electrolysis the stamp bits were grown until the watermark was ready. Hot water was poured on the surface to release the copper watermark which was then filled with solder. The electrotype was then soldered on to the dandy roll and all the pieces not required were then cut away leaving just the watermark on the surface of the dandy roll ready for the paper to be made. These plates therefore show the very first stage in the watermark production. All are unique".*

### References:

1. Argyll Etkin Limited, Worldwide Stamps and Postal History Auction, 22<sup>nd</sup> March 2013

## REVEALING HIDDEN DETAIL – A USEFUL NEW RESOURCE

*Paul Wreglesworth*

If you have ever struggled to identify a postmark, an overprint, or some fine detail of the stamp design, but been frustrated by the presence of a heavy cancellation, or other confounding marks, then there is an online analytical programme *retroReveal* ([www.retroReveal.org](http://www.retroReveal.org)) that might help.



Do not be put off by the fact that this is a sophisticated tool hosted by an academic institution, in this case Utah University's J Willard Marriott Library. Their web-site states "*retroReveal provides documentation and web based image processing algorithms designed to help people discover hidden content*". The image processing provided assumes no

specialised image editing knowledge and therefore is designed to be used by a broad spectrum of researchers. It is very simple to use and can produce some very interesting results.

If you go to the site and register (e-mail address and password) you can upload a scan of the item you are struggling with. There are a few basic guidelines that will both improve the results and, importantly, minimise the impact on the server that is hosting the programme where storage space is at a premium and speed up the computations. Firstly straighten the image and crop away any surplus background (mounts etc) and save the image, before uploading, as a TIFF or PNG file – not as a JPG file. This will ensure much better results as JPG (JPEG) files lose quality at every saving.

Once uploaded click on the image and this will open the 'channel inspector'. Click again to begin processing. Within a few seconds *retroReveal* produces a series of black and white images to review and download. The *retroReveal* website provides lots of background information to explain the manipulations that the programme performs but this will be of academic interest to most.

I have tried the programme with a number of postmarks that were giving me difficulty. I found it particularly useful with manuscript markings hidden behind heavy postmarks. I also submitted a couple of stamps with very faint 'SPECIMEN' cancels and the results are shown below (Figures 1 and 2).



*Figure 1: A 4d 'Second Sideface' with 'SPECIMEN' overprint together with two of the images produced by the 'retroReveal' process.*



**Figure 2:** A 5d 'Second Sideface' with 'SPECIMEN' overprint together with two of the images produced by the 'retroReveal' process.

I also uploaded a stamp with an O.P.S.O. overprint hidden beneath a very heavy Wellington concentric ring postmark. The processing performed by *retroReveal* certainly cleared the postmark out of the way. One of the manipulations is shown (Figure 3)



**Figure 3:** A 1d 'Second Sideface' with 'O.P.S.O.' overprint together with a 'retroReveal' image which eliminates the heavy postmark.

Whilst I found the *retroReveal* programme produced some interesting results don't expect miracles. If a postmark was poorly inked when applied then this programme will not help – it cannot find what was not there in the first place! Those who are expert in the advanced options available in photo manipulation software such as *Photoshop* may well be able to achieve similar results – in some cases. However, *retroReveal* does have the advantage of being very simple to use.

**Postscript:** In communication with the brains behind *retroReveal*, Hal Erickson of Utah University, I am told that 80% of *retroReveal*'s current user base are philatelists and account for 90% of the server load! In order to maintain access to this facility it is important that users follow the guidelines mentioned above (straighten and crop images and save as a TIFF or PNG file). Hal is hoping to move philatelic users to a customised gateway on the site and provide some philatelic tutorials so please have a look at these if you want to use this valuable resource. – PW.





# ANTARCTICA AUCTION

**“The 1901-04 British National Antarctic Expedition”  
The Large Gold Medal exhibit formed by Paul Wales  
(of Classic Stamps fame), from New Zealand, will be  
sold at Public Auction in Melbourne in early-May 2013**



1903 local cover with “Discovery” label, addressed by Lieut Ernest Shackleton, with the enclosed letter signed “EH Shackleton”. This is the only recorded **registered** cover bearing an example of the Penguin label.

The deluxe full-colour catalogue will be posted to you **FREE** on request

Click [WWW.PRESTIGEPHILATELY.COM](http://WWW.PRESTIGEPHILATELY.COM)  
Email [INFO@PRESTIGEPHILATELY.COM](mailto:INFO@PRESTIGEPHILATELY.COM)  
Post PO Box 277 BORONIA VIC 3155 AUSTRALIA  
Phone +61 3 9762 6009 Fax +61 3 9762 4009

*Prestige*  
PHILATELY

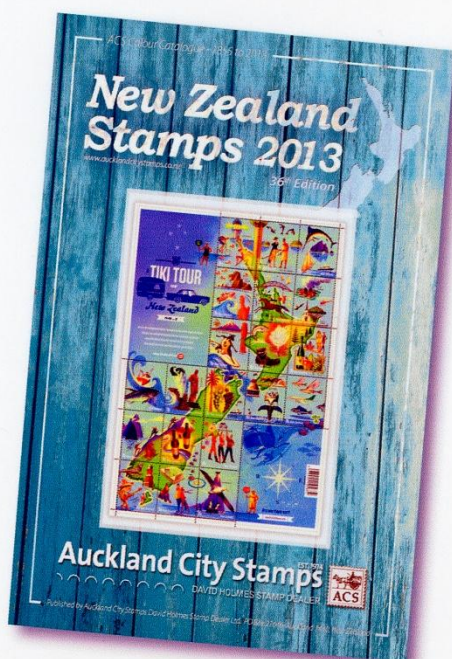
# PUBLIC & POSTAL AUCTIONS STAMPS & POSTAL HISTORY

Each year we offer thousands of items for sale via our Public & Postal Auctions and Direct Sale Lists. **Phone, email or visit our web site for more information.**

- NEW ZEALAND STAMPS
- COLLECTIONS & ACCUMULATIONS
- ESTATE LOTS
- MARITIME MAIL
- ERRORS
- WORLD STAMPS
- FULL FACE QUEEN COVERS
- VARIETIES



## 2013 Colour Catalogue of New Zealand Stamps



- Colour Photos & Prices for every New Zealand Stamp from 1855-2013
- Hundreds of Price Changes

Phone, email or visit our web site for more information.

**PHONE** +64 9 522 0311

**FAX** +64 9 522 0313

[hello@aucklandcitystamps.co.nz](mailto:hello@aucklandcitystamps.co.nz)

[www.aucklandcitystamps.co.nz](http://www.aucklandcitystamps.co.nz)

1 Ngaire Ave Newmarket | PO Box 27646 Auckland 1440 New Zealand

Dealers in fine stamps  
of the World, Specialists  
in New Zealand and the  
Pacific Islands.

## Auckland City Stamps

EST. 1974

DAVID HOLMES STAMP DEALER

