



THE KIWI



THE JOURNAL OF THE NEW ZEALAND SOCIETY OF GREAT BRITAIN

ISSN 0964 7821

VOLUME 59, NUMBER 5, SEPTEMBER 2010

WHOLE NUMBER 343

THE NEXT MEETING OF THE SOCIETY WILL BE HELD AT

LADY ANNE MIDDLETON'S HOTEL, YORK YO1 6DU

ON

SEPTEMBER 24TH – SEPTEMBER 26TH, 2010

**IT IS THE BIENNIAL STAMP WEEKEND AND A FULL PROGRAMME IS ON PAGE 92 OF
THIS ISSUE OF *THE KIWI***

TABLE OF CONTENTS

Membership	91
Next Meeting of the Scottish Regional Group	91
Next Meeting of the Northern Regional Group	91
Programme for the Philatelic Weekend	92
Next Meeting of the Midland Regional Group	92
The Society Raffle	93
The Society Competition	93
Notes of the Society Meeting held on July 31 st , 2010	93
Notes of the Meeting of the Northern Regional Group held on May 20 th , 2010	94
Notes of the Meeting of the Scottish Regional Group held on June 19 th , 2010	95
From the Committee	96
YOUR SOCIETY NEEDS YOU!	97
<i>The Kiwi</i> is now on the RPSL Database	99
Campbell Paterson's Bulletin and Newsletter	99
Campbell Paterson Catalogue for Sale	99
Presentation by and to a Member	99
Media Releases (Maori Kites, Maori Rugby, 2010 Health)	100
Publications Received (NZ Perfin, A History of Pim & Co, NZ 1d Dominion)	103
New Zealand's Rarest Stamp now at Te Papa	104
The Sale of Joseph Hackmey's Collection of Chalons (Part 2)	104
L. J. Hausburg	105
A New Watermark Variety on the 9d KGV Definitive	106
Cape Kidnappers 'Kiwi' CAL, Cinderella and First Day Cover	106
Express Delivery with Other Services	107
Wheelbarrow Mail	110
The 1911 Coronation Airmail	111
Three Cheers for New Zealand Post and None for Royal Mail!	111

The Society is affiliated to: The Association of British Philatelic Societies, The New Zealand Philatelic Federation and the Midland Federation

Annual Subscription £15.00

POSTAL AUCTIONS STAMPS & POSTAL HISTORY

Each year we offer thousands of items for sale via our Postal Auction and Direct Sale Lists. **Phone, email or visit our web site for more information.**

- NEW ZEALAND STAMPS
- COLLECTIONS & ACCUMULATIONS
- ESTATE LOTS
- MARITIME MAIL
- ERRORS
- WORLD STAMPS
- FULL FACE QUEEN COVERS
- VARIETIES



JOIN THE ACS MAILING LIST ON LINE AT WWW.AUCKLANDCITYSTAMPS.CO.NZ

2010 Colour Catalogue of New Zealand Stamps



- Colour Photos & Prices for every New Zealand Stamp from 1855-2010
- Hundreds of Price Changes, Both Up & Down

Phone, email or visit our web site for more information.

PHONE +64 9 522 0311

FAX +64 9 522 0313

hello@aucklandcitystamps.co.nz

www.aucklandcitystamps.co.nz

1 Ngaire Ave Newmarket | PO Box 27646 Auckland 1440 New Zealand

Dealers in fine stamps
of the World, Specialists
in New Zealand and the
Pacific Islands.

Auckland City Stamps

DAVID HOLMES STAMP DEALER

EST. 1974



OFFICERS OF THE NEW ZEALAND SOCIETY OF GREAT BRITAIN

HONORARY PRESIDENT

JOHN SMITH

Honorary General Secretary

Keith C. Collins
13, Briton Crescent,
Sanderstead, Surrey CR2 0JN
☎ 0208-657-4566.
e-mail: keithccollins@aol.com

Hon. Treasurer and Membership Secretary

Professor Derek R. Diamond,
9, Ashley Drive, Walton on Thames,
Surrey KT12 1JL
☎ 01932-223280
e-mail: drdiamond@mac.com

Honorary Packet Secretary

B. T. Atkinson,
77, Wood Lane,
Osterley,
Middlesex, TW7 5EG
☎ 0208 - 560 - 6119

Honorary Editor

Dr. Andrew Dove,
12, Stella Avenue,
Tollerton
Nottinghamshire NG12 4EX
☎ 01159-373762
e-mail: dove697@btinternet.com

Internet Address: <http://www.nzstamps.org.uk/nzsgb>

ENCLOSURES:

With this copy of *The Kiwi* should be enclosed:

- Information about a new publication: 'New Zealand Stamps Overprinted "O.P.S.O." by Colin Capill FRPSNZ.
- **The Auction Catalogue:** a copy of the auction catalogue will be enclosed with this issue of *The Kiwi* OR you will have received it electronically. If neither applies, please contact the Hon. Treasurer or access it via the Society website.

SOCIETY NEWS:

MEMBERSHIP NEWS:

NEW MEMBERS:

J. Harwood, Florida, USA

NEXT MEETING OF THE SCOTTISH GROUP

The next meeting of the Scottish Group will be held on Saturday, October 30th, 2010 at Ken Andison's house in Clarkestone, Glasgow, starting at 12.30.

Members are invited to bring along a display of between 10 and 20 sheets, together with any interesting new acquisitions.

NEXT MEETING OF THE NORTHERN GROUP

The next meeting of the northern Group will be held at St. Luke's Church, Orrell on Saturday, November 13th, 2010 starting at 12.00.

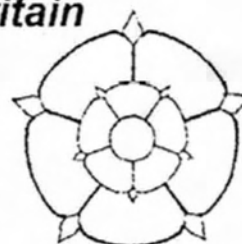
This is another member's meeting. Please bring along as much material of interest as you want.



New Zealand Society of Great Britain

York

24th – 26th September 2010



A reminder to all members that the booking form is on the Society's web page or, if you are having problems accessing this, contact **Stuart Potter**, Tel.: 01625 432808, e-mail: potter571@btinternet.com. All members already registered for the weekend should have received more information regarding the weekend programme and directions to the hotel directly from Stuart. Contact Stuart if you have not received these.

The provisional programme for the weekend is as follows:

Friday 24th	18.45	Welcome and Finger Buffet
	19.30	Captain Cook Society Presents – Alwyn Peel
Saturday 25th	09.15	Members Displays (1) Northern Group
		(2) Yorkshire Connection – All Members
11.00 Deadline for Competition Entries to Keith Collins		
	11.15	1960 Pictorials (50 th Anniversary) – Paul Wreglesworth
	14.00	New Zealand Railways – Lorraine Maguire and Others
	16.00	Competition Results and Critique – John Sussex
	19.00	(for 20.00) Society Dinner (Including Prize Raffle Draw)
Sunday 26th	09.15	New Zealand Postal Stationery – John Sussex
	11.00	Members Displays (1) 50 Years of NZ Christmas Issues (David Stalker)
		(2) Anything Goes (All Members)
	13.00	End of Weekend

We hope that as many members as possible will participate in the 'Members Display' sessions and those with significant items to contribute to the other sessions contact Paul Wreglesworth, ☎ 01625 420694, e-mail paul@wreglesworth.fsnet.co.uk so that these can be accommodated.

The 16 sheet competition will be judged by John Sussex FRPSL, a signatory of the Roll of Distinguished Philatelists and an experienced international judge. John has agreed to provide feedback on all entries which should, based on previous experience, be an excellent learning opportunity for everyone.

Ian Perry, dealer, will be in attendance during the weekend so bring your 'wants' lists with you.

NEXT MEETING OF THE MIDLAND REGIONAL GROUP

The next meeting of the Midland Group will be held on Saturday 30th October, 2010, at 14.00 in St. Annes Church Hall, Park Hill, Mosely, Birmingham B13 8EU.

Derek Diamond has agreed to show us his short display 'An Introduction to Chalons'.

The second half of the meeting will be members mini displays on any subject.

If you have any Chalons, please bring them along for discussion and to allow them to be looked at by an expert. You may be pleasantly surprised.

For further information, please contact Ian Samuel ☎ 0121 449 0849.

RAFFLE

A final reminder, particularly for those unable to attend the weekend, that a raffle will be drawn after the Society Dinner on the Saturday evening (November 25th). ***You do need to be in attendance to be in with a chance of winning.*** We have a fantastic range of prizes on offer – thanks to the generosity of a number of individuals and organisations. These include:

- | | |
|---------------------------------------|---|
| • Dealer Credit Note - £100 | • Dealer Credit Note - NZ\$200 |
| • 12 month CP Newsletter Subscription | • 12month 'Stamp Magazine' Subscription |
| • NZ 2009 Collectors Pack | • Stockbooks |
| • SG Catalogue of New Zealand Stamps | • Selection of CALs |
| • Dealer Credit Note - £50 | • The Chalon Issues (1855-1873) CD |
| • Flight covers, WWII covers | • Dealer Credit Note - £50 |
| • Dealer Credit Note - £100 | • WW II covers |
| • Book – The Summer Ships | • Antarctic Expedition – Share Certificates |
| • NZ Airmail Society Catalogue | • Several other lots of stamps and covers |

Thanks to our supporters who include: Campbell Paterson Ltd., NZPO Stamps and Collectibles, Wanganui, Mowbray Stamps, Classic Stamps, Kiwi Stamps, Stanley Gibbons, Stamp Magazine, David Holmes, Shades Stamps, Ian Perry, NZ Airmail Society, Robin Gwynn, John Watts, Brian Lythgoe, KiwiFruits, York Brewery, John & Jan Fitzpatrick, Don Scregg, Spink & Co.

Members who are unable to attend the weekend can still purchase raffle tickets with an equal chance of winning the prizes available. Raffle tickets may be obtained (£1 per strip of 5 tickets) from: **John Hepworth, 2, Carnoustie Close, Fulwood, Preston. PR2 7ER.** Cheques should be made payable to 'New Zealand Society of Great Britain'.

THE SOCIETY COMPETITION

A reminder that the biennial 16 sheet competition will be held during the York weekend. Entry forms should be requested from the Honorary Secretary. The deadline for completed entry forms is Monday, September 13th, 2010.

NOTES OF THE SOCIETY MEETING HELD IN LONDON ON JULY 31ST, 2010

The Chairman began by informing members that Len Jury was in hospital following a heart attack and that he had sent a message for a full and speedy recovery to his wife on behalf of the Society. He then welcomed two members attending for the first time – John Kersel from Wellington (NZ) and Michael Kirwan from Scotland.

Dean Curtis introduced the topic for discussion, what he referred to as the 'Fourth Pictorial Issue of 1970'. What then ensued was a lively debate about the many philatelic aspects of this set including the colourful designs, the truly vast array of errors and their causes and the overprints and surcharges.

Also discussed and displayed were the final use of counter coils, the roles of the Enshede 'posen' for paper control, the consequences of using a gum which allowed stamps to fall off the envelopes, the lack of commercial covers and how the postal authorities made a 'right royal mess' of the postafix arrangements.

Someone such as myself, unfamiliar with the issue, could not fail to be very surprised at the depth and width of philatelic interest to be derived from a modern definitive issue produced by contemporary printing technology – in this case, photogravure operated by four different printers. And there was also discussion of the error of colour of the sky on the 30 cent depicting Mount Cook National Park which is not in the Campbell Paterson catalogue (which was discussed at length in Robert Samuel's article in *The Kiwi* in 1999). That those with a blue sky are the rare error and those with a brown sky are normal says it all about this complicated and fascinating issue!

Apart from Dean, those who contributed to the display were **Maurice Allen, Michael Kirwan, Brian Stonestreet** and **Paul Wreglesworth**. The Chairman thanked them all for their valuable participation.

PUBLICATIONS AVAILABLE

Society publications are now available:

SP 1: *Aspects of Collecting New Zealand Stamps*. (Out of Stock)

SP 2: *Index to The Kiwi Volumes 1 to 50*. Printed and CD Version.

SP 3: *The Kiwi Volumes 1 - 50*. Full text on CD

SP 4: *New Zealand Stamps Overprinted "O.P.S.O."*

Price: SP 1: £10 inc. P. & P.

SP 2 & SP 3, £30 in UK and £35 overseas airmail inc. P. & P. (Society members will receive a 40% discount, i.e. £18 for UK and £21 for overseas))

SP 4: £24 incl. £1.50 P&P.

Payment accepted in NZ\$, US\$ or £St. All orders to:

New Zealand Society of Great Britain

9, Ashley Drive,
Walton-on Thames,
Surrey KT12 1JL

NOTES OF THE MEETING OF THE NORTHERN GROUP HELD ON MAY 20TH, 2010

There were nine members present and apologies from one more. At first, we discussed the arrangements for the York weekend which is being organised by the group. We look forward to welcoming the Society in September. Next, those present showed as follows.

John Atkinson showed the 1973 Railway issue with much background information on the trains illustrated.

Ian Laurie produced a jigsaw showing a map of New Zealand and New Zealand stamps. **Tony James** brought along the Regional Kaikoura booklet which was issued in March 2010 and the 1972 4c on 2½c surcharge stamp with the surcharge offset on the back. **Dave Tetley** displayed Universal Mail booklets which included illustrations of, amongst other things, mountains, animals, the Auckland Sky Tower, birds, tiki and sheep. He also showed a postcard album.

Paul Wreglesworth had a postcard sent by Dodgshun's in 1885 and a range of Dodgshun's adverts on the Second Sidefaces. He went on to show a cover from the 1960's with the 1/6 stamp with the green dots variety and mint copies of the same variety, then other covers from the period showing a coil join and a coil pair.

Stuart Potter showed early railway maps, railway covers with TPOs, Kingston Flyer covers and Universal Mail stamps showing the train. He also had three covers postmarked on the Royal Train in 1934 and a postmark with a 'N.R.' cachet. This seems to be railway related but the meaning of the initials is unknown.

He was followed by **Don Scregg** who displayed the Kermadec Islands 3d stamp showing a double transfer variety, a set of proofs of the stamp and a cover with the stamp used in 1961. He continued with Pigeon Post stamps, Cinderellas associated with the service and a flimsy. Next **John Hepworth** had a 1960's stamp selection including a 9d Flag block of 14 with missing red, a colour shift on the 1/3 Trout, the 2/6 with missing yellow and the 5d also with missing yellow.

Jack Lindley concluded the display with a showing of railway related material including TPO covers, railway newspaper stamps, railway charges stamps, poster stamps in panes and on cover.

This was another excellent meeting with a wide range of material on view. The meeting closed at 14.50.

NOTES OF THE MEETING OF THE SCOTTISH GROUP HELD ON JUNE 19TH, 2010



Figure 1: The Scottish Group Meeting

Eleven members of the group gathered at the home of John Studholme in Longniddry, East Lothian, on the afternoon of June 19th. Once everyone had gathered at around 12.30, we all enjoyed a delicious barbecue prepared by John on what turned out to be a nice Scottish summer's afternoon.

After lunch, we started the meeting proper. When we had seen some very interesting and varied new acquisitions (including a 1993 Royal Doulton stamp sheet and an actual Royal Doulton plate from **Michael Kirwan**) we moved on to the main displays.

Aileen Davies started things off with a fantastic selection of 1990 New Zealand stamp issues. This was a well displayed collection which included covers, stamps, miniature sheets and even some postcards.

Bill Black brought a small but very attractive selection of CALs and covers and a recently purchased Pigeon Post stamp.

John Studholme showed a great selection of Queen Victoria fiscal issues with a wide range of values going from a few pounds to one for £10,200. The start of the show was an 1868 ad Valorem 1% Estate Duty stamp – brown and blue imperf. on piece which was tied with foil.

Bob Clark had an extremely interesting display of New Zealand Pictorials dating from 1935 through to the 1940s. The wide range of material included a plate pair 3 of Second Pictorial 4d perf. 14 and an 8d and 4d with Waterlow shift markings.

Peter Brown displayed a wide ranging selection of Official Government stamps dating from 1900 to 1954, There was also a selection of Life Assurance issues dating from 1891 to 1981.

Keith Walker brought along a mixed selection of covers, including some nice railway and airmail items, which had been found at the bottom of a box in an auction house.

Ken Anderson showed an animal themed display. There was a surprising wide range on display in addition to the expected sheep and cattle.

David Stalker displayed his collection of the 2009 Christmas stamps which were designed by school children. He included booklets and a missing gold error on cover. He concluded with a selection of CAL produced stamps and covers.

Alexander McCulloch treated us to another display of the 1935 Second pictorials. One highlight in this excellent collection was a 1937 late printing of the ½d green with the clematis flaw.

James Smith concluded the displays with an interesting range of Airmail covers ranging from 1950 to 1959.

The dates of meetings in 2011 were agreed as: June 4th at Alexander McCullochs and a joint meeting with the Northern Group at Carlisle on October 22nd.

If you:

Need a new challenge

Have decided for any reason that you are not getting the satisfaction from your New Zealand stamp collection that you used to and would like to try a new subject/issue

- *Would like a valuation on your collection carried out by experienced staff from the worlds leading New Zealand dealers*
- *Simply need some good advice about what to do next with your collection*

Then contact us for a confidential chat and – if appropriate – a free valuation and offer.

Remember that our advice is free, draws on a wealth of experience and is given with the confident knowledge of the New Zealand market over the past 60 years as it stands at present.

For a friendly discussion, simply phone Derek Redshaw, 76 Hermitage Road, St Johns, Woking, Surrey ☎01483 833 147 or Warwick Paterson in Auckland, ☎ (toll free) 0500 893 975.

It's as easy as that and what's more, it will cost you nothing.

Campbell Paterson Ltd.

P.O. Box 5555

Auckland 1141

New Zealand

We're as far away as your own phone

FROM THE COMMITTEE

At a Committee meeting held on July 31st, the following points were discussed:

- We welcomed two new Committee members: Brian Stonestreet who has taken the role of auctioneer and John Stimpson who will be proposed as Vice-Chairman at the next Annual General Meeting.

- Following the Treasurer's review of the financial situation, the Committee agreed that the subscription should remain at its present level for 2011 but that it should be raised by a minimum of £5 in 2012 if a further deficit is forecast.
- The Committee agreed, in the light of the four forthcoming publications, to establish a publications fund.
- The Committee reviewed the arrangements for the 60th Anniversary celebrations in 2012 and added an Anniversary Meeting in London to be held in association with Australasia 2012. During 2011, a Society meeting will be held to explain and advise those without experience of exhibiting.

YOUR SOCIETY NEEDS YOU!

YOUR SOCIETY



In order to ensure a sustainable future for the Society, a group, commissioned by Derek Diamond, is evaluating the activities of the Society, recognising those things that work well and highlighting issues that we will face in the future.

In common with other Societies the New Zealand Society of Great Britain relies heavily on volunteers to undertake essential tasks in order that everyone can enjoy the benefits of membership. It is recognised that a number of key roles have been undertaken by the same individuals for many years and an element of succession planning is deemed essential to ensure that the services that they deliver so efficiently at present can be maintained in the future.

Details of two key positions, **Packet Secretary** and **Honorary Editor of *The Kiwi***, are shown below as the officers currently responsible have indicated their desire to stand down. These roles are cornerstones of the Society and it is important that we identify potential successors to Bernard Atkinson and Andrew Dove (with more than 30 years experience in these two roles between them) as soon as possible.

Both roles require a significant commitment of time on a regular basis to maintain the level of service expected by members and, with the editorship of *The Kiwi* in particular, to meet pre-set

deadlines determined by the regular publication of the Society's journal. A synopsis of the two roles is shown below and a more detailed job description can be provided on request.

A suitable handover period would be anticipated to enable the new position holders to familiarise themselves with the full roles. The committee would be open to the possibility of further developing either of the roles or, in the case of the editorship of *The Kiwi* in particular, delegation of elements of the role to other members – subject to those being co-ordinated by the Honorary Editor.

This is a great opportunity to contribute to your Society and, as full members of the committee, to influence future growth and direction.

For further information or to discuss either role further, please contact Paul Wreglesworth by e-mail: paul@wreglesworth.fsnet.co.uk or telephone 01625 420694.

JOB DESCRIPTIONS:

Job Title

Circulating Packet Secretary

Job Purpose

To manage the circulating packet on behalf of the members of the Society

Knowledge Required

A good general knowledge of the stamps and postal history of New Zealand and an appreciation of reasonable market values of material submitted for sale

Critical Qualities

- Organised/logical thinker
 - Thoroughness/meticulous attention to detail
 - Numerate
- Excellent written and verbal communication skills



Job Title

Honorary Editor of the Society Journal *The Kiwi*

Job Purpose

To manage the compilation, production and distribution * of the Society Journal

Knowledge Required

A good knowledge of the stamps and postal history of New Zealand and an awareness of the contents of other relevant journals

Critical Qualities

- Organised/logical thinker
- Highly literate
- Thoroughness/meticulous attention to detail
- Ability to work to strict deadlines
- Excellent written and verbal communication skills
- Ability to attract new/existing contributors

* Distribution of *The Kiwi* is currently handled separately.

THE KIWI IS NOW ON THE RPSL DATABASE

Readers may be familiar with the Royal Philatelic Society of London's project to develop a database of the Indexes of Specialist Philatelic Society Journals.

I am pleased to report that the Index for *The Kiwi* has now been added to this database. The Index has also been updated to include Volumes 51 to 59.4 and is completely up to date.

Plans are also in hand to re-publish the Index on CD in about 18 months time to include the first 60 Volumes and to celebrate the first 60 years of the Society's life.

The Royal database is available to all and searches may be undertaken from: www.rpslcatalogue.org.uk.

The database contains a huge amount of information and those using it should be warned that it can be very addictive!!

AD

CAMPBELL PATERSON'S BULLETIN AND NEWSLETTER

Courtesy of the National Philatelic Society, we have over 2,000 issues of the Campbell Paterson *Bulletin* and *Newsletter* available to help members fill gaps in or add to their holdings of these publications. *Bulletins* were published monthly by CP's Woking office between 1963 and 1993 (Vols 1-31, with just one issue in Vol. 31) and the *Newsletter* has been published monthly in New Zealand from June 1949 to date, the July 2010 issue completing Volume 61.

We have complete Volumes of the *Bulletin* available from Volume 4 (1966/7) to Volume 31 (1993) and of the *Newsletter* from Volume 21 (1969/70) to Volume 39 (1987/8), plus many incomplete volumes and individual issues. If you would like a full list of what is available, or have a list of issues that you want, please contact the Library Liaison Officer, Michael Wilkinson: ☎01732 456997, e-mail MWilkin799@aol.com. A contribution to Society funds of 25p per issued or £1.50 per Volume is suggested, plus postage, unless members can collect their items at a meeting. Issues still available will be offered to those attending the Society's weekend meeting in York on 24-26 September.

CAMPBELL PATERSON CATALOGUE FOR SALE

Douglas Hague has written to say that he is no longer an active collector and, therefore, no longer wishes to keep his CP Catalogue up to date (it is complete until 2009). He is looking for a purchaser.

He would be grateful if anybody interested in purchasing the catalogue would contact him directly to discuss details.

Douglas writes that he also has about 40 years worth of issue of *The Kiwi* and, similarly, if anybody is interested, can they contact him directly.

His telephone number is 01992 581372.

PRESENTATION BY AND TO A MEMBER

The Hon. Editor of *The Kiwi* presented a paper at the recent Annual Philatelic Congress in Kenilworth. The subject was the Definitive Stamps showing the head of King George V. This was accompanied by a 140 sheet display.

The talk was delivered as a Powerpoint presentation which was an interesting experience as it ensured that a considerable amount of preparation and pre-thought was required (rather than the usual ramble around the frames that feature in most presentations).

At the end of Congress, it was announced that the presentation had been awarded the Stanley Gibbons Cup for the best presentation made to Congress this year.

INFORMATION RECEIVED:

INFORMATION RECEIVED

NEWS RELEASES

Traditional Maori Kites adorn New Zealand Post Stamps

9 June 2010



Join New Zealand Post on a Journey forward to the future and back to the past – to ‘Matarika’, the dawn of the new Maori year, and to ‘manu tukutuku’, a symbol of Maori culture that has soared through the skies of history.

‘Kite traditions have a symbolic connection to Matariki,’ says James Te Puni, Marketing and Commercial Director for Stamps, Coins and REAL Aotearoa. ‘Throughout history, manu tukutuku – have been seen in many ways, including as connectors between the heavens and earth.’

‘Rich in cultural significance and an integral part of Maori folklore and rituals, manu tukutuku have played a strong part in Matariki celebrations across the country,’ says Mr Te Puni.

New Zealand Post collaborated with various designers and organisations to create the issue, including; Toi Māori Aotearoa – Māori Arts New Zealand, The Museum of New Zealand – Te Papa Tongarewa, the Auckland War Memorial Museum | Tamaki Paenga Hira, Te Puni Kokiri and Te Taura Whiri te Reo Māori.

In addition, leading traditional and contemporary weaving artist Veranoa Hetet was specially commissioned by New Zealand Post to create two of the kites featured in this issue: the Manu Pātiki and Ūpoko Tangata. The other two kites featured are from Auckland Museum Collections.

The Manu Aute, which features on the 50c stamp, was one of the largest bird-like kites. Traditionally many kites were made in the shape of birds (manu) reflecting the belief that they were linked to a person’s soul.

The \$1.00 stamp depicts Veranoa Hetet’s creation of a Manu Pātiki. This manu tukutuku resembles the kites many modern kite makers are familiar with – two rods crossed at right angles. The finished shape was likened to a flounder (pātiki).

Only four known specimens of the Manu Taratahi have survived to the present day, one of which is located at the Auckland Museum and is on the \$1.80 stamp. Manu Taratahi were named after a single plume projecting from the upper end of the kits (taratahi means end point).

The other Manu Tukutuku created by Veranoa Hetet, the Ūpoko Tangata, appears on the \$2.30 stamp. The Ūpoko Tangata were named after the plant they were made from, and as they were smaller than other kites, it is believed they were designed for younger kite flyers.

All four stamps in the 2010 Matariki stamp issue carry the name ‘Aotearoa’ as well as the standard ‘New Zealand’ identification. In addition, various products in the issue also feature the seven stars of Matariki (the Pleiades constellation).

The stamps and first day were designed by Len Hetet of Whakatane and printed in offset lithography by Southern Colour Print of Dunedin.

The full range includes 4 stamps, first day covers, a miniature sheets, presentation pack and Limited Edition publication. They will be available from the usual outlets from June 9th, 2010.



Stamps mark 100 Years of New Zealand Maori Rugby

9 June 2010



On 9 June 2010, New Zealand Post will recognise the significance of a specially commissioned centenary jersey for Maori rugby by featuring it on a 50 cent stamp. This will be one of two commemorative stamps issued to celebrate 100 Years of New Zealand Maori Rugby.

James Te Puni, Marketing and Commercial Director of Stamps at New Zealand Post said: 'Since first taking the field, New Zealand Maori teams have established a playing style and culture that is now famous around the World. We have issued these special stamps, including one carrying an image of the centenary jersey, to honour the past and celebrate the future of Maori rugby.'

The centenary jersey will be worn by the New Zealand Maori rugby team during the 100 Years of Maori Rugby Centenary Series. The design contains five elements – rauponga (parallel grooves), Tanerore (God of Haka), nga hau e wha (the four winds), te poutama (stairway) and mangopare (hammerhead shark). This unique design story represents key aspects of the nature of Maori rugby and the cultural threads that strengthen it, now and in the future.

The \$1.80 stamp carries the special centenary mark commissioned by the New Zealand Rugby Union for the 2010 centenary celebrations. The circle of life that represents all things being connected, is in the shape of a rugby ball. It symbolises the relationship or oneness between team mates and the bringing together of head, hand and heart. Two mangopare shark patterns encircle the New Zealand Rugby Union fern in the centre of the ball, acting as kaitiaki (guardians) of the fern and protecting the legacy of the New Zealand Maori rugby team to ensure a strong and proud future. The design also represents a balance between past, present and future players.

The release of the 100 Years of Maori rugby stamp coincides with the launch of the centenary jersey, celebrations and matches.

The stamps have been designed by Len Hetet and the miniature sheet and first day covers by Stamps and Collectables Business, New Zealand Post, Wellington. The stamps have been printed in offset lithography by Southern Colour Print of Dunedin. The products will be available from the usual outlets from June 9, 2010.



BUTTERFLY STAMPS HELP VULNERABLE CHILDREN TO FLY

July 7 2010



New Zealand Post continues its long tradition of supporting Children's Health Camps in New Zealand with the issue of its 81st edition children's health stamps on 7 July, reflecting the ability of every child to 'fly'.

The annual stamps issue recognises the contribution of Children's Health Camps to New Zealand Society.

This year, three beautifully illustrated 'butterfly' stamps reflect not only children's fragility, but also their extraordinary ability to emerge from the most difficult conditions and flourish as strong, independent

individuals.

Te Puna Whaiora Children's Health Camps Chief Executive Dr Fiona Inkpen says the butterfly is a wonderful symbol of the potential in every child.

'Through our services, vulnerable children, like butterflies, transform themselves – benefiting from the services of a family-focused organisation that honours their strengths and talents,' Dr Inkpen said.

Children's Health Camps have operated in New Zealand for more than 82 years, and comprise seven sites throughout the country in Whangarei, Pakaranga, Gisborne, Rotorua, Otaki, Christchurch and Roxburgh.

The camps specialise in helping vulnerable children and families who are experiencing serious inequalities and are at risk of adverse health, education, and welfare outcomes. Many have also suffered from years of trauma associated with family violence.

'We work with children and families to help them build new skills, their confidence as individuals and the stability of the family unit,' Dr Inkpen said. 'The basic premise is that the health and wellbeing of the family is the starting point for restoring the spirit of hope in the children.'

Dr Inkpen said the money raised from the stamp sales will go towards continuing the work of the Children's Health Camps throughout New Zealand.

A 10 cent surcharge is added to the stamps to help fund the health camps. In 2009 New Zealand Post presented Te Puna Whaiora with more than \$47,000 for Children's Health Camps.

The stamps and first day cover were designed by YouXD of Wellington and printed in offset lithography by Southern Colour Print of Dunedin.

The product range includes two 50 cent stamps, a \$1.00 stamp, two first day covers and an innovatively designed 'butterfly-shaped' miniature sheet. The range will be available from the usual outlets from July 7th, 2010.

PUBLICATIONS RECEIVED

NEW ZEALAND STAMPS WITH PERFORATED INITIALS

Author: R. D. Samuel, Revised by G. I. Robertson. Pub. Postal History Society of New Zealand, P.O. Box 99-673, Newmarket, Auckland 1149, New Zealand. Handbook No. 75. A4, Spiral Bound, Pp.: 90, B&W illustrations. ISBN 978-0-908588-82-4. Price NZ\$27 + P&P.

Robert Samuel published the first monograph on this subject as one of the early PHSNZ publications (Handbook No. 5) in 1968. Graham Robertson has revised, expanded and updated the publication in an admirable way.

The first three sections, on the history of Perfins in GB and NZ, and collecting Perfins, include much of the text from the original book with judicious additions and additional illustrations.

The fourth section includes detailed descriptions of all the known perfins. In total, less than 50 companies made use of the facility. This section also records the result of perusal of the Post Office authorisations lists which have led to the identification of previously unrecognised users.

Stamps with each perfin are shown and the information from Samuel's publication is much expanded reflecting the current state of knowledge. A helpful new addition is that each perfin is assigned a scarcity rating. Intermixed with the illustrations of stamps are interesting pictures of other ephemera such as the premises of D. Benjamin & Co. in Dunedin and an 1899 advertising envelope from Henry Berry & Co. with a list of Butchers' Goods for sale.

The next two sections are accounts of the perfins which were authorised but with no usage recorded and philatelic perfins. The Appendices describe the overseas usage: firstly, the GB

stamps perforated 'NZ' by the NZ High Commission in London and, in Appendix 2, non-NZ stamps perforated 'NZ'. Appendix 3 describes and illustrates New Zealand stamps overprinted with names or initials.

The book finishes with a five page comprehensive Bibliography which will be of great assistance to collectors and future researchers.

The only thing missing from the lists is any indication of the actual stamps that are known with each perfin. The comment is made that the Perfin Club of New Zealand and Australia is compiling a composite check list of known stamps for each perfin pattern. This will be a useful addition to collectors who collect the perfins as an adjunct to a particular stamp issue rather than in their own right.

The production is of the standard that one expects from the PHSNZ and, in this reviewer's opinion, is a superb example of a meticulously researched publication which records the current state of knowledge but also spurs those with an interest in the subject to look for and record further information as it is revealed.

Recommended.

AD



A HISTORY OF PIM AND COMPANY, STAMP DEALERS

Author: Brian Marshall. Pub. By the Author: bw.marshall@auckland.ac.nz. A4. Pp. 92. Colour and B&W Illustrations. Softbound. ISBN 978-0-473-15612-1. Price NZ\$40 (inc. P&P in NZ).

The history of New Zealand philately is a proud one and the support given by dealers, such as Ray Collins, is notable. One of the best known stamp dealer company names is Pim and Company. This history of the company is comprehensive and covers the publications including Catalogues and accessories as well as the formation and business activities of the company.

One of the interesting features of the trade is the inter-relationships between stamp dealers and the way that well known dealers such as Campbell Paterson and John Mowbray were associated with Pim and Co. during their careers.

This is clearly a specialised area of interest but it is comprehensive and well produced, although the quality of some illustrations is a little disappointing, and makes an interesting read. AD



NEW ZEALAND ONE PENNY DOMINION 1909 – 1926

Plate 12 Study A complete study of the 240 stamps from Plate 12 Issued from November 1909 to June 1926

Author. M. Les Camage. Published by the Author: 122, Mill Road, Kensington, Whangarei, 0112, New Zealand. A4 Plastic spiral bound. Fully illustrated in colour. Pp. 89. ISBN 978-0-473-16338-9. Price NZ\$45 inc. P&P in NZ.

This is the product of very many hours of concentrated study of the Plate 12 1d Dominion. The result is a detailed and well produced book that allows the identification of each of the 240 stamps in the sheet.

The book starts with a description of the well known major flaws and then details the various areas which showed significant variations and the stamps affected. There follows a detailed and illustrated account of each stamp position and its distinguishing features. It concludes with illustrations of the Dominion and One Penny labels variations.

This book is very well produced with well reproduced illustrations and is exactly as described and will be invaluable to any collector wishing to position his copies of the Plate 12 1d Dominion on the sheet. AD

NEW ZEALAND'S RAREST STAMP NOW AT TE PAPA



Figure 1.
Dr. Pat Brownsey, Te Papa's stamp
curator with the Taupo invert

The only survivor of the sheet of the 4d First Pictorial Lake Taupo stamp has been deposited in Te Papa by New Zealand Post.

A Press Release from Te Papa said that the stamp was formally presented to Te Papa by New Zealand Post's Chief Executive, Brian Roche, on May 17, 2010. The stamp will be immediately available to researchers and will feature prominently in a book on the 1898 issue which is currently being written. It will also take pride of place in future philatelic exhibitions, both at Te Papa and, potentially, in the wider community.

The error was not discovered until 1930 when a farmer in England came across it while searching for stamps in his childhood album to sell for cash during the Great Depression. A year later it fetched £161 at an auction in London – a large sum at the time. It was then sold to the Marquis De Rosny and did not reappear for sale until 1980 when it was sold to an American buyer by French stamp dealers for 110,500 francs (then about US\$18,000). It was subsequently referenced at a number of international shows and in sales lists until finally, in 1998, it was purchased by New Zealand Post for a record \$125,000 to coincide with a centenary commemoration reprint of the 1898 pictorial issue.

THE SALE OF JOSEPH HACKMEY'S COLLECTION OF FULL FACE QUEEN'S (PART 2) HELD IN NEW YORK ON MAY 20TH, 2010

The sale of Part 1 of Joseph Hackmey's collection of Full Face Queens was reported in *The Kiwi* in May 2009 (1). The second part was sold at Spink Shreves in New York on May 20th, 2010.

The sale included 530 lots. Of these, 87% were sold with a total realisation of about \$550,000.

A selected list of realisations follows:

Lot No.	Description	Realised (\$US)	Lower estimate (\$US)
2007	First Maori War soldiers letter dated 1846	3750	5000
2025	Original essay prepared by Perkins Bacon	4750	6000
2034	SG 1 FU	9000	5000
2046	1855 Letter to Alnwick, Northumberland with pair SG1	28000	25000
2090	2d blue, horizontal strip of 5: FU. SG 10	2000	500
2124	2d blue: letter dated 1859 with 6 copies of SG 9.	2200	1500
2126	1860 large part entire with 1d orange (SG 8), 2d blue (SG 9) , 6d brown (SG 13) + GB 1d red to pay for re- direction	2200	2000

2138	1d dull orange: horizontal pair with pin-roulette 9-10 at Nelson. FU - ?unique. CP A1d(X/V)	5750	7500
2153	1d carmine-vermilion blk. 6 Mint. SG 35	2200	2000
2194	'SAVED FROM COLUMBO' cover with 6d and 1s stamps. SG 41, 44	1600	500
2195	'SAVED FROM COLUMBO' cover with 1d. SG 33	850	1000
2204	1d vermilion horizontal pair roulette 7 at Auckland with full strike '5/Otahuhu' Maori Wars cancellation. SG 48	800	1000
2207	2d blue roulette 7 at Auckland. SG 51	600	300
2226	2d deep blue serrated perf. 16/18 at Nelson. FU. SG 60	2100	500
2313	1s blk. 6 FU. SG 100	1600	2000
2329	1s used example with huge margins all round. SG 104	1200	500
2339	1d carmine-vermilion, blk. 18. Mint. SG 110	2100	2000
2399	1869 HMS Blanche cover to Wisconsin with 1s yellow-green (SG 125) (ex. Woolfe)	1900	2000
2460	1d brown, perf. 12½. Mint blk. 4. SG 132a	1050	750
2464	2d orange perf. 12½. Mint blk. 4. SG 133a	700	750
2491	1d brown with newly described script watermark. SG 137a var. ?Unique	2000	1000
2521	1929 Sample sheet showing four strikes of altered NZ Chalon dies	950	200

A number of important items did not sell including SG1, SG2 and SG3 mint, an 1858 1s bisect on cover, a mint 1862 3d Lilac on Pelure Paper and a pair of 1866 military covers to and from Pte. John Penley at New Plymouth.

NOTES ON A PREVIOUS ARTICLE:

L. J HAUSBURG

First an apology for accidentally omitting the name of the author from the article entitled which was published in the last issue of *The Kiwi* (1). It was **Dean Curtis**.

Secondly, thanks to Bob Odenweller and Gerald Elliott who both wrote to point out that Hausburg's name is spelled with a 'u' and not an 'e' as in the article.

Gerald Elliot also provided the following extract from the British Philatelic Trust website (2):

HAUSBURG, Leslie Leopold Rudolph 1872 – 1917. Educated Clifton College. Hon. Secretary RPSL 1913-1917. Member of Expert Committee. Made plating studies of Victoria, Peru, Mexico and Venezuela. Joint author with CSF Crofton and C Stewart-Wilson of RPSL Handbook on The Postage Stamps and Telegraph Stamps of British India, 1907. Vice-President Philatelic Society of India. His collection of India passed into the Royal Collection, 1916. When in New Zealand, he discovered the original plates from which the first stamps of that country were printed. He was a leading tennis player.

References:

1. Anon. 'Wilde about Hausberg' *The Kiwi* (2010). Vol. 59. No. 4 Pp. 85-87.
2. <http://www.ukphilately.org.uk/bpt/whowaswho/whowaswho-htm>

ORIGINAL CONTRIBUTIONS:

A NEW WATERMARK VARIETY ON THE 9^D KING GEORGE V DEFINITIVE

A member of the Society has reported that whilst sorting through a bulk lot of King George V 9d Definitives, he discovered a used example with the watermark inverted.

He says that the watermark is clear and inverted and that the shade appears to be sage green. The perforation is 14 x 13¼ and the stamp is sound and well centred.

The postmark is a parcel cancellation with an open clear part of it on the stamp which shows part of the external oval boundary of the canceller and the year – 1934. Unfortunately neither the date nor the post office of origin is visible.

The paper shows some vertical ribbing and appears to be of the Esparto variety which the Handbook (2) states was in use after 1933.

One would assume that this may have come from the 1923 production of the value which was perforated 14 x 13¼ throughout. It would be interesting to see whether any further copies come to light and if so, whether any are perforated 14 x 14¼ showing this sheet to have come from an earlier printing.

Interestingly, this is the second inverted watermark variety to be reported comparatively recently on this issue. In a note in the *New Zealand Stamp Collector* in 1992 (1), Ken McNaught reported the first example of the recess-printed 1½d with the watermark inverted. This copy was also used and was perforated 14 x 14¼. No further copies of the 1½d have yet come to light although, of course, at least another 119 must have existed at some time.

It does seem extraordinary that a major variety of this nature can come to light for the first time 95 years after the stamp was first issued. Hopefully, this report will encourage others to look at their copies of this stamp more carefully.

Reference:

1. McNaught KJ 'New Watermark Variety'. *The New Zealand Stamp Collector* (1992). Vol. 72. No. 4. P. 149.
2. Ed. Collins RJG and Fathers HTM '*The Postage Stamps of New Zealand*' Pub. The Philatelic Society of New Zealand Inc (1939). P. 316

CAPE KIDNAPPERS 'KIWI' CAL, CINDERELLA AND FIRST DAY COVER

ROBIN STARTUP



Figure 1: The CAL (125%)

New Zealand Post's introduction of CALs (=Customised Advertising Labels) for privately designed and issued postage stamps has opened the door to some rather interesting items. It has given the opportunity to the individual who may have thought the official issues bland or uninteresting to come up with their own ideas, for any organisation or group to be able to promote their own activity, and for the businessman to advertise his shop, his products, or his ideas, on his outward mail.

Philatelist John Campbell of Hawkes Bay is one who has developed his ideas to a CAL that promotes the Te Matau a Maui Sanctuary. At Cape Kidnappers and area

has been fenced off with a 15km long fence line to protect endangered native birds including the Kiwi, a fascinating flightless nocturnal bird which has become the symbol for New Zealand. How many readers have seen a Kiwi in the wild? The depredations by mankind and their dogs has largely reduced Kiwis to life in protected sanctuaries.

The first postage stamp to feature the Kiwi was in 1898 in the pictorial series. The Kiwi has appeared in several issues since and today is used by New Zealand Post to identify reprints of standard stamps.

For his Kiwi design John has arranged for well known artist and author, Dick Frizell, to prepare an attractive Cinderella featuring a joyous Kiwi examining a postage stamp with the aid of a magnifying glass.

In turn this Cinderella has become the basis of an eye-catching design of a CAL. An interesting feature of the CAL is that the initials J and C have been placed in the top left and right corners – reminiscent of years gone by when the first postage stamp, the 1d Black, carried corner letters to identify the position of the stamp in the printed sheet.

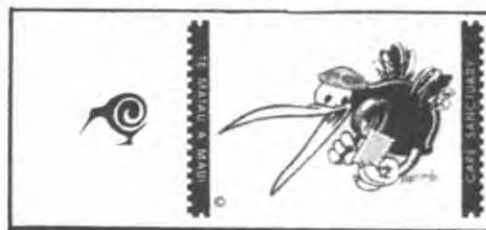


Figure 2: The Label



Figure 3: First Day Cancellation

The CAL was officially issued on July 19th with a special First Day of Issue cancellation featuring a Te Matau a Maui (the hook of Maui) logo applied to covers. The logo consists of a stylised Kiwi with its body curled into a hook shape. In the Maori origin-of-land legend the Maori ancestor (Maui), whilst fishing off Waipounamu (the South Island) hooked and drew Te Ika a Maui (the North Island) to the surface. In mythology Maui's fish-hook is represented by Cape Kidnappers – the Cape named by Captain James Cook on his first voyage of exploration in 1769.

EXPRESS DELIVERY WITH OTHER SERVICES

ROBERT P. ODENWELLER, RDP, Hon. FRPSL, FRPSNZ



Figure 1:
The U.S. Express Delivery Stamp (125%)

Although Express Delivery was initiated in New Zealand on January 1st, 1901, with the introduction of the Universal Penny Postage, the public response was not encouraging. To make the service better known, authorities felt that a distinctive stamp was needed. The 1885 'Special Delivery' issue of the United States (Figure 1) furnished some design suggestions. The legend 'Secures immediate delivery at a special delivery office' was copied unchanged, even though it was not to be known as 'special delivery' in New Zealand.

The stamps were designed and printed by the Government Printer in January 1903, with 2,000 sheets of 60 stamps each. With 36 stamps damaged, the total printing came to 117,840 stamps, perforated 11. Unfortunately, the stamp was so little used for its intended purpose that the supplies lasted for 23 years.

The original plate was inadvertently destroyed in 1925. Using what he thought was a discarded plate, a workman planed it to make the 'Map' stamp thus destroying the original 'Fernleaves' plate. The value plate was never found and is presumed to have been melted down.

New plates were made in 1926 and a supply of 85,760 stamps perforated 14 x 14½ on Cowan paper produced. A further printing in December 1935 yielded another 24,000 stamps which were perforated 14 x 15, again on Cowan paper. Two further printings on Wiggins Teape paper

followed. The remaining stocks of this design were destroyed on August 15 1939, the day before the 'Motor Car' express delivery stamp was issued.



Figure 2: Express Delivery Letter for Delivery within Wellington

The two 'Fernleaves' covers shown here feature a number of charges. The first (Figure 2) was mailed from Wellington on 25 September 1916 and is addressed to Washington Avenue, Brooklyn, City. It is no surprise that the words 'Washington' and 'Brooklyn' (presumed to be the famed borough of New York City) would be assumed to apply to a letter to the United States; an American dealer analysed the cover as overpaid sea mail, ignoring the 3d postage due. It is somewhat more interesting than that. 'City' referred to Wellington, in which there is a Washington Avenue in the area south of the town centre known as Brooklyn, just south of central park. The mileage from Wellington Post Office is something more one mile, which affects the postage. The cost of Express Delivery service was 6d for the first mile and 3d for subsequent miles. The letter was posted at 12.20, but the 3d due was applied 40 minutes later, when the additional mileage was calculated. The Express Delivery stamp is, of course, from the original printing and the first-type due stamp was used, since the next design did not appear in that denomination until 1928.

The maximum distance for express mail delivery was three miles, and envelopes were to have two vertical parallel lines drawn across the front and the back of the envelope. Delivery was made by telegraph messenger boy, unless specifically directed that delivery be made at a Post Office, and no delivery was made on a Sunday.

The second cover (Figure 3) is more straightforward, even if it does combine four postage rates. The double parallel lines are accompanied by crossed lines, the latter of which signify registry. Etiquettes for air mail, registration and express delivery are all included (which although intended is not often observed in practice). The letter was mailed in Palmerston North at 3 p.m. on 26 February 1937 and arrived in Christchurch at 1 p.m. on 27 February.

The postage includes 1d for the letter, 1d for the airmail supplement, 3d for registration and 6d for express delivery. One may understand the urgency of the letter by the 'message' implied in the address 'Magistrates Court'. The 6d Express Delivery stamp is from the small printing of 24,000 perforated 14 x 15 on Cowan paper.

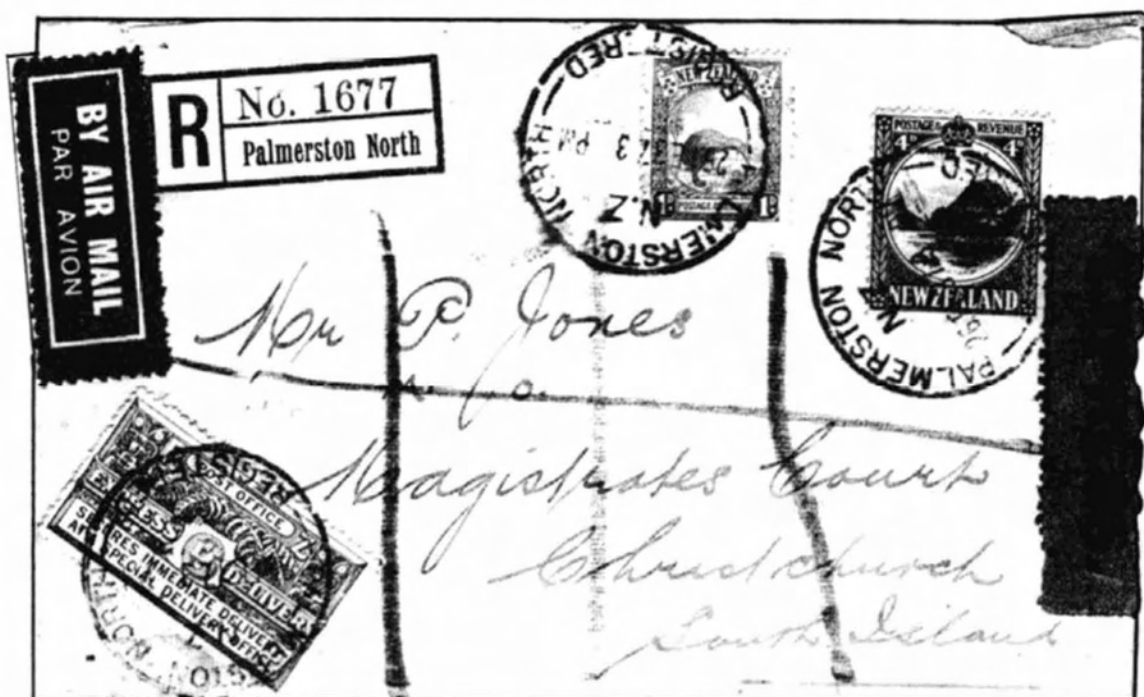


Figure 3: A Registered Express Delivery Letter

The 'Fernleaves' express delivery stamps were replaced on 16 August 1939 (Figure 4). Although the new 'Motor Car' design was intended for express delivery, all of the express delivery stamps were valid for regular postage. This first day of use cover is unusual, but philatelic, since no agreement could be obtained for express delivery overseas, except for Great Britain. As a result, the decision was made to keep the service internal.

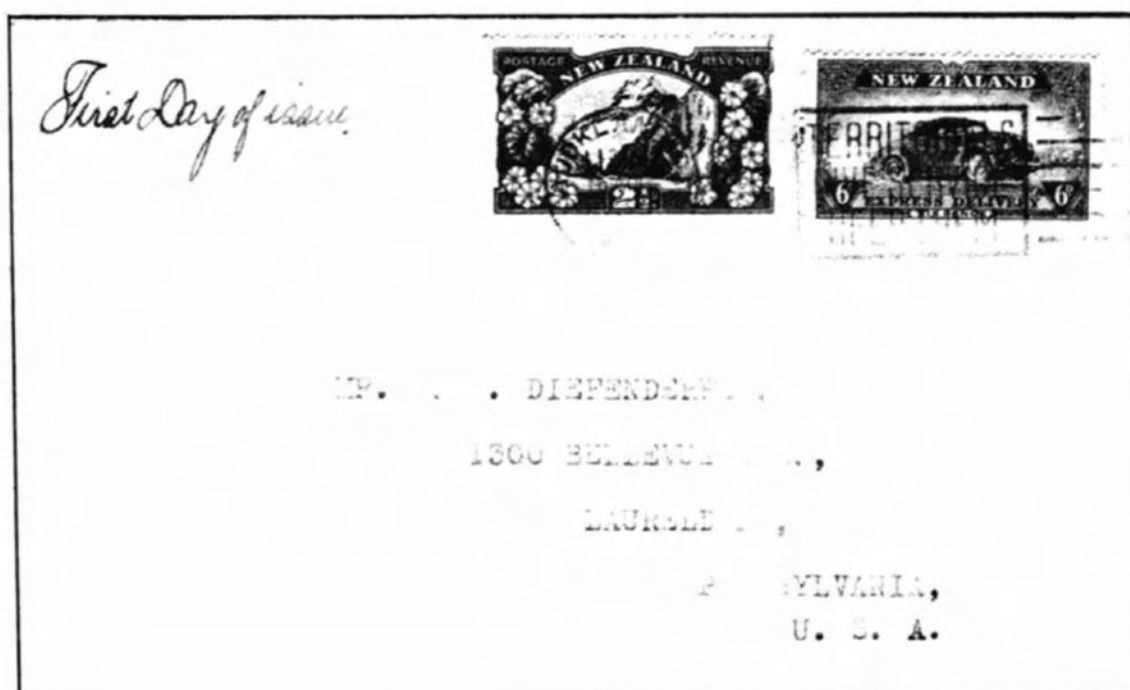


Figure 4: First Day Cover of the Express Delivery Stamp showing the specially designed blue Royal Mail streamlined airmail van

Express delivery stamps and the provision for express service ceased on 30 June 1948.

Details of the stamp design and printing were provided by *The Postage Stamps of New Zealand (Vol. 1)*. Pp. 424-429 and Campbell Paterson's Catalogue of New Zealand Stamps, Section U.

WHEELBARROW MAIL

JOHN WATTS

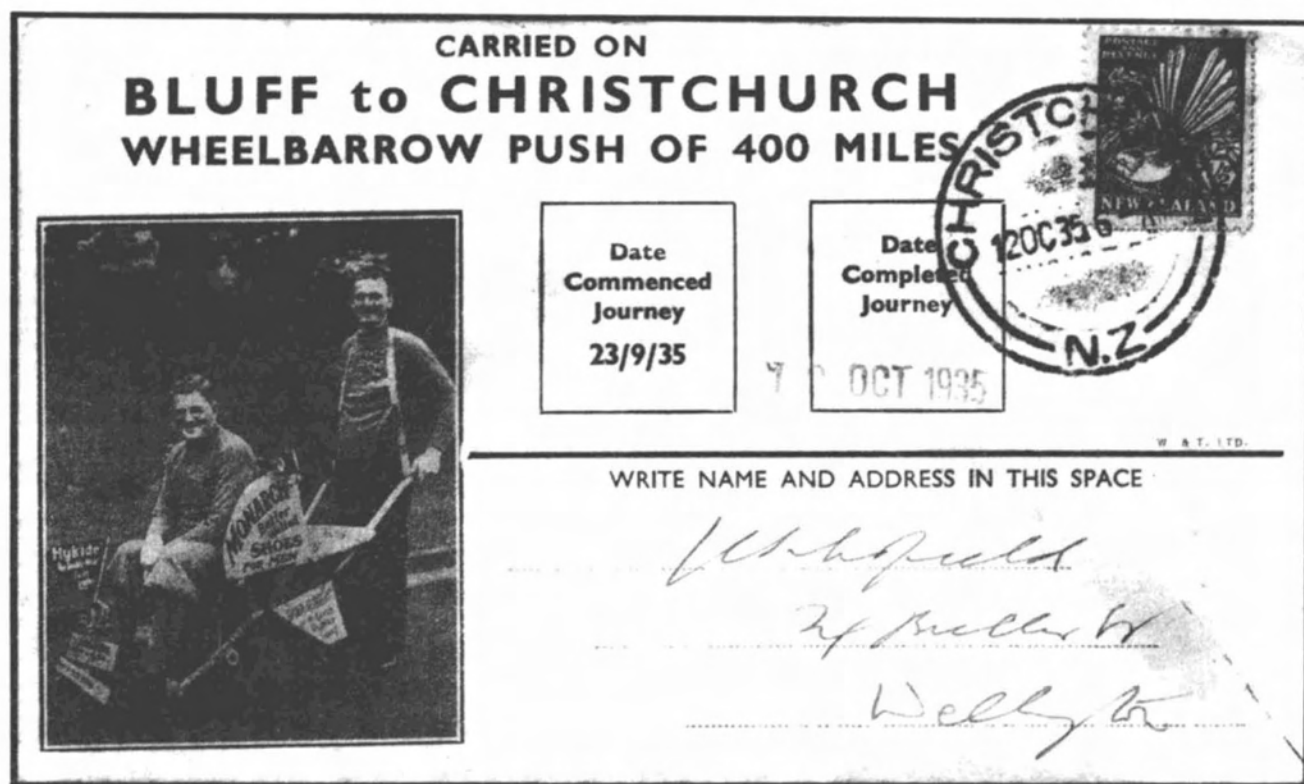


Figure 1: A Cover carried on the Wheelbarrow Push

The height of the Wheelbarrow craze in New Zealand was reached in about 1935. That was the year that two young men who had already completed a journey through the North Island arranged to test their endurance with a further trek between Bluff and Christchurch in the South Island – a distance of about 400 miles.

A well known New Zealand cyclist, L. G. Lukey acted as the pusher and U. Scholefield was the passenger.

To commemorate the event, the promoters arranged with the New Zealand Post Office to allow for the carriage of mail. Special pictorial envelopes were prepared and sold for 1s each.

The journey began at Bluff on September 23rd and was completed at Christchurch on October 12th. The mail carried consisted of 800 envelopes and was handed over to the postal authorities in Christchurch where it was handstamped at 6 a.m.

The event did not start a new mail delivery craze at the time and could not compete with the interest of mail that was being carried by air transport.

But 75 years later, these covers still turn up in auction lists.

For further information see *The New Zealand Stamp Collector*, Volume. XVI No. 4 (December 1935) P. 74.

THE 1911 CORONATION AIRMAIL

ROBERT CLARK

About 4 years ago, Lewis Giles wrote about the 1911 Coronation Airmail (1) and described the 31 cards that were known at the time which were addressed to New Zealand residents.

I have recently acquired a further example, the front of which is illustrated in Figure 1. The card is in red-brown and was posted on SP 11. It is addressed to Mrs. Arthur Pearce, Hobson Street, Wellington, New Zealand. It has been franked with 2 x ½d KG stamps.

A curious feature is that in the list on the reverse headed 'Where to Purchase and Post', there appears to be an added name 'Ropers' which seems to have added in a second printing operation after the card was produced. It is printed in black rather than the brown of the remainder of the text.



Figure 1: 1911 Coronation Postcard addressed to New Zealand

Reference:

1. Giles L '1911 Coronation Airmails to New Zealand' *The Kiwi* (2006). Vol. 55 No. 4. Pp. 89-92

THREE CHEERS FOR NEW ZEALAND POST AND NONE FOR THE ROYAL MAIL!

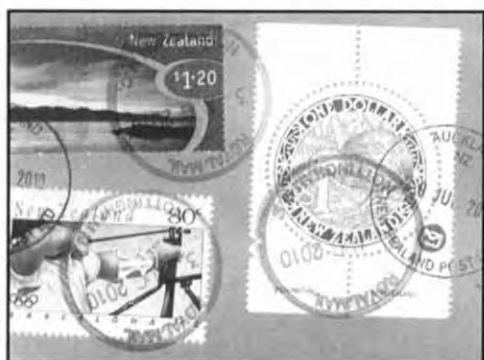


Figure 1: On Recently Received Mail

Over the years, there have been adverse comments in *The Kiwi* about the quality of cancellations applied to stamps. Recently, I received an auction catalogue from Len Jury which was franked as shown in Figure 1. Len had taken trouble to use attractive commemorative stamps and New Zealand Post had also taken the trouble to cancel them carefully using a metal canceller and leaving them suitable for even a fussy philatelist. However, I am unable to understand why Royal Mail felt compelled to cancel each stamp with a disfiguring splodgy rubber datestamp.

Selling in September...

**Our Autumn Auctions are now building —
please contact Ken Baker or Ian Kellock to consign
to a specialised Cavendish Sale.**

**Catalogues online also at
www.cavendish-auctions.com**



Cavendish House, 153-157 London Road,
Derby UK DE1 2SY.

Phone: 01332 250970 Fax: 01332 294440

Email: stamps@cavendishphillauc.demon.co.uk

www.cavendish-auctions.com

