



THE KIWI



THE JOURNAL OF THE NEW ZEALAND SOCIETY OF GREAT BRITAIN

ISSN 0964 7821

VOLUME 55, NUMBER 3, MAY 2006

WHOLE NUMBER 317

THE NEXT MEETING OF THE SOCIETY WILL BE HELD ON MAY 27TH 2006
AT THE UNION JACK CLUB, SANDELL STREET, LONDON STARTING AT 11.00.

THE MORNING IS AVAILABLE FOR THE DISPLAY OF INTERESTING NEW
ACQUISITIONS. THE MAIN MEETING WILL START AT 14.00 AND WILL BE ENTITLED

'IT PAYS TO ADVERTISE'

(SEE PAGE 50 FOR FURTHER DETAILS)

TABLE OF CONTENTS

Next Meeting of the Society	50
Rearranged Meeting of the Midland Group	50
Next Meeting of the Northern Regional Group	50
Next Meeting of the Scottish Regional Group	50
The New Zealand Philatelic Weekend 2006	51
A Note from the Hon. Secretary	51
The Library	52
The Annual Auction	52
Notes of the Meeting of the Society Held on March 11 TH 2006	52
Results of the Biennial 16 Sheet Competition	53
Notes of the Meeting of the Western Group Held on February 25 TH 2006	54
Notes of the Meeting of the Northern Group Held on February 18 TH 2006	55
Obituary: John Woolfe	56
Press Releases (Anniversary of Hawke's Bay Earthquake, New Zealand's Natural Beauty, Changes to Postmarking of Mail by New Zealand Post)	57
Coming Events (Kiwipex 2006, Northland 2007)	61
The Sale of the Sir Gawaine Baillie Collection of New Zealand Stamps	61
Special Publications – A Reminder	64
A Correction to the Meeting Report of the January Meeting	64
The 'PAID ALL' Marking	64
The Christchurch Exhibition Cancellation	65
The Chinese and the Goldfields	65

The Society is affiliated to: The Association of British Philatelic Societies, The New Zealand Philatelic Federation and the Midland Federation

Annual Subscription £15.00

OFFICERS OF THE NEW ZEALAND SOCIETY OF GREAT BRITAIN

Honorary General Secretary:

Keith C. Collins 13, Briton Crescent,
Sanderstead, Surrey, CR2 0JN,
☎ 0208 - 657 - 4566

Honorary Packet Secretary:

B. T. Atkinson, 77, Wood Lane,
Osterley, Middlesex, TW7 5EG
☎ 0208 - 560 - 6119

Honorary Treasurer:

E.W. Leppard, 68, Chestnut Grove,
Balham, London, SW12 8JJ
☎ 0208 - 673 - 4710

Honorary Editor:

Andrew Dove, 12, Stella Avenue,
Tollerton, Notts NG12 4EX
☎ 0115 - 937 - 3762
e-mail: DDOVEAF@AOL.COM

Internet Address: <http://www.cs.stir.ac.uk/~rgc/nzsgb>

ENCLOSURE

There is one enclosure with this issue of *The Kiwi*:

❖ The Booking Form for the Philatelic Weekend

If it is missing, please contact the Hon. Secretary.

SOCIETY NEWS:

NEXT MEETING OF THE SOCIETY

The next meeting of the Society will be held at the Union Jack Club on May 27th. The subject is '**Advertising Covers and Stamps**'. Paul Wreglesworth will lead with an update on his investigations into the companies that advertised on the Second Sideface Adsons but it is a much bigger topic than that. The New Zealand Post Office – and its successor alternative post operators - have long led the world in using stamps and other postal items as an advertising medium. From advertising envelopes to slogan cancellations, tourist seals to Health Stamps and TB Seals, the selvages of booklet panes to stamps with tourist scenes on sale at the tourist site, the amount of ingenuity has been consistently impressive. We want to see them all at the meeting. So – look through your treasures and bring something along.

REARRANGED MEETING OF THE MIDLAND GROUP

Due to unforeseen circumstances, the meeting of the Midland Group scheduled for March 25th, 2006 has had to be postponed. It has been rearranged to **Saturday 6 May 2006** at Carr's Lane Meeting Centre. Please make every effort to come. The subject remains 'The letter 'M''. If you can come please let Bernard Symonds know. ☎ 01926 813985.

NEXT MEETING OF THE NORTHERN REGIONAL GROUP

The next meeting of the Northern Regional Group will be held at the usual meeting place at St Luke's Church, Orrell at 13.30. Keith Collins the Honorary Secretary, will give a display entitled 'The Life and Times of the Second Pictorial Issue'.

NEXT MEETING OF THE SCOTTISH REGIONAL GROUP

The next meeting of the Scottish Group will be held at the ASPS Congress in Perth on Saturday April 22nd, 2006. We will meet at 12.30 on the balcony overlooking the display area.

The summer meeting will be held at John Studholmes house on Saturday June 17th at 12.30.

For further information, contact the Scottish Group Co-ordinator Bill Black ☎ 01506 652492.

THE NEW ZEALAND PHILATELIC WEEKEND 2006

TO BE HELD IN COVENTRY BETWEEN SEPTEMBER 29TH AND OCTOBER 1ST

This years Society philatelic weekend will be held at the Courtyard by Marriott Hotel near Coventry between September 29th and October 1st. For those arriving by rail or air, the hotel uses a taxi firm, Prestige Taxis. Use of this company will guarantee a fixed price. Full directions to the Hotel will be published in *The Kiwi* : it is very accessible via the motorway system and has ample car parking space.

The programme is still being developed but will start with a buffet and display on Coventry Postal History on the Friday evening. Hopefully, Saturday morning will be taken with displays from overseas members and the afternoon with Members Displays. Sunday morning we hope to have another overseas display and will end before lunch with a further session of Members displays. The full programme will be published in *The Kiwi* prior to the weekend.

Sunday lunch will not be provided as part of the weekend but arrangements can be made by Bernard Symonds for reservations at a local Public House.

A feature of previous weekends has been the fantastic range of members displays as well as those from overseas and we very much hope to continue this tradition. Members are invited to show any items of New Zealand interest including Stamps (Chalons – Moderns); Postal History and Stationary; Airmails; Fiscals; Postage Due; Healths; Commemoratives. In fact, anything of interest.

The frames hold 9 sheets and members are invited to let the organiser, Bernard Symonds, know if they are bringing along a display. In the first instance, please plan for 27 sheets but this may be increased or reduced at the organisers discretion.

We also plan to hold a raffle to try and generate some funds to cover the cost of the weekend. This will be important to the financial success of the event. Philatelic and non-philatelic items are needed to be used as prizes. If you can contribute something, please bring them along to the event or send them to John Tyler, 14, Berrow Court, Gardens Walk, Upton-on Severn, Worcs. WR8 0SP. Tickets are also available from the same address at £1 each or 6 for £5.

For those accompanying members to the weekend, there are a number of local attractions. These include:

Shopping in Birmingham

Antique shopping in Warwick and general shopping in Leamington Spa

Warwick Castle

Historic Stratford with its association with Shakespeare

Ryton Organic Garden Centre

Hatton Farm Garden and Craft Centre

Baddesley Clinton Elizabethan House (National Trust)

If there is sufficient interest, a tour of Rugby School could also be arranged.

The booking form is enclosed with this issue of *The Kiwi*. Please book early: it promises to be as enjoyable as the previous weekends.

For further information or queries, please ring Bernard Symonds ☎01926 813985

A NOTE FROM THE HONORARY SECRETARY

If any recently joined members requested a copy of *The Philatelic Miscellany* when they joined and have not yet received it, can they please contact Keith Collins who will arrange delivery.

Also, if any vendors in last years auction are awaiting the return of unsold lots, can they contact Keith.

THE LIBRARY

Following the death of John Woolfe, the Librarian of the Society, members are asked to note the following:

- 1) Any books on loan should be returned to Professor Derk Diamond, 9, Ashley Drive, Walton-on Thames, Surrey KT12 1JL, when finished with and, in any event, not later than July 31, 2006, when a full stock-taking will be undertaken.
- 2) No further loans are possible until after July 31, 2006.

Any person or philatelic organisation wishing to have their publication reviewed in *The Kiwi* should continue to send such items to the Editor.

THE ANNUAL AUCTION

Following the appeal in the last issue of *The Kiwi*, the Committee is pleased to confirm that the Society Auction will take place at the meeting to be held on November 11th. Full instructions and terms of the sale will be published in the next issue of *The Kiwi* but if you want to enter material, you should be thinking about it now.

Lists of lots should be sent to the Hon. Editor of *The Kiwi* to arrive no later than first post on August 18th. No lists received later than this date will be included. Each lot must state the vendors reserve price. No market estimate is required. Do not send items for sale to the Editor – only the description of each lot. The minimum reserve is £3.00.

There will be a limit on the number of lots accepted so it will pay to get your descriptions in early.

Lists may be sent at any time from the receipt of this issue *The Kiwi* to the Hon. Editor.

NOTES OF THE MEETING OF THE SOCIETY HELD ON MARCH 11TH 2006

The 15 members who had gathered at the Union Jack Club by 11.30 decided to use the hour before lunch to discuss the spate of auctions of New Zealand philatelic material that had taken place in London in the previous 2 weeks, namely the Sir Gawaine Baillie collection at Sotheby's and major auctions at both Grosvenor and Bonham's. Both of the latter had substantial sections of New Zealand material. When the experience of the different participating members was compared it was concluded that although there was undoubtedly an 'investor' influence present at Sotheby's, it was also agreed that quality material had unquestionably risen sharply in price.

The afternoon session began with the Chairman introducing Alan Griffiths, the competition judge. This was followed by tributes to John Woolfe by the Chairman and Dr. Robin Gwynn who called John 'a formidable philatelic researcher'.

While awaiting the deliberations of our judge, members showed items of interest and raised some intriguing questions. **Robin Gwynn** showed the very recently issue sheet of New Zealand stamps issued to commemorate the 75th anniversary of the Napier earthquake of 1931. He noted that it would be last time that survivors were likely to be present in some numbers and described some of the celebrations that had taken place. In addition, he presented the society with 2 First Day Covers signed by the Mayor of Napier. These will be offered in the next society auction.

Maurice Allen showed a postwar first flight cover to the United States that appeared to commemorate the wrong aeroplane and have paid the wrong rate in stamps.

Lew Giles showed 1911 Coronation airmails sent to New Zealand and reported that he had traced 30 covers, substantially more than had previously been reported. He also showed a display of 'Goldfield' covers that he had intended to enter in the competition but that he had missed the deadline! As this frame will now form part of the Kent Federation entry for the Dawes Cup, we wish him good luck second time around.

Derek Diamond showed two second sideface covers that aroused his interest following Paul Wreglesworth's display at the previous meeting. The first cover was registered to Brazil in 1883 with a one shilling stamp but with no blue lines. The other cover was posted in 1897 also registered with stamps amounting to one shilling and one penny. This rate was explained by 3d registration fee, 2½d for Advice of Delivery (a boxed AR was clearly visible) and triple rate postage (3 x 2½d). In discussion, Paul Wreglesworth stated that although the AR scheme had begun in 1891, he was aware of only 3 such covers in the period 1891-1898. It would be interesting to find the earliest surviving AR cover. Could any member with a pre-1897 AR cover posted in New Zealand please send the Editor of *The Kiwi* an illustration of it.

Following viewing of the competition entries, presentation of awards and judge's comments, the Chairman thanked Alan Griffiths for his careful appraisals, advice and encouragement. He also thanked every entrant. A valuable suggestion was then made by a member who had travelled to London from Lancashire. It was warmly supported by all present – namely that the biennial 16 sheet competition should henceforth form part of the philatelic weekend which is also held in alternate years and arranged in rotation by the Regional Groups of the Society. The Chairman promised to seek the approval of the Committee for this promising innovation at their next meeting in July.

RESULTS OF THE 2006 BIENNIAL 16 PAGE COMPETITION

The competition was judged by Alan Griffiths.

The winner of the Gordon Kaye Plate for the best overall entry was **Paul Wreglesworth**.

Competitor	Entry Name	Marks	Award
Classic Class			
Don Scregg	Proofs and Stamps of the Christchurch Exhibition	90	Gold
Ernie Leppard	1d Lake Taupo	81	Silver Gilt
Derek Diamond	First Pictorial – The Second Local Printing	84	Large Silver Gilt
Paul Wreglesworth	Second Sidefaces – the 2½d Value	92	Gold
Modern Class			
Paul Wales	1954 QEII Official Stamps	86	Large Silver Gilt
Philip Hoare	2/- Captain Cook – A study of Plate 1 Row 1	82	Silver Gilt
Ernie Leppard	Proof Material of the 1d Universal 1901-1908	88	Large Silver Gilt
Maurice Allen	1d Dominion Plate 13 – Various positional Flaws	82	Silver Gilt
Maurice Allen	1970 Pictorial Issue - ½c – 7½c Flaws and retouches	77	Silver Gilt
Alan Baker	James Berry – Designer of Health Stamps	79	Silver Gilt
Postal History			
Ernie Leppard	World War II – POW Mail	78	Silver Gilt
Thematic Class			
Maurice Allen	Penguins of New Zealand	75	Silver Gilt
John Hepworth	Mount Egmont	79	Silver Gilt

Aerophilatelic Class

David Bradbury	First Flight Covers	79	Silver Gilt
Maurice Allen	The South Island Opened up by Airmail	85	Large Silver Gilt

NOTES OF THE MEETING OF THE WESTERN GROUP HELD IN TAUNTON ON FEBRUARY 25TH 2006

Paul North welcomed 8 members to the meeting. Prior to the displays, he asked for 2 or 3 members to assist in running the Western Regional Group. Evan Williams agreed to act as Chairman at future meetings and Alan Deal would join as the third committee member. The members agreed that the venue was suitable and that the next meeting in the autumn would be held there.



Figure 1: Paul North in the Chathams!

Paul North opened the displays with his Chatham Islands collection. This started with the first 'killer' cancellations and went right through to the 'First to See the Sun' cancellations of the Millennium Year. Several covers from the short lived Post Office at Owenga were shown including one with a C.D.S. of the day before the official opening. Covers with 3 different cancellations in which either N.Z. was missing or Waitangi or Chatham Islands were absent were next with a bisected stamp cover similar to that illustrated in Robin Startup's book 'Chatham Island Mails' but dated 6 months earlier

Evan Williams put up 10 sheets of very rare and interesting 'Ulm' Air Mail covers featuring 'Faith in Australia' and First Flight covers to and from New Zealand, Australia and Tasmania plus a hitherto unknown cover with hand written inscription 'Airship Cover' registered and posted in Auckland in 1940. Evan and the members had no previous knowledge of an Airship over the Tasman Sea! We were all impressed with the display as Evan has only been 'into' airmails for about a year.

Peter Lay showed 2 covers addressed to himself with the SG877 25 cent stamp featuring a pallet of dairy goods being loaded onto a ship. Peter explained that he was the Master of the ship – the N.Z. Shipping Company's 'Surrey' – and had been there when the photo was taken that appeared on the stamp.

Brian Hunt was next with very neat and well written up pages of the London printings of the 1898 First Pictorial issue. He explained that for reasons that were unclear, Waterlows printed this issue with the wrong number of stamps per sheet. We also saw some good examples of the differing shades of the issue along with the 'Wakatipu' error.

Alan Deal followed with 'Vesting Day' covers and a 'Free Post' cover that none of us had seen before and several sheets of extra large stamps and modern misprints.

John Bater brought along a well presented selection of postally used Fiscal stamps including covers with 6 shilling, 8 shilling and 15 shilling fiscals and 2 covers to the USA with £10 and £20 values. Several licence applications with the proper use of Fiscals completed John's display.

Neil Jones gallantly brought up the rear with 5 Airmail sheets with the 'Tasman Air' overprints including errors and followed up with several sheets of proofs for the Dunedin exhibition issue.

Members agreed that we had enjoyed a varied and interesting series of displays of material that was new to us and looked forward to the next meeting on September 16th at the same venue. After a vote of thanks to Shirley North for providing refreshments, the meeting closed at 15.45.

NOTES OF THE MEETING OF THE NORTHERN GROUP HELD ON FEBRUARY 18TH 2006

There were 9 members present with apologies from 4 more. The theme of the meeting was 'Members Displays' with the members showing as follows:

Paul Wreglesworth: Lightning coils of the 1960 Pictorials 2½d, 3d and 4d values. N.Z. spoof stamps produced by Gerald King. Early use of the Second Sidefaces, the 3d on JY82 and 2½d 5 JAN 91.

Harold Howard: A block of 4 of the 1d Second Sideface with a bulls eye marking and a sheet number on the left hand side. This caused a good deal of discussion as the number is not usually in this position. The block was perforated 12x11½ and the watermark was found to be inverted explaining the unusual sheet number position – a very nice acquisition. Other items were the Best of 2005 miniature sheet, the Lions Series 2005 covers and an early photo book (1890's) of Ashburton.

Aubrey Halpern: New Zealand Antarctic postcards and examples of the Canterbury Times and Weekly Press. Cards of Scott's Memorial, Shackleton's expedition of 1907-09 and Byrd's 1st Expedition. Modern issues: the DIY stamps of Antarctica scenes, the Kiwipex 2006 Miniature sheet.

Richard Simmons: George VI plate and imprint blocks, commemoratives including Peace, Otago, Canterbury, Health Issues 1943-51.

Stuart Potter: Anniversaries of the 1st Tasman Flight of 1928, the 30th Anniversary in 1958 showing blocks of 30 with plate numbers 1 and 2 together with varieties. Also a selection of illustrated covers, an aerogramme celebrating the 50 Anniversary and the Cinderella produced by Stirling & Co for the 60th Anniversary.

John Hepworth: A selection of variations of the Queen Victoria postcards including those produced by Waterlow & Sons and those that included views. A selection of the Taranaki district, including railway stamps, postcards and covers of the area, a cover from HMNZS Taranaki, Tarapex 1969, Tarapex 86 and a postal stationery of the area.

Mike Hanson: A selection of King Edward VII, including proofs, line and comb perforations, two-perf. pairs, used blocks, booklet pairs on cover and booklet panes with stars. Then Dunedin Exhibition stationery and the stamps including the 4d POSTAGF flaw. He finished with varieties of the 1967 decimals and postage dues on cover.

The members congratulated themselves on an excellent meeting and we closed at 16.30

PUBLICATIONS AVAILABLE

Society publications are now available:

SP 1: *Aspects of Collecting New Zealand Stamps*. (Out of Stock)

SP 2: *Index to The Kiwi Volumes 1 to 50*. Printed and CD Version.

SP 3: *The Kiwi Volumes 1 - 50*. Full text on CD

Price: SP 1: £10 inc. P. & P.

SP 2 & SP 3, £30 in UK and £35 overseas airmail inc. P. & P. (Society members will receive a 40% discount)

Payment accepted in NZ\$, US\$ or £St. All orders to:

New Zealand Society of Great Britain
9, Ashley Drive,
Walton-on Thames,
Surrey KT12 1JL

OBITUARY JOHN WOOLFE

Members will be aware that John Woolfe died in January 2006 at the age of 62. No doubt, all those who knew him received the news with surprise and great regret. John's involvement with the Society is a long one as he joined in 1969. In 1997, he took on the duties of Librarian. This was a role suited to his analytical mind and all those who wanted to use the library or research a topic found him helpful and willing to give as much assistance as was required.

In 1999, he additionally took on the more onerous role of Auctioneer. The impression of Auctioneers is that they appear magically on the day of the auction, say their piece, drum up enthusiasm for the lots and then disappear again until next year. As is now becoming apparent, there is much more to it and most of the work takes place before the day in gathering the lots and after the event when the spoils have to be distributed to their new owners. This too was suited to John's meticulous approach. The technical success of the auctions in recent years has been a result of the care that he lavished on it. Perhaps his approach was a reflection of his daytime job as the Science Director of a major Vaccine Producing company.

From a personal point of view, I shall miss his contribution to Committee Meetings: his comments could be waspish but they were always accurate and never malicious. Although I only knew him as a stamp collector and philatelist, I shall miss him.

AD

Gerald Elliott RDP writes:

I was both saddened and shocked when I heard the news that John had died. I feel very diffident in writing this short tribute, as it seems that I knew very little about John, especially anything personal.

Suffice to say that he was a very private person, but those who were lucky enough to entertain him at home know how much humour and philatelic knowledge he possessed, and he loved our cats.

John was a dedicated and diligent keen researcher who did not accept secondary information. Consequently, he spent many hours studying the primary sources of contemporary newspapers at Colindale and original documents at the National Record Office at Kew.

John was a person who willingly shared his knowledge and was always happy to provide copies of his material and to give advice on anything associated with early New Zealand Postal History.

John recently loaned items from his NZ Postal Routes & Rates and Marine Post office collection to Te Papa Museum in Wellington for the highly successful exhibition 'Stamped'. He also provided copies of items from his collection to the team writing the definitive Handbook on the Chalon Heads of New Zealand.

Whilst John was a very private person, it may be that his shyness and reluctance to intrude was what characterized his being. Nevertheless, John will always be recognised for his total commitment to our hobby, both at club level and at exhibitions.

There can be no doubt that he was a great Postal Historian and that his untimely death is a great loss to us all and to the collecting and study of New Zealand Postal History. We shall all miss him.

Ken Lynch writes:

I received the news of John Woolfe's demise with shock and sadness. Philately can ill-afford to lose such relatively young stalwarts.

On a purely selfish note, John had been far and away my primary contact with the Society – mainly in his role as librarian but also as auctioneer and general philatelic enthusiast.

As I am not to any extent a postal history aficionado, the outstanding facet of John that I encountered was his personality. I suppose that we are all ego-trippers to varying extents but I found John to be performance rather than ego driven.

John was fully adult enough that we quickly got onto the same wavelength that mutual criticism should not be pure paeans of praise but rather a mixture of vinegar and saccharine. The result of this mutual regard was shown in my criticism of his exhibit at Northpex in 2002 and his criticism of the last couple of editions of my book *The 'Chalon' Issues of New Zealand*.

For many years, The New Zealand Society of G.B. was casually known in New Zealand as the Noel Turner club. Perhaps had John lived longer, he might have emulated that recognition.

If you:

Need a new challenge

Have decided for any reason that you are not getting the satisfaction from your New Zealand stamp collection that you used to and would like to try a new subject/issue

- *Would like a valuation on your collection carried out by experienced staff from the worlds leading New Zealand dealers*
- *Simply need some good advice about what to do next with your collection*

Then contact us for a confidential chat and – if appropriate – a free valuation and offer.

Remember that our advice is free, draws on a wealth of experience and is given with the confident knowledge of the New Zealand market over the past 60 years as it stands at present.

For a friendly discussion, simply phone Derek Redshaw, 76 Hermitage Road, St Johns, Woking, Surrey ☎01483 833 147 or Warwick Paterson in Auckland, ☎ (toll free) 0500 893 975.

It's as easy as that and what's more, it will cost you nothing.

Campbell Paterson Ltd.

P.O. Box 5555

Auckland 1001

New Zealand

We're as far away as your own phone

INFORMATION RECEIVED:

MEDIA RELEASE

Stamps pay tribute to victims and heroes of NZ's worst natural disaster

3 February 2006

New Zealand Post's latest stamp issue commemorates the 75th anniversary of an event that in just 150 seconds redefined the Hawke's Bay: the 1931 Earthquake. Made up of twenty different 45-cent stamps, the issue tells the story of how a community responded to what is arguably New Zealand's worst natural disaster in living memory.

'Stamps provide the means for New Zealand Post to acknowledge those events that are of significance to our nation,' said New Zealand Post Stamps General Manager Ivor Masters.

'Our intention with this commemorative issue was not only to depict the severity of the quake, but more importantly to pay tribute to the way in which the people of Hawke's Bay and the rest of New Zealand banded together to assist emergency services and eventually to rebuild the cities of Napier and Hastings.'

The first image in the series is of Hastings Street in Napier in 1930, as it would have looked on the morning of the earthquake. This photo contrasts dramatically with the stamps that follow, which depict the devastation wreaked upon the city, both by the quake itself and by the many fires that broke out in its aftermath.

The HMS *Veronica* and its crew feature on two of the stamps. By fortunate coincidence this ship was docked near Napier on the day of the quake, and within 10 minutes the crew had communicated the disaster to the rest of the country and were assisting rescue efforts.

The final images in the series show a reconstruction of Napier and the new 'Art Deco City' as it was in 1933. A stamp featuring a photo of the children's parade in the 1933 New Napier Carnival conveys the optimism and hope that slowly grew in the region as its cities were rebuilt.

Along the base of each of the stamps is the actual seismographic reading of the quake, which at 7.8 on the Richter scale and only 16km deep was felt by most of New Zealand, and recorded throughout the world.

The stamps and first day cover were designed by Commarts in Wellington and printed by Southern Colour Print, Dunedin. They will be available from the usual outlets from 3 February 2006.

Stamps showcase New Zealand's natural beauty

1 March 2006

New Zealand Post's latest stamp issue takes a journey through some of New Zealand's most popular tourist spots, stretching from the peaceful beauty of Stewart Island to the rugged wilderness of the Coromandel.

Stamps General Manager Ivor Masters said that the stamps provided an opportunity for New Zealand Post to showcase the unique natural features and spectacular landscapes that made Aotearoa a destination of choice for both local and international visitors.

'All Kiwis are understandably proud of our natural environment, which offers a rich and diverse holiday experience. New Zealand Post is delighted to give a small taste of this experience by capturing six magnificent New Zealand scenes and placing them on a particularly useful souvenir – a stamp!'

Each of the stamps has a value of \$1.50 and they are therefore ideal for visitors to use on postcards to friends and family at home.

The first stamp in the series features the now world-famous Lake Wanaka, which with its dramatic scenery and varied climate is a popular tourist destination in every season. This is followed by an image of Mt Taranaki, a breathtaking peak that is botanically unique and attracts large numbers of climbers, trampers and skiers.

The remote Halfmoon Bay in Stewart Island is pictured on the third stamp. Kayakers flock to the sheltered waterways and peaceful beaches of this island in the deep south, and the estimated 20,000 kiwi population attracts many who wish to catch a glimpse of this iconic bird.

Also included in the series are the Franz Joseph Glacier on the West Coast – a piece of world heritage that has an ecosystem not found anywhere else in the world – and the Huka Falls, where every second 220,000 litres of water cascades over the falls and into a narrow gully below.

The final stamp in the series shows Cathedral Cove at Hahei Beach in the Coromandel. Officially named Te Whanga a Hei, the cove is an official marine reserve and home to protected reefs and an abundance of marine life.

The stamps and first day cover were designed by CommArts Design in Wellington and printed by Southern Colour Print. Products are available from the usual outlets from 1 March 2006.

CHANGES TO THE POSTMARKING OF MAIL BY NEW ZEALAND POST

New Zealand Post is embarking on a significant period of change in our mail process business to ensure the business is sustainable and meeting customers needs in the future. **Over the next few years we plan to fundamentally change how New Zealand Post processes the mail.** This includes investment in new machinery in our major mail centre sites in Wellington, Christchurch, Dunedin, Palmerston North, Hamilton and Auckland and changing how we operate.

As a result of the centralisation of mail processing, from March this year we will be simplifying the way we cancel mail by gradually introducing a national 'New Zealand Post' postmark for all mail processed across the country. The new standard national postmark will include date of cancellation to demonstrate our commitment to meeting service standards, but will no longer include the place of cancellation.

As you know, postmarks are used to ensure postage isn't used more than once and to identify, as required by law, which postal operator has carried the mail. In the past, New Zealand Post has postmarked mail with both the date and location of cancellation. However, as we centralise the processing of mail, the location of cancellation becomes a lot less relevant – and even confusing – to customers.

New Zealand Post values the commitment of collectors and appreciates the importance and value placed on postmarks. Please be assured that any current arrangements you have with your local PostShop or Post Centre to hand cancel postage will remain in place. In addition, we will continue to provide current cancellation services offered through our Wanganui Stamp Centre. We will also be continuing to offer pictorial postmarks in regional sites where they are currently provided.

Q&As: What will the new national postmark cancellation look like?

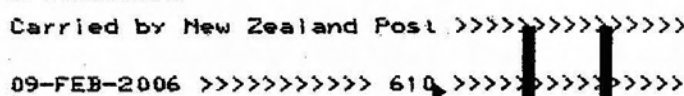
Example inkjet cancellation

IMP machines:



Cancellation code (for internal use only)

CFC machines:



Cancellation code

Example postmark plus slogan plate cancellation Pitney Bowes and Klussendorf machines and Reiner Roller stamps

Date Stamp:

Cancellation code

Date of cancellation



Standard Post slogan plate:



FastPost and Boxlink slogan plate:



So there will be no record of where mail has been sent from?

The new standardised postmark will include a 3-digit cancellation code, for New Zealand reference only, to enable us to identify and track, as required for service performance or security

reasons, where mail has been processed. The cancellation code relates to the geographical location and sort zone. A list of current cancellation codes is available at www.nzpost.co.nz/stamps.

Will New Zealand Post still include slogans on its inkjet cancellations?

Yes, the new machines will have the ability to apply slogans. This will be centrally managed by New Zealand Post.

Isn't New Zealand Post legally obliged to provide information about where mail has been posted?

Under the Postal Services Act, postal operators are required by law to identify mail they carry. Any additional information – such as place or time – is provided at the carriers discretion.

While the place of cancellation will no longer be provided to avoid confusion, New Zealand Post will continue to include the date mail is cancelled to demonstrate its commitment to meeting service standards.

I currently have an arrangement with my local PostShop to hand cancel stamps. Will this change?

No. Any current arrangements you have with your local PostShop or Post Centre to hand cancel postage will remain in place. In addition, we will continue to provide the current cancellation services offered through our Wanganui Stamp Centre.

I collect pictorial postmarks. Will these be phased out too?

No, we intend to continue to offer pictorial postmarks in regional sites where they are currently provided.

Will this affect service standards?

New Zealand Post's service standards will not be compromised by the changes. In fact the wider changes are being introduced to ensure we continue to meet customers' needs in future.

NEW ZEALAND OFFERS FROM STOCK

1875 (No Wmk) 6d pale brown on thick paper with clear to large margins cancelled '9' of New Plymouth. SG 14. £175	1893 1/- red-brown (Perf 10) in strip of three with ads in black. Very fine used. Rare piece. SG 226d. CP DA10e(2). £300
1878 1d FSF corner Plate '1' block of four with Sheet No '74387'. Unmounted mint. Superb. SG 180. CP C1f(4). £850	1897 1/- pale red-brown (Perf 11) in block of four. Very fine mint. Rare multiple. SG 245. CP D10k(1). £400
1878 4d FSF corner Plate '5' block of four with Sheet No '83578'. Unmounted mint. Superb. SG 182. CP C4d(4). £1300	1901 1d Universal Die Proof in black on wove with part watermark and Die No '3102'. Very rare. Ex Midas. £450
1890 2½d dull blue on Life Insurance paper in block of four. Very fine mint. SG 210. CP D4a(2). £150	1913 Exhibition set used on two pieces tied by EXHIBITION/AUCKLAND c.d.s. '28 MR 14'. SG 412/5. £475
1890 (Die 3) 1d rose Perf 12½ x 10. Very fine mint. Rare stamp. SG 216ba. CP D2k(Y). £160	1915 2d violet corner Plate '16' block of four. Unmounted mint. Scarce. SG 417. CP K2a(4). £200
1893 2½d blue (Perf 10) strip of four with ads in brown-purple. Very fine mint. Scarce multiple. SG 220e. CP DA4e(1). £250	1924 9d pale sage-green Plate '25' block of four. Unmounted mint. SG 429. CP K11a(4). £300
1893 8d blue (Perf 10) strip of four with ads in brown-purple. Very fine mint. Rare multiple. SG 225. CP DA9c(1). £300	1903 6d Express (Perf 11) deep red and violet block of four. Very fine mint. SG E1. CP U1a. £120

The above is a selection from my extensive British Commonwealth stock. All items available on approval (subject unsold). Major credit cards accepted. Illustrated lists on request (please advise collecting interests). Wants lists invited.



MARK HARVEY

P O BOX 50

HASLEMERE

SURREY GU27 1WX

Tel/Fax (01428) 642702

e-mail: mark@surreystamps.com



COMING EVENTS

KIWIPEX

November 2 – 5, 2006

The latest newsletter, dated March 2006, has now been issued and it is clear that the Exhibition organisation is now moving into full gear. The fund raising has been progressing well with more than \$5,000 raised by the last newsletter to help fund the hire of the three main halls of the Christchurch Convention Centre as well as the smaller rooms to provide all the support functions for this major exhibition.

The further details are becoming clear with 26 dealers committed to attending including 4 from the United Kingdom and 1 from America. New Zealand Post will also be present with a different daily postmark and a special New Zealand Post Kiwipex souvenir stamp issue. Southern Colour Print will attend as well to promote their expertise.

The social programme is also published including a trip to Quail Island, the island which was in use as a quarantine station for many years as well as providing the base for various Antarctic Expeditions at the start of the last century. The newsletter contains details and booking forms for the Chairmans Reception on the first Evening and the Palmares on Saturday November 4th.

Full entry details and forms are included on the back of the Newsletter and the closing date for entries is May 31st, 2006. These forms are also available on the website

For further information contact: Kiwipex 2006, PO Box 18 914, Christchurch, New Zealand. Website <http://www.newzeal.com.kiwipex.htm>. e-mail: kiwipex@paradise.net.nz.

NEW ZEALAND NATIONAL SPECIALISED STAMP SHOW

NORTHLAND 2007

30TH March - 1st April 2007

The prospectus for the above exhibition has now been published. The event is being held to celebrate the 50th Anniversary of the Whangarei Philatelic Society Inc. It will be governed by the 'Approved Regulations for New Zealand Exhibitions'. Major sponsors are Whangarei District Council, Zeapex Trust and Northplan Investment Specialists.

Entries are invited in Traditional Philately classes for New Zealand and all other countries, the Open/Social Class and the National One Frame class. All entry forms must be received by 6th December, 2006.

If you fancy a stamp exhibition held in the north of the country and a trip to the Bay of Islands, send for the prospectus and entry form from: Northland 2007, MM Comrie, Secretary, 50, Suester Road, R.D. 9, Poroti, Whangarei, New Zealand.

THE SALE OF THE SIR GAWAINE BAILLIE COLLECTION OF NEW ZEALAND STAMPS

The collection was sold in four sessions on February 15, 16 and 17, 2006. In all, there were a total of 1171 lots and the total sale realisation (including buyers premium) was £1,054,998 with about 81% of lots sold.

Richard Ashton, Sotheby's Philatelic Consultant, said 'The sale was an incredible success and way beyond what we had hoped for or expected. Of all the Baillie sales this was the one which could have been difficult. It followed a similar pattern to what we are all experiencing in auctions around the world and that is that as a general rule, stamps are proving more popular than proofs'.

A significant feature of the collection was the condition of the stamps. They were all mint and Sir Gawaine would not include any examples in poor condition or with rust. For example, the copies of SG 1, 2 and 3 are said to be the finest copies in existence.

From the session that I attended, this is certainly the case: the KGV stamps were going at prices well over catalogue value and the essays and proofs, with some exceptions, were at prices similar to their realisations in the 'Midas' sale in 1989.

I have selected a variety of realisations which should be of interest to readers. The prices shown include the buyers premium of 15%+VAT. Further information, realisations etc. is available on Sotheby's website www.sothebys.com.

Lot No.	Description	Realisation (Top of estimate range)
12	1d Chalon (SG1)	£69,000 (£6,000)
41	2d Chalon (SG2)	£36,800 (£12,000)
94	3d Chalon (SG3)	£48,000 (£25,000)
82	SG139: Block of 34 + 2 extra – 4d yellow	£14,950 (£6,000)
126	SG182: 4d First Side Face – 12x11½ - block of 6	£2,300 (£600)
225	Large format painted essays for First Pictorials by anonymous artist – 10 designs	£1,035 (£1,500)
289	SG264a: 6d First Pictorial. Perf. 11 block 4 with ½ re-entry	£483 (£200)
305	First Pictorials 6d Kiwi reduced format working Die Proof with pencil markings showing required new size	£920 (£600)
337	SG329: 5/- First Pictorial Perf. 14. Block 4 largely original gum.	£1,610 (£600)
341	Remainder collection of First Pictorials	£36,650 (£15,000)
342	Mt. Cook Die Proof: black on white with reversed Die numbers	£576 (£400)
530	KEVII 6d Plate proof: block of 4 with Plate Number '1' dot in margin	£240 (£200)
535	SG390: KEVII 4d Perf. 14x14½. Top marginal block of 4 with sheet number	£299 (£150)
573	KGV 2½d Die Proof	£299 (£400)
600	KGV 4d Plate 44 – 14x 14¼ - Plate block of 4	£1,265 (£500)
628	KGV 1/- vertical block of 6 with se-tenant perforations	£518 (£200)
713	Second Pictorials: 2d Coarse paper Perf. 14x13½. Horizontal strip 4 with offset on 3 stamps	£264 (£150)
714	Second Pictorials: 3d Perf. 14x13½ lower marginal strip of 4 with complete Plate 2 mark	£1,140 (£350)
719	Second Pictorials: 5d cobalt blue: double print, one albino	£420 (£400)
764	1960 2d with black omitted	£172 (£150)
772	1960 4d Chalky paper Plate 2333 Block of eight	£4,370 (£4,500)
790	1967 8c with red cross on flag omitted	£414 (£200)
822	1978 Shell stamps: \$1 block of 9 with central block of 3 imperforate on 3 sides	£690 (£700)
824	1979 Provisional surcharge: 14c on 10c block of 4 with orange omitted	£402 (£400)
847	Christchurch Exhibition 6d Die Proof from the approved Relief Die	£920 (£400)
859	Christchurch Exhibition 1d Claret single	£4,370 (£4,000)

860	Christchurch Exhibition 1d Claret top left corner single	£6,210 (£7,000)
861	Christchurch Exhibition 1d Claret interpanneau pair	£12,650 (£15,00)
862	Christchurch Exhibition 1d Claret top marginal interpanneau pair	£15,525 (£20,000)
870	1920 Victory Plate Proof block of 16	£230 (£300)
946	1959 Red Cross 3d with red (cross) omitted	£828 (£700)
958	1968 Armed Services Tribute 28c with yellow omitted	£713 (£400)
1004	1d Smiling Boy Die Proof with 1930 date	£920 (£500)
1033	1996 Health: Teddy Bear: horizontal pair from sheet	£920 (£600)
1034	1996 Health: Teddy Bear: single self adhesive	£690 (£400)
1049	1933 Air Mail issue: Stamp Printing Office Die Proofs of each value	£1,035 (£1,500)
1171	1911 – 1913 Scott Expedition ½d and 1d cancelled on souvenir Expedition certificate tied by Expedition date stamp (the only used item in the sale)	£456 (£200)

AFD

NEW ZEALAND 1901 - 2000

New comprehensive 2006 general list for mint and used. Including:

- Officials
- Postage Dues
- Life Insurance

Buying better individual items and good collections of
Australia, Australian States, Canada and New Zealand

Specialised list also available.
Includes: High Values, States, Canada and New Zealand
(Chalons, Varieties, Missing Colours, Fiscals etc.)

Australia 1913 – 2000 general list also available

Ian Perry
29 Chetwynd Grove,
Newport, Shropshire TF10 7JW
Tel. 01952 825941
e-mail: ianperry@beeb.net



SPECIAL PUBLICATIONS – A REMINDER

Members will know that the Society launched its Special Publications series in 2002 with a volume entitled Aspects of Collecting New Zealand Stamps (now sold out). Volume number 4 on the First Pictorial issue is now in progress and the Society is anxious to find more manuscripts for inclusion in the series. Anyone wishing to put a proposal before the Publications sub-committee should contact Derek Diamond (9, Ashley Drive, Walton-on Thames, Surrey, KT12 1JL: e-mail Derek@diamondwot.fsnet.co.uk). All aspects of New Zealand philately are welcome including links between New Zealand and other nations. Authors do not have to be members of the Society and the Society aims only to recoup any costs so as to maintain sufficient funds for launching further publications.

RESPONSES TO PREVIOUS ARTICLES:

A CORRECTION TO THE MEETING REPORT OF THE MEETING HELD IN JANUARY

PAUL WREGLESWORTH

In the meeting report in the last issue of *The Kiwi* (1), there was a small error in the text on page 33, paragraph 6. The reporter noted that the display included an 8d letter to Denmark the fee comprising 6d Registration Fee and 2d Postage. This was not correct and the statement goes to show how complex and confusing the rates can be,

I did show two unregistered letters with the rate of 8d with 6d and 2d stamps applied. One was to England and one to Germany. This was the correct rate for a letter to the UK via the Brindisi route. It was also the rate to Germany via London but via San Francisco.

I also showed an 8d rate (with a single 8d stamp) to Germany via San Francisco!

The cover that I think the reporter noted was a **Registered** letter from Norsewood (23 MR 88) to Denmark (via San Francisco and London). The rate was 8d Postage and 8d Registration Fee and is pre-paid with a pair of 8d stamps. Just to confuse matters further, had this letter gone via Brindisi, the rate would have been 9d Postage and a further 6d Registration Fee.

References:

1. Anon. 'Notes of the Meeting of the Society held on January 28th, 2006' *The Kiwi* (2006). Vol. 55 No. 2. Pp. 31-34

THE 'PAID ALL' MARKING

Paul Wreglesworth writes:

In the report of the January meeting of the Society (1), some questions were raised about the 'Paid All' marking applied to mail to America.

I have subsequently reviewed the articles which appeared in previous volumes of *The Kiwi*. In particular, it is worth referring to the article written by J Edgar Williams (2) in 1991. In this article, he refers to a number of markings (there were follow up articles in 1993 from John Woolfe and Ken McNaught). Importantly, he makes the following reference to the Postal Convention between the United States of America and New Zealand which came into effect on 1st December 1870. In Article IX, it states:

"Every fully prepaid letter despatched from one country to the other shall be plainly stamped with the words "PAID ALL" in red ink, on the right upper corner of the address, in addition to the date stamp of the office at which it was posted; and on insufficiently paid letters the amount of deficient postage shall be inscribed in black ink."

He adds in his article: "The purpose of the marking was to inform the postal officials of the country to which the letter was addressed that the letter was fully prepaid and no additional postage was to be collected. The postal authorities could not be expected to know the correct postal rates of all other countries, involving different currencies."

Similar agreements were in place with Australia and Japan, each country having very different cancellations. The debate with the NZ – US routes has centred around where and when these markings were applied. It is generally agreed that these were not applied in the US (although mail was often stamped again on arrival in San Francisco or New York). Arguments have been put forward for the different markings having been applied either on-board the mail ships running those routes or at the major post offices at the ports from which the mail ships departed.

There is, I think, more work to do as I have certainly acquired more examples since the debate of the 1990s.

Bob Watson adds:

Such markings were applied in the country of origin so the example on Paul's cover was a New Zealand marking. There are a variety of such markings from both countries. In my experience the mark was occasionally not applied but the clause was usually followed. As the treaty was superseded by New Zealand's entry into the Universal Postal Union in October 1891, such markings should be found on covers with Full Face Queen's, and First and Second Sideface stamps but I have yet to see an example of the former in the period 1870-1874 but presumably they do exist (Does anyone have one they wish to sell?)

References:

1. Anon. 'Notes of the Meeting of the Society held on January 28th, 2006' *The Kiwi* (2006). Vol. 55 No. 2. Pp. 31-34
2. Williams J. Edgar 'The Straight Line 'Paid All' Markings'. *The Kiwi* (1991). Vol. 40. No. 4. PP. 66-70

THE CHRISTCHURCH EXHIBITION CANCELLATION

ALAN BAKER

I was most interested to read John Painter's letter about Christchurch Exhibition cancellations and his copies dated 31 DE 06. 2 24 P.M. with the 24 in a smaller font (1). It is certainly the first that I have heard of such a time.

My own comments are unfortunately negative. I have looked at 20 Exhibition cancellations in my collection and the majority have either a dash for the minutes or 30 or 15 in the larger font. Two copies have the minutes in a smaller font; 7 DE. 06. 3.20 PM and 15.AP. 9.30. AM. I also have two copies of the Christchurch NZ cancel with Exhibition removed which also have minutes in the smaller font: 1.JA.07. 11.30 PM and 3. JA.07. 5.30 PM. I have no cancels dated 31 December.

I am not sure whether this is of any help but a time of 6.24 seems very unlikely. On the other hand, why, as John says, should anyone take the trouble to forge such a time?

Reference:

1. Painter J. 'The Christchurch Exhibition Cancellation' *The Kiwi* (2006). Vol. 55. No. 2. P. 45.

ORIGINAL CONTRIBUTION:

THE CHINESE AND THE GOLDFIELDS

LEWIS GILES

In the 19th century, New Zealand's settlement policy was to create a 'fairer Britain of the South Seas'. Non-white immigrants, including Chinese, were regarded as undesirable in this nation building enterprise. The first major influx came with the advent of the goldfields.

The history of the Chinese gold miner has been well documented by events in the Californian and Australian goldfields where in both areas, intolerance and even persecution prevailed in the wake of stories of their 'Oriental Lifestyle'. Hostility was expressed even before they arrived in New Zealand when a rumour of their immigration to the Nelson Goldfield spread in the 1850's and the Nelson Examiner ran an article in which it stated that '*the Mongolian Filth is about to arrive*'. In 1866, the first Chinese workers arrived in Lawrence and Waitahuna. Reassuringly, the 'Tuapeka Recorder' told its readers that '*nothing in their general demeanour that could be called downright repulsive*'!

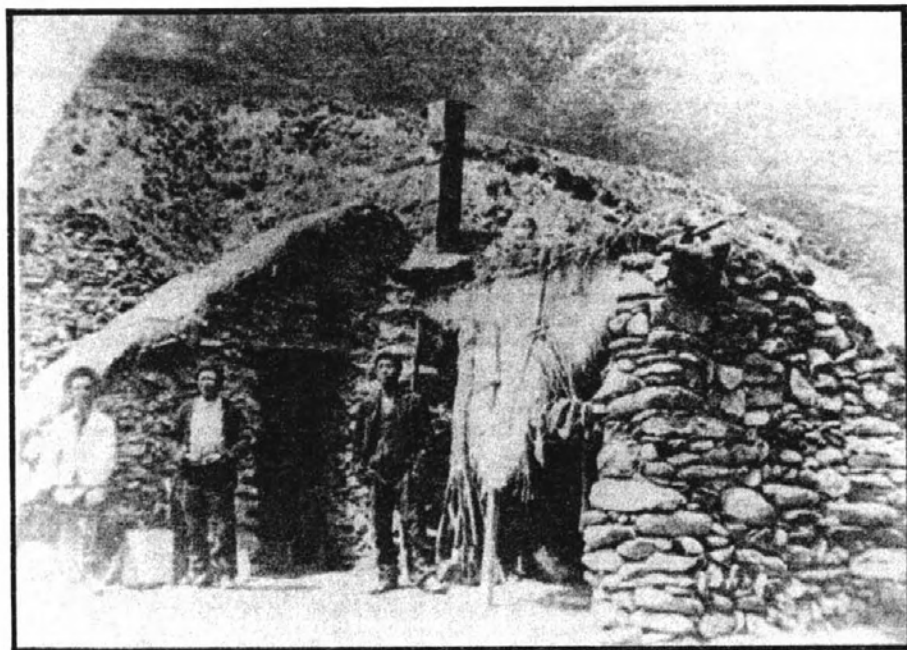


Figure 1. Chinese gold miners in Otago in about 1900

In the first instance, the Chinese workers were invited to come to New Zealand by the Otago Provincial Government who were concerned because the discovery of gold on the West Coast of the South Island had resulted in a mass migration of workers to that area leaving a dearth of men to work the Otago Goldfields. The Chinese newcomers occupied land which had been vacated by those who had joined in the West Coast goldrushes as it was the practise at the time that the new arrivals would not be issued licences for 'New Ground'.

The first Chinese to reach the West Coast sailed from Sydney to Hokitika aboard the schooner '*Atlantic*' and arrived in 1867. They found the same sort of agitation against them as was found by those in Otago. There were 14 immigrants on the vessel and such was the animosity against them that there was a near riot on Gibson Quay. This did not stop them disembarking. By 1869, over 2,000 Chinese men had arrived in the land that they called the 'New Gold Mountain'. This first group was followed in 1881 by a further group of 700 who disembarked at Hokitika having sailed there directly from Canton on the '*Kenmore Castle*'.

By the late 1860's, there were occasions when the Chinese population outnumbered the European at several Otago mining centres: at Bannockburn, there was near parity and at Neavis, there were 250 Chinese to 100 Europeans. They lived in their own communities and were not permitted to live in towns as their primitive way of life aroused European distaste. They proved to be very diligent, hard working and law abiding. The men came alone, leaving their wives at home. This lead to an extremely unbalanced sex ratio in the community: for example, in 1881, there were

nine women to 4,995 men. The ultimate fate of the Chinese miners was not happy: few struck it rich, most existed in poverty and without women in a strange land far from home. Figure 1 shows the sort of accommodation in which they existed illustrating the dwelling house of two Chinese miners in about 1900.



Figure 2: A letter addressed to Sew Hoy in 1882

One of the most successful of the immigrants was Choie Sew Hoy, known in English as Charles Sew Hoy, the addressee of the letter illustrated in Figure 2 (1).

The envelope shown is addressed to Sew Hoy in Stafford Street, Dunedin and was posted at Alexandra South on 8 AP 82. The 2d SSF stamp is cancelled with the 024 obliterator. On the reverse is an RTPO (D.S.) cancellation dated 11 Ap 82.

On the right of the envelope from the top to the bottom there is a date of Summer 1882. Reading from the middle to the far left, it says: 'for the attention of XU Zhankai C/o Mr Jiang Songshen. The last four characters on the far left are illegible.

Sew Hoy was born into a farming family in China in about 1836-38. He initially went to California and Victoria to work the goldfields before arriving in Otago in 1868. A year later, he opened a store in Dunedin and began importing Chinese goods for onward sale to miners. unusually he committed his future to the country becoming a naturalised citizen in 1873. He became prominent among the Chinese mining community but also integrated into European society becoming the best known Chinese man in Dunedin by the early 1880s.

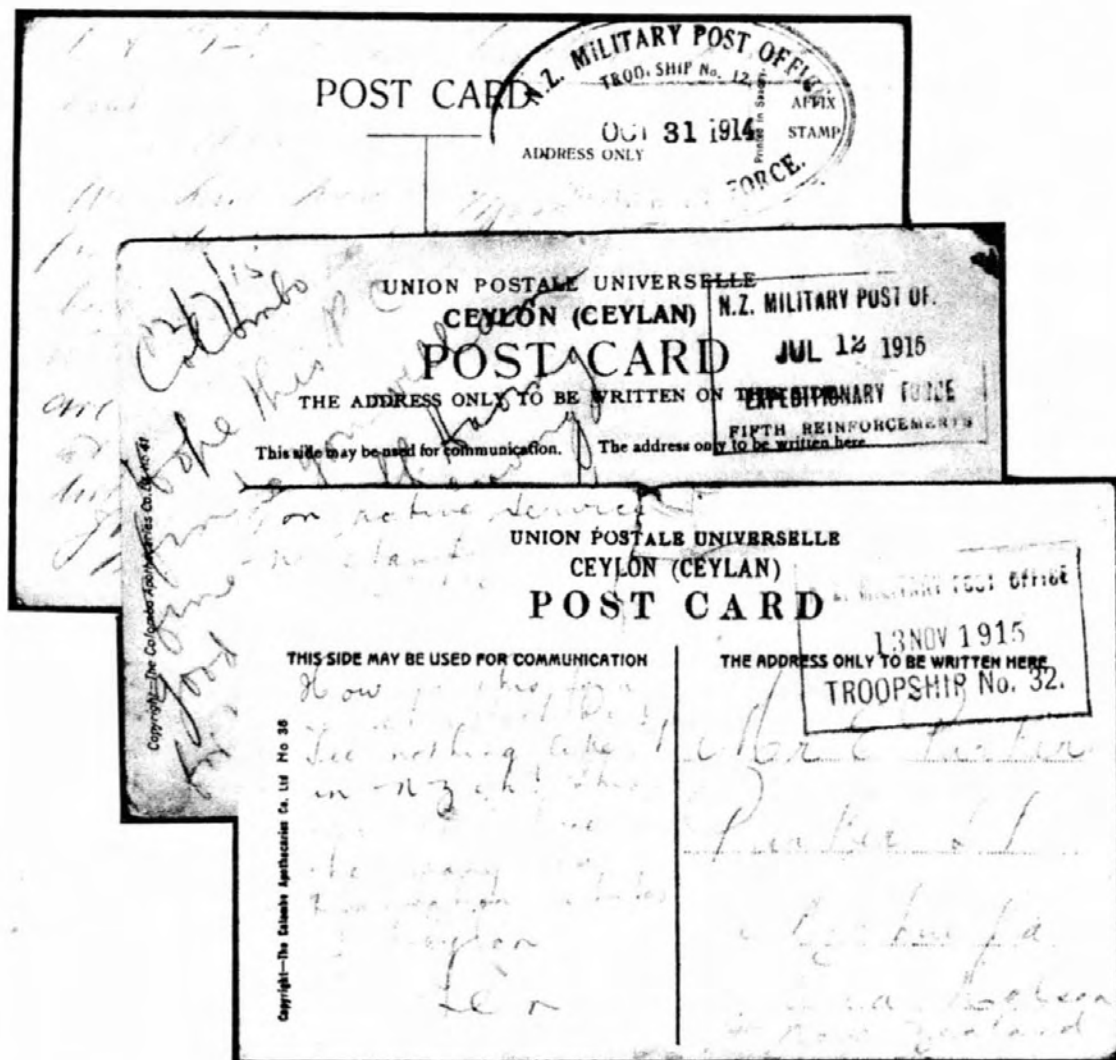
Subsequently, he became involved in a number of commercial enterprises and was one of the pioneers of successful dredging for gold. At one stage, he owned 4 gold dredges on the Shotover River and a sluicing and Hydraulic elevation Plant at Nokomai. The Sew Hoy gold dredge became the direct prototype of the New Zealand gold dredge which was the leading dredge design in the world.

Sew Hoy died in July 22, 1901 at Dunedin where he was buried. His body was subsequently exhumed to allow it to be buried in China according to his wishes. Unfortunately, the ship carrying his remains, the *Ventor*, sank off Hokianga and his body, with 498 others, was lost.

Reference:

1. Ng, James 'Sew Hoy, Charles 1836-1838? – 1901' *Dictionary of New Zealand Biography*. Updated 7 July 2005. Pub. Ministry for Culture and Heritage, Wellington, New Zealand.

NZ @ CAVENDISH



Next Sale: 20th - 21st April

Can we help YOU to build – or sell YOUR Collection?

Contact James Grimwood-Taylor or Ken Baker.



CAVENDISH HOUSE,
153-157, LONDON ROAD,
DERBY DE1 2SY, ENGLAND
Tel: 01332 250970 (4 lines; 24hrs.)
Fax: 01332 294440 :Fax

E-mail: stamps@cavendishphilauc.demon.co.uk
www.Cavendish-Auctions.com