



# *THE KIWI*



THE JOURNAL OF THE NEW ZEALAND SOCIETY OF GREAT BRITAIN

ISSN 0964 7821

VOLUME 48, NUMBER 1, JANUARY 1999

WHOLE NUMBER 272

THE NEXT MEETING WILL BE HELD AT THE LONDON CENTRAL CLUB,  
16 - 22, GREAT RUSSELL STREET, LONDON WC1B  
ON JANUARY NOVEMBER 30TH, 1999 STARTING AT 2 P.M.

THE SUBJECT IS: **WORLD WAR II**

A DISPLAY WILL BE GIVEN BY ERNIE LEPPARD

## TABLE OF CONTENTS

Editors Note	2
Membership	2
Next Meeting of the Northern Regional Group	2
Next Meeting of the Scottish Group	3
Minutes of the 47TH Annual General Meeting	3
Notes of North of England Meeting: Nov. 14TH, 1998	6
Notes of Scottish Group Meeting: Oct. 17TH	6
Annual Competition	6
Awards to Members	8
Palmex '99	8
A Belgian Collector	8
Committee Meeting	8
Change of Auction Date	8
Display be a Member	8
British Library Philatelic Collections Re-open	8
"Australia '99"	8
"Trains 1999"	9
"Whakapex '99"	9
News Release: Underwater World, Famous Town Icons,	
Urban Landscapes vs. Early Settlement	10
Special Datestamps	12
An Update on Commercial Postal Operators	13
Further Higgins Correspondence	14
A Comment on "Pourere - Pourerere 1863 - 1981"	15
Permit Mail - A Comment	16
An Explanation of the "Primary P.M. Postmark	17
A Plea to Those writing on Mail Ships or Mail Routes	17
Lay Marks on the 1 <sup>st</sup> Lake Taupo	17
Health Stamp Booklets 1998	19
Too Late for Airmail	21
Found Open and Officially Sealed	22
American V-Mail	23

The Society is affiliated to The Association of British Philatelic Societies, The New Zealand Philatelic Federation and the Midland Federation

Annual Subscription £12.00

**OFFICERS OF THE NEW ZEALAND SOCIETY OF GREAT BRITAIN**

**Honorary General Secretary:**

Keith C. Collins 13, Briton Crescent,  
Sanderstead, Surrey, CR2 0JN,  
Tel. 0181 - 657 - 4566

**Honorary Packet Secretary:**

B. T. Atkinson, 77, Wood Lane,  
Osterley, Middlesex, TW7 5EG  
Tel. 0181 - 560 - 6119

**Honorary Treasurer:**

E.W. Leppard, 68, Chestnut Grove,  
Balham, London, SW12 8JJ  
Tel. 0181 - 673 - 4710

**Honorary Editor:**

Andrew Dove, 12, Stella Avenue,  
Tollerton, Notts NG12 4EX  
Tel. 0115 - 937 - 3762

**EDITORS NOTE**

DR. A. F. DOVE

From replies received about the coverage of the changes to the postal service in New Zealand a clear theme emerged. The major elements should be recorded but details of operators issues etc. should not. This is the policy that I will adopt: if readers feel that I deviate, please let me know.

An interesting issue raised is that this change gives stamp dealers an opportunity to design and issue stamps if they were involved with a company registered as a Postal Operator.

Coincidentally, I have recently received "flyers" from two of the new operators. In the unlikely event that I would take advantage of all the offers available, it would have cost me in excess of \$650. Thank you for the kind offer but I think not!

**SOCIETY NEWS:**

**MEMBERSHIP**

**NEW MEMBERS:**

We welcome:

Ronald A. Backholler, "Alrosa", 2, High Street, Ryton-on-Dunsmore, Coventry CV8 3EY

D.S. Bennet, Eildon View, Gordon, Berwickshire TD3 6JT

Andrew Brockett, 98, Popes Lane, Woonona, N.S.W. 2517, Australia

Michael Harvey, 30A, Derwent Road, Palmers Green, London N13 4PU

Alan Lewin, 1, Linstead Court, Station Road, Sidmouth, Devon EX10 8HJ

Bernard W. H. Phillips, 43, Chelmsford Ave., Grimsby, N.E.Lincs. DN34 4SA

G.R.B. Summers, SNCO Mess, RAFO Lansab, P.O.Box 720, PC 111, Muscat, Sultanate of Oman  
(U.K.Address: 56, Emislaw Drive, Arbroath, Angus DD11 2HL, Scotland)

**CHANGES OF ADDRESS:**

Gwen and Margaret Frankcom, 2 Birch Close, Arundel, W. Sussex BN18 9HN (prev. Arundel)

Dr. R.S. Milner, Whare Matai, Treyarnon Bay, Padstow, Cornwall PL28 8JR (prev. Wimbledon)

R.H. Simmons, Pound Cottage, Woods Corner, Dallington, Heathfield, East Sussex TN21 9LB  
(prev. East Grinstead).

Hugh Wynn, Editor, SAS/Oceania Informer, 7442 Spring Village Drive, PV 107, Springfield, VA  
22150, U.S.A. (prev. Merrifield, USA).

**NEXT MEETING OF THE NORTHERN GROUP**

The next meeting of the Northern Group will be held at Orrell on Saturday February 13th, 1999  
starting at 13.30.

Alan Green will give a display entitled "Waterlow and New Zealand". Alan is the Honorary Secretary of the Waterlow Study Circle and will give an excellent display. Please come.

For further details, contact Jack Lindley: Tel. 0161 7051074.

-----  
NEXT MEETING OF THE SCOTTISH GROUP

The next meeting of the Scottish Group will be at the Association of Scottish Philatelic Societies Congress on March 20th, 1999. For further details, contact John Studholme; Tel. 01875 852171

-----  
KIWI DAY: SATURDAY 28TH, 1998-12-04

The 47th Annual General Meeting commenced at 11.00 with Alan Baker, our Chairman, presiding. Sixteen members were present with one new member, Ronald Cole-Mackintosh, attending for the first time.

MINUTES OF THE 47TH ANNUAL GENERAL MEETING OF THE NEW ZEALAND  
SOCIETY OF GREAT BRITAIN

1. The Minutes of the 46th had been previously circulated in the January, 1998 issue of *The Kiwi* and were accepted as a true record.
2. John Smith, our President, presented his review of the Society for the past year:

"Mr. Chairman and fellow members; it will probably be as much a relief to you, if not more so, as to me that this is the last time that you will have to sit as patiently as you can listening to me waffling on. At least, if the rumours I have picked up are correct, the Society will soon have a proper philatelist as its President. As a mere stamp collector, I always found it a little daunting to follow such eminent predecessors as Harry Bartrop and Phil Evans - just to mention two.

So far as meetings over the past twelve months are concerned, I am afraid that I can speak with less personal knowledge than last year as I managed to miss two of them. The meetings that I did attend were well up to standard and, as always, I was pleased to see such wonderful material and felt very envious. Perhaps, I might, again, be allowed to plead for higher attendances at meetings and, possibly, to look into the possibility of a weekend convention. If only people realised what they were missing, the rooms would be full to overflowing.

It is most pleasing that we have a good number of new members this year and I am delighted that the Society seems to be going from strength to strength.

This, of course, comes about not by accident, but by the hard work put in by your officers and Committee. So, for the last time, I am delighted to express my thanks, I trust on behalf of all our members, to all those who by their work and efforts have contributed to the success of the Society this year. If I may pick out one name then it must be Andrew Dove. As I said at the last A.G.M. he had a daunting task taking over as Editor from Allan Berry and I am delighted that *The Kiwi* just seems to get better and better. Very many thanks.

It goes without saying that it has been a great Honour to be President of this Society for so many years. I trust that my successor will enjoy it as much as I have and that the Society itself will continue to flourish".

John presented the Society with a bell to allow the Chairman to keep order in Meetings (hopefully, not the Lutine bell); a gavel will follow in due course He said that he had recently visited Alan Gardiner, our past Chairman, and found that he was not well.

John was unanimously elected as a Vice President of the Society.

3. Ernie Leppard, the Honorary Treasurer, circulated copies of the Annual Accounts and the Treasurer's report for 1997/8. Although there was a small profit for the year, this was due to the transfer of £1,000 from the Packet Account and the interest from deposit accounts. The Society

has adequate reserves and he, therefore, recommended that **the subscription remain at £12.00 for the coming year.**

He then spoke about Stamp 2000: there is concern about the cost of frames to display and meeting rooms. There was much discussion and the meeting requested that the committee of the Society keep the situation under review and report back as necessary.

The 50th Anniversary of the Society is approaching and the possibility of producing a celebratory booklet was discussed. The matter will be pursued at the next Committee meeting.

On the Membership front, it has been a good year with the gain of 50 new members and the loss of only 7 due to death, resignation or lapsed membership. Paul Wreglesworth's good work was acknowledged.

Acceptance of the accounts was proposed by Keith Collins and seconded by Lew Giles and passed unanimously.

4. Bernard Atkinson, Honorary Packet Secretary, circulated his Accounts and report. There have been changes in the method of circulating the Packet. This means that Registered Post is no longer used following complaints about cost. The circulating packet has a value of about £1,500 and is posted in the normal mail with the sender obtaining a certificate of posting. The sender must also telephone the recipient to ensure that they are available to receive the packet. The new cost of insurance is £1,375.00 and, to cover the cost, a levy of £1.00 per packet is made. If no purchase is made from the packet, the £1.00 may be paid in stamps. He said that he would keep the circulation under review and hoped that more members would join the circuit.

Acceptance of the Accounts and report was proposed by Lew Giles and seconded by Paul Wreglesworth and passed unanimously.

5. Alan Baker asked Andrew Dove to report on *The Kiwi*. Andrew thanked all those who had corresponded with him and provided articles and other material during the last year. He had received no adverse comments about the new format.

6. Paul Wreglesworth reported on his activities as Publicity Officer. Notable events were the inclusion of publicity material with the annual update of Campbell Patersons catalogue, the inauguration of the Society Website (640 visits so far), the publication of a major article in Gibbons Stamp Monthly on the 1898 Pictorials and regular news items in Philatelic journals.

With the Regional Groups, more than 200 members had attended Society meetings this year.

7. All Honorary Officers of the Society automatically resign at the end of the year but are eligible for re-election. No written nominations had been received and the Committee proposed the following Officers:

President	Ernie Leppard
Vice Presidents	Allan Berry, Alan Gardiner, Tom Hetherington, John Smith, Dr. K. McNaught
Chairman (E)	Lewis Giles
Vice-Chairman	Prof. Derek Diamond
General Secretary (E)	Keith Collins
Treasurer (E)	Ernie Leppard
Packet Secretary	Bernard Atkinson
Editor of <i>The Kiwi</i> (E)	Dr. Andrew Dove
Librarian	John Woolfe
Auctioneer	John Woolfe
Membership Recorder	Ernie Leppard
Meetings Reporters	Derek Diamond & Andrew Dove
Publicity Officer	Paul Wreglesworth

Auction Officers	Eric and Elizabeth Lewis
Auditor	John Smith
Representative in N.Z.	John Watts

Committee members: Northern Group Chairman (Geoff Wragg) and Secretary (Jack Lindley), Midland Group Rep. (Eric Lewis), Scottish Group Rep. (John Studholme) and Dr. Phillip Hoare.

The election of those named was proposed by Margaret Frankcom and seconded by Maurice Allen. The election was unanimous.

Members of the Executive Committee are indicated (E).

8. The programme for 1999 was proposed as follows:

London Meetings:

30th January	World War II - led by Ernie Leppard
22nd March	Annual Competition with discussion during judging
29th May	Workshop on perforations (leader to be announced)
31st July	Queen Elizabeth II - led by John Smith
18th September	Birmingham Full Society meeting - subject to be announced
27th November	Kiwi Day, A.G.M. and Auction

The Northern Group will meet in Orrell on: February 13th, June 5th, September 11th, October 16th and November 13th.. Alan Green, Secretary of the Waterlow Study Circle will display at the first meeting.

The Scottish Group will meet on March 20th, June 6th and October 16th.

The Midland Group will meet on April 17th and September 18th.

9. Margaret Francom presented the Society awards and medals won at the Annual Competition:

Classic section	Kiwi Shield	Paul Wreglesworth
Runner up	Paua Musical Box	Ernie Leppard
Moderns 1	Stacey Hooker Cup	John Smith
Runner up	Paua Book Ends	Dr. Philip Hoare
Moderns 2	Noel Turner Trophy	John Smith
Runner up	J.D.Evans Trophy	Ernie Leppard
Moderns 3	David Forty Salver	John Smith
Runner up	Campbell Paterson Trophy	Ernie Leppard
Postal History	John J. Bishop Cup	John Woolfe
Runner up	Barton Bowl	Andrew Dove

The special medal for the best entry from a member who has not won a class before went to John Woolfe.

The F.G. East Jubilee Goblet for the best contribution to *The Kiwi* went to L.D.McConnell for his article on "New Zealand Mails via Vancouver".

10. Any other business: Keith Collins has obtained information about Palmplex '99. There was some discussion about the dubious nature of New Zealand Post's current issuing policy. There was further debate about the Society's approach to a display at Stamp 2000.

The meeting expressed its thanks to its two retiring officers, President John Smith and Chairman Alan Baker. The meeting closed at 12.00.

The Annual Society auction started at 13.30 with over 400 lots. Lewis Giles was the Auctioneer with Ernie Leppard recording and John Buchanan and Keith Collins assisting. There was a healthy number of book and postal bids totalling £3,082 and room bids adding £1,256. Thanks to those who donated lots for the Society's benefit; these raised £67.50.

The auction finished at 16.50.

E.W.L.

#### NOTES OF NORTH OF ENGLAND REGIONAL MEETING HELD NOVEMBER 14TH, 1998

Nine members were present and apologies were received from a further five. The first business of the meeting was to discuss the possibility of holding a joint meeting with the Scottish Group. This was unanimously agreed to be a desirable development and it is possible that the meeting will be held in Carlisle on October 16th, 1999. Further details will be published in *The Kiwi*.

The theme for the meeting was Cinderellas. Our members gave displays showing the great range of Cinderella material available to New Zealand collectors. On display were early items such the Express Freight Company stamps through to the New Zealand Post "Best of 97" miniature sheet.

During the break, the raffle was drawn with the proceeds going to the Central American Hurricane Relief Fund. The meeting closed at 16.30.

#### NOTES OF THE MEETING OF THE SCOTTISH GROUP HELD ON OCTOBER 17TH, 1998

The meeting was hosted by David Stalker in Erskine. Ten members were present. Dates for future meetings were agreed and will be published in *The Kiwi*.

David Stalker started the afternoon with a display of multi-positive flaws and retouches of the 1977 Silver Jubilee and the 1967 Centenary of the Royal Society of New Zealand: interestingly, he related flaws etc. to the 1977 issue to sheet positions. David McGill gave a display ranging between the 1920 Victory issue and the 1935 Airmail and Pictorial issues. Ken Andison followed with an interesting display of commemoratives issued between 1948 and 1953.

John Studholme showed examples of used stamps related to a map of New Zealand and an example of the "Limited Edition" 1898 Pictorial Centenary Collection. Those present felt it to be a worthy production.

Alexander McCulloch showed selected items from his collection of the 1970 - 1974 issue. Included were imperforate pairs, missing colours and offsets. He was followed by Dave Edwards who showed his collection of the stamps, booklets and coil stamps resulting from the reduction in the postal rate in 1991.

The afternoon finished with Pat Riddell's display which focussed on the 1/- K.G. V; included were Plate Blocks, shades and perforation varieties. Also included was a small display of the First Pictorial 1/-.

The meeting closed at 17.00 hrs.

#### ANNUAL COMPETITION

This will be held on Saturday, 27th March, 1999, at the Central Club, 16 - 22, Great Russell Street, London, WC1B 3LR. Details of the classes and awards are as follows:-

##### CLASSIC SECTION

The issues of Queen Victoria and the First Pictorials.

Condition	30 pts.
Completeness	20 pts.
Presentation	20 pts.
Philatelic Knowledge	20 pts.
Judge's Discretion	10 pts.
	100 pts.

##### AWARDS

Noel Turner Trophy and  
Silver-Gilt Medallion.  
  
Runner-up:  
John D. Evans Trophy.

### MODERN SECTION 1.

Stamps issued during the reign of King Edward VII and King George V, the Penny Universals, the Penny Dominion and the Second Pictorial Definitive issue.

Condition	20 pts.	Kiwi Shield and
Completeness & Rarity	30 pts.	Silver-Gilt Medallion.
Presentation	20 pts.	
Philatelic Knowledge	20 pts.	Runner-up:
Judge's Discretion	<u>10 pts.</u>	Paua Musical Box.
	100 pts.	

### AWARDS

### MODERN SECTION 2.

Stamps issued during the reign of King George VI and the pre-decimal issues of Queen Elizabeth II.

Marks as Modern Section 1.	Stacey Hooker Cup and Silver-Gilt Medallion.
	Runner-up :- Paua Book Ends.

### AWARDS

### MODERN SECTION 3.

Stamps issued since decimalisation.

Marks as Modern Section 1.	David Forty Salver and Silver-Gilt Medallion.
	Runner-up :- Campbell Paterson Trophy.

### AWARDS

### POSTAL HISTORY SECTION.

Knowledge and personal study displayed	40 pts.	John J. Bishop Trophy
Originality and Importance of the Exhibit	20 pts.	and Silver-Gilt Medallion
Relative Condition	10 pts.	
Presentation, including write-up	20 pts.	Runner-up: Barton Bowl
Judge's Discretion	<u>10 pts.</u>	
	100 pts.	

### AWARDS

Each entry shall consist of twelve normal sheets, each sheet to be contained within a protective cover and numbered in the order of sequence. It is desirable that a short note, of not more than eighty words, should be placed at the back of the first sheet, between the sheet and the plastic cover, giving for the aid of the Judge, the theme of the entry, and calling attention to any items of interest and rarity.

Postal Entries should be sent to :-

K.C. Collins, 13, Briton Crescent, Sanderstead, Surrey, CR2 0JN

Such postal entries should arrive with Keith Collins not later than TUESDAY, 23rd MARCH, 1999. It is regretted that entries from overseas members cannot be accepted, due to problems that have been encountered with the Customs and Excise Authorities.

Entries will be accepted on the day if produced to one of the Society's Officers immediately on arrival, and before judging commences.

Once again, an Award will be made to the best entry submitted by a Member who has not previously won an Award in the Society's Annual Competition. Also, the Officers and Committee are hoping for an improved turn out from last year. It is not difficult to win one of the trophies listed above. Many have before now.

### AWARDS TO MEMBERS

Congratulations to our members Mike Shand and Lew Giles who were, respectively, second and third in Class 1 of the Air Mail Society of New Zealand Inc. 1998 Annual Society Competition.

### PALMPEX 99

This exhibition was reported in the last issue of *The Kiwi*. It will be held in Palmerston North between October 1st and October 3rd, 1999. It has been suggested that if enough members wished to visit, it might be possible to make special travel arrangements. If anyone is interested, can they contact Lew Giles (66, Bower Mount Roads, Maidstone, Kent ME16 8AT).

### A BELGIAN COLLECTOR

A letter has been received from by a collector living in Brussels who wishes to exchange New Zealand stamps for European stamps (mainly French and Belgian). Would anybody interested please contact the Honorary Secretary.

### COMMITTEE MEETING

Will Officers of the Society and members of the Committee please note that there will be a Meeting of the Committee following the General Meeting to be held on January 30th 1999. An Agenda will be circulated before the Meeting.

LEWIS GILES, CHAIRMAN

### COMING EVENTS:

#### CHANGE OF AUCTION DATE

Notification was contained within the last mailing of *The Kiwi* of an auction to be held by the Victoria Stamp Company on December 4th, 1998. Due, in part, to the large response from members of the New Zealand Society of Great Britain, despatch of the catalogue has been delayed. Consequently, the sale date has been changed to January 22nd, 1999.

#### DISPLAY BY A MEMBER

Ernie Leppard will be giving a display of 1898 Pictorials and Penny Universals to the Bristol Philatelic Society on Wednesday January 20th, 1999. The meeting will be held at the Redland Park United Reform Church, Whiteladies Road, Bristol starting at 19.30. Members of the New Zealand Society of Great Britain are welcome to attend.

#### BRITISH LIBRARY PHILATELIC COLLECTIONS RE-OPEN

The permanent Philatelic Exhibition at the British Library re-opened in June. The exhibition, displayed in 1,000 frames, is the best permanent display of world classic philatelic material.

Further information may be obtained from: The British Library, Philatelic Collections, 96, Euston Road, London NW1 2DB

#### "AUSTRALIA '99"

The second Bulletin has now been issued concerning this International Stamp Exhibition which will be held between March 19th and 24th, 1999. There will be 180 stands for Trade and Postal Administrations. The Court of Honour will include displays from Her Majesty Queen Elizabeth II, HSH Prince Rainier III of Monaco, Princess Maha Chakri Sirindhorn of Thailand (who has collected postcards and letters that she has addressed to herself from all parts of Thailand and abroad during her travels), Australia Post, the Royal Philatelic Society of London, NPM - London (Freddie Mercury collection), International Olympic Committee, National Philatelic Museum



(Washington DC.) subject: RMS. Titanic, US Revenues from Robert Cunliffe and Richard Juzwin Pty Ltd's proof sheets of Australias 1d George V.

For further information contact: Kate Jackson, Executive Officer, **Australia 99**, GPO Box 1999, Melbourne VIC 3001, Australia.

---

**"TRAINS 1999"**

The prospectus has been issued for the "Trains 1999" International Stamp Exhibition which is to be held at Wembley Exhibition Centre, London between April 15th and 18th, 1999. This is the successor to this years successful "Birdpex '98". There is much fascinating New Zealand Railway material available and, hopefully, members will take the opportunity to show on a thematic basis.

For more information contact: "Trains 1999, Francis Kiddle, Punch Tree House, Reading Road North, Fleet, Hants GU13 8HS" (Fax No. 01252 810766).

---

**WHAKAPEX 99**

Whakatane Philatelic Society will hold a competitive sixteen-page exhibition on 24-26 September, 1999. The exhibition is to celebrate 125 years since the opening of the Post Office in Whakatane. Further information is available from: Exhibition Secretary, Whakatane Philatelic Society Inc., P.O.Box 114, Whakatane, New Zealand.

---

**INFORMATION RECEIVED:**

**NEWS RELEASE**

*Editors Note: the following article is an amalgamation of two News Releases: the initial one and background information: modifications have been made to avoid duplication of information.*

**STAMP MONTH TO FEATURE UNDERWATER WORLD STAMPS**

29 September 1998

The magic and mystery of the Underwater World is the theme of New Zealand Post's latest stamp issue, due for release on October 7. The Underwater World is also the feature of the company's annual Stamp Month promotion that will run throughout October.

New Zealand Post General Manager Russell Watson said the stamp issue is designed to pay tribute to the important role the marine world plays in the New Zealand way of life.

"The ocean, and sea life, has a strong role in New Zealand's history and is a major part of our economy. This issue, which features a range of marine life, also marks the United Nations 1998 Year of the Ocean.

Sea life depicted on the issue include the Moonfish, Mako shark, Yellowfin tuna and Giant squid, which all feature on the 40 cent stamps, and the Porcupine fish, Striped marlin, Eagle ray and Sandager's wrasse, which feature on the 80 cent stamps.

The format for the Underwater World stamp issue is gummed se-tenant blocks of four 40 cent stamps and four 80 cent stamps.

Mr Watson said the Underwater World stamp issue will be the main feature of this year's Stamp Month - New Zealand Post's annual celebration of stamps and stamp collecting. In addition to the stamps and first day cover, maximum cards are also available.

"Stamp Month aims to encourage people, particularly children, to get involved in stamp collecting as a hobby with a view to it being a life long interest," Mr Watson said.

This year's Stamp Month will include a range of activities that will take place throughout the country including displays, stamp club talks on junior collecting, and design-a-stamp competitions.

"One of the aims of the Stamp Month promotion is to grow membership to New Zealand Post's Stamp Hunters Club which is designed specifically for younger collectors and is a great way for children to share their interest in stamp collecting and learn more about the hobby."

To assist children who are interested in stamp collecting to get started in the hobby, the Underwater World stamp issue includes a Crazy Combo Pack is available in Post Shops, which is designed in a fun way to introduce children to the wide world of stamps

A Wet 'n' Wild competition has also been included as part the Underwater World stamp issue.

## **UNDERWATER WORLD STAMP ISSUE**

### **BACKGROUND INFORMATION**

- The Underwater World stamp issue is made up of two sets of gummed se-tenant blocks of four 40 cent stamps and four 80 cent stamps featuring some of the more colourful and interesting marine species found in New Zealand waters.
- Stamp products include the stamps, first day cover, maximum cards and the Crazy Combo Pack.
- The Crazy Combo Pack includes a set of eight mint stamps, a wall chart, mounts, a magnifying glass, a maximum card, and one years subscription to the Stamp Hunters Club, and is available at Post Shops or by visiting [www.nzstamps.co.nz](http://www.nzstamps.co.nz).
- A Wet 'n' Wild competition where anyone, who purchases an Underwater Crazy Combo Pack or hangsell products from Postshops, or underwater World stamp products from the October/November Stamp Hunters magazine, can go in the draw to win one of 1000 prizes including a family trip to the Gold Coast of Australia.
- The stamps and first day cover were designed by Geoffrey Cox of Auckland and printed by Southern Colour Print.

### ***Moonfish - 40 cents***

The moonfish grows up to 1.5 metres in diameter. An unusual looking disc-shaped fish, it becomes an increasingly popular item on restaurant menus in New Zealand, Australia and hawaii. Its crimson fins and large eyes rimmed with gold give it a tropical appearance, yet it lives many miles offshore in the surface waters of warm and temperate seas.

### ***Mako shark - 40 cents***

The mako shark is one of the fastest in the world. A formidable shark, makos have been clocked travelling over 40 km per hour. With a stunning array of physical and sensory abilities unparalleled within the world of fish, the mako is estimated to live for as long as 25 years.

### ***Yellowfin Tuna - 40 cents***

The yellowfin tuna can be found in New Zealand waters during the summer months and are a prized catch for fisherman. Growing up to 180 kgs in weight, its long, bright yellow fins, dark blue back and silvery belly distinguish the fish from other varieties of tuna.

### ***Giant squid - 40 cents***

Labelled one the great mysteries of the deep, encounters with the giant squid are very rare. An enormous creature, the squid are said to grow up to 18 metres in length and to have a beak powerful enough to cut through a steel cable. With eight arms and two tentacles, giant squid have been reported to kill small whales and sharks.

### ***Porcupine fish - 80 cents***

The porcupine fish is a strange looking creature that is both prickly and deadly. Protected on the outside by spines of up to 2 cm, the fish can inflate itself with water to the size of a soccer ball

when threatened. The porcupine fish carries the poison TTX (Tetradotoxin) which is deadly to both other species and humans if eaten.

***Striped marlin - 80 cents***

The striped marlin arrive in New Zealand's waters each year with the onset of summer. The most common of New Zealand's legendary billfish species, the marlin are sought after by game anglers and can travel at speeds of up to 80 km per hour.

***Eagle ray - 80 cents***

Eagle rays are mainly found in shallow coastal water of the North Island. Well camouflaged by their brown or olive colour with large bluish-grey spots, the eagle ray is one of 21 species of ray found in New Zealand waters. The bone like barb at the base of its tail is the ray's only defence and contains a tissue necrotic toxin.

***Sandager's wrasse - 80 cents***

Young Sandager's wrasse provide a 'cleaning service' to other sea life, picking the tiny parasites carried by nearly all fish out of their fins when the fish pass. As the sandager mature, young fish which are cream with a striking yellow band down the length of their bodies, change colour dramatically. The adult females have a cream body with broad fawn strokes and light splashes of lemon markings while males develop a rich colouring of brown, yellow and white stripes on a fawn to mauve body and a head that is purple and turquoise.

-----  
**FAMOUS TOWN ICONS STARS OF LATEST STAMP ISSUE**

5 October 1998

From 7 October, 10 of this country's most famous town icons will be transformed into New Zealand Post's latest stamp issue, the Town Icons self-adhesive stamp booklet.

The ten Town Icons include: **Te Kuiti Shearer, Tekapo Sheep Dog, Ohakune Carrot, Napier Pania of the Reef, Kaikoura Crayfish, Hawera Cow, Gore Brown Trout, Riverton Paua Shell, Paeroa L & P bottle and Te Puke Kiwifruit.**

The town icons were identified last year when New Zealand Post held a nationwide competition amongst councils to reveal New Zealand's 10 most recognised town icons. An independent judging panel then had the task of selecting the final ten icons to appear on the stamp booklet.

"New Zealand Post is proud to release this kiwi-style stamp issue," said Wendy Riley, Marketing Manager, New Zealand Post Stamps Business Unit.

"The stamps are a unique and appealing way to highlight the extraordinary lengths some of our communities have gone to, using amazing visual statements, and putting themselves on the map.

"These icons are all special to each of the ten towns and peculiar to our country, and are a celebration of New Zealanders sense of creativity and ingenuity," said Ms Riley.

The stamp booklets and official first day cover were designed by Donna McKenna of Wellington and printed by Southern Colour Print of Dunedin.

-----  
**NEW ZEALAND'S URBAN LANDSCAPES VS EARLY SETTLEMENT FEATURE IN NEW STAMP**

10 November 1998

The contrast between New Zealand's early settlements and present-day urban landscapes is the focus of New Zealand Post's new stamp issue "Urban Transformation" being released on 11 November 1998.

Six towns and cities feature in the series, each showing an image from the late 19<sup>th</sup> or early 20<sup>th</sup> century, alongside a photograph taken in approximately the same place today.

The towns and cities featured are Wellington (40 cents), Auckland (80 cents), Christchurch (\$1.00), Westport (\$1.20), Tauranga (\$1.50), and Dunedin (\$1.80).

The "Urban Transformation" issue is the third in the "Millennium" stamp series which focuses on aspects of New Zealand's development and history leading up to the year 2000. The previous two issues were "A New Beginning" released in March 1998, and "The Discoverers" released in February 1997.

Wendy Riley, Marketing Manager of New Zealand Post Stamps Business Unit said the Millennium stamp series celebrates some of the important events of our past and chronicles the transformation that has taken place in New Zealand.

"New Zealand is considered by some as a young country in international terms, but the contrast between our early settlement beginnings and our urban development now is quite dramatic."

"With the year 2000 just around the corner, we wanted to celebrate where we have come from, as well as show the present day urban landscape."

The stamps and first day cover were designed by Niki Hill of Duo Design in Auckland, and printed by Southern Colour Print of Dunedin.

#### SPECIAL DATESTAMPS

##### TARAPEX '98 NATIONAL STAMP EXHIBITION



Three special pictorial date stamps were issued to commemorate the Tarapex '98 National Stamp Exhibition held in New Plymouth on August 7-9 1998.

##### OPENING OF THE CHRISTCHURCH PHILATELIC CENTRE

A special datestamp was used on 7 & 8 November to commemorate the opening of the new Philatelic Centre in Christchurch.



##### FIRST CITY TO SEE THE NEW MILLENNIUM



A special datestamp will be issued on Friday 1 January 1999 in Gisborne. This special date stamp is the third to be produced in Gisborne in January leading up to the new millennium.

### **CURRENT EVENTS:**

#### **AN UPDATE ON COMMERCIAL POSTAL OPERATORS**

ROBIN. M. STARTUP

Readers may be interested to know that there are now 14 organisations registered with the NZ Ministry of Commerce as postal operators. Information transcribed from the website register is shown in Figure 1. An example of the information available on each provider is shown in Figure 2.

At this stage, NZ Document Exchange and NZ Post Ltd were pre -1988 national coverage operators. Fastway is a regional competitive operator with the aim of gaining national coverage. Most of the remaining are "local" - for example, Local Post Kaikoura delivers letters at 30c each (against a postal rate of 40c) for the District Council and major businesses in the farming and tourist town of Kaikoura. The future??

#### **The Postal Services Act 1998-10-31 Register of Postal Operators**

<b>Operator</b>	<b>Registration Date</b>
<u>Dagelet, John</u>	30 July 1998
<u>Fastway Post New Zealand Limited</u>	30 June 1998
<u>Local Post Kaikoura</u>	25 June 1998
<u>Mount Post</u>	2 October 1998
<u>New Zealand Document Exchange Limited</u>	29 April 1998
<u>New Zealand Post Limited</u> (deemed to be registered by s.63 of the Postal Services Act 1998)	1 April 1998
<u>Pete's Post</u>	30 July 1998
<u>Posties Choice New Zealand Limited</u>	17 July 1998
<u>Presort Limited</u>	20 July 1999
<u>Quantum Post</u>	30 September 1998
<u>Quick Post</u>	12 August 1998
<u>Rural Couriers Society Limited (Coural)</u>	9 October 1998
<u>SelectPost Limited</u>	5 May 1998
<u>Smart Post</u>	1 September 1998

This is a copy of the register of postal operators held by the Ministry of Commerce. The original may be inspected during ordinary office hours at the Head Office of the Ministry, 33 Bowen Street, Wellington, New Zealand.

Figure 1

Details available for Presort Ltd.:

Name of Operator	Presort Limited
Registered Office	6/13 Beatrice Tinsley Crescent Albany Auckland
Place of Business	6/13 Beatrice Tinsley Crescent Albany Auckland
Postal Address:	PO Box 302-036 North Harbour Postal Centre Auckland
Telephone	09-415 4979
Facsimile:	09-415 4003
E-mail Address:	-
WWW Address:	-
Chief Executive:	Graham Leslie Preston
Directors:	Graham Leslie Preston Timothy Charlesworth
Contact Person	Graham Preston
Contact's Designation:	Director

Figure 2.

**RESPONSES TO PREVIOUS ARTICLES:**

FURTHER HIGGINS CORRESPONDENCE

DR. K. J. McNAUGHT

(Editors Note: the illustrations in this follow-up are numbered sequentially following those in the original article for ease of reference)

Further to Lewis Giles article in *The Kiwi* (1), I can report two further covers in my collection.

The first (Figure 4) is addressed to James Higgins at Wallbridge Nr. Stroud in Gloucestershire, England. It bears a pair of 3d Chalons with a manuscript "B" cancellation. This is identified as Big Paddock which was a gold mining settlement located 4.8 kilometres NE of Hokitika. It is recorded as having a post office between 1.7.1868 and 30.6.1882 (2). On the reverse, it is postmarked Hokitika JY 9 1868, Christchurch JY 14 1868 and Stroud Au 29 68.

The second (Figure 5) is addressed to Henry Higgins and carries a 6d Chalon cancelled by a "C over 21" oval obliterator. It carries backstamps of Hokitika JY 7 70 and Stroud Oc 10 70.

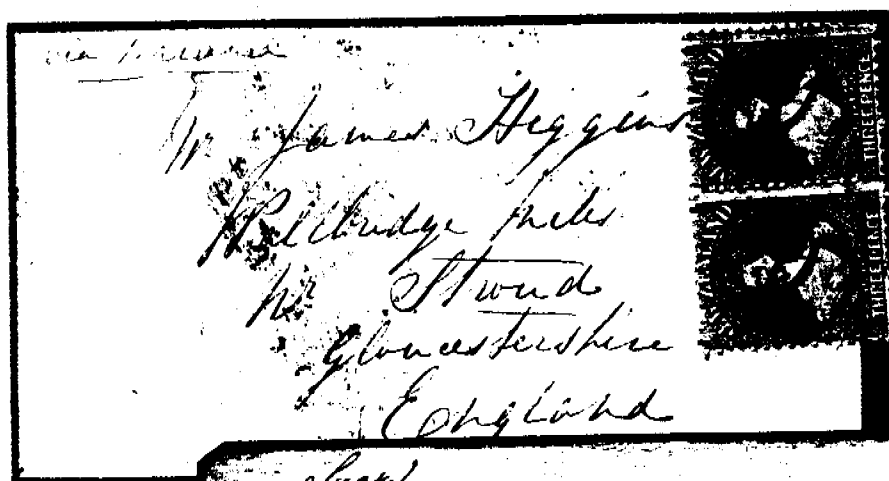
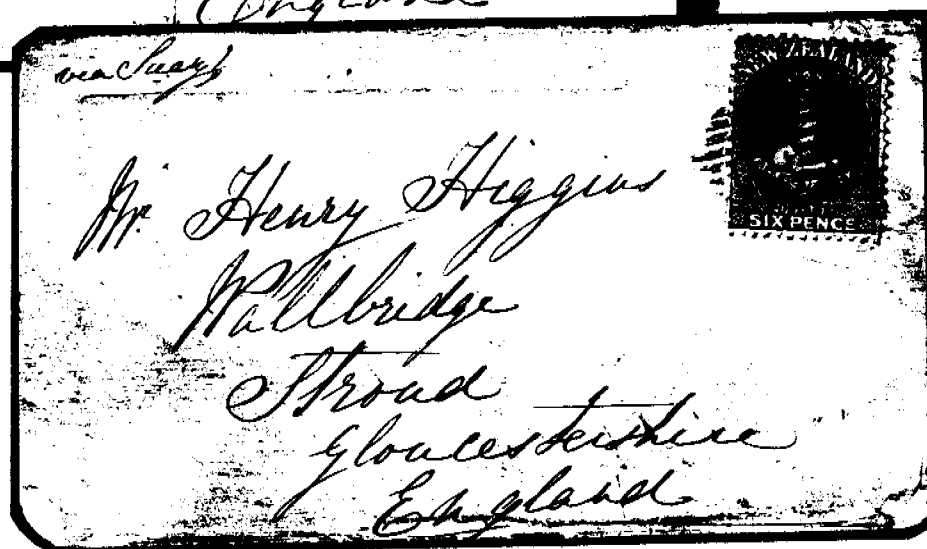


Figure 4

Figure 5



The "C over number" cancellations are described in Volume 7 of the Handbook of the Royal Society of New Zealand (3).

References:

1. Giles L, "Higgins Correspondence - West Coast Goldfields". *The Kiwi* (1998) Vol. 47 No.6. Pp119 - 121
2. Startup RM "New Zealand Post Offices" Pub. The Postal History Society of New Zealand (1977).
3. "The Postage Stamps of New Zealand" Vol. VII (1988). Pub. The Royal Philatelic Society of New Zealand (Inc.) Pp. 226 - 227.

A COMMENT ON "POURERE - POURERERE 1863 - 1981"

DR. K. J. McNAUGHT

With reference to Safari's article on this subject (1). I would interpret the year date in Figure 2 as "82" not "84.



Figure 1



Figure 2

The manuscript "P" shown in Figure 3 and 4 of the original article is similar to a number in my collection (Figure 1 & 2). I believe them to have originated from Petane, a settlement that is located 9 miles north of Napier and was renamed Bay View to avoid confusion with Petone.

In my experience, the Pourerere coin datestamp (Figure 5 in Safari's article) is extremely rare; it is missing from my collection.

Reference:

1. Safari "Pourere - Pourerere 1863 - 1891". *The Kiwi* (1998) Vol. 47. No. 6. Pp. 117 - 119.

### PERMIT MAIL - A COMMENT

ROBIN STARTUP

Allan Berry's useful article on this subject (1) brings to our notice the little known practice of letters being prepared in one country but being entered into the postal delivery stream of the destination country by a "remailer". The arrival of efficient freight jet-engined aircraft in the 1970s was followed by the rapid development of firms moving urgent freight and packages, by a network of couriers around the country, and internationally through a series of major trans-shipment hubs. Although this was in direct opposition to airmail services, in general, Governmental postal services, through bureaucratic restraints and conservatism, were unable to respond.

The movement of individual articles by international airmail or by courier services has remained the function of the various Post Offices. However, the international urgent freight movers have largely captured movement of bulk prepared but individually addressed mail. Perhaps two of the better known firms today are TNT Mailfast and DHL Worldwide.

Such mail is carried as bulk, therefore, the per unit cost to the originator is considerably less than if each item had been posted airmail. On arrival of the bulk mail in the destination country, such as New Zealand, it is entered into the local post office for local carriage delivery. As this mail is presented largely presorted and all faced up, the remailer pays only the concession bulk-postage rate.

However, the New Zealand Post Office requires the remailer to mark each item "Postage Paid" with an authorised permit number - used in the accounting process - and also the remailer's address. This means that should New Zealand Post be able to deliver the item it becomes the responsibility of the remailer to return the item to the overseas based sender.

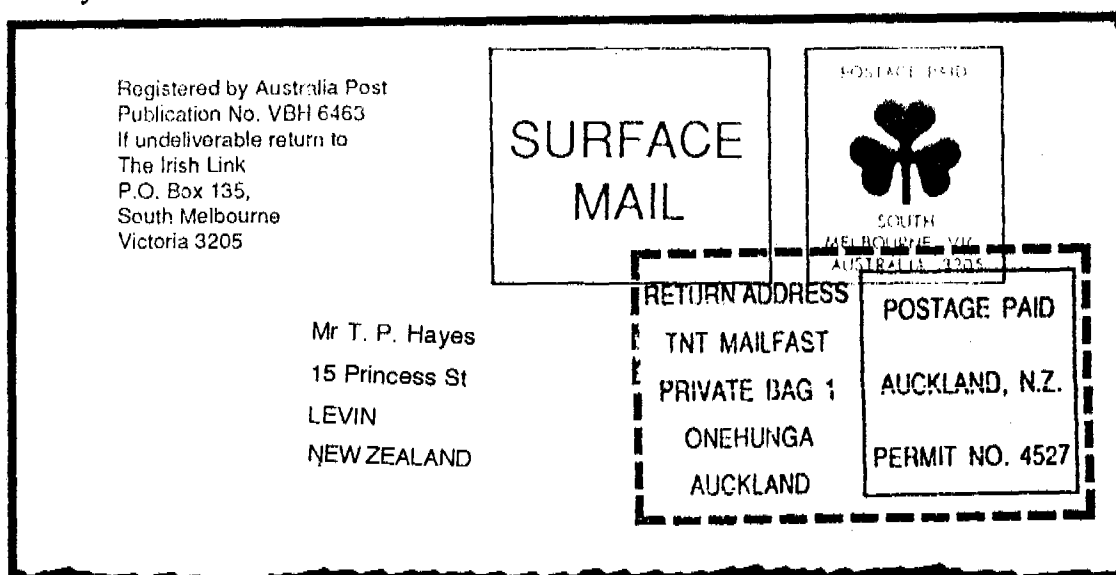


Figure 1

An envelope prepared in Australia (Figure 1) demonstrates this. TNT so frequently handles bulk remailings that a text remains in the computer memory of an inkjet cancelling machine at the Auckland Mail Centre.

Reference:

1. Berry AP "Permit Mail - an Interesting Process". *The Kiwi* (1998). Vol. 47. Pp. 116-7



## AN EXPLANATION OF THE PRIMARY P.M. POSTMARK

ROBIN M. STARTUP

I can help Ian Samuel with his query about this strike (1). Some further examples are shown in Figures 1, 2 and 3.

These datestamps are used to date letters mishandled, missed postage cancellations or missorted during the daily mail processing runs. The Wellington Mail Centre operates over two shifts:

- (a) Afternoon, from around 1500 to 2400 cancelling the incoming day's mail from around the catchment area, hence the P.M. in the datestamp.
- (b) Morning, from 2400 to about 0700 sorting locally posted and incoming out-of-town mail for delivery; hence the A.M. in the datestamp.

The METRO A.M. datestamp is used to date missorted mails received in the Wellington metropolitan distribution areas.

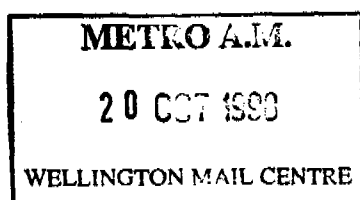


Figure 1

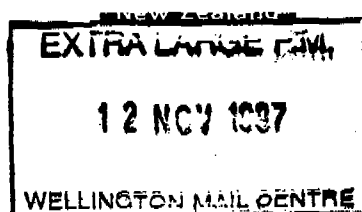


Figure 2

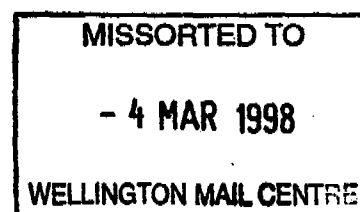


Figure 3

I was amused by Ian's suggestion of P.M. being an abbreviation for Post Mortem as a previous suggestion had been Prime Minister. There was a comment in the N.Z. Press that the EXTRA LARGE P.M. cancellor was known to collectors as the "shipley" after our rather buxom Prime Minister, Mrs. Jenny Shipley. The datestamp disappeared in November 1997 shortly after the comment was published!

Reference:

1. Samuel TI, "Help Please: PRIMARY P.M. STRIKE". *The Kiwi* (1998) Vol. 47 No. 6. P. 114

## A PLEA TO THOSE WRITING ON MAIL SHIPS OR MAIL ROUTES

JOHN WOOLFE

Could I ask that correspondents who write articles about mail ships or mail routing include details of arrival datestamps as well as those applied in New Zealand. From personal experience, the routes are much easier to verify once the receipt date in the United Kingdom is known. This often shows that the manuscript instruction on the envelope is incorrect. For example, a date in the U.K. coinciding with arrival of a P. & O. ship from Alexandria shows that the cover travelled via Australia even if the instruction is "via San Francisco" or whatever. I would have been happy to look into the "via Vancouver" mail recently reported, but absence of arrival dates would make any results speculative.

## ORIGINAL ARTICLES AND READERS QUESTIONS:

### LAY MARKS ON THE 1<sup>D</sup> LAKE TAUPO - 1898 PICTORIALS

ERNIE LEPPARD

*This article is part of an article printed in The Journal of the Waterlow Study Circle (April, 1998) and is reprinted with the permission of the Author.*

Three plates were used to print this value. A series of Lay marks were used to distinguish these plates and the marks do not appear to have been properly described. Stanley Cross - Rudkin, made mention of these marks in an article published in the Waterlow Study Circle Journal (1) but there seems to have been no further correspondence on the subject. The Study Circle (2) went on to

study these marks in other issues printed by Waterlow & Sons, especially Labuan and Borneo, but do not appear to have arrived at a definite conclusion as to their utilisation.

"Lay mark" is a printers term used to describe marks scratched into the plate when more than one plate is used to print a stamp. They enable accurate superimposition of one plate on the other.

I want to make a suggestion as to the way in which these marks were used on this value. My explanation is pure conjecture and I would very much like other views to be aired.

The process of production starts with the printing of the Centre Plate. They were printed in blue in sheets of 80 (10 x 8). To print the second (Frame) Plate, the Plate was fixed onto a bed and inked and wiped clean. The dampened paper, on which the Centre plate was already printed, was then aligned onto the Frame Plate by means of the lay marks (a series of dots and dashes) which were positioned between rows 4 and 5. A printing blanket is laid on top and a weight passed over whole causing the paper to be impressed into the recesses of the Frame Plate.

As a note, it is apparent that this is laborious and labour - intensive process that will be more expensive than printing the value in a single colour. This accounts for the complaints made by the New Zealand authorities about the cost which were chronicled in the article by Professor Hamilton re - published in *The Kiwi* (3).

The particular interest of these marks to collectors of the First Pictorials is that each Plate had different markings and they are, therefore, effectively plate numbers allowing the identification of the Plates.

The markings for each Plate are shown in Figures 1 to 3.

Plate I: Three dots and two dashes (6mm. and 5mm. long) below Row 4:

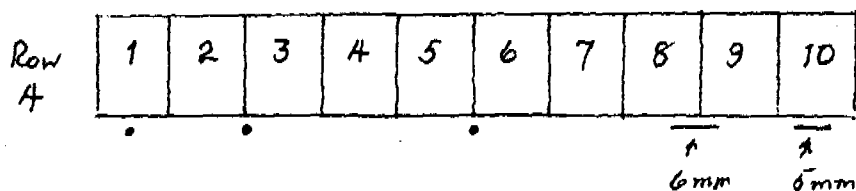


Figure 1

Plate II: Two dots and one dash (15mm. long - a double line) below Row 4:

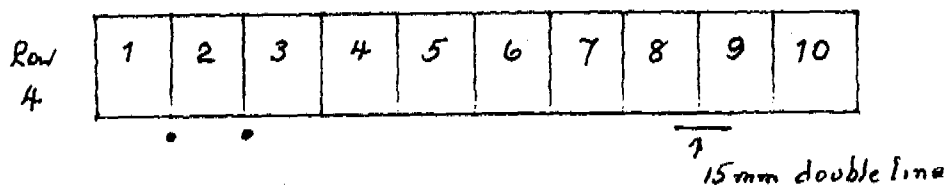


Figure 2

Plate III: One dot and one dash (15mm. long - a triple line) below Row 4:

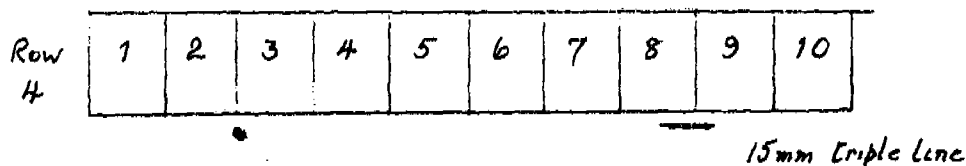


Figure 3

Clearly, only portions of these markings can be seen on individual stamps but blocks can easily be plated. Further aid to Plate identification is provided by re-entries occurring in the relevant parts of the sheet. Row 4 stamp 8 (Figure 4) has a prominent graver flaw measuring 5mm. above the top right corner; the lay mark can be seen below the stamp. Row 5 stamp 8 (Figure 5) has a re-entry to the top right corner and the lay mark may be seen at the top of the stamp and is part the 15mm. double line.



Figure 4

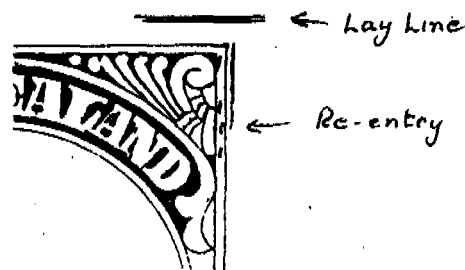


Figure 5

In previous issues of *The Kiwi*, the corner markings of the Frame and Centre Plates have been described (4, 5, 6, 7). For the 1d. Lake Taupo the following Plate combinations are known to have been used:

- Frame Plate I with Centre Plates A & D**
- Frame Plate II with Centre Plates B & C**
- Frame Plate III with Centre Plates D & A**

It would appear that Frame Plate I was initially used with Centre Plate A. The Centre Plate seems to have broken up and been replaced by Centre Plate D. The combination of Frame Plate I and Centre Plate D seems to be rare.

Frame Plate III seems to have initially been used with Centre Plate D. It appears, however, to have been little used and, possibly, held in reserve. Centre Plate A is also known to have been used in conjunction with Frame Plate III. This usage appears to be extremely rare; I have only seen two examples in many years of examining this issue.

#### References.

1. Cross - Rudkin S. "Printers Marks Found on New Zealand Stamps of 1st Pictorials" *Waterlow Study Circle Journal* (1981). October 31. 2/39.
2. Hubbard Rev. D. "Registration Guide Marks/Lay Marks". *Waterlow Study Circle Journal* (1986). October 25. 16/33.
3. "The Centenary of the First Pictorials" *The Kiwi* (1998). Vol. 47. No.2. Pp. 32 - 39.
4. Leppard EW. "The 'Secret' Waterlow Plate Markings. First Pictorial London Prints - One Penny. Lake Taupo". *The Kiwi* (1987). Vol. 36. No. 4. Pp. 65 - 72.
5. Leppard, EW. "The 'Secret' Waterlow Plate Markings. First Pictorial London Prints - One Penny. Lake Taupo". *The Kiwi* (1988). Vol. 37. No. 1. Pp. 19 - 22.
6. Leppard, EW. "Waterlow Plate Marks - First Pictorials" *The Kiwi* (1992). Vol. 41. No.5. Pp. 102 - 104
7. Leppard, EW. "Waterlow Plate Marks - First Pictorials" *The Kiwi* (1996). Vol. 45. No.2. Pp. 30 - 35

#### HEALTH STAMP BOOKLETS 1998

ROBIN M. STARTUP

In 1998, for the first time, the Health stamps have appeared in booklet form. Although the booklets were not issued through Post office, they were produced and sold by Post Shops.

The design of the front and back covers is shown in Figures 1 and 2. A different booklet produced by the Te Kainga Whaiora Children's Health Camp committee was sold through Gisborne Post Shop (Figures 3 and 4).



Figure 1

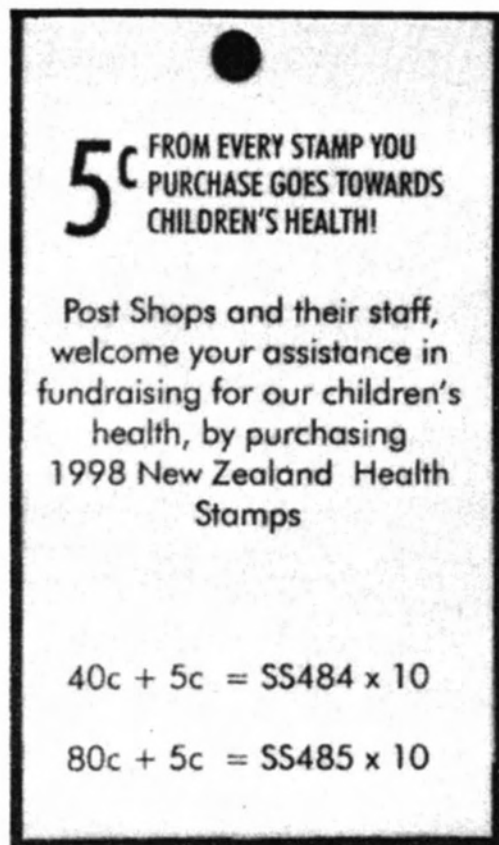


Figure 2

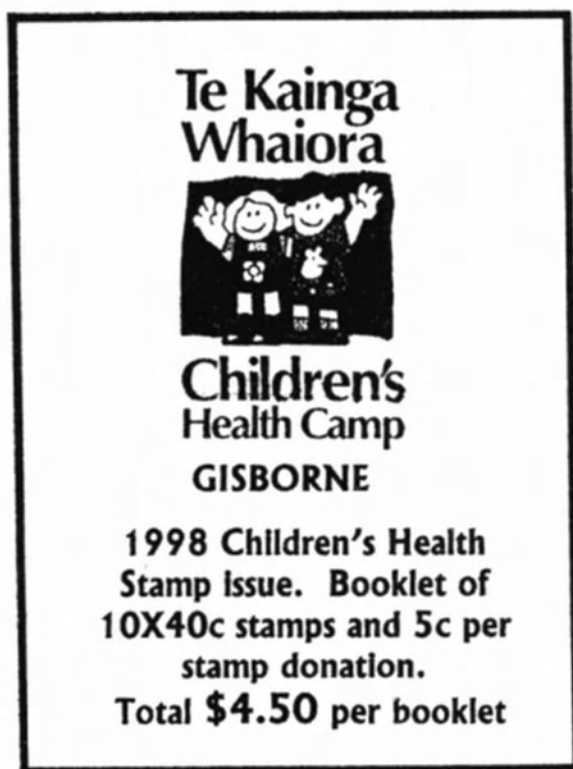


Figure 3

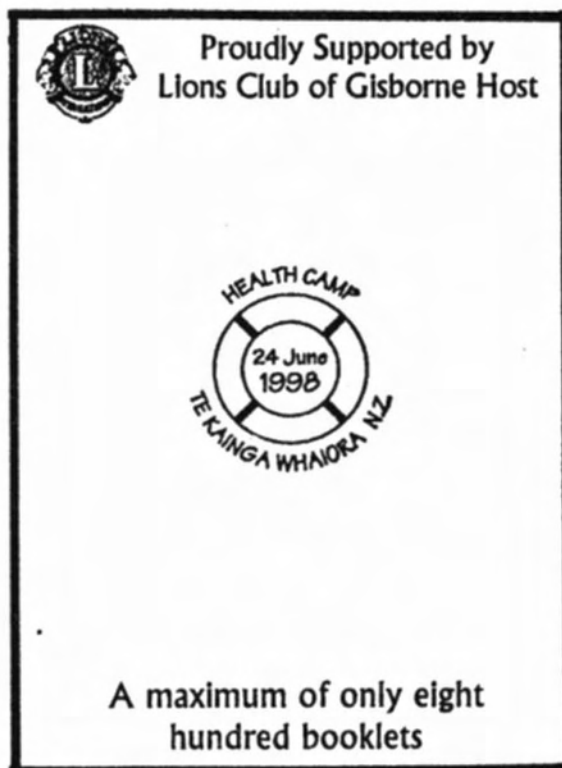


Figure 4

Four New Zealand Post Shops were involved in the sale of the first booklet. Remuera (Auckland), 5,000 covers printed in blue and shared with Postshops in Eastern and South Auckland; contained 40c and 80c stamps in separate booklets. St. Lukes (Auckland) cover printed in blue containing Quikstick 40c. stamps. Downtown Auckland 1,000 booklets with the same design printed on red card; the number printed on the back cover. Porirua no design on the red card cover but with an oval datestamp (without date) on the front cover. The numbers printed range from 5,000 in Remuera to 1,000 in Auckland Downtown.

It appears that the Post Shops have a contest for the sales of Health stamps and these booklets have been produced in response to this competition.

Although these were unofficial issues, they were produced by part of New Zealand Post and are, certainly a part of history. I expect that they will be popular with collectors and, given their popularity, they may well prove to be a precursor to official Health Stamp Booklets.

### TOO LATE FOR AIR-MAIL

BARRY SCOTT AND ALLAN P. BERRY

The Post Office Guide No. 160, June, 1939, shows that the postage payable on an inland article intended for dispatch on the New Zealand air services was 2d. for the first ounce or fraction thereof. According to *The History of New Zealand Postal Rates and Charges from 1840*, a chronological schedule of rates and charges by category prepared by Andrew McNiven around 1980, the rate was increased to 3d. each half ounce on 1st October, 1939. This is confirmed in The Post Office Guide No. 161, September, 1944. The Post Office Guide No. 160, June, 1939, indicates that late-fee letters must be prepaid 1d. in addition to the ordinary postage, which was raised to 2d. each letter in addition to postage, also on 1st October, 1939, according to Andrew McNiven. This is also confirmed in The Post Office Guide No. 161, September, 1944.

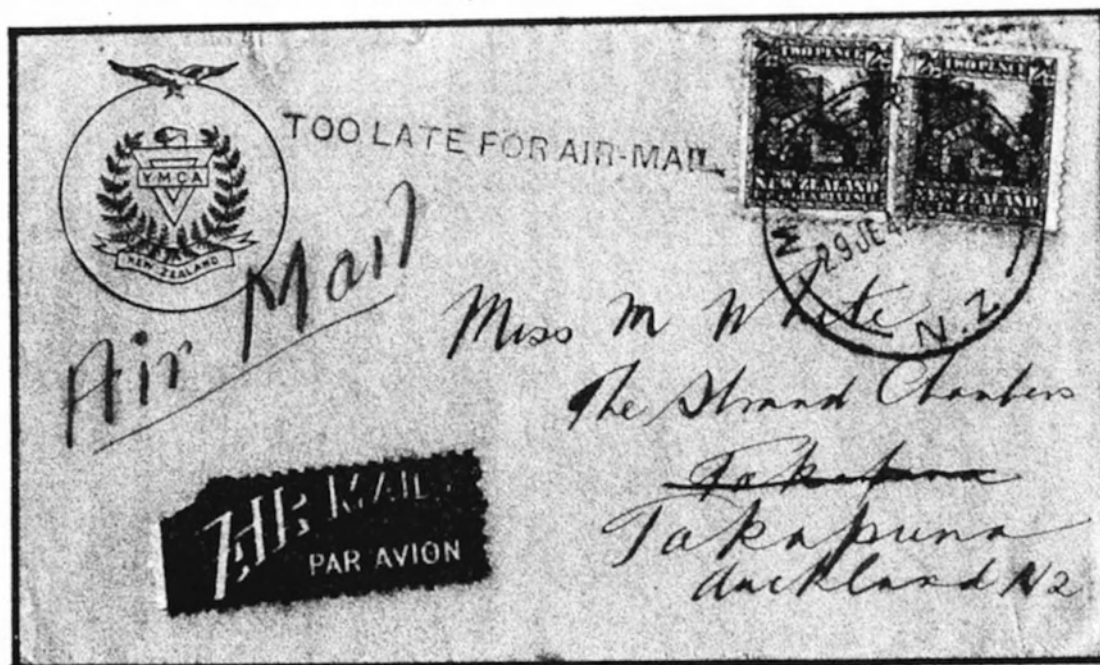


Figure 1

Figure 1 shows a cover addressed to Takapuna, Auckland, franked with two 2d. 1935 Pictorial Definitive stamps. The stamps have been cancelled MASTERTON - N.Z 29 JE 42 530AM and the cover carries an air mail etiquette. There are no backstamps, but the logo in the top left hand corner would suggest that the cover has been mailed by a serviceman. Volume 3 of *The Postage Stamps of New Zealand*, at page 374, states that a post office was operated at Masterton for the Royal New Zealand Air Force.

Of interest is the "TOO LATE FOR AIR-MAIL" marking applied in purple. So far as can be determined, this marking has not been previously recorded. As can be seen from the first paragraph, the rate of 4d. postage paid cannot be explained. It would be interesting to determine the route by which the cover actually travelled from Masterton to Takapuna and the route by which it would have travelled had it been in time for air mail dispatch. It would also be interesting to know where the TOO LATE FOR AIR-MAIL marking was applied - at the place of posting, Masterton, or at some other location en route, when it was realised that it was too late for air mail dispatch. If any reader can help with any comments on the cover, cachet and rate, we would be pleased to hear from them, through our Editor. Have any similar markings been recorded on covers intended for air mail dispatch within New Zealand - or overseas, for that matter.

# FOUND OPEN AND OFFICIALLY SEALED

GEOFF GOODENS

I recently came across a Registered cover which bears two "Officially Sealed" labels. The Obverse is shown in Figure 1 and the Reverse in Figure 2.

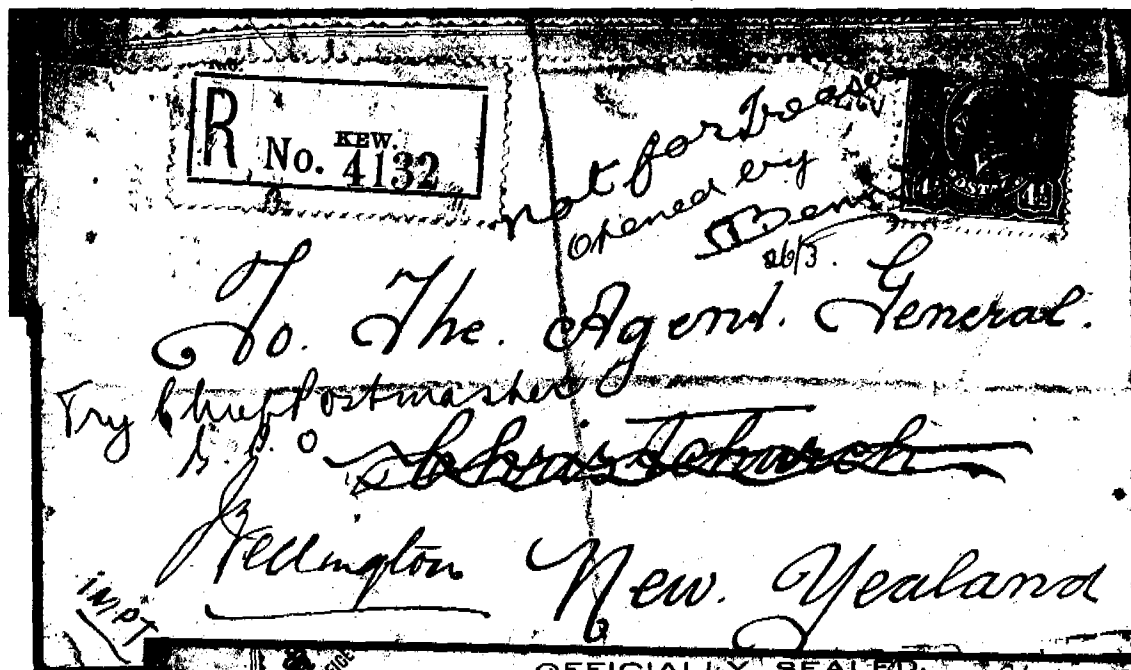


Figure 1

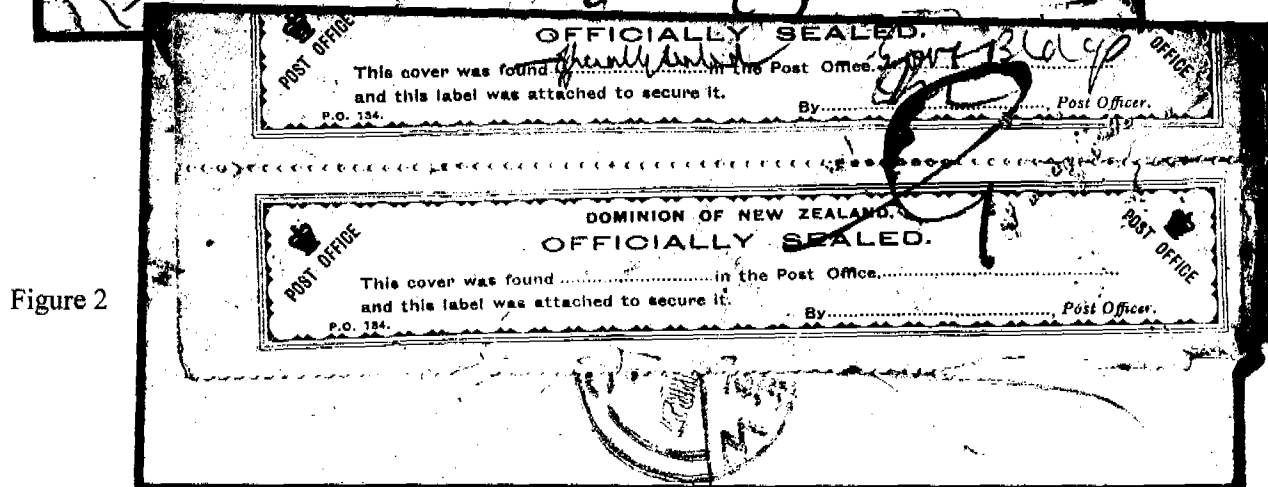


Figure 2

The letter was posted in Kew, Victoria and was re-directed from Christchurch to Wellington. It would appear that it could not be delivered and had to be opened to allow the return address to be determined. It was then re-sealed using the labels and, presumably, returned under separate cover.

Interestingly, the text "This cover was found ....." has been altered to "This cover was officially sealed". Within the envelope was the instruction leaflet shown in Figure 3. I do not think that I have seen this particular usage before and wonder whether the "Official Sealed" label was used because the cover was Registered.

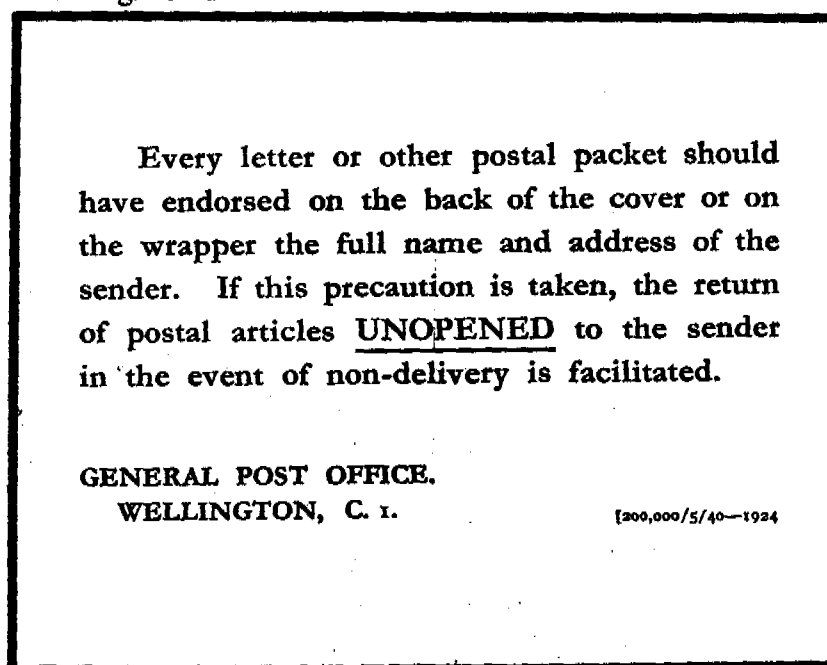


Figure 3

This label varies from that illustrated in Ron Ingrams article (1) as the number in the bottom left corner is "P.O. 134" whereas in the previously published example, it is "P.O.No. 134".

Reference:

1. Ingram R. "Found Open/Officially Sealed". *The Kiwi*. (1997). Vol. 46. No. 4. Pp. 70 - 73

#### AMERICAN V-MAIL

ERNIE LEPPARD

The American wartime V-Mails were the equivalent of the British and Commonwealth Airgraph service whereby a short letter was photographed on 35mm film, the film transported by air and processed on arrival to produce a photographic print of the letter approximately half the size of the original. This print would then be delivered through the normal mail contained within a distinctive cover. Many millions of these messages were sent by the Airgraph and V-Mail services during the war. Each system set up their own stations for photographing and processing.

The example illustrated as Figure 1 and Figure 2 strikes me as a little odd. Pilot Officer R. D. Bingley, RNZAF, sent it from Dunedin in New Zealand to an address in Rustington, Sussex in the United Kingdom. I wonder why the V-Mail service rather than the usual Commonwealth Airgraph service was used to sent this message.

One clue could be the "Passed by Naval Censor" marking in the top left corner. Apparently, American Battleships and some Cruisers had V-Mail forms and equipment enabling the production of microfilm. However, this form is dated Apr. 27 1944 as is the postmark applied by the American Postal Service No. 1. This particular Service was located in New York. Is it conceivable that an aircraft could transport the microfilm in one day from Dunedin to New York? It is conceivable that the pilot was serving on an American aircraft carrier located in the Pacific and used Dunedin as a return address.

Another strange feature is the routing of the item through New York. Delivery through the ordinary mail would add 23 days to the delivery time. By this time, the United States would have



had processing points in the U.K. for the G.I.s who were in the country preparing for D-Day which was about 5 weeks away. It may be that, having originated onboard an American ship, the microfilm, with about 32 messages from US sailors, would have contained a majority of New York or East Coast addresses and would not proceed further.

Figure 1

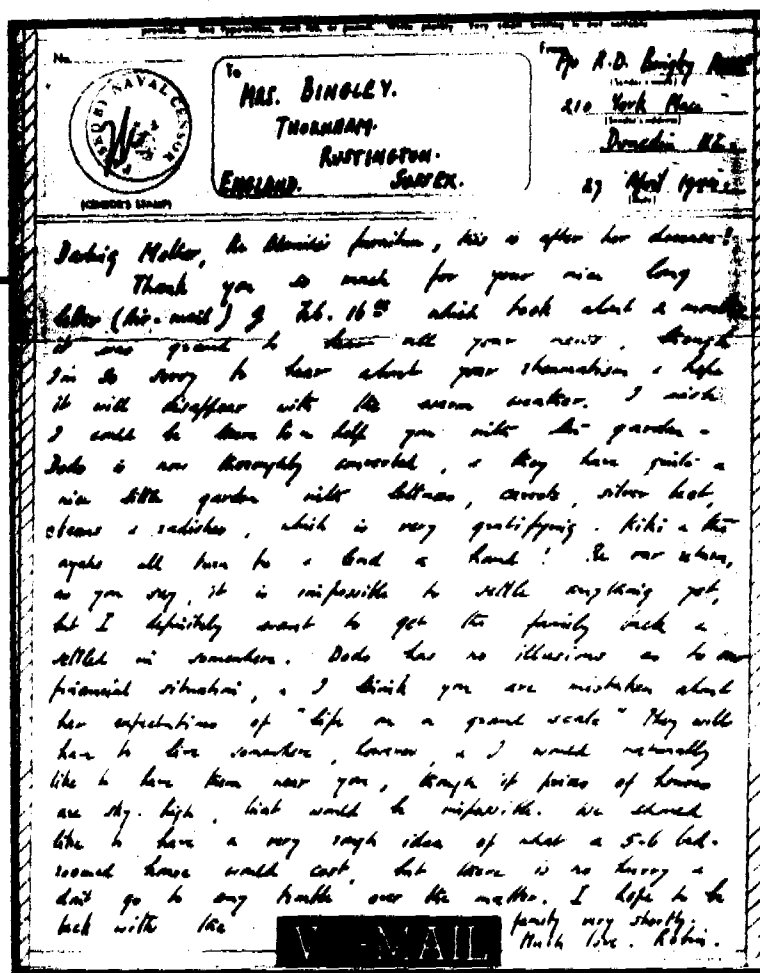
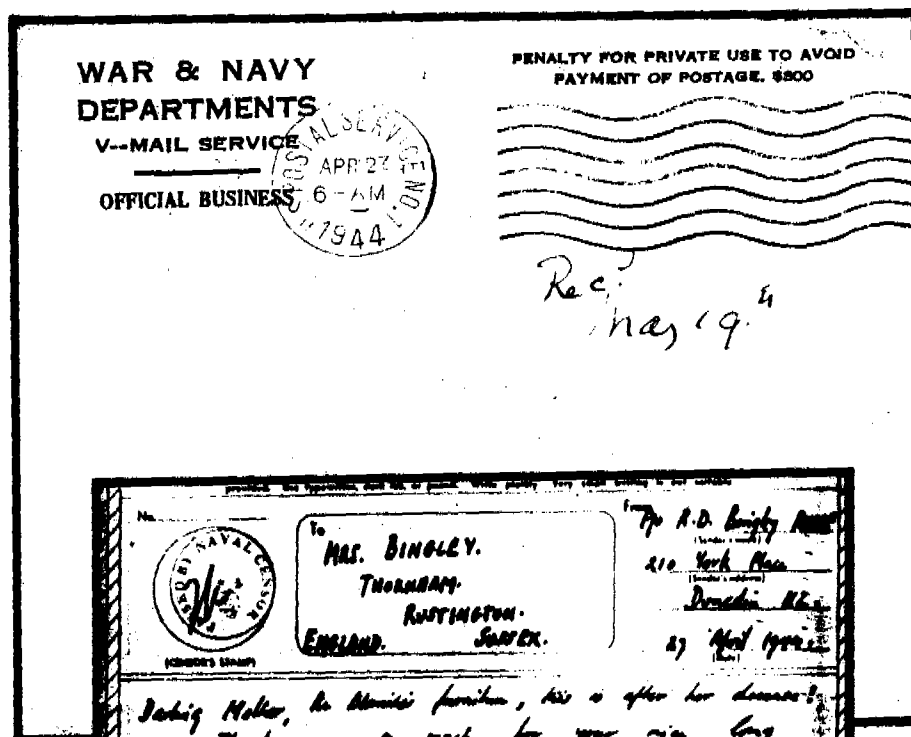


Figure 2

I would be interested to hear of any other explanation of these anomalies. I also wonder how an ordinary personal letter was transported in an Official Business envelope; was Pilot Officer Bingley held to be in a privileged position?